

Multi-Port Fast Ethernet Print Server



Equipped with the Parallel printing interfaces, the FPS-3300 makes your printer sharing available in most popular network environments.

With the embedded web server, the FPS-3300 is configurable through your network PC's Web Browser. Moreover, PLANET also provides a management utility for Microsoft Windows systems. With various network printing methods including Windows Peer-to-Peer printing, NetWare and Windows server based Queues printing, LPR printing, Internet Printing Protocol (IPP) and AppleTalk for Macintosh, the FPS-3300 can be applied to any network easily.

With Auto-MDI/MDI-X function, users don't need to concern about the cable type while connecting to different LAN devices. It is capable of detecting the signal and changes its transfer/receive order on the cable automatically. Moreover, the FPS-3300 LAN port can auto-sense and adjust the current network speed, thus eliminates the requirements for manually switching.

KEY FEATURE

Supports for most popular NOS

- Supports Windows 98/2000/Me/NT/XP/Server 2003, Linux, Unix, Novell and Mac OS

Auto-Sensing

- Supports 10/100Mbps Auto-Nway, Automatically Negotiates optimal mode, 10/20Mbps, 100/200Mbps
- Ethernet 802.2, Ethernet 802.3, SNAP Auto-Detect

Auto-MDI/MDI-X

- Auto detects the connected cable type while connecting to different LAN devices. It is capable of detecting the signal and changes its transfer/receive order on the cable automatically.

Compatible with popular network utility

- Unix, TCP/IP: LPD, TFTP
- Windows: LPR, PTP driver, IPP, SMB (NetBEUI)
- Apple: Ether Talk Chooser
- Novell: IPX/SPX, TCP/IP (5.x and later)

Easy Management

- Intuitive management utility provided for Windows 98/2000/Me/NT/XP and Server 2003
- Web-Base Management
- HP Web JetAdmin

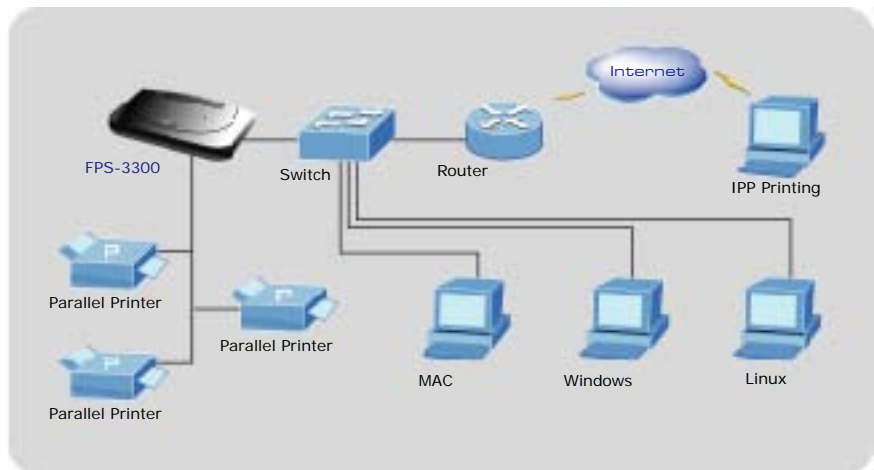
SPECIFICATION

Product	Multi-Port Fast Ethernet Print Server
Model	FPS-3300
Media Interface	1-Port RJ-45 UTP
Standards	IEEE 802.3, 10Base-T, IEEE 802.3u, 100Base-TX
Cabling	Category 5/5e or above, 2-pair
Printer Ports	3 x Parallel port
Protocols	TCP/IP, IPX/SPX, AppleTalk, NetBEUI, Bi-Directional
NOS Support	Windows 95/98/Me/2000/NT/XP/Server 2003, Novell, Linux, Unix, and MAC OS
Printing Methods	PTP (Peer-to-Peer), Windows LPR printing, SMB, IPP (Internet Printing Protocol), LaserWriter Chooser (AppleTalk)
Management Tools	PS-Admin (Windows Application), Web-based management (HTTP), HP Web JetAdmin
Dimension	214 x 131 x 42.7 mm
Weight	305g
Power Supply	5V DC, 2A
Emission	FCC/CE

APPLICATIONS

All users that work with different OS, such as Windows, Linux, Mac OS and Novell that can print to the printer via FPS-3300 at the same time.

Secondly, while the FPS-3300 is assigned with a legal IP address, local as well as Internet users can print to the attached printer through Internet with IPP printing function.


ORDERING INFORMATION

FPS-3300	Multi-Port Fast Ethernet Print Server
----------	---------------------------------------