

2 Mega-Pixel H.264 Box IP Camera

ICA-HM125

Quick Installation Guide

Version 1.0

Table of Contents

Chapter 1. Introduction	3
1.1 Before Installation.....	3
1.2 System Requirements	3
Chapter 2. Physical Description and Installation.....	4
2.1 ICA-HM125 Package Content	4
2.2 ICA-HM125 Physical Details	4
2.3 ICA-HM125 Installation.....	7
Chapter 3. Camera Windows Utility	8
3.1 Network Configuration	8
3.2 Open the Web-based UI	10
3.3 Setup ActiveX to use the IP Camera.....	11
Further Information	12

Chapter 1. Introduction

Thank you for purchasing the PLANET 2-MegaPixel IP Camera, ICA-HM125, is the state of the art design using the highest resolution for high quality image capture. Compared with VGA cameras with 640x480 pixel resolution, the ICA-HM125 deliver clear image with dual H.264/M-JPEG stream video up to UXGA (1600 x 1200 pixels). The ICA-HM125 offers high flexibility to be applied in various kinds of IP surveillance environment as it has built-in ICR (IR-cut filter Removable) for day / night surveillance and is compatible with IEEE 802.3af PoE (Power over Ethernet) for easy installation without concerning the outlet / socket locations. Network and analog video output interfaces are equipped for flexible viewing and recording implementations. The ICA-HM125 is also designed with the removable CS mount lens that can be customized with auto-iris, wide angle, vari-focal or other types of lens as required.

The PLANET IP Camera support multiple video profile can stands for simultaneously video streams. The IP Cameras can generate H.264 and M-JPEG streaming simultaneously to different clients. Moreover, the resolution can be different from one client to another. This state-of-art design is considerable to fit in various network environments.

1.1 Before Installation

Before installation, please be sure to read this quick installation guide and user's manual (CD) carefully to complete machine installation. This guide shows how to quick set up the IP Cameras, unless model name specified terms "IP Camera" will be used for this model.

1.2 System Requirements

The IP Camera can be monitoring on all of Windows operating system that with suggest system requirment below in order to get better video performance when resolution up to 2 megapixel.

CPU	Intel® Core2 Duo E5300 2.6GHz
RAM	1 GB
Video RAM	128MB
Display Chip	nVIDIA GeForce 8500GT or ATI Radeon HD 4350 or above
Display Resolution	1024 x 768 24bits
Operating System	Windows2000 SP4 / Windows XP Pro SP2 / Windows 2003 / Vista
DirectX	9.0c or above
Network	Wired Ethernet 100Base-TX

Chapter 2. Physical Description and Installation

2.1 ICA-HM125 Package Content

IP Camera Unit x 1

Power Adapter x 1

Camera Mount Kit x 1

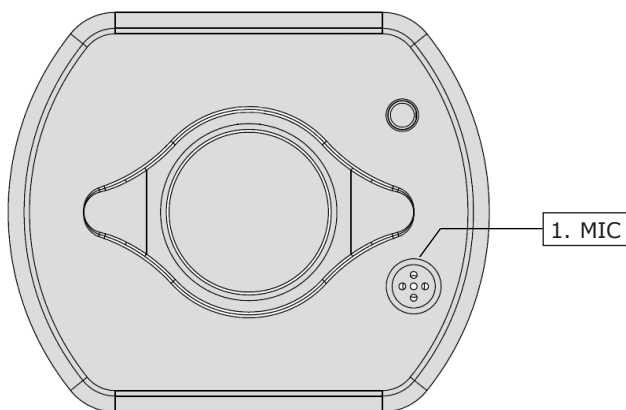
User's Manual CD-ROM x 1

Quick Installation Guide x 1

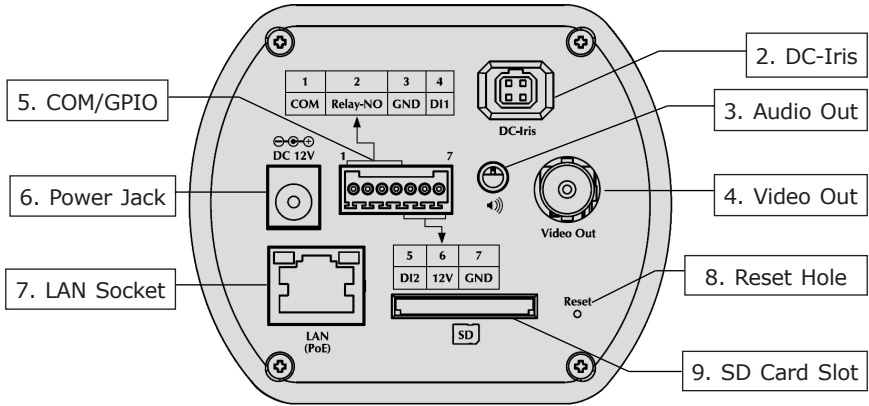


If any of the above items are missing, please contact your dealer immediately.

2.2 ICA-HM125 Physical Details



Font view



Rear View

1. MIC in:

The IP Camera has built-in an internal microphone. This microphone is hidden in the pinhole located on the front panel.

2. DC-Iris:

The connector provides DC power can drive most DC-Iris lens for betterment of the image quality.

3. Audio Output:

It allows this IP Camera to output audio. Connect with a 3.5Ø phone jack speaker (external adaptor).

4. Video Out (BNC Connector):

The IP Camera also provides composite video output. User can use BNC video cable to connect the IP Camera with a TV monitor or VCR.

5. COM/GPIO:

The 7 pin terminal block includes 2 input ports and 1 output ports.

Terminal block for I/O connectors:

Name	Pin	Function
COM	1	Signal output
Relay-ON	2	Signal output relay
GND	3	Ground
DI1	4	Signal Input 1
DI2	5	Signal Input 2
12V	6	DC 12V
GND	7	Ground

6. Power Jack:

The input power is DC 12V.



Note

1. Only use the power adapter supplied with IP Camera otherwise, the product may be damaged.
2. The power adapter is unnecessary when IP Camera is connected to a IEEE 802.3af PoE switch. Otherwise, the product may be damaged when IP Camera is connected to a PoE switch and power adapter simultaneously.

7. LAN Socket:

The LAN socket is a RJ-45 connector for connections to 10/100Base-TX Fast Ethernet cabling can detect or negotiate the transmission speed of the network automatically. Please use CAT-5 or above cable to connect the IP Camera to a 100Mbps Fast Ethernet network switch or hub.

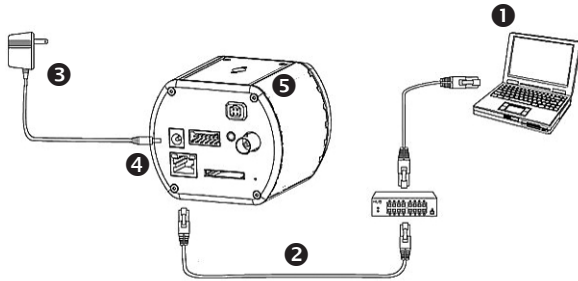
8. Reset Hole:

This button is hidden in the pinhole. Please refer to the user's manual for more information.

9. SD Card Slot:

The IP Camera has built-in an SD card slot accepts SD / SDHC memory card for image / video event recording.

2.3 ICA-HM125 Installation



Step 1. Prepare a PC with Ethernet link to the network

Step 2. Connect an Ethernet cable

Connect LAN port (RJ-45) of the IP Camera to a network switch. When this switch is a PoE device, you can ignore the next step.



If there has an IEEE 802.3af PoE switch in your network, you can connect the IP Camera LAN cable to this PoE switch to obtain power. The power adapter is unnecessary when IP Camera is connected to a PoE switch.

Step 3. Attach the power supply

Plug in power adapter to IP Camera and connect another end to power outlet.



Only use the power adapter supplied with IP Camera otherwise, the product may be damaged.

Step 4. Check LED status

The Power LED is defined to identify IP Camera status. When IP Camera booting the LED will be flashing and while IP Camera is ready the LED will be green.

Step 5. Attach BNC connector and speaker to IP Camera (option)

Connect the video BNC connector to a monitor set if necessary check IP Camera viewing angle and focus. And if user needs not only video stream but also audio stream, then the speaker should be attached to IP Camera.

Chapter 3. Camera Windows Utility

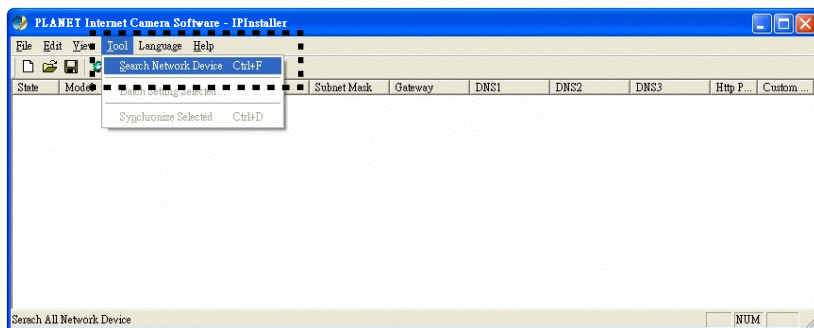
This chapter shows how to quick set up your IP Camera. The IP Camera is with the default settings. However to help you find the networked IP Camera quickly the Windows utility (PLANET IPInstaller) can search the IP Cameras in the network that shall help you to configure some basic setting before you start advanced management and monitoring.

Please insert the bundle CD disk into your CD/DVD-ROM drive. When the welcome web page appears, please click your IP Camera name on the IP Camera list i.e. ICA-HM125. Then click on the utility IPInstaller to start the program.

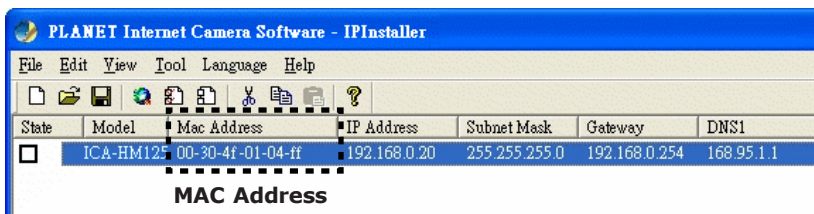
3.1 Network Configuration

Please click **"Search Network Device"** button. PLANET IPInstaller will list all networked IP Camera in the LAN. If the IP Camera doesn't be found, you may check whether this IP Camera is connect to network properly and press the search button again.

1. Click the menu bar **Tool > Search Network Device** to search the device in the LAN.



2. Select IP Camera with the MAC Address corresponds to the IP Camera that is to be configured.



3. Double click the item to open the Property Page or click the menu bar **View > Property**.

The screenshot shows a 'Property Page' dialog box with the following sections:

- Video Server**: Mac Addr (00-30-41-01-04-f), Firmware Version (1.0.2_rc10.4391)
- Property** (highlighted with a dashed border): IP Address (192.168.0.20), Subnet Mask (255.255.255.0), Gateway (192.168.0.254), Http Port (80), DNS1 (168.95.1.1), DNS2 (168.95.1.1), DNS3 (168.95.1.1)
- Username & Password**: Use Custom, Username (admin), Password (admin)

Buttons: Set, Cancel

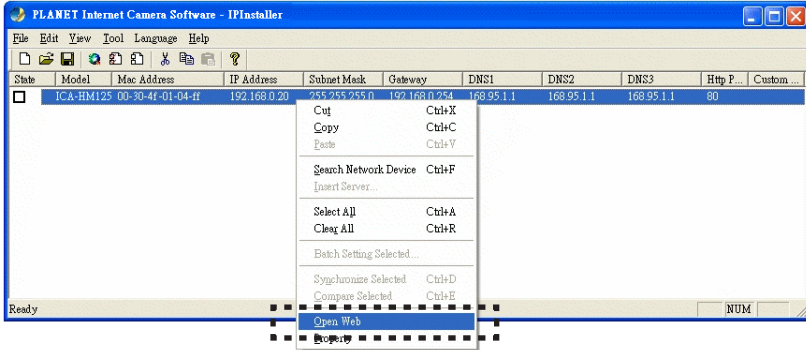
4. After filling the desired settings in the properties, click on **“Set”** button to complete the configuration settings.

This screenshot is identical to the previous one, but the 'Set' button is highlighted with a dashed black border, indicating it has been clicked to apply the settings.

3.2 Open the Web-based UI

If IPInstaller finds IP Camera, please select the device you want to view and click the **"Open Web"** button. Then you could see the video from IP Camera directly.

1. To access the Web-based UI of the selected unit, run the **View > Open Web** on the menu bar.



2. After connected to IP Camera, it will prompt for User Name and Password, please enter both of **admin** to continue Web Management. Confirm the installation as it is required to view the video stream and some operations.



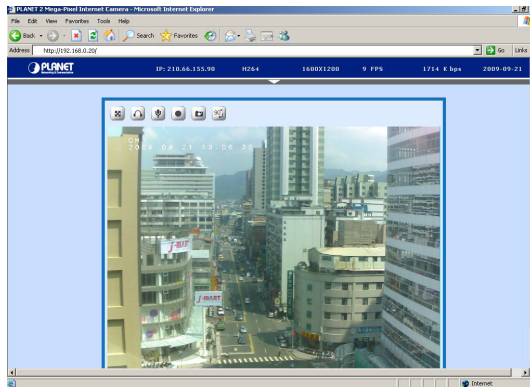
If difficulty is met, please refer to the following steps to establish the connection:

- The IP Camera must be installed and powered ON.
- If the IP camera's default IP Address (**192.168.0.20**) is already used by another device, the other device must be turned OFF until the device is allocated a new IP Address during configuration.

3. For the first installation, there will be a prompt to install the ActiveX control.



4. If the device has been configured correctly, the default Web browser will open to the home page of the selected device.



3.3 Setup ActiveX to use the IP Camera

If not able to get the ActiveX download properly, user must temporarily lower your security settings to perform a one-time-only installation of the ActiveX component onto your workstation, as described below:

1. From the **Tools** menu, select **Internet Options > Security > Custom Level**.
2. Set the security level to **"Low"** and click **"OK"**.
3. Restore the security level after the ActiveX installation.

Further Information

This guide is used to help you startup your IP Camera settings. It is also recommended to check the user manual in CD disk for more details of the system and user configuration.