

1. Package Content

Thank you for purchasing PLANET 24-Port 10/100Mbps + 2 Gigabit TP/SFP Combo Web Smart Switch, FGSW-2620CS. Terms of **"Switch"** in following section of this quick installation guide means the FGSW-2620CS.

Upon open the box of the Switch and carefully unpack it. The box should contain the following items:

- The Switch x 1
- This Quick Installation Guide x 1
- User's Manual CD x 1
- Power Cord x 1
- Rubber Feet x 4
- Two Rack-mounting Brackets with Attachment Screws x 1

If any item is found missing or damaged, please contact your local reseller for replacement.

2. Requirements

The FGSW-2620CS provides remote Web interface for manage; the following equipments are necessary for further management.

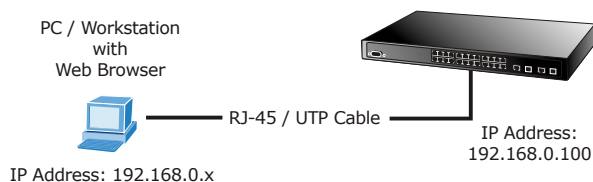
- **Workstation** installed with Ethernet NIC (Network Interface Card)
- Workstations of subscribers running Windows 98/ME, NT4.0, 2000/XP, MAC OS9 or later, Linux, UNIX or other platform compatible with TCP/IP protocols.
 - ◆ Above Workstation installed with Web Browser and JAVA runtime environment Plug-in.
- **Ethernet Port** connect
 - ◆ Network cables - use standard network (UTP) cables with RJ-45 connectors.



It is recommended to use Internet Explorer 7.0 or above to access FGSW-2620CS Web Smart Switch.

3. Start Web Management

The PLANET FGSW-2620CS provide a built-in browser interface. You can manage the Switch remotely by having a remote host with Web browser, such as Microsoft Internet Explorer, Apple Safari or Mozilla Firefox.



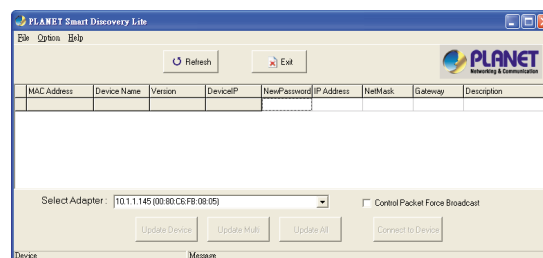
The following shows how to startup the **Web Management** of the **Switch**, please note the Switch is configured through an Ethernet connection, make sure the manager PC must be set on the same **IP subnet address**, for example, the default IP address of the Switch is **192.168.0.100** (the factory-default IP address), then the manager PC should be set at 192.168.0.x (where x is a number between 1 and 254, except 100), and the default subnet mask is 255.255.255.0.

4. PLANET Smart Discovery Lite Utility

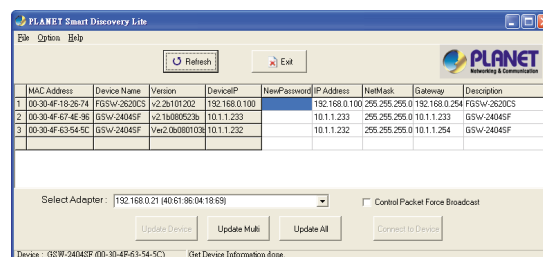
For easily list the FGSW-2620CS in your Ethernet environment, the Planet Smart Discovery Utility from user's manual CD-ROM is an ideal solution.

The following install instructions guiding you for run the Planet Smart Discovery Utility.

1. Deposit the Planet Smart Discovery Utility in administrator PC.
2. Run this utility and the following screen appears.



3. Press **"Refresh"** button for list current connected devices in the discovery list, the screen is shown as follow.



This utility show all necessary information from the devices, such as MAC Address, Device Name, firmware version, Device IP Subnet address, also can assign new password, IP Subnet address and description for the devices.

4. Press **"Connect to Device"** button then the Web login screen appears.
5. Press **"Exit"** button to shutdown the Planet Smart Discovery Utility.

5. Login the Managed Switch

Use Internet Explorer 7.0 or above Web browser, enter IP address **<http://192.168.0.100>** (the factory-default IP address) to access the Web interface.

When the following dialog box appears, please enter the default user name **"admin"** and password **"admin"**. The login screen in Figure 5-1 appears.

Default IP Address: **192.168.0.100**
Default User name: **admin**
Default Password: **admin**



Figure 5-1. Web Login Screen of FGSW-2620CS

Web Smart | 24-Port 10/100Mbps + FGSW-2620CS | 2 Gigabit TP/SFP Combo Ethernet Switch

www.planet.com.tw

Quick Installation Guide



PLANET Technology Corp.
2010-A81160-000



After entering the user name and password, the Web main screen appears as Figure 5-2.

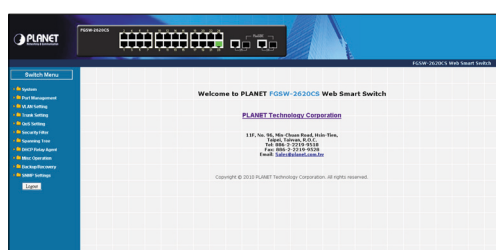
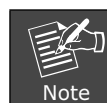


Figure 5-2. Web Main Screen of FGSW-2620CS

Now, you can use the Web management interface to continue the Switch management, please refer to the user manual for more.

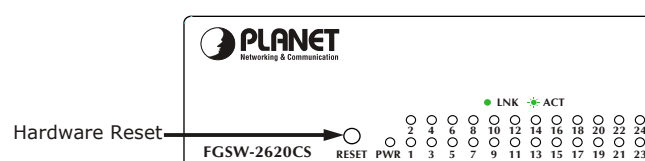


Note For security reason, please change and memorize the new password after this first setup.

6. While IP Address be changed or forgotten admin password –

To reset the IP address to the default IP Address "192.168.0.100" and the use name / password to factory default mode (default user name and password is **admin**). Press the hardware reset button at the front panel about 5 seconds. After the device is rebooted, you can login the

management Web interface within the same subnet of 192.168.0.xx and default user name / password.



7. Customer Support

Thank you for purchase PLANET products. You can browse our online FAQ resource at the PLANET Web site first to check if it could solve you issue. If you need more support information, please contact PLANET switch support team.

PLANET online FAQ :
<http://www.planet.com.tw/en/support/faq.php?type=1>

Switch support team mail address :
support_switch@planet.com.tw

Copyright © PLANET Technology Corp. 2011.

Contents subject to revision without prior notice.

PLANET is a registered trademark of PLANET Technology Corp. All other trademarks belong to their respective owners.