

## 1. Package Contents

Thank you for purchasing PLANET 24-Port 10/100Mbps + 2 Gigabit TP/SFP Combo Web Smart Switch, FGSW-2620CS. **"Switch"** mentioned in this quick installation guide means the FGSW-2620CS.

The box should contain the following items:

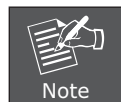
- Switch x 1
- Quick Installation Guide x 1
- User's Manual CD x 1
- Power Cord x 1
- Rubber Feet x 4
- Two Rack-mount Brackets with Attachment Screws x 1

If any item is found missing or damaged, please contact your local reseller for replacement.

## 2. Requirements

The FGSW-2620CS provides remote Web interface for management purposes; the following equipment is necessary for further management:

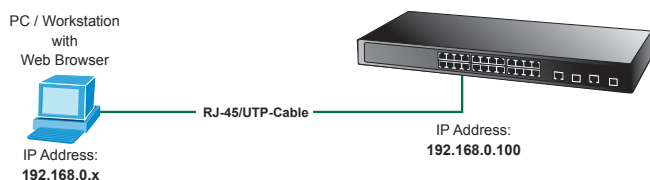
- **Workstation** is installed with Ethernet NIC (Network Interface Card)
- Workstations are subscribed to Windows 98/ME, NT4.0, 2000/XP, MAC OS9 or later, Linux, UNIX or other platforms compatible with TCP/IP protocols.
  - ◆ The above workstation is installed with Web Browser and JAVA runtime environment Plug-in.
- **Ethernet Port** connection
  - ◆ Network cables - use standard network (UTP) cables with RJ-45 connectors.



It is recommended to use Internet Explorer 7.0 or above to access the FGSW-2620CS Web Smart Switch.

## 3. Starting Web Management

PLANET FGSW-2620CS provides a built-in browser interface. You can manage the Switch remotely by having a remote host with Web browser, such as Microsoft Internet Explorer, Apple Safari or Mozilla Firefox.



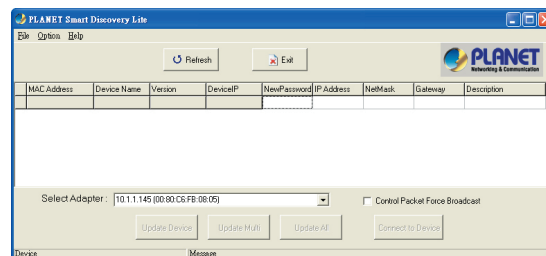
The following steps show how to startup the **Web Management** of the **Switch**. Please note the Switch is configured through an Ethernet connection. Make sure the manager PC must be set on the same **IP subnet address**, for example, the default IP address of the Switch is **192.168.0.100** (the factory-default IP address), then the manager PC should be set at 192.168.0.x (where x is a number between 1 and 254, except 100), and the default subnet mask is 255.255.255.0.

## 4. PLANET Smart Discovery Lite Utility

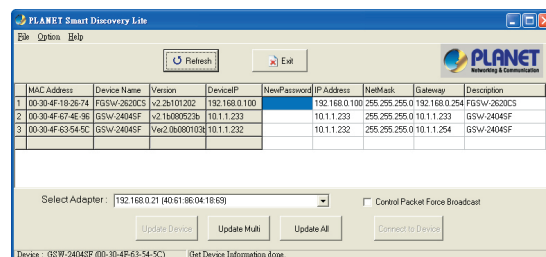
To easily list the FGSW-2620CS in your Ethernet environment, Planet Smart Discovery Utility from user's manual CD-ROM is an ideal solution.

The following install instructions guide you to running Planet Smart Discovery Utility.

1. Insert Planet Smart Discovery Utility in administrator PC.
2. Run this utility and the following screen appears.



3. Press **"Refresh"** button for the currently connected devices in the discovery list and the screen is shown as follows:



This utility shows all necessary information from the devices, such as MAC Address, Device Name, firmware version and Device IP Subnet address. It also can assign new password, IP Subnet address and description for the devices.

4. Press **"Connect to Device"** button and then the Web login screen appears.
5. Press **"Exit"** button to shut down Planet Smart Discovery Utility.

## 5. Login the Managed Switch

1. Use Internet Explorer 7.0 or above Web browser, and enter IP address **<http://192.168.0.100>** (the factory-default IP address) to access the Web interface.
2. When the following dialog box appears, please enter the default user name **"admin"** and password **"admin"**. The login screen in Figure 5-1 appears.

Default IP Address: **192.168.0.100**  
Default User name: **admin**  
Default Password: **admin**



Figure 5-1. Web Login Screen of FGSW-2620CS

[www.PLANET.com.tw](http://www.PLANET.com.tw)

## Web Smart Switch

FGSW-2620CS

24-Port 10/100Mbps +  
2 Gigabit TP/SFP Combo Web Smart Switch



PLANET Technology Corp.  
2010-A81160-001



- After entering the user name and password, the Web main screen appears as in Figure 5-2.



Figure 5-2. Web Main Screen of FGSW-2620CS

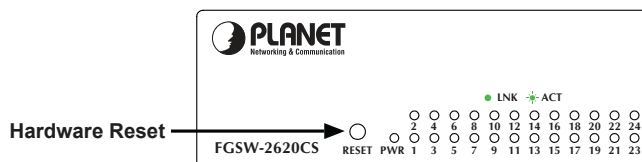
Now, you can use the Web management interface to continue the Switch management. Please refer to the user manual for more.



Note

For security reason, please change and memorize the new password after this first setup.

- 192.168.0.xx and default user name and password.



## 7. Customer Support

Thank you for purchasing PLANET products. You can browse our online FAQ resource at the PLANET Web site first to check if it could solve your issue. If you need more support information, please contact PLANET switch support team.

PLANET online FAQ:  
<http://www.planet.com.tw/en/support/faq.php?type=1>

Switch support team mail address:  
[support\\_switch@planet.com.tw](mailto:support_switch@planet.com.tw)

## 6. Changing IP Address or forgotten admin password

To reset the IP address to the default IP Address "192.168.0.100" and the user name and password to factory default mode (default user name and password are **admin**), press the hardware reset button on the front panel about 5 seconds. After the device is rebooted, you can login the management Web interface within the same subnet of

Copyright © PLANET Technology Corp. 2013.

Contents are subject to revision without prior notice.

PLANET is a registered trademark of PLANET Technology Corp. All other trademarks belong to their respective owners.