

300Mbps 802.11n Wireless WNRT-627 Broadband Router

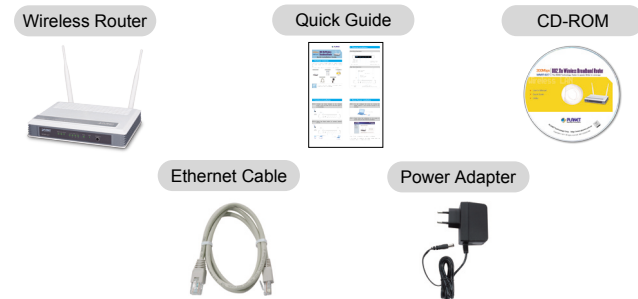
Quick Installation Guide



1. Package Contents

Thank you for choosing PLANET WNRT-627. Before installing the router, please verify the contents inside the package box.

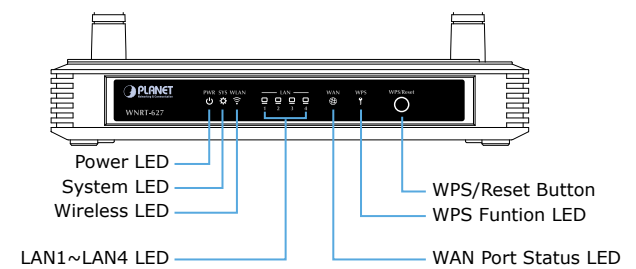
The items below should be contained in the package.



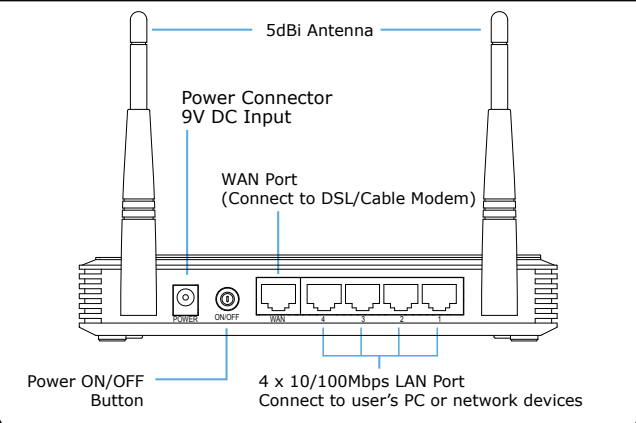
Note If there is any item missed or damaged, please contact the seller immediately.

2. Physical Installation

Front Panel Description

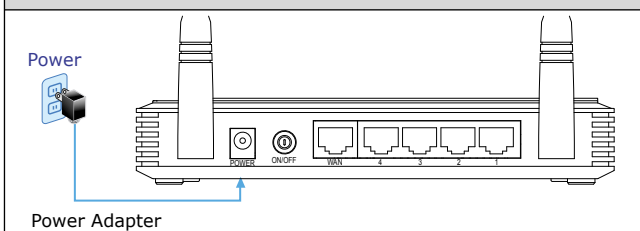


Rear Panel Description

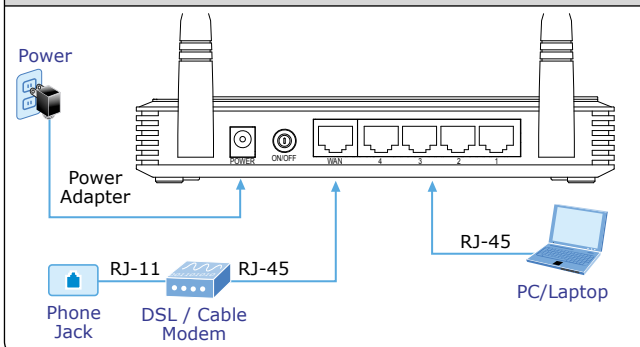


3. Hardware Installation

STEP 1: Connect the Power Adapter to the Wireless Router. Check the PWR LED on the front panel is on accordingly.



STEP 2: Follow the figure below to connect network devices.



4. Smart Setup! Installation

STEP 1: You can configure the router by running the SMART SETUP! in the CD-ROM provided in the package.



STEP 2: Please follow the indications on the screen to quickly setup for the Internet connection.



When "Finish" is displayed, the setup is completed.

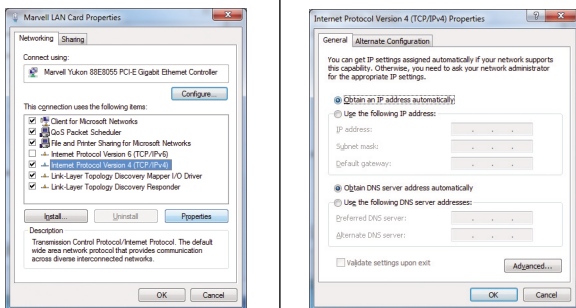
If you prefer the traditional web setup, please follow the procedures below to configure the router.

5. Manual Installation–Network Setup

A computer with wired Ethernet connection to the Wireless Router is required for the first-time configuration.

STEP 1: Set your computer to get an IP address from the Wireless Router: (Based on Windows 7)

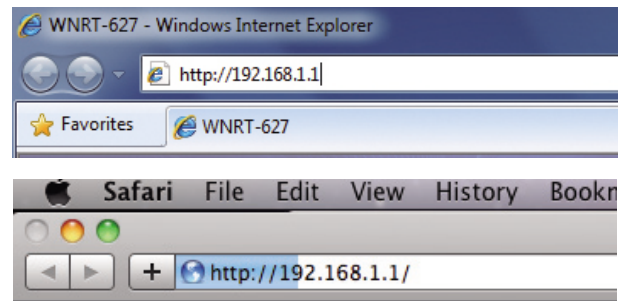
1. Click "Start" button located at lower-left corner of your computer
2. Click "Control Panel"
3. Double click "Network and Sharing Center" icon
4. Click "Change adapter settings"
5. Double click "Local Area Connection"
6. Select "Internet Protocol Version 4(TCP/IPv4)" and click "Properties"
7. Select "Obtain an IP address automatically" and "Obtain DNS server address automatically", then click "OK"



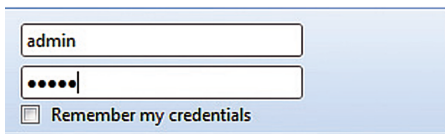
- 5 -

6. Manual Installation–Web Management

STEP 1: The Web management allows you to access and manage the Wireless Router easily. Launch the Web browser and enter the default IP address <http://192.168.1.1>



The default User name and Password are both **"admin"**. Then click OK button to continue.



Default IP Address: **192.168.1.1**

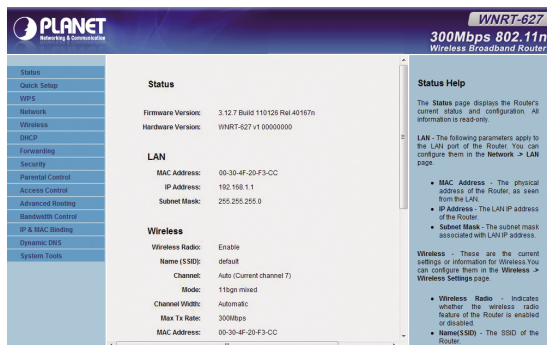
Default Username: **admin**

Default Password: **admin**

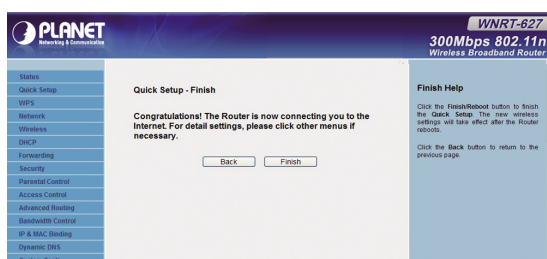
Default SSID: **default**

- 6 -

STEP 2: When you enter into the Web User Interface, click Quick Setup at the left hand side of the screen.



STEP 3: Once the basic configuration of the router is done. Click Reboot button to make the change take effect.



- 7 -

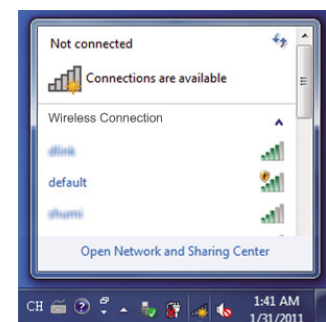
7. Wireless Network Connection

Step 1: Right-Click on the **network icon** displayed in the system tray



Step 2: Highlight the wireless network (SSID) to connect and click **[Connect]**

Step 3: Enter the **encryption key** of the Wireless Router



FURTHER INFORMATION:

The above steps introduce simple installations and configurations for WNRT-627. For further configurations of WAN, LAN, Wireless, Firewall, Virtual Server, Security, Routing, DMZ, and DDNS etc, please refer to the user's manual in the CD. If you have further questions, please contact the local dealer or distributor where you purchased this product.

2011-E50220-000

- 8 -