

Quick Installation Guide

WNAP-C3220

802.11n Ceiling Mount Wireless
Range Extender / Access Point



1. Package Contents

Thank you for choosing PLANET WNAP-C3220. Before installing the AP, please verify the contents inside the package box.

Wireless AP



Quick Guide



CD-ROM



Ethernet Cable



Power Adapter



Mounting Kit



x 4 x 4



If there is any item missing or damaged, please contact the seller immediately.

- 1 -

2. Physical Installation

Front Panel Description



Power LED

Rear Panel Description

Reset Button



1 x 10/100/1000Mbps PoE LAN Port

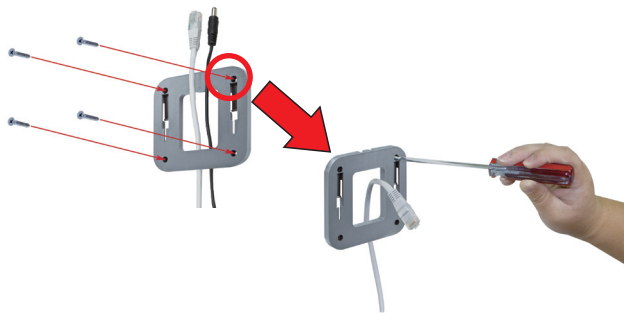


Power Connector 12V DC Input

- 2 -

3. Hardware Installation

Step 1: Attach the bracket to the wall or ceiling, and mark each point in the bracket for the screws. Remove the bracket to drill the points and insert the plastic wall-mounts. Use screws to lock the bracket by a screw driver.



Step 2: Plug the RJ-45 Ethernet cable into the WNAP-C3220.



- 3 -

Step 3: Plug the power adapter into the WNAP-C3220. If WNAP-C3220 is connected to a 802.3af PoE switch in STEP 2, you don't have to plug the power adapter.



Step 4: Attach the WNAP-C3220 to the mounting bracket.



Step 5: Successful installation.



Note

1. ONLY use the power adapter supplied with WNAP-C3220. Otherwise, the product may be damaged.
2. For the power supply of WNAP-C3220, you could use either IEEE 802.3af PSE device or 12VDC Adapter. Please do not use 12V adapter and PSE device at the same time. It may damage the WNAP-C3220 itself.

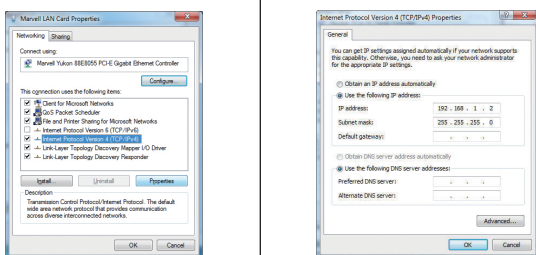
- 4 -

4. Web Login

A computer with wired Ethernet connection to the WNP-C3220 is required for the first-time configuration.

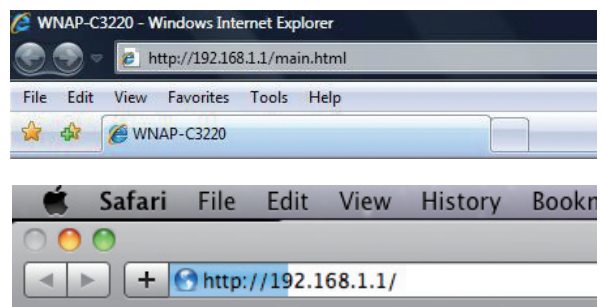
Step 1: Set your computer to a static IP address. (The following steps are based on Windows 7)

1. Click **"Start"** button located in the lower-left corner of your screen.
2. Click **"Control Panel"**
3. Double click **"Network and Sharing Center"** icon
4. Click **"Change adapter settings"**
5. Double click **"Local Area Connection"**
6. Select **"Internal Protocol Version 4 (TCP/IPv4)"** and click **"Properties"**
7. Select **"Use the following IP address"**
8. Assign a static IP address to your PC which should be in the same network segment with the WNP-C3220. As the default IP address of the WNP-C3220 is **192.168.1.1**, you may choose from 192.168.1.2 to 192.168.1.254. Then click OK.

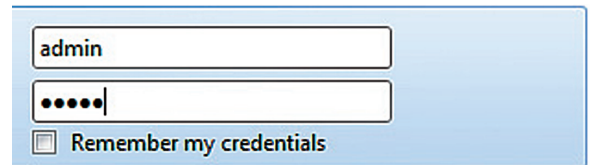


- 5 -

Step 2: The Web management allows you to access and manage the Wireless AP easily. Launch the Web browser and enter the default IP address <http://192.168.1.1>



The default User Name and Password are both **"admin"**. Then click OK button to continue.



Default IP Address: **192.168.1.1**

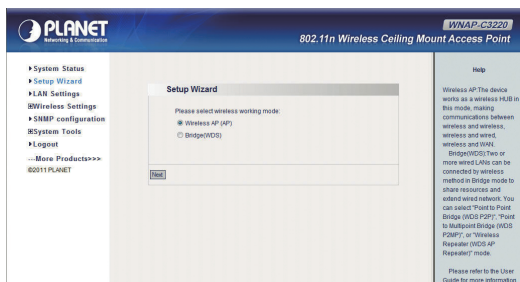
Default Username: **admin**

Default Password: **admin**

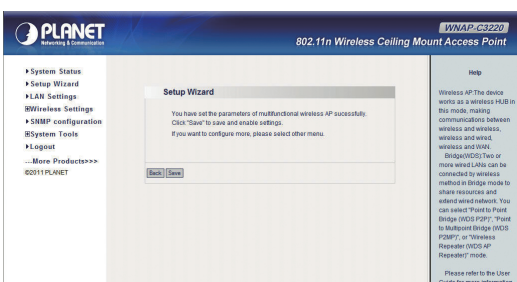
Default SSID: **default**

- 6 -

Step 3: When you enter the Web User Interface, click **Setup Wizard** on the left hand side of the screen.



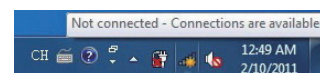
Step 4: Once the basic configuration of the AP is done, click **Save** button to make the change take effect.



- 7 -

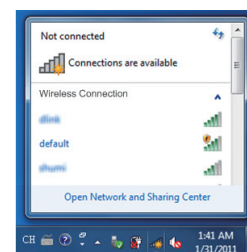
5. Wireless Network Connection

Step 1: Right-Click on the **network icon** displayed in the system tray.



Step 2: Highlight the wireless network (SSID) to connect and click **[Connect]**.

Step 3: Enter the **encryption key** of the Wireless Access Point.



FURTHER INFORMATION

The above steps introduce simple installations and configurations for the WNP-C3220. For further configurations of different operation modes, please refer to the user's manual on the CD. If you have further questions, please contact the local dealer or distributor where you purchased this product.

2011-E10400-001

- 8 -