

48-Port 10/100Mbps + 4 Gigabit TP / 2 SFP

Managed Switch

WGSW-5242

Quick Installation Guide

Table of Contents

- 1. Package Content 3
- 2. Requirements 4
- 3. Terminal Setup 5
- 4. Logon to the Console 6
- 5. Configure IP Address 7
- 6. Start Web Management..... 9
- Customer Support12

1. Package Content

Thank you for purchasing PLANET Layer 2 Managed Switch, WGSW-5242. Terms of “**Managed Switch**” in following section of this quick installation guide means the WGSW-5242.

Open the box of the **Managed Switch** and carefully unpack it. The box should contain the following items:

- The WGSW Managed Switch x 1
- User’s Manual CD x 1
- Quick Installation Guide x 1
- RS-232 Cable x 1
- Rubber Feet x 4
- Two Rack-mounting Brackets with Attachment Screws x 1
- Power Cord x 1

If any item is found missing or damaged, please contact your local reseller for replacement.

2. Requirements

- Workstations of subscribers running Windows 2000/XP/Vista/7, MAC OS9 or later, Linux, UNIX or other platform compatible with TCP/IP protocols.
- Workstation installed with Ethernet NIC (Network Card)
- **Serial Port connect** (Terminal)
 - ◆ Above PC with COM Port (DB-9)
- **Ethernet Port connect**
 - ◆ Network cables - Use standard network (UTP) cables with RJ45 connectors.
 - ◆ Above PC installed with WEB Browser and JAVA runtime environment Plug-in

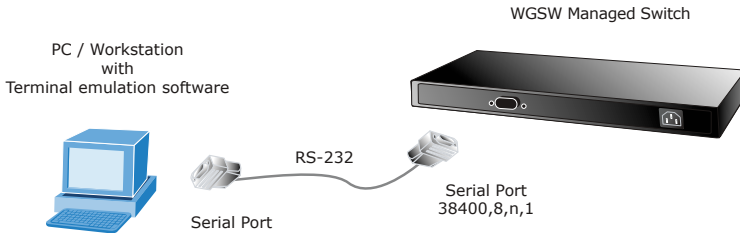


Note

It is recommended to use Internet Explore 7.0 or above to access WGSW Managed Switch.

3. Terminal Setup

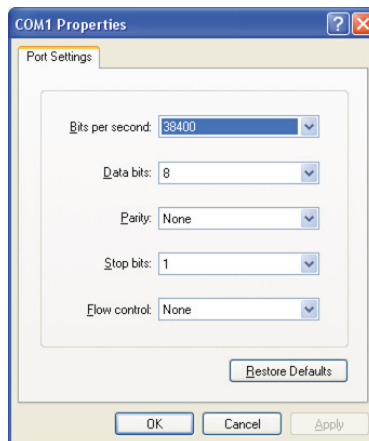
To configure the system, connect a serial cable to a **COM port** on a PC or notebook computer and to serial (console) port of the WGSW Managed Switch. The console port of the Managed Switch is DCE already, so that you can connect the console port directly through PC without the need of Null Modem.



A terminal program is required to make the software connection to the WGSW Managed Switch. Windows' **Hyper Terminal** program may be a good choice. The Hyper Terminal can be accessed from the **Start** menu.

1. Click **START**, then **Programs, Accessories** and then **Hyper Terminal**.
2. When the following screen appears, make sure that the COM port should be configured as:

- ◆ Baud : 38400
- ◆ Parity : None
- ◆ Data bits : 8
- ◆ Stop bits : 1
- ◆ Flow control : None



4. Logon to the Console

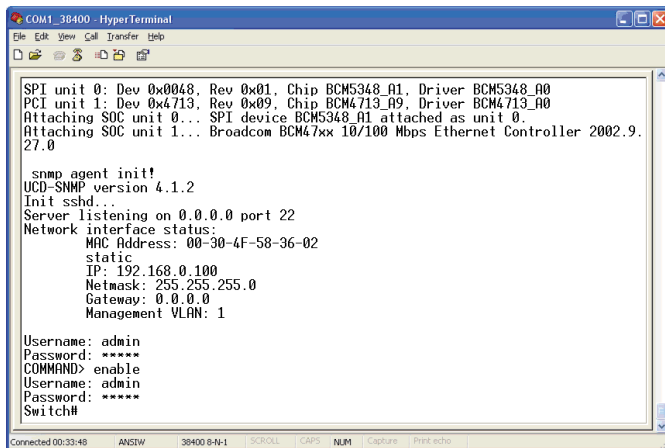
Once the terminal has connected to the device, power on the WGSW Managed Switch, the terminal will display that it is running testing procedures.

Then, the following message asks the login user name and password. The factory default user name and password as following and the login screen in Figure 4-1 appears.

```
Login: admin
Password: admin
```

To have access to the full suite of commands, the operator must enter the Privileged Mode. Enter **"enable"** to into the Privileged Mode and it requires password authentication. From Privileged Mode, the operator can issue any Exec command to enter the Global Configuration mode.

```
Command> enable
User name: admin
Password: admin
```



```
COM1_38400 - HyperTerminal
File Edit View Call Transfer Help
[Icons]
SPI unit 0: Dev 0x0048, Rev 0x01, Chip BCM5348_A1, Driver BCM5348_A0
PCI unit 1: Dev 0x4713, Rev 0x09, Chip BCM4713_A9, Driver BCM4713_A0
Attaching SOC unit 0... SPI device BCM5348_A1 attached as unit 0.
Attaching SOC unit 1... Broadcom BCM47xx 10/100 Mbps Ethernet Controller 2002.9.27.0

snmp agent init!
UCD-SNMP version 4.1.2
Init sshd...
Server listening on 0.0.0.0 port 22
Network interface status:
  MAC Address: 00-30-4F-58-36-02
  static
  IP: 192.168.0.100
  Netmask: 255.255.255.0
  Gateway: 0.0.0.0
  Management VLAN: 1

Username: admin
Password: *****
COMMAND> enable
Username: admin
Password: *****
Switch#

Connected 00:33:48  ANSWSW  38400 8-N-1  SOPOL  CAPS  NUM  | Capture  Print echo
```

Figure 4-1: WGSW Managed Switch Console Login Screen



1. For security reason, please change and memorize the new password after this first setup.
2. Only accept command in lowercase letter under console interface.

5. Configure IP Address

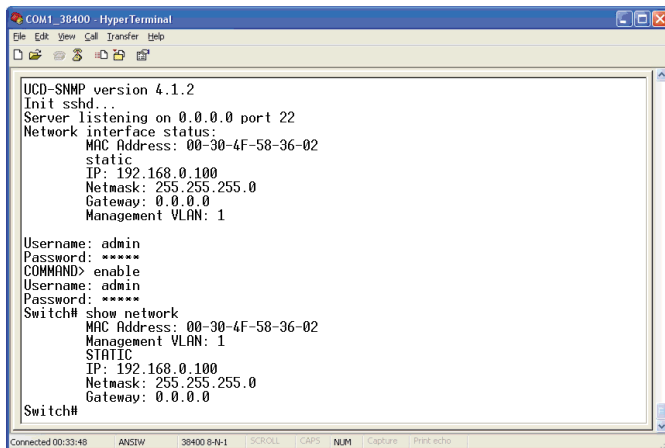
The WGSW Managed Switch is shipped with default IP address as following.

IP Address: **192.168.0.100**
Subnet Mask: **255.255.255.0**

To check the current IP address or modify a new IP address for the Managed Switch, please use the procedures as follow:

■ Show the current IP address

1. On "**Switch#**" prompt, enter "**show network**".
2. The screen displays the current IP address, Subnet Mask and Gateway. As show in Figure 5-1.



```
COM1_38400 - HyperTerminal
File Edit View Call Transfer Help
[Icons]
UCD-SNMP version 4.1.2
Init sshd...
Server listening on 0.0.0.0 port 22
Network interface status:
  MAC Address: 00-30-4F-58-36-02
  static
  IP: 192.168.0.100
  Netmask: 255.255.255.0
  Gateway: 0.0.0.0
  Management VLAN: 1

Username: admin
Password: *****
COMMAND> enable
Username: admin
Password: *****
Switch# show network
  MAC Address: 00-30-4F-58-36-02
  Management VLAN: 1
  STATIC
  IP: 192.168.0.100
  Netmask: 255.255.255.0
  Gateway: 0.0.0.0
Switch#
```

Figure 5-1: Show IP Information Screen

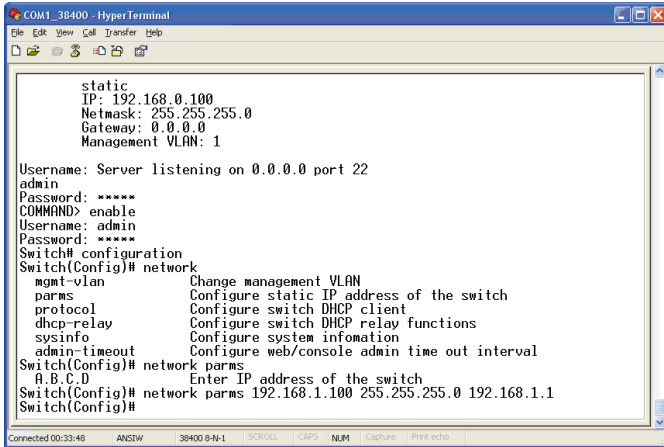
■ Configure IP address

3. On "**Switch#**" prompt, type "**configuration**" to enter into global configuration mode.
4. On "**Switch(Config)#**" prompt, enter the following command and press **<Enter>**. As show in Figure 5-2.

**Switch(Config)# network parms 192.168.1.100
255.255.255.0 192.168.1.1**

The previous command would apply the follow settings for the Managed Switch.

IP: 192.168.1.100
Subnet Mask: 255.255.255.0
Gateway: 192.168.1.1



```
static
IP: 192.168.0.100
Netmask: 255.255.255.0
Gateway: 0.0.0.0
Management VLAN: 1


Username: Server listening on 0.0.0.0 port 22
admin
Password: *****
COMMAND> enable
Username: admin
Password: *****
Switch# configuration
Switch(Config)# network
  mgmt-vlan          Change management VLAN
  parms              Configure static IP address of the switch
  protocol           Configure switch DHCP client
  dhcp-relay         Configure switch DHCP relay functions
  sysinfo            Configure system information
  admin-timeout      Configure web/console admin time out interval
Switch(Config)# network parms
A.B.C.D             Enter IP address of the switch
Switch(Config)# network parms 192.168.1.100 255.255.255.0 192.168.1.1
Switch(Config)#
```

Figure 5-2: Set IP Address Screen

5. Repeat Step 1 to check if the IP address is changed.

6. On **Switch#** prompt, type **Save** to save the current configuration.

If the IP is successfully configured, the Managed Switch will apply the new IP address setting immediately. You can access the Web interface of WGSW Managed Switch through the new IP address.



Note

If you do not familiar with console command or the related parameter, enter "?" anytime in console to get the help description.

6. Start Web Management

The following shows how to startup the **Web Management** of the WGSW Managed Switch. Note the Managed Switch is configured through an Ethernet connection, please make sure the manager PC must be set on the same **IP subnet address**.

For example, the default IP address of the WGSW Managed Switch is **192.168.0.100**, then the manager PC should be set at **192.168.0.x** (where x is a number between 1 and 254, except 100), and the default subnet mask is 255.255.255.0.

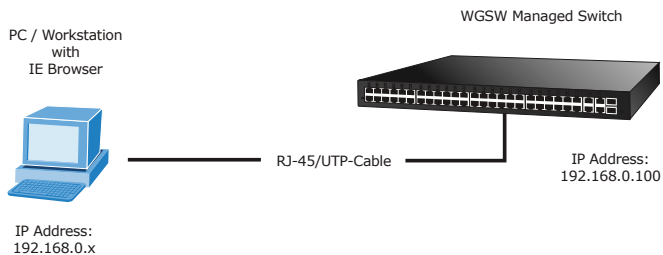


Figure 6-1: IP Management Diagram

Login the Managed Switch

1. Use Internet Explorer 7.0 or above Web browser, enter IP address **http://192.168.0.100** (the factory-default IP address or that you have just changed in console) to access the Web interface.
2. When the following dialog box appears, please enter the default username **“admin”** and password **“admin”** (or the password you have changed via console). The login screen in Figure 6-2 appears.

User name: **admin**
Password: **admin**

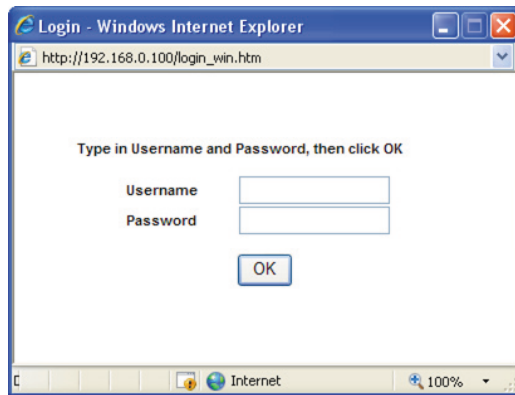


Figure 6-2: Web Login Screen

3. After entering the password, the main screen appears as Figure 6-3.

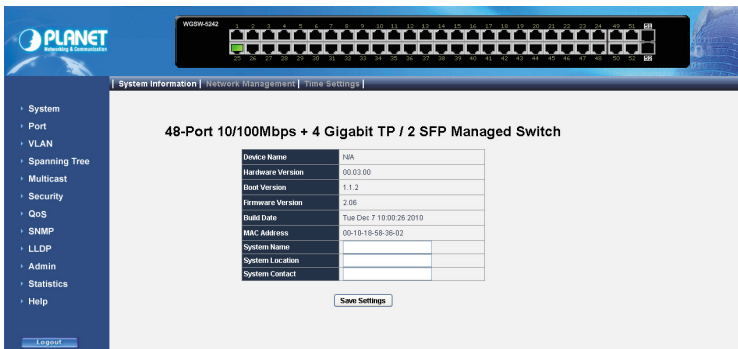


Figure 6-3: Web Main Screen of WGSW Managed Switch

4. The Switch Menu on the left of the Web page let you access all the commands and statistics that Switch provides.

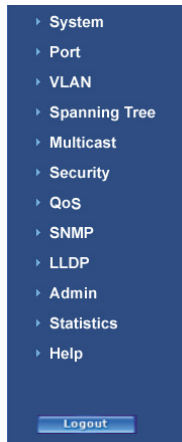



Figure 6-4: Switch Menu

 **Note**

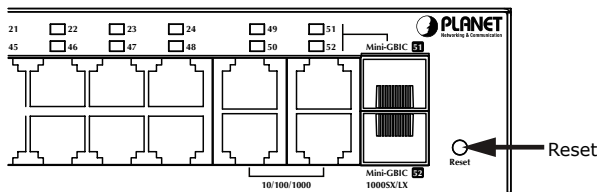
If you do not familiar with Switch functions or the related parameter, press **“Help” button** anytime in left menu of the Web page to get the help description.

Now, you can use the Web management interface to continue the Switch management or manage the Switch by console interface.

Please refer to the user manual for more.

■ While IP Address be changed or forgotten admin password –

To reset the IP address to the default IP address **“192.168.0.100”** or reset the login password to default value. Press the hardware reset button at the front panel about **10 seconds**. After the device is rebooted, you can login the management WEB interface within the same subnet of 192.168.0.xx.



Customer Support

Thank you for purchase PLANET products. You can browse our online FAQ resource at the PLANET website first to check if it could solve you issue. If you need more support information, please contact PLANET switch support team.

PLANET online FAQ :

<http://www.planet.com.tw/en/support/faq.php>

Switch support team mail address :

support_switch@planet.com.tw