

Quick Installation Guide

WPG-130N

802.11n Pocket Presentation Gateway



1. Package Contents

Thank you for choosing PLANET WPG-130N. Before installing the device, please verify the contents inside the package box.

WPG-130N



Power Adapter



Quick Guide



World-Wide Adapter Set



(US/EU/UK)

CD-ROM



VGA Adapter



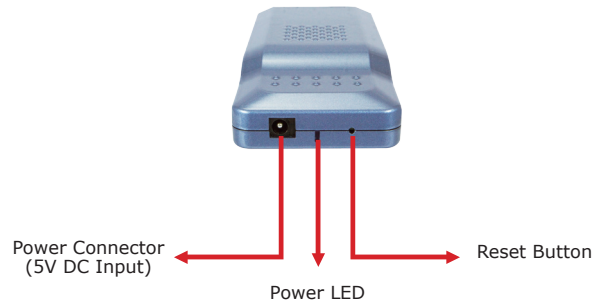
Note

If there is any item missed or damaged, please contact the seller immediately.

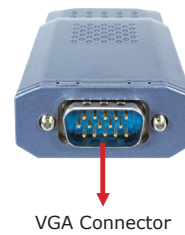
- 1 -

2. Physical Installation

Front Panel Description



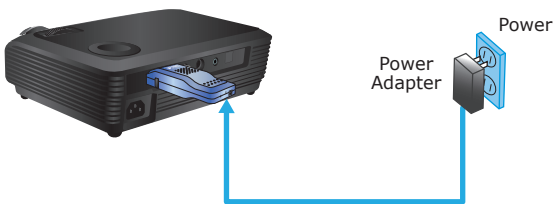
Rear Panel Description



- 2 -

3. Hardware Installation

Step 1: Please turn on your projector first, and connect the WPG-130N to the projector via VGA port. Now you can power on WPG-130N.



Step 2: When the projector shows the default screen as below, it indicates WPG-130N is ready now.

SSID: WPG-130N
Channel: 6
Security: OFF
Server IP: 192.168.1.1
Resolution: 1024 x 768
Version: 1.0.0.0



SSID: WPG-130N
Channel: 6
Security: OFF
Server IP: 192.168.1.1
Resolution: 1024 x 768
Version: 1.0.0.0

- 3 -

4. Software Installation – Windows

Default SSID: **WPG-130N**
Default IP Address: **192.168.1.1**
Default Username: **admin**
Default Password: **admin**

Step 1: Site survey the wireless signal of WPG-130N, and connect your PC with it wirelessly.



* The connection information can be found from the projector screen.

- 4 -

Step 2: Open the web browser and it will redirect to WPG-130N home page automatically, or you can enter the default IP address 192.168.1.1 to access it.



Step 3: Download the client utility (WPG) of Windows 7/Vista/XP and execute it. After installing the program, you'll see WPG shortcut on your PC desktop.



Step 4: Launch WPG on the desktop, and then input the login code. The login code can be found from the projector screen.



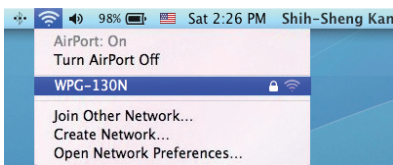
Please make sure the firewall in Windows will allow the WPG software to pass through.

Step 5: Click the ▶ button to start projection, or choose one of the numbers 1~4 to project to the split screen.

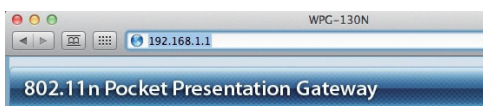


Software Installation – Mac OS X

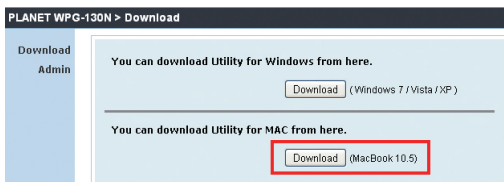
Step 1: Enable your WiFi and connect to WPG-130N.



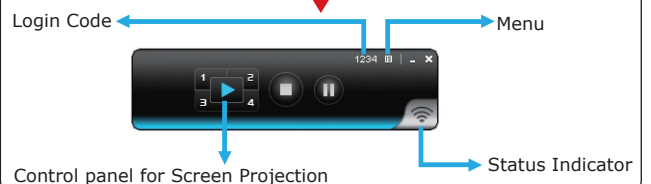
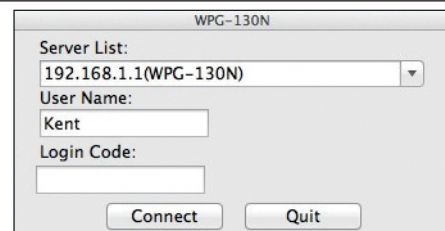
Step 2: Open the web browser and enter the default IP address 192.168.1.1 to access the WPG-130N home page.



Step 3: Download the client utility (WPG) of Mac OS X and execute it.



Step 4: Launch WPG software and enter the login code.



Further Information :

The above steps introduce simple installations and configurations for WPG-130N. For further configurations of the utility (WPG), Virtual Extended Screen, and Wi-Fi AP-Client etc, please refer to the user's manual in the CD. If you have further questions, please contact the local dealer or distributor where you purchased this product.