

## User's Manual

**IKVM-17080 / IKVM-17160**

***Drawer 8/16 Port Combo-Free IP  
KVM Console with 17" LCD  
Display***



## Copyright

Copyright (C) 2012 PLANET Technology Corp. All rights reserved.

The products and programs described in this User's Manual are licensed products of PLANET Technology. This User's Manual contains proprietary information protected by copyright, and this User's Manual and all accompanying hardware, software, and documentation are copyrighted.

No part of this User's Manual may be copied, photocopied, reproduced, translated, or reduced to any electronic medium or machine-readable form by any means by electronic or mechanical. Including photocopying, recording, or information storage and retrieval systems, for any purpose other than the purchaser's personal use, and without the prior express written permission of PLANET Technology.

## Disclaimer

PLANET Technology does not warrant that the hardware will work properly in all environments and applications, and makes no warranty and representation, either implied or expressed, with respect to the quality, performance, merchantability, or fitness for a particular purpose.

PLANET has made every effort to ensure that this User's Manual is accurate; PLANET disclaims liability for any inaccuracies or omissions that may have occurred.

Information in this User's Manual is subject to change without notice and does not represent a commitment on the part of PLANET. PLANET assumes no responsibility for any inaccuracies that may be contained in this User's Manual. PLANET makes no commitment to update or keep current the information in this User's Manual, and reserves the right to make improvements to this User's Manual and/or to the products described in this User's Manual, at any time without notice.

If you find information in this manual that is incorrect, misleading, or incomplete, we would appreciate your comments and suggestions.

## FCC

This device has been tested and found to comply with Part 15 of the FCC Rules. Operation is subject to the following two conditions:

- (1) This device may not cause harmful interference
- (2) This device must accept any interference received. Including interference that may cause undesired operation.

## CE

This equipment is in compliance with the requirements of the following regulations: EN 55 022: CLASS A

### WEEE regulation



To avoid the potential effects on the environment and human health as a result of the presence of hazardous substances in electrical and electronic equipment, end users of electrical and electronic equipment should understand the meaning of the crossed-out wheeled bin symbol. Do not dispose of WEEE as unsorted municipal waste and have to collect such WEEE separately.

## Trademarks

The PLANET logo is a trademark of PLANET Technology. This documentation may refer to numerous hardware and software products by their trade names. In most, if not all cases, these designations are claimed as trademarks or registered trademarks by their respective companies.

## Revision

User's Manual for Drawer 8/16 Port Combo-Free IP KVM Console with 17" LCD Display

Model: IKVM-17080/17160

Rev: 1.0 (March, 2012)

Part No. EM-iKVM-17080/17160\_v1.0

## Safety Instructions

1. Please disconnect this equipment from AC outlet before cleaning. Don't use liquid or sprayed detergent for cleaning. Use moisture sheet or clothe for cleaning.
2. For pluggable equipment, the socked-outlet shall be installed near the equipment and shall be easily accessible.
3. Please keep this equipment from humidity.
4. Lay this equipment on a reliable surface when install. A drop or fall could cause injury.
5. Do not leave this equipment in an environment unconditioned, storage temperature above 60 °C, it may damage the equipment.
6. The opening on the enclosure is for air convection hence the equipment from overheating. DO NOT COVER THE OPENING.
7. Make sure the voltage of the power source connect the equipment to the power outlet.
8. Please keep the power cord such a way that people can not step on it. Do not place anything over power cord. The power cord must rate for the voltage and current marked on the product's electrical ratings label. The voltage and current rating of the cord should be greater than the voltage and the current rating marked on the product.
9. All cautions and warning on the equipment should be noted.
10. If the equipment is not in use for long time, disconnect the equipment from mains to avoid being damaged by transient over-voltage.
11. Never pour any liquid into ventilation openings; this could cause fire or electrical shock.
12. Never open the equipment. For safety reason, qualified service personnel should only open the equipment.
13. If one of the following situations arises, get the equipment checked by service personnel.
  - The Power Cord or plug is damaged.
  - Liquid has penetrated into the equipment.
  - The equipment has been exposed to moisture.
  - The equipment has not worked well or you can not get it work according to User's Manual.
  - The equipment has dropped and damaged.
  - If the equipment has obvious signs or breakage



# Index of Contents

Safety Instructions .....	I
Index of Contents .....	I
<b>1. General Information .....</b>	<b>1</b>
1.1 Packing List .....	1
1.2 Product Feature .....	1
1.3 Product Specification .....	2
<b>2. Installation .....</b>	<b>4</b>
2.1 Before Installation .....	4
2.2 Hardware Kits Contents .....	5
2.3 LCD Components .....	7
2.4 Connecting the Console .....	8
2.5 Web Management .....	9
<b>3. OSD Operation .....</b>	<b>10</b>
3.1 Panel Controls and LCD OSD Function .....	10
3.2 KVM OSD Function .....	12
3.2.1 Manual Key .....	12
3.2.2 Hot Key and Mouse Clicking .....	12
3.2.3 OSD (On Screen Display) .....	12
<b>4. Remote Usage .....</b>	<b>19</b>
4.1 Prerequisite .....	19
4.2 Login and Logout .....	20
4.2.1 Login .....	20
4.2.2 Logout .....	22
4.3 The Remote Console .....	22
4.3.1 Remote Console Control Bar .....	22
4.3.2 Remote Console Status Line .....	27
<b>5. Menu Options .....</b>	<b>28</b>
5.1 Remote Control .....	28
5.1.1 KVM Console .....	28
5.1.2 Telnet/SSHConsole .....	28
5.1.3 Remote Wakeup .....	29
5.2 Virtual Media .....	32
5.2.1 Drive Redirection .....	32
5.2.2 Virtual Drive .....	33
5.2.3 CD/DVD Image .....	34

<b>5.3 User Management .....</b>	<b>36</b>
<b>5.3.1 Change Password .....</b>	<b>36</b>
<b>5.3.2 Users .....</b>	<b>36</b>
<b>5.4 KVM Settings .....</b>	<b>37</b>
<b>5.4.1 User Console .....</b>	<b>37</b>
<b>5.4.2 Keyboard/Mouse .....</b>	<b>40</b>
<b>5.4.3 Video .....</b>	<b>41</b>
<b>5.5 Device Settings.....</b>	<b>42</b>
<b>5.5.1 Network.....</b>	<b>42</b>
<b>5.5.2 Dynamic DNS .....</b>	<b>44</b>
<b>5.5.3 Security .....</b>	<b>46</b>
<b>5.5.4 Certificate .....</b>	<b>48</b>
<b>5.5.5 Serial Port .....</b>	<b>49</b>
<b>5.5.6 Date / Time.....</b>	<b>49</b>
<b>5.5.7 Event Log .....</b>	<b>50</b>
<b>5.5.8 Authentication .....</b>	<b>51</b>
<b>5.5.9 USB .....</b>	<b>52</b>
<b>5.5.10 Config File.....</b>	<b>52</b>
<b>5.6 Maintenance .....</b>	<b>52</b>
<b>5.6.1 Device Information .....</b>	<b>52</b>
<b>5.6.2 Even log.....</b>	<b>53</b>
<b>5.6.3 Unit Reset.....</b>	<b>54</b>
<b>Appendix A Cable Connectors Specifications .....</b>	<b>55</b>
<b>Appendix B Troubleshooting &amp; Frequently Asked Questions.....</b>	<b>56</b>

# 1. General Information

The PLANET IKVM-17080 / IKVM-17160 is the drawer KVM with single-rail console design offering industrial level input solution, which optimizes your space utilization by controlling your systems in just 1U space on the rack. The separate rail design helps users to use the 8/16-Port combo-free KVM easily. Users do not have to prop the heavy console during the installation but just lock the rails into the rack and then pull the KVM console into the rails.

The IKVM-17080 / IKVM-17160 captures, digitizes and compresses video signal, then transmits it with keyboard and mouse signals through IP network. Multiple remote sites can monitor the same PC server simultaneously. With HTTPS/SSL authentication and data encryption, the IKVM-17080 / IKVM-17160 provides a non-intrusive solution for remote access and control. The remote access and control software operates on its embedded processors only, but not on mission critical servers, so that there would be no interference with server operation or decrease on the network performance.

The combo-free KVM Switch modules are loaded with rich features, such as one local console port, Daisy chain capability, On Screen Display (OSD) menu, Password security, Searching PC server name, Hot key control, Push button and Auto-Scan control, complete keyboard and mouse emulation for simultaneously PC boot-up processes.

## 1.1 Packing List

The complete package consists of:

- One 1.8 m KVM cable. (HDB-15 / VGA + PS/2 x 2)
- One 1.8m power cord
- One user's manual CD
- One quick installation guide
- Two Rack mount bracket kit
- One Rack Mount Screw pack

Check to make sure that the unit was not damaged in shipping. If you encounter a problem, contact your dealer.

Please read this manual thoroughly, and follow the installation and operation procedures carefully to prevent any damage to the product, and / or any of the devices that connect to it.

## 1.2 Product Feature

- Remote mass storage control
- 19" rack mount 1U size design, easy to install
- Cascade controls up to 64 computers from single consol
- No Software Required easy PC selection via On Screen Display (OSD) menu, Push Buttons, Hot Keys
- Supports Combo KVM module to connect servers / KVM via USB & PS/2 connection
- Fully supports Logitech / Microsoft / IBM PS/2 mouse / trackball and compatible PS/2 mouse / trackball
- High Video Quality : resolution up to 1920 x 1440 (local side) or 1600 x 1200 (remote side)
- Supports SSL protocol for any encrypted network traffic between itself and a connected client
- Heavy-Duty Electroplate Steel
- Supports hot plug; not necessary to turn off the original system regardless of a newly installed PC or KVM
- Supports password protection and PC server name search

### 1.3 Product Specification

Model	IKVM-17080		IKVM-17160
Hardware Interface			
PC Port	8		16
PC Port Connector (All Female Type)	Keyboard	3-in1 HDDB 15 pin Female	
	Mouse		
	Monitor		
Console Connection	Keyboard	Mini DIN 6 pin Female	
	Mouse	Mini DIN 6 pin Female	
	Monitor	HDDB 15 pin Female	
	Mouse USB	USB (TYPE A)	
	Keyboard USB (Female)	USB (TYPE A)	
Keyboard Mouse	105 key keyboard with touch pad		
Touch pad	1000 points/ inch (40 points/mm)-graphics tablet mode		
Control Feature			
Max. PC Connections	64 (by cascade 8 KVM-810)		256(by cascade 16 KVM-1610)
Port Selection Keys	8		16
PC Selection	On Screen Display Menu / Hot Key / Button		
KVM Video Resolution	Up to 1920X1440 60Hz		
Hardware Specification & Environment			
Display Size	17 inches		
Panel Type	4CCFL LCD Panel		
LCD Resolution Capabilities	Maximum Resolution up to 1280 x 1024 (SXGA)		
Pixel Pitch	Supports 0.264(H) x 0.264(V) / 0.294(H) x 0.294(V)		
Backlight lifetime	50,000 hrs		
Operating System	Windows 98SE/ ME/ 2000/ XP/ 2003/ Vista/ 7 Server, Linux, Mac OS9/ OSX and Sun Microsystems		
Chassis Construction	Heavy duty steel materials		



Rail slide Dimension	45 cm (extended length 22cm)
Dimension (W x D x H)	440 x 450 x 44 mm
Weight	10.5 Kg
Environmental Specification	<p>Operate: 5 ~ 40 Degree C (41 ~ 104 Degree F)</p> <p>Storage: -20 ~ 60 Degree C ( -4 ~ 140 Degree F)</p> <p>Relative humidity: 0 ~ 80% (non-condensing)</p>
Power Requirement	Universal 100~240V AC input
Certification	FCC, CE

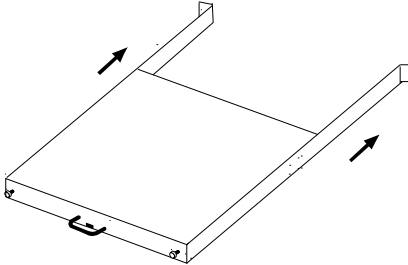
## **2. Installation**

### **2.1 Before Installation**

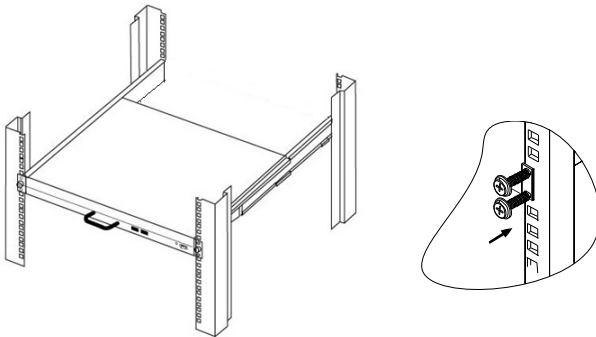
1. Please check all peripherals according the list before installation. To make sure of the whole unit was not damaged and lost during shipping process. If you encountered any problem, please contact your dealer.
2. Before installation, make sure all peripherals and computer have been turned off.
3. The standard brackets are for 500 ~ 800 mm (distance means front bracket to rear bracket) cabinet, contact your dealer if you need longer rear brackets.
4. If your cabinet depth is above 800 to 1000 mm, please contact your dealer for the stretch rails and replace it for your demand.
5. Reliable accessories of rack-mounted equipment should be maintained. Particular attention should be given to supply connections other than direct connections to the branch circuit.
6. The KVM and console are a little bit heavy, please prevent these devices from falling down during the installation. That may make some people hurt and the console damage.

## 2.2 Hardware Kits Contents

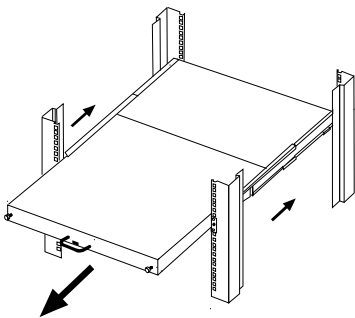
1. Adjust rail with pull or push to fit your cabinet



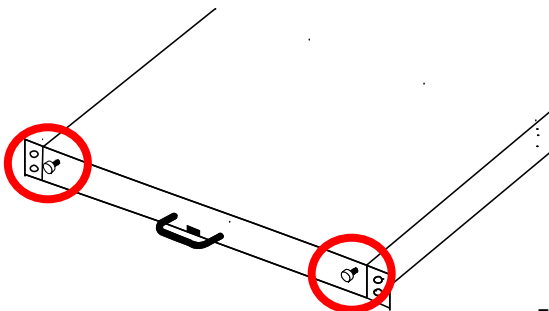
2. Install front and rear bracket on cabinet.



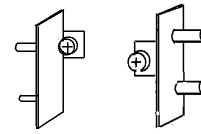
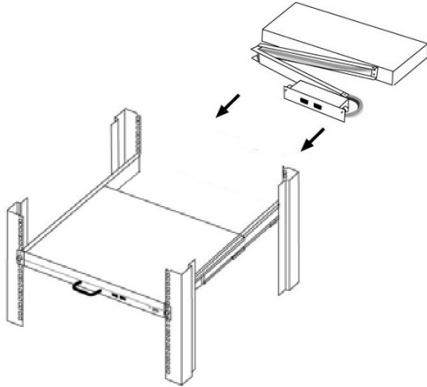
3. Repeat step 1~2 for the other side.
4. Pull the console until rails automatically are locked. When users hardly push the console and it can be unlocked by the power is over 4kg.



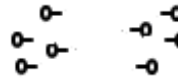
5. Pull and turn the lock knobs (left and right at the same time) then users can open console to operate.



6. Put the KVM module into the console from the back. There are two ways to install the KVM module in suitable position, users can fix KVM module with the KVM accessories (Both sides) or the extra Rack- mounted Screws (Bothsides).

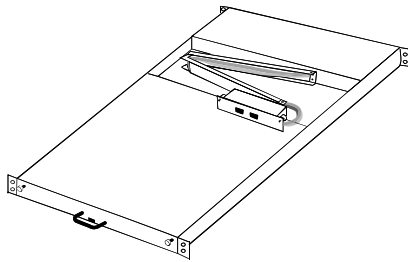


KVM accessories (L& R) X2

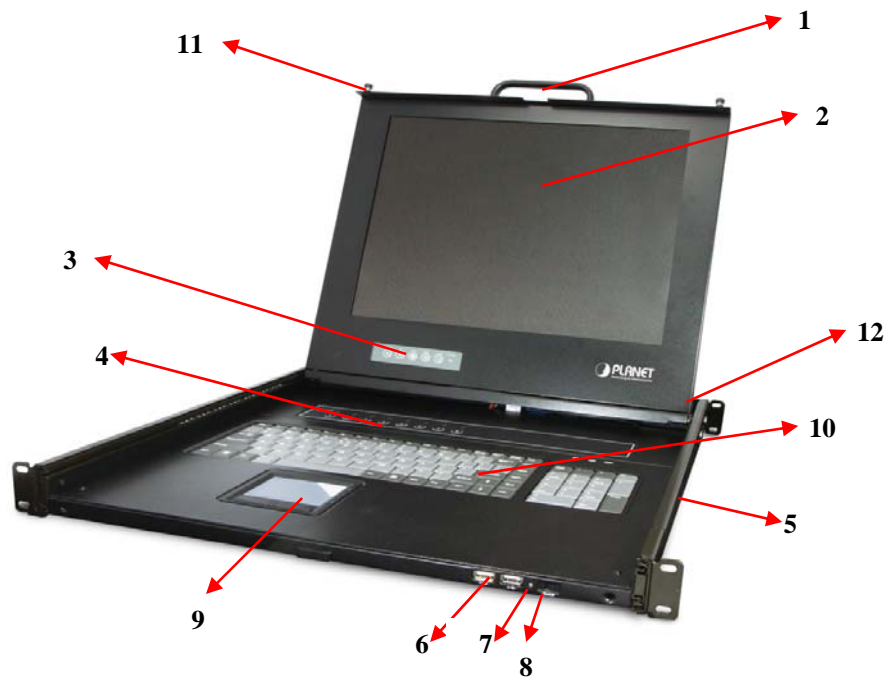


Extra rack- mounted Screws X8

7. Finish installation as below.



## 2.3 LCD Components



No.	Component	Function Description
1	Handle Holder	Pull to Slide the LCD console in or out
2	LCD Display	Panel Display
3	LCD Panel OSD Buttons	Controls Display Required Quality
4	LED Indicators	Switching Operation for KVM Module ( Optional )
5	Slide Rail	Single Slide Rail
6	USB Ports x 2 (K/B, Mouse)	Plug-in external K/B and Mouse.
7	Power LED	Indicates Power Status
8	Power Switch	Turn on / Turn off
9	Touch Pad	Mouse Operation
10	Keyboard Module	Keyboard Operation
11	LCD Lock Screws	Fix or Release LCD panel
12	8/ 16 ports KVM	Modular KVM for 8/ 16 ports

## 2.4 Connecting the Console

To connect an LCD console to a computer, perform the following steps

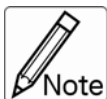
### 8 Port of KVM



### 16 Port of KVM



1. Turn off your computer. You should always turn off your computer before connecting or disconnecting a device.
2. Connect the video (VGA) connector of the KVM cable to the video card connector on the rear panel of your computer.
3. Identify and connect the PS/2 mouse and PS/2 keyboard connector to the correct PS/2 ports on the rear panel of your computer. Or you can use USB interface to connect your computer (Use PS/2-USB switch to select your interface). The switch has to be on PS/2 side when you use PS/2 interface connector.)



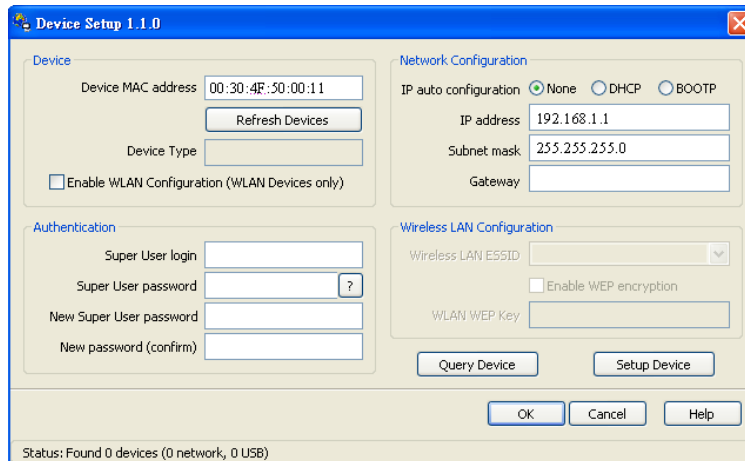
**Please don't plug PS/2 and USB cables at the same time**



## 2.5 Web Management

If you have installed the IP-KVM on a network that enables DHCP, you can use the **PSetup** to find out the IP-KVM's IP.

1. Run "psetup\_1.1.0.exe" from the CD



2. Please click on Refresh button to find your IKVM-17080/17160 in the network. You can find the MAC address labeled on the bottom side of the IP-KVM module. MAC address is detected as connection from computer and IP-KVM is valid through USB or network.
3. [DHCP server available in the Network] Launch Web Browser and key in the IP address of the IKVM-17080/17160. Please configure your PC to the same IP subnet as well.
4. [DHCP server not available in the Network] Launch Web Browser and key in the default IP address of the IKVM-17080/17160. If there is no DHCP server in the network, your IKVM-17080/17160 will use IP address **192.168.0.20** as its default. Please configure your PC to the same IP subnet as well.
5. As soon as the Web browser start up, IKVM-17080/17160 will prompt for User name and Password. Please key in "**super**" and "**pass**".
6. You may now start to configure your IKVM-17080/17160 such as Remote Control, Network Configuration, and so on.

### 3. OSD Operation

#### 3.1 Panel Controls and LCD OSD Function


Controls	Description
	Soft power on/off button. Adjacent LED is lit when on.
<b>Menu</b>	To access the main menu. This button also acts as the “Enter” button.
<b>Auto</b>	Auto-synchronize and scale down display to any valid factory preset timings.
<b>▲UP</b>	Press to scroll the function you want to adjust.
<b>▼DOWN</b>	Press to scroll the function you want to adjust.

Table 3.1 Panel Controls

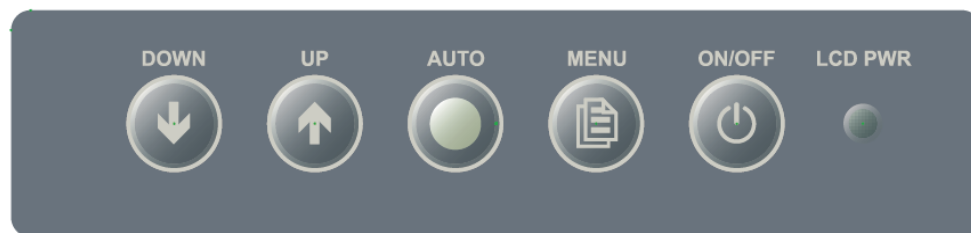


Figure 3-1. OSD Control Bar

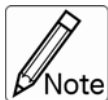
Controls	Description
<b>AUTO</b>	Automatically size, centers direction and fine tunes Video signal to eliminate “noise” and direction
<b>BRIGHTNESS</b>	Adjusts back ground black level of the screen image
<b>CONTRAST</b>	Adjusts for ground white level of the screen image
<b>SHARPNESS</b>	Adjusts the clarity and focus of the screen image
<b>H.POSITION</b>	Moves the screen image left or right
<b>V.POSITION</b>	Moves the screen up or down
<b>CLOCK</b>	Adjusts image distortion appearing as vertical bars or “noise” on the screen
<b>PHASE</b>	Adjusts image distortion appearing as horizontal “noise” on the screen
<b>COLOR METER</b>	Adjusts color temperatures for users
<b>LANGUAGE</b>	Allows you to choose from among five languages as English, French , German , Italia , Simplified Chinese,

	Espanola, and Nederland
<b>SPEAKER</b>	Volume control
<b>OSD V.POSITION</b>	Adjust operation of up/down on the screen
<b>OSD H.POSITION</b>	Adjust operation of right/left on the screen
<b>OSD OFF TIME</b>	OSD “time of staying” on the screen
<b>RECALL</b>	Returns all controls back to factory sorting
<b>SOURCE</b>	Analog/Digital signal choice
<b>EXIT/SAVE</b>	Exit OSD control

## 3.2 KVM OSD Function

### 3.2.1 Manual Key

It is the simplest switching method. You just need to press the Port Selection Switch on the front panel of the KVM. The Selection LED (Red) is on, indicating that you are switching to the corresponding port.



1. The Port Selection Switch functions only when connected to a PC.
2. If the Offline Skip of the OSD System Setting is Auto, then you can not make any switch when pressing an offline Port Selection switch.
3. For Auto Scan Mode, none of the Port Selection Switches functions

### 3.2.2 Hot Key and Mouse Clicking

Hot key and mouse clicking are applicable for switching a small section. You can select the SVS (Smart View Setting) from the OSD of the PC first (for a quick switch of PC) and use the keyboard (press the **Ctrl** key twice) or the mouse (press and hold the middle button while pressing the left or right button) to switch to the previous or next set of PC.



The mouse must have at least 3 keys. As far as you select a PC with the SVS, you can use this method for the switch.

### 3.2.3 OSD (On Screen Display)

Press the NumLock on the keyboard twice or simultaneously press the Push Buttons 1 and 2 of the Port Selection Switch on the KVM panel to start the OSD. Use the key Up, Down and Enter keys on the keyboard to switch or directly move the mouse to the target PC, and then double click the left button.

Additionally, you also can use the numeric keys to enter the direct switch. For example, if you want to switch a PC to the Slave KVM port 04 under the Master KVM port 03, then you can start the OSD and then directly enter 0304. If you are using a standalone machine, then just enter the first two digits.

More OSD related information is given in the following OSD sections.

#### Start

Press the NumLock twice or the Port Selection Switches 1 and 2 on the panel to enter the OSD.



If you have modified the Hot Key for starting the OSD and are unable to enter the OSD by pressing NumLock, then you can start the OSD by using Port Selection Switch first, and then press F9 to enter into the System Setting to modify the options of the OSD Entry Hot Key.

If you have modified the Hot Key for starting the OSD and are unable to enter the OSD by pressing NumLock, then you can start the OSD by using the Port Selection Switch first, and then press F9 to enter into the System Setting to modify the options of the OSD Entry Hot Key.

## Operation

You can operate the options by keyboard or mouse. For the keyboard operation, besides the common Up and Down keys, there are special function keys such as Enter, Space Bar, Function Key (F1, F4...) under the OSD remark field. For the mouse operation, the left key refers to Enter and the right key refers to Exit. For example, move the mouse point to your desired PC, and click the left key. The selection bar will move to that position and then click the left key again for the execution.



You must use the keyboard to complete the two functions: Name Edit and Password.

## Switch Menu

### Master List

1	{	03-04:Mail Ser 4			
2	{	LIST: MASTER			
	{	PWR	C#	KVM	NAME SVS
	{	• 01		Admin	⊕
	{	• 02			⊖
	{	• 03	04	Mail Group	O
3	{	04			⊖
	{	• 05		Peter	⊕
	{	• 06	08	Web Group	O
	{	• 07	16	Data Group	O
	{	08			⊖
4	{	⏏ ⏏↑↓: Move	Space: Edit	Esc: Exit	
	{	F1: Smart View	Enter: Switching		
	{	F4: Auto Scan	F9: System Setting		
	{	F5: Clear Name List			

### Slave List

03-04:Mail Ser 4				
LIST: Mail Group				
PWR	C#	KVM	NAME	SVS
•	01		Mail Ser 1	⊖
•	02		Mail Ser 2	⊖
•	03		Mail Ser 3	⊕
•	04		Mail Ser 4	⊕
⏏ ⏏↑↓: Move      Space: Edit      Esc: Exit F1: Smart View      Enter: Switching F4: Auto Scan      F9: System Setting F5: Clear Name List				

1 、 This field provides the information of the currently connected PC. As shown in the figure above, 03 refer to the Port Number of the Master; 04 refer the Port Number of the Slave; and Mail Ser 4 is the name of this PC defined by Users. If a PC connects to the Master, then the number consists of the first two digits. If a User has not given a name for the PC, the name field will be blank.

2 、 This field shows the list of the Master KVM or a certain set of Slave KVM currently displayed on the OSD. We recommend you to give a name to the Slave KVM, or else the display after LIST: will be blank.

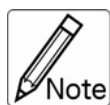
3 、 This field shows the list of connections to the KVM, and the fields are described below :  
 PWR: It shows the status of power supply and indicates a normal power supply for the equipment (PC or KVM) connected to the CPU port.

**C#:** It shows the channel number; the CM-1204 will display 01~04; the CM-1208 will display 01~08 and the CM-1216 will display 01~08; 09~16 (Since the screen cannot display all at a time, therefore you can use PgUp/PgDn to switch the pages).

**KVM:** It shows the KVM model. If there is a number in this field, it shows that a set of KVM connects to this port. The number 04 indicates Port 4 and 08

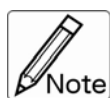


indicates Port 8 and 16 indicates Port 16 and so on.



If the connected KVM is not on, there will have no number in this field.

**NAME:** It shows the name of the equipment, and users can name the Slave KVM or PC on their own. There are a total of 12 characters selected from the group of “A~Z”, “a~z”, “0~9”, “+”, “-”, “\*”, “/”, “=”, “[”, “]”, “,”, “.”, “:”.



Please use the CapsLock to toggle the upper and lower cases.

**SVS:** It shows the Smart View Setting; use ⊕ to open and ⊖ to close. The SVS is blank and not clickable if the KVM is connected in parallel. If this option is set to open, then you can make the switch by operating the Hot Key Switch or Mouse Clicking or selecting the option by Auto Scan. You also can use mouse to click this field.

**Selection BAR:** It shows the selection bar (Green); you can use the ↑↓ keys on the board to move the selection bar, and the situated position indicates the selected target for giving instructions. For example, if the selection bar points at C#05 and you press Enter, then the system will switch to that particular PC or press the “Space BAR” to start editing the name. Press F4 to enable/disable the SVS option.

#### 4 · Instruction Hint Field:

 <b>(Move)</b>	Use the ↑↓ keys on the keyboard or the mouse to move the selection bar
<b>SPACE:</b> <b>(Edit)</b>	The “Space BAR” on the keyboard is used to start editing the name of the PC or KVM.
<b>ESC:</b> <b>(Exit)</b>	Use the “Esc” key on the keyboard to exit the current option or exit OSD.
<b>F4:</b> <b>(Auto Scan)</b>	Use the F4 key to run Auto Scan, and you can set the residing time, channel display time and mode of the Auto Scan from System Setting.
<b>F9:</b> <b>(System Setting)</b>	Use the F9 key to enter into the System Setting Menu.
<b>F5:</b> <b>(Clear Name List)</b>	Use the F5 key to clear the values of all Name fields. If you clear the name list under the Master

	screen, then you will also clear the name lists under all slaves. If you clear the name list under a certain slave, then you only clear the name list under that particular Slave KVM.
<b>F1:</b> (Smart View)	It switches the Smart View Setting.

• **System Setting Menu**

System Setting	
<b>Channel Display Mode</b>	Full
<b>Channel Display Tim</b>	5 Sec
<b>Auto Scan Time</b>	5 Sec
<b>OSD Entry Hot Key</b>	Number Lock
<b>Hot Key Switching</b>	OFF
<b>Mouse Clicking</b>	OFF
<b>Beeper Sound</b>	ON
<b>Offline Skip</b>	Manual
<b>OSD Language</b>	English
<b>Security Level</b>	None
<b>Console Lock Time</b>	5 Min
<b>↑↓</b>	Move
<b>Space</b>	Change
<b>Esc</b>	Exit
<b>F1</b>	Information
<b>F4</b>	OSD Position
<b>F8</b>	Restore Default Setting

Item	Description	Default	Other Selection
<b>Channel Display Mode</b>	For Port Switching, Auto Scan and OSD Close, the Monitor will show the Channel information and mode selection.	Full	Number, Name
<b>Channel Display Time</b>	It shows the time for displaying channel information.	5 Sec	10Sec, Always, None

<b>Auto Scan Time</b>	For Auto Scan, it shows the residing time for each port.	5 Sec	10Sec, 20Sec, 30Sec, 60Sec
<b>OSD Entry Hot Key</b>	Select to turn on the hot keys of the OSD control screen.	NumLock	Scroll Lock, Shift, None
<b>Hot Key Switching</b>	Turn on/off the “Ctrl” hot keys on the keyboard for switching computer functions.	OFF	ON
<b>Mouse Clicking</b>	Turn on/off the keys of the mouse for switching computer functions.	OFF	ON
<b>Beeper Sound</b>	Turn on/off the beeper sound function.	ON	OFF
<b>Offline Skip</b>	Set the offline skip function to auto or manual.	Manual	Auto
<b>OSD Language</b>	Select the language for the OSD.	English	Francis, Deutsch, Italian, Espanola
<b>Security Level</b>	Select the security mode and level.	None	Low, High
<b>Console Lock Time *1</b>	The lock time of console port.	5 Min	1Min, 3Min, 10Min, 30Min, 60Min

\*1: You can select this option only if the Security Level is not “None”.

**F1:** Information; It provides the model name and F/W version information, which is helpful for users to understand the updated version.

**F4:** OSD Position; you can enter the OSD position to make adjustments; we recommend you to unify the resolution for all computer display mode, and use this function again to adjust the OSD position. You can use the Up, Down, Left or Right keys on the keyboard or a mouse to move the OSD position.

**F8:** Restore Default Setting; Restore the factory default settings. Please note that all name lists will be cleared and the system settings are set to the default settings as shown

in the table above.

**Esc:** Exit; Exit the system setting and close the OSD. If you have made changes in this option, the system will ask whether or not you want to save the setting before the selected option is effective.

**Auto Scan Mode:** You can start the OSD first and press “F4” to enter the Auto Scan Mode. If you want to scan the PC, you must use the Smart View Setting to select the Auto Scan Time in the System Setting for the residing time, which includes 5 sec, 10 sec, 20 sec, 30 sec and 60 sec. You can adjust the Channel Display Mode and Channel Display Time from the Channel Display mode. By then, all keys on the panel, keyboard and mouse are not operable. You can only use the ESC key to exit the Auto Scan Mode.

**Security Mode:** Switch the Security Level from “None” to “Low” in the System Setting, and enter your Password (“A~Z”, “0~9”, a maximum of 12 characters), and the security will be effective after you confirm the Password. The use of the Console Lock Time is to set the time to enter a security mode after the keyboard and mouse has idled for a predetermined time. Once you enter into the security mode, you need to enter the correct password before you can move the mouse or enter any key from the keyboard. You need a correct password to operate the whole system normally.

**Important Note: What should I do if I forgot my Password?**

After you enter a wrong password for 5 consecutive times, a time delay bar will appear, and a set of “Magic Numbers” will show up at the bottom. Record the magic numbers and contact with your distributor.

**Console - Reconfirmed:** Simultaneously press the largest two numbered Port Selection Switches on the panel to start the Console- Reconfirmed. If you change the Console equipment, please use this function to let KVM reconfirm the equipment at the Console end once.

**EDID & DDC:** A vast majority of computer monitors supports the Extended Display Identification Data (EDID) and allows data access by Display Data Channel (DDC). The KVM also supports these two specifications, but the KVM only reads the EDID of the Monitor when the KVM is on. If it is necessary to change monitors during an operation, please use the Console Reconfirmed function to read the EDID again.

## 4. Remote Usage

### 4.1 Prerequisite

The IKVM-17080/IKVM-17160 feature an embedded operating system and applications offering a variety of standardized interfaces. This chapter will describe both these interfaces, and the way to use them in a more detailed manner. The interfaces are accessed using the TCP/IP protocol family, thus they can be accessed using the built-in Ethernet port.

The following interfaces are supported:

#### HTTP/HTTPS

The IKVM-17080 / IKVM-17160 can be entirely managed using a standard web browser. You can access the IKVM-17080 /16010 using the insecure HTTP protocol, or using the encrypted HTTPS protocol. Whenever possible, use HTTPS.

#### Telnet

A standard Telnet client can be used to access an arbitrary device connected to the IKVM-17080 / IKVM-17160 port via a terminal mode.

The primary interface of the IKVM-17080 / IKVM-17160 is the HTTP interface. This is covered extensively in this chapter. Other interfaces are addressed in subtopics.

In order to use the Remote Console window of your managed host system, the browser has to come with a Java Runtime Environment version 1.1 or higher. If the browser has no Java support (such as on a small handheld device), you are still able to maintain your remote host system using the administration forms displayed by the browser itself.

**Important:** We recommend installing a Sun JVM 1.5 or above.

For an insecure connection to the IKVM-17080 / IKVM-17160, we can recommend the following browsers:

- Microsoft Internet Explorer version 6.0 or higher on Windows 98, Windows ME, Windows 2000, Windows XP, Windows Server 2003 and Win7.
- Netscape Navigator 7.0 or Mozilla 1.6 on Windows 98, Windows ME, Windows 2000, Windows XP, Windows Server 2003, Win7 and Linux and other UNIX-like Operating Systems

In order to access the remote host system using a securely encrypted connection, you need a browser that supports the HTTPS protocol. Strong security is only assured by using a key length of 128 Bit. Some of the old browsers do not have a strong 128 Bit encryption algorithm.

Using the Internet Explorer, open the menu entry “?” and “Info” to read about the key length that is currently activated. The dialog box contains a link that leads you to information on how to upgrade your browser to a state of the art encryption scheme. The picture below shows the dialog box presented by the Internet Explorer 6.0.



Newer web browsers do support strong encryption on default.

## 4.2 Login and Logout

### 4.2.1 Login

<b>Note:</b>	Your web browser has to accept cookies, or else login is not possible.
--------------	--

Launch your web browser. Direct it to the address of your IKVM-17080 / IKVM-17160, which you configured during the initial configuration. The address used might be a plain IP address or a host and domain name, in the case where you have given your IKVM-17080 / IKVM-17160 a symbolic name in the DNS. For instance, type the following in the address line of your browser when establishing an unsecured connection:

http://<IP address of IKVM-17080 / IKVM-17160 >

When using a secure connection, type in:

https://<IP address of IKVM-17080 / IKVM-17160>

This will lead you to the IKVM-17080 / IKVM-17160 login page.

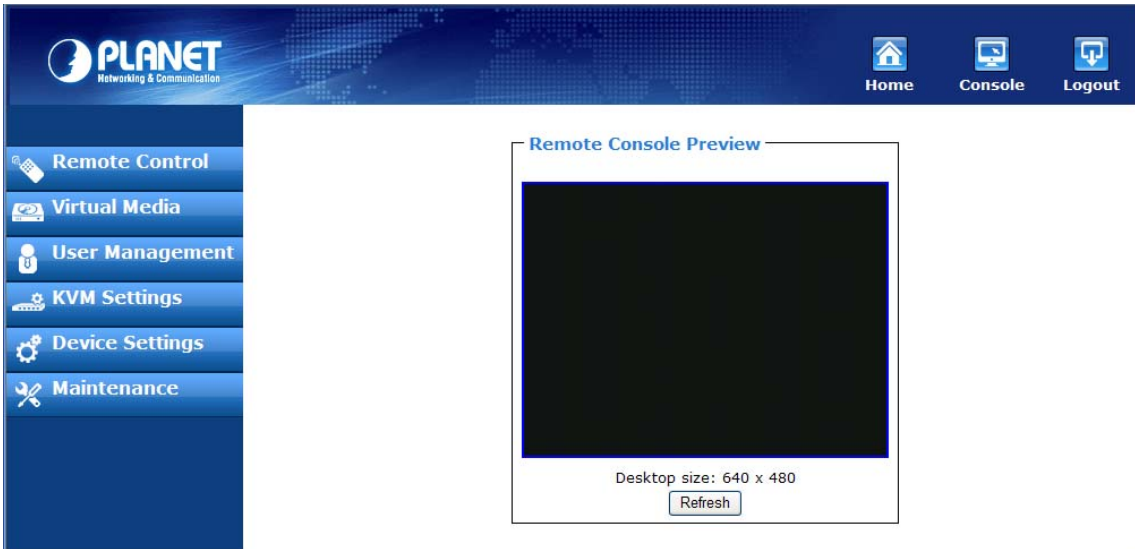
The IKVM-17080 / IKVM-17160 have a built-in super user that has all permissions to administrate the device:

Login name	super (in default)
Password	pass (in default)






<b>Note:</b>	Please change the super user password immediately after the first time login successfully. Not changing the pass phrase for the super user is a severe security risk and might result in unauthorized access to the IKVM-17080 / IKVM-17160 and to the host system including all possible consequences!
--------------	---

Having logged into the IKVM-17080 / IKVM-17160 successfully, the main page of the IKVM-17080 / IKVM-17160 will appear.



This page consists of three parts; each of them contains specific information. The buttons on the upper side allow you to navigate within the front end.

 <b>Home</b>	Return to the main page of the IKVM-17080 / IKVM-17160 .
 <b>Console</b>	Open the IKVM-17080 / IKVM-17160 remote console.
 <b>Logout</b>	Exit from the IKVM-17080 / IKVM-17160 front end.

The lower left frame contains a navigation bar and allows you to switch between the different sections of the IKVM-17080 / IKVM-17160. Within the right frame, task-specific information is displayed that depends on the section you have chosen before.

**Warning:** If there is no activity for half an hour, the IKVM-17080 /16010 will log you out, automatically. A click on one of the links will bring you back to the login screen.

### 4.2.2 Logout



This button logs out the current user and presents a new login screen. Please note that an automatic logout will be performed in case there is no activity for half an hour.

## 4.3 The Remote Console



Clicking on the icon opens an additional Remote Console window. The Remote Console window is a Java Applet that tries to establish its own TCP connection to the IKVM-17080 /16010. The protocol that is run over this connection is neither HTTP nor HTTPS, but RFB (Remote Frame Buffer Protocol). Currently, RFB tries to establish a connection to port number 443. Your local network environment has to allow this connection to be made, i.e. your firewall end, in case you have a private internal network, your NAT (Network Address Translation) settings have to be configured accordingly.

In case the IKVM-17080 /16010 are connected to your local network environment and your connection to the Internet is available using a proxy server only without NAT being configured, the Remote Console is very unlikely to be able to establish the according connection. This is because today's web proxies are not capable of relaying the RFB protocol.

In case of problems, please consult your network administrator in order to provide an appropriate network environment.

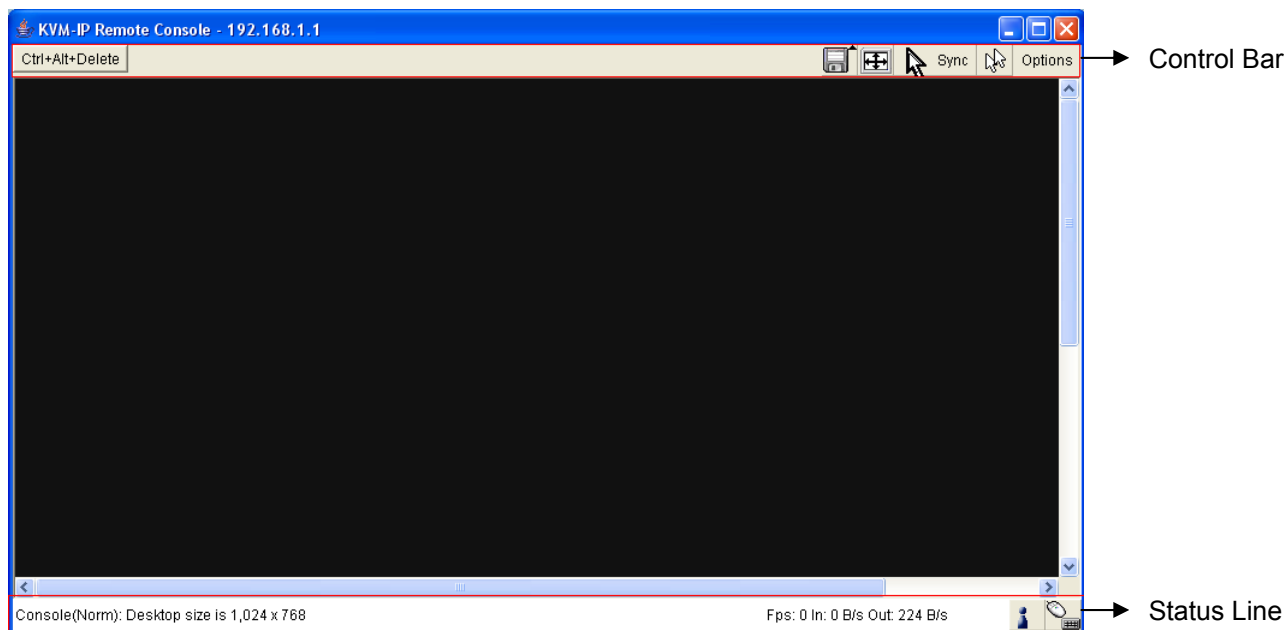
Once the Remote Console is connected, it displays the screen content of your host system. The Remote Console will behave exactly in the same way as if you were sitting directly in front of the screen of your remote system. That means keyboard and mouse can be used in the usual way. However, be aware of the fact that the remote system will react to keyboard and mouse actions with a slight delay. The delay depends on the bandwidth of the network which you use to connect to the IKVM-17080 / IKVM-17160.






With respect to the keyboard, the very exact remote representation might lead to some confusion as your local keyboard changes its keyboard layout according to the remote host system. If you use a German administration system, and your host system uses a US English keyboard layout, for instance, special keys on the German keyboard will not work as expected. Instead, the keys will result in their US English counterpart. You can circumvent such problems by adjusting the keyboard of your remote system to the same mapping as your local one.

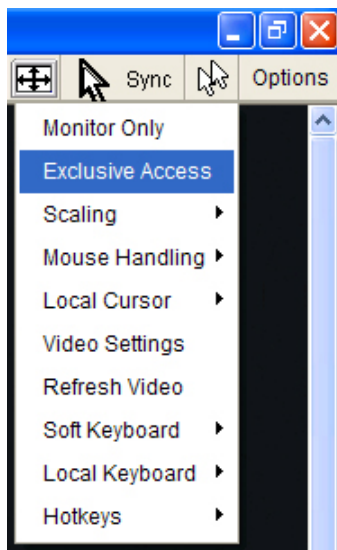
The Remote Console window always tries to show the remote screen with its optimal size. That means it will adapt its size to the size of the remote screen initially and after the screen resolution of the remote screen has been changed. However, you can always resize the Remote Console window in your local window system as usual.

### 4.3.1 Remote Console Control Bar

The upper part of the Remote Console window contains a control bar. Using its elements you can see the state of the Remote Console and influence the local Remote Console settings. A description for each control follows.



Controls	Description
	Special button to send the “Control+Alt+Delete” key combination to the remote system.
 <b>Auto Adjust Button</b>	If the video display is of bad quality or distorted in some way, press this button and wait a few seconds while the IKVM-17080 / IKVM-17160 tries to adjust itself for the best possible video quality.
 <b>Mouse Synchronize Button</b>	Pressing this button to activate the mouse synchronization process. Choose this option in order to synchronize the local with the remote mouse cursor. This is especially necessary when using accelerated mouse settings on the host system. In general, there is no need to change mouse settings on the host.
 <b>Single/Double Mouse Mode</b>	Switches between the Single Mouse Mode (where only the remote mouse pointer is visible) and the Double Mouse Mode (where remote and local mouse pointers are visible and need to be synchronized). Single mouse mode is only available if using SUN JVM 1.5 or higher.
	Click on this button, an Options menu will appear:



A short description of the options follows.

### Monitor Only

Toggles the Monitor only filter on or off. If the filter is switched on, no remote console interaction is possible, and monitoring is possible.

### Exclusive Access

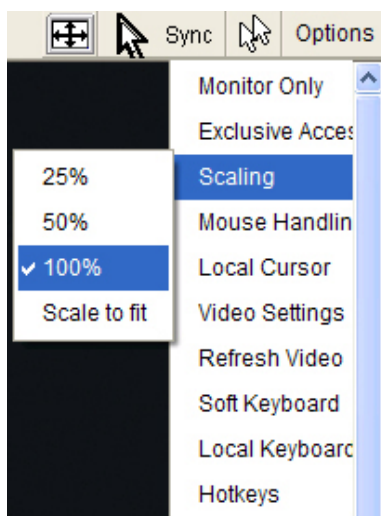
If a user has the appropriate permission, he can force the Remote Consoles of all other users to close. No one can open the Remote Console at the same time again until this user disables the exclusive access, or logs off.

A change in the access mode is also visible in the status line.



### Scaling

Allow you to scale down the Remote Console. You can still use both mouse and keyboard, however the scaling algorithm will not preserve all display details.



## Mouse Handling

The submenu for mouse handling offers two options for synchronizing the local and the remote mouse pointer.

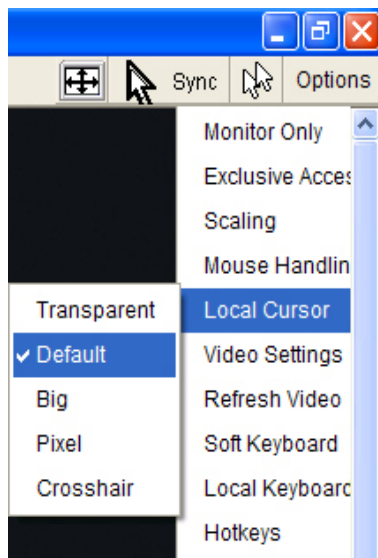
**Fast Sync**--The fast synchronization is used to correct a temporary, but fixed skew.

**Intelligent Sync**--Use this option if the fast sync does not work or the mouse settings have been changed on the host system.

This method takes more time than the fast one and requires a correctly adjusted picture. Use the auto adjustment function or the manual correction in the Video Settings panel to setup the picture.

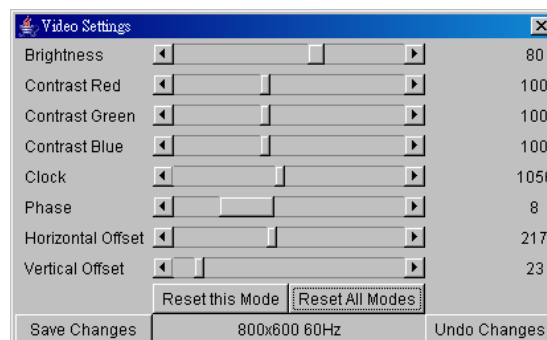
## Local Cursor

Offers a list of different cursor shapes to choose from for the local mouse pointer. The selected shape will be saved for the current user and activated the next time this user opens the Remote Console. The number of available shapes depends on the Java Virtual Machine; a version of 1.2 or higher offers the full list.



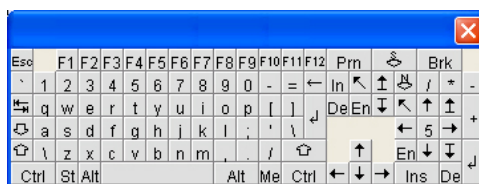
## Video Settings

Opens a panel for changing the IKVM-17080 / IKVM-17160 video settings.



Controls	Description
<b>Brightness</b>	Controls the brightness of the picture.
<b>Contrast</b>	Controls the contrast of the picture.
<b>Clock</b>	Defines the horizontal frequency for a video line and depends on the video mode. Different video card types may require different values here. The default settings in conjunction with the auto adjustment procedure should be adequate for all common configurations. If the picture quality is still bad after auto adjustment, you may try to change this setting together with the sampling phase to achieve a better quality.
<b>Phase</b>	Defines the phase for video sampling, used to control the display quality together with the setting for sampling clock.
<b>Horizontal Position</b>	Use the left and right buttons to move the picture in horizontal direction while this option is selected.
<b>Vertical Position</b>	Use the left and right buttons to move the picture in vertical direction while this option is selected.
<b>Reset this Mode</b>	Reset mode specific settings to the factory-made defaults.
<b>Reset all Modes</b>	Reset all settings to the factory-made defaults
<b>Save Changes</b>	Save changes permanently.
<b>Undo Changes</b>	Restore last settings.

## Soft Keyboard



Opens up the Menu for the Soft-Keyboard.

Controls	Description
<b>Show</b>	Pops up the Soft-Keyboard. The Soft-Keyboard is necessary in case your host system runs a completely different language and country mapping than your administration machine.
<b>Mapping</b>	Used for choosing the according language and country mapping of the Soft-Keyboard.



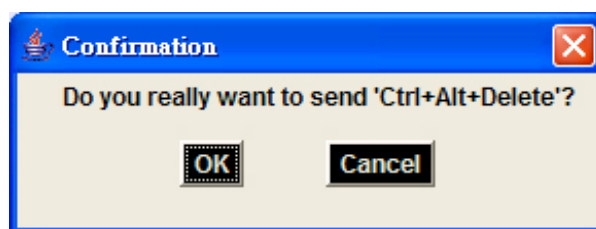
## Local Keyboard

Used to change the language mapping of your browser machine running the Remote Console Applet. Normally, the applet determines the correct value automatically. However, depending on your particular JVM and your browser settings this is not always possible. A typical example is a German localized system that uses an US-English keyboard mapping. In this case you have to change the Local Keyboard setting to the right language, manually.

## Hotkeys

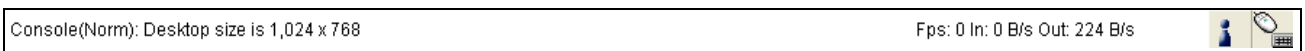
Opens a list of hotkeys defined previously. Choose one entry, the command will be sent to the host system.

A confirmation dialog can be added that will be displayed before sending the selected command to the remote host. Select “OK” to perform the command on the remote host.

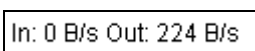


### 4.3.2 Remote Console Status Line

The Remote Console Status Bar shows both console and the connection state. The size of the remote screen is displayed. The value in brackets describes the connection to the Remote Console. “Norm” means a standard connection without encryption, “SSL” indicates a secure connection.

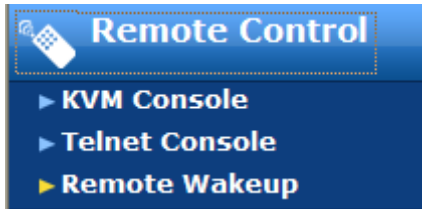


Furthermore, both the incoming (“In:”) and the outgoing (“Out:”) network traffic are visible (in B/s). If compressed encoding is enabled, a value in brackets displays the compressed transfer rate.



## 5. Menu Options

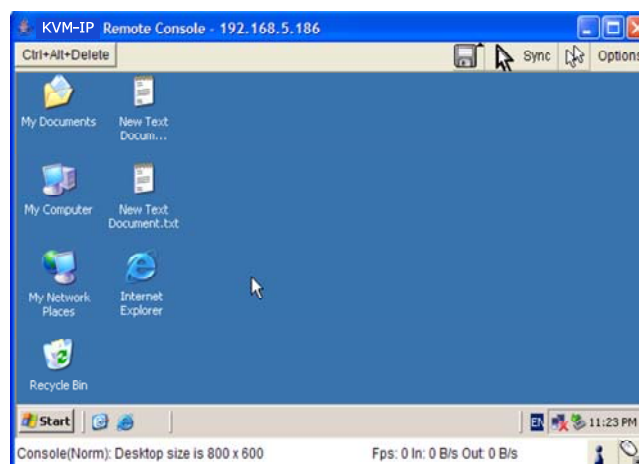
### 5.1 Remote Control



The Remote Console is the redirected screen, keyboard and mouse of the remote host system that IP-KVM controls. The Remote Console window is a Java Applet that tries to establish its own TCP connection to the IKVM-17080 / IKVM-17160.

Starting the Remote Console opens a new window displays screen movement of host system, with its size automatically adjusted to optimum. Keyboard and mouse are redirected to control the host system simultaneously. A slight delay may present depending on the bandwidth of network.

#### 5.1.1 KVM Console



To open the KVM console either click on the icon **Console** or **Remote Control > KVM Console** of the menu entry on the left or **Click to open** of the console picture on the right

#### 5.1.2 Telnet/SSHConsole

In general, the Telnet or SSH interface supports two operation modes: the **command** line mode and the **terminal** mode. The command line mode is used to control or display some parameters. In terminal mode the pass-through access to serial port is activated (if the serial settings were configured accordingly). All inputs are redirected to the device on serial port and its answers are displayed on the Telnet interface.

In order to log in with Telnet or SSH, you have to enable the access settings from **Device Settings > Network**.

### Network Miscellaneous Settings

Remote Console & HTTPS port  \*

HTTP port  \*

TELNET port  \*

SSH port  \*

Bandwidth Limit  kbit/s \*

☐ Enable TELNET access \*

☐ Enable SSH access \*

☐ Disable Setup Protocol \*

\* Stored value is equal to the default.

### 5.1.3 Remote Wakeup

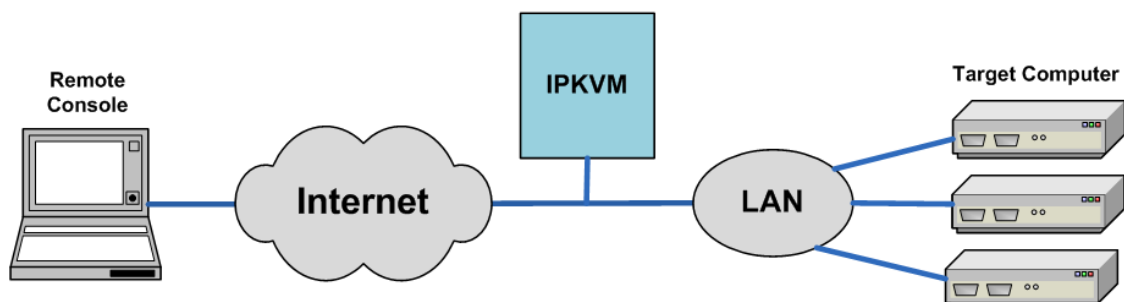
### Remote Wakeup Server List

	Wake Up	Server Description	Server IP	Server MAC
Server 1	<input type="checkbox"/>	Example	192.168.123.1	00:00:00:00:00:01

### Remote Wakeup Server Settings

	Server Description	Server IP	Server MAC
Server 1	<input type="text" value="Example"/>	<input type="text" value="192.168.123.1"/>	<input type="text" value="00:00:00:00:00:01"/>

The IKVM-17080 / IKVM-17160 provides the remote power wakeup function, which can remotely wake up the sleeping computer. With this feature, the computers that are not in use for now can be shut down and remotely wake up the computer when want to use it, and thus save the power energy.



### Settings on target computer:

In order to be waked up, some settings have to be done on the target computer:

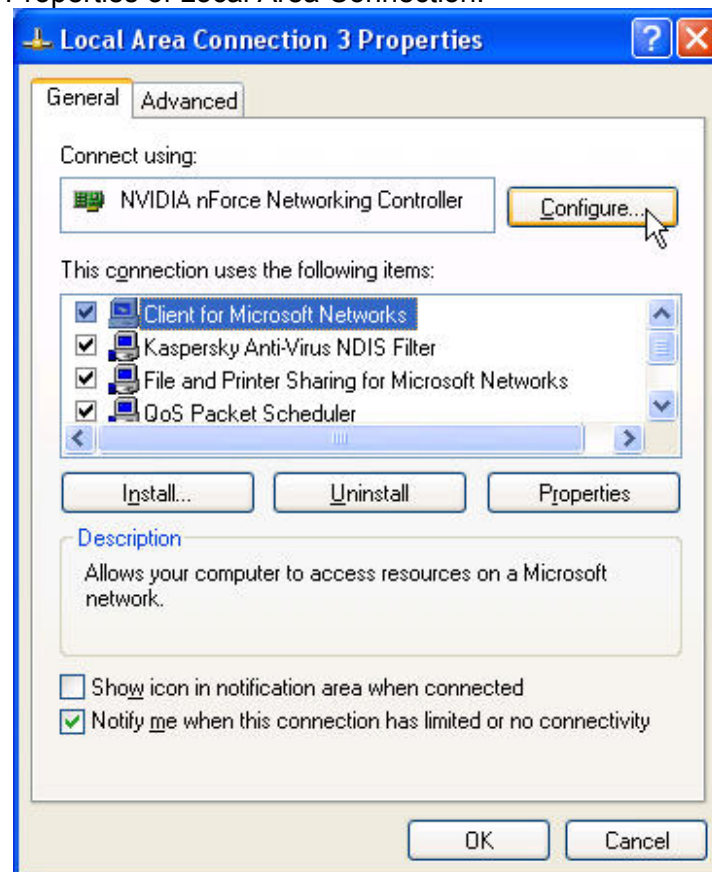
#### 1. BIOS setting:

Have the wake up function in BIOS **Enabled**

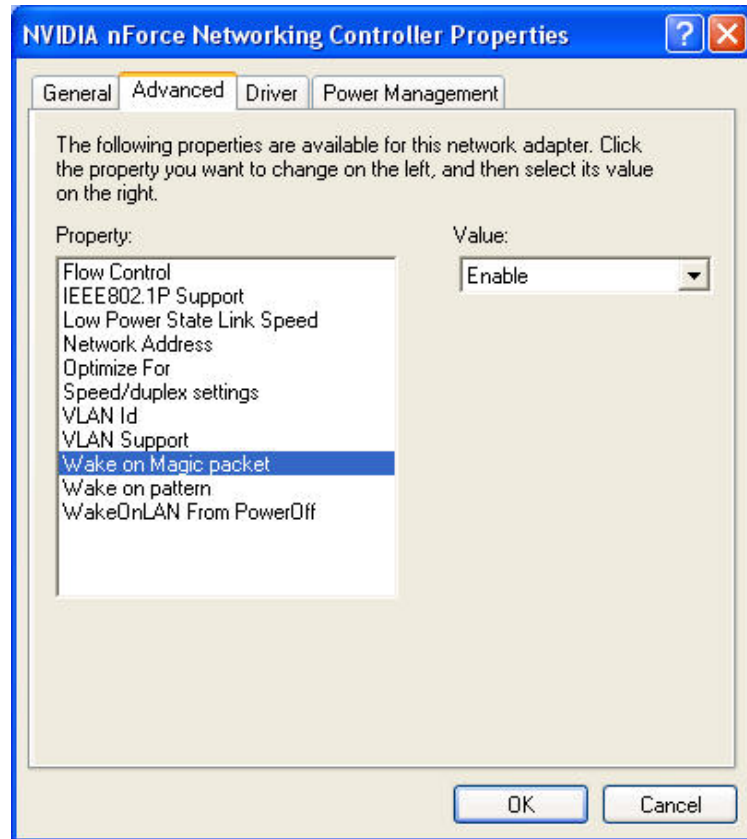
Note: the naming in BIOS varies depending on the BIOS type, it may be **Wake On LAN/PME**, **PME Event Wake Up**, or **Power On By PCI Device**.

#### 2. Windows Settings:

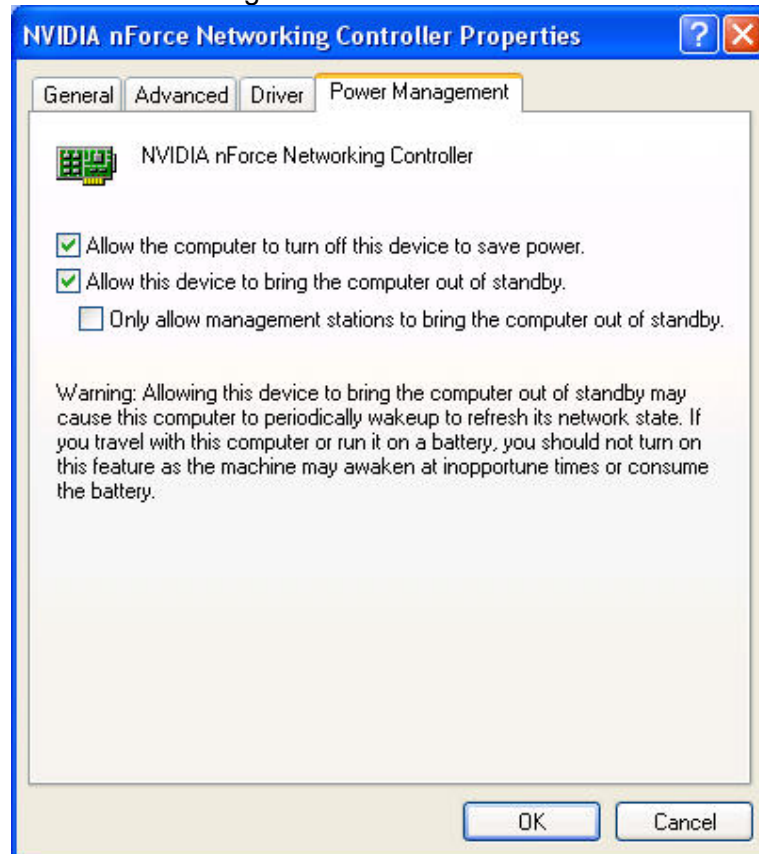
Enter the Properties of Local Area Connection.



Make sure Wake on Magic packet is **Enable**.



Make sure the following two items are selected.



### Settings on IP-KVM:

The control can be easily set up from the web page.

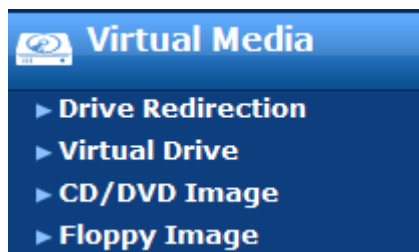
1. Click on **Remote Control > Remote Wakeup** to bring up the configuration page.
2. Click on **More entries** to add additional controlled target
3. Key in the server description and the server's IP address
4. Click on **Get MAC** to get the corresponding MAC address of the server
5. Click on **Apply** to save the entry

Click on **Reset to defaults** if want to clear all entries

## 5.2 Virtual Media

The IKVM-17080 / IKVM-17160 provide a powerful capability called Virtual Media (or Virtual Disk). Using the USB port, the IKVM-17080 / IKVM-17160 can present either a local floppy disk image or a redirected remote CD/DVD-ROM image to the target computer. This can allow system recovery in conditions as bad as having local disks down and no primary network connection. With Floppy Disk Image, the user can upload an image to the IP-KVM's memory, which then emulates a locally attached floppy drive. With CD/DVD-ROM Image, a Windows or other SAMBA share can emulate a locally attached CD/DVD-ROM, for instance to update software.

Drive Redirection allows you to share (redirect) your local drive (floppy drives, hard disks, CD ROMs and other removable devices like USB sticks) with the remote system over a TCP network connection. Thus, with Drive Redirection, you can use a virtual disk drive on the remote computer instead of an image file. It is also possible to enable a remote machine to write data to your local disc.



Before go ahead with this setup, both remote user computer and local computer (the one connected with the IKVM-17080 / IKVM-17160 unit) would have to have Operating System Win2000, XP or above. This function would not work on other platforms at this moment.

Before using Virtual Media, please connect the USB cable from IKVM-17080 / IKVM-17160 to host computer. After connecting the USB cable, you can see a "Removable Disk" on the host computer. Below is the host computer screen (the computer which connected with IKVM-17080 / IKVM-17160).

### 5.2.1 Drive Redirection

The Drive Redirection is another possibility to use a virtual disc drive on the remote computer. With Drive Redirection you do not have to use an image file but may work with a drive from your local computer on the remote machine. The drive is hereby shared over a TCP network connection. Devices such as floppy drives, hard discs,

CD-ROMs and other removable devices like USB sticks can be redirected. It is even possible to enable a write support so that for the remote machine it is possible to write data to your local disc.

**Active Image**

No disk emulation set.

**Drive Redirection**

Drive Redirection allows you to share your local drive (floppy, CD/DVD, removable disks and harddisks) with the remote system.

☐ Disable Drive Redirection \*

☒ Force read-only connections \*

Apply Reset to defaults

\* Stored value is equal to the default.

Please note that Drive Redirection works on a level which is far below the operating system. That means that neither the local nor the remote operating system is aware that the drive is currently redirected, actually. This may lead to inconsistent data as soon as one of the operating systems (either from the local machine, or from the remote host) is writing data on the device. If write support is enabled the remote computer might damage the data and the file system on the redirected device. On the other hand, if the local operating system writes data to the redirected device the drive cache of the operating system of the remote host might contain older data. This may confuse the remote host's operating system. We recommend to use the Drive Redirection with care, especially the write support.

### Disable Drive Redirection

To disable the function of Drive Redirection.

### Force read-only connections

If enabled the Write Support for the Drive Redirection is switched off. It is not possible to write on a redirected device.

Click **Apply** to submit your changes.

## 5.2.2 Virtual Drive

**Virtual Drive Options**

☐ Disable USB Mass Storage if no image is loaded \*

Apply Reset to defaults

\* Stored value is equal to the default.

Set this option to disable the mass storage emulation (and hide the virtual drive) if not mounting a image file or drive to the host system. To set this option, press the button “Apply”.

Note: If unset, and no file image will be found it may happen that the host system will hang on boot due to changes in the boot order, or the boot manager (LILO, GRUB). This case was reported for some Windows versions (2000, XP), other OS might not be fully excluded. This behavior depends on the BIOS version used in that machine.

### 5.2.3 CD/DVD Image

#### Use Image on Windows Share (via SAMBA)

To include an image from a Windows share, select “CD/DVD Image” from the submenu.

**Active Image**

**No disk emulation set.**

**Image on Windows Share**

This option allows you to share a CD/DVD image over a Windows Share.  
This image will be emulated to the host as USB device.

Share host

Share folder name

Image file name

User (optional)

Password (optional)

Set

System Setting	
<b>Share host</b>	The server name or its IP address (the PC that shares out the image file). On Windows 95, 98 and Windows ME do not specify the IP address but the server name ("NetBIOS Name").
<b>Share folder name</b>	The name of the share to be used
<b>Image file name</b>	The image file name on the share folder.
<b>User (optional)</b>	If necessary, specify the user name for the share named before. If unspecified and a guest account is activated, this guest account information will be used as your login.
<b>Password (optional)</b>	If necessary, specify the password for the given user name.



### Notes:

1. The output image extension file name has to be 'iso', e.g. CD-Rom\_vir.iso.
2. You may create an ISO image size up to 650Mb (for CD-ROM). This drive would be in read-only mode and would not allow you to write any information on this drive but copying only. This drive would be bootable under DOS mode if the motherboard / BIOS on the host computer support USB BOOTABLE function. For emulating DVD Drive, please use **Drive Redirection** function.
3. The above information has to be given from the point of view of IP-KVM with correct IP address and device name. Administrative permission is required as regular user may not have the right to access. Please login as a system administrator (or as "root" on UNIX systems).
4. The specified image file is supposed to be accessible from the IP-KVM. The information above has to be given from the point of view of the IP-KVM. It is important to specify correct IP addresses, and device names. Otherwise, IP-KVM may not be able to access the referenced image file properly; leave the given file unmounted and will display an according error message, instead. So, we recommend to state correct values and repeat this steps if necessary.

Furthermore, the specified share has to be configured correctly. Therefore, administrative permissions are required. As a regular user you may not have these permissions. You should either login as a system administrator (or as "root" on UNIX systems), or ask your system administrator for help to complete this task.

## 5.3 User Management

On an IP-KVM, each user name has settings and permissions associated with it. Settings affect how the user interfaces with the Remote Console. Permissions allow or forbid the user from performing various actions on the IP-KVM's web pages. A newly assigned user has permissions inherited from an assigned group, if any, or individual permissions if no group is assigned.



### 5.3.1 Change Password

**Change Password**

Old Password

New Password

Confirm New Password

Apply

- 1) Change password of currently logged in user:
- 2) Old Password: type in current password
- 3) New Password: type in new password
- 4) Confirm New Password: re-type new password for verification
- 5) Click "Apply" to submit your changes.

### 5.3.2 Users

**User Management**

Existing users

--- select ---

▼

Lookup

New user name

Full user name

Password

Confirm Password

Email address

Mobile number

Role

Administrator

▼

☐ Enforce user to change password on next login \*

Create

Modify

Delete

The IKVM-17080 / IKVM-17160 comes with 1 pre-configured user account that has fixed permissions. The account “super” has all possible rights to configure the device and to use all functions IP-KVM offers.

Upon delivery, the account “super” has the password “pass”. Make sure to change password immediately after you have installed and on initial access of your IP-KVM.

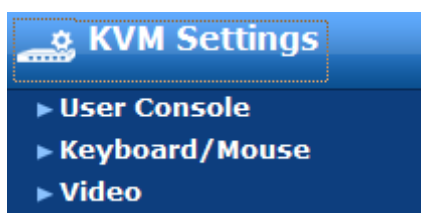
System Setting	
<b>New User name</b>	The new user name for the selected account.
<b>Password</b>	The password for the login name. It must be at least three characters long.
<b>Confirm password</b>	Confirmation of the password above.
<b>Email address</b>	This is optional.
<b>Mobile number</b>	This information may be optionally provided.

Select an existing user for modification. Once a user has been selected, click the lookup button to see the user information.

To create an user press the button **Create**. The **Modify** button changes the displayed user settings. To delete an user press the button **Delete**.

<b>Note:</b>	The IKVM-1708 /IKVM-1716 is equipped with an host-independent processor and memory unit which both have a limitation in terms of the processing instructions and memory space. To guarantee an acceptable response time we recommend not to exceed the number of 15 users connected to the IP-KVM at the same time. The memory space that is available onto the IP-KVM mainly depends on the configuration and the usage of the IP-KVM (log file entries etc.). That's why we recommend not to store more than 150 user profiles.
--------------	---

## 5.4 KVM Settings



### 5.4.1 User Console

The following settings are user specific. That means, the super user can customize these settings for every users separately. Changing the settings for one user does not affect the settings for the other users.

### Remote Console Settings for User

The settings on this page are user specific. Changes you make here will affect the selected user only.

super

Update

### Transmission Encoding

☒ Automatic Detection \*

☐ Pre-configured

Network speed LAN (high color) \*

☐ Manually

Compression 0 - none \*

Color depth 16 bit - high col \*

### Remote Console Type

☐ Default Java VM

☒ Sun Microsystems Java Browser Plugin \*

If you do not have the Java Browser Plugin already installed on your system, this option will cause downloading of around 11 MByte Plugin code. The Plugin will enable extended Remote Console functionality.

### Miscellaneous Remote Console Settings

☐ Start in Monitor Mode \*

☐ Start in Exclusive Access Mode \*

### Mouse Hotkey

Hotkey Alt+F12 \*

Used for fast mouse synchronization (in Double Mouse mode) and to free the grabbed mouse (in Single Mouse mode).

### Remote Console Button Keys

	Key Definition	Name
Button Key 1	confirm Ctrl+Alt+Delete *	*
<p>More entries</p>		

Apply

Reset to defaults

\* Stored value is equal to the default.

#### User select box

This selection box displays the user ID for which the values are shown and for which the changes will take effect. You may change the settings of other users if you have the required privileges.

### **Transmission Encoding**

The Transmission Encoding setting allows changing the image-encoding algorithm that is used to transmit the video data to the Remote Console window. It is possible to optimize the speed of the remote screen processing depending on the number of users working at the same time and the network bandwidth of the connection line (Modem, ISDN, DSL, LAN, etc.).

#### **Automatic detection**

The encoding and the compression level is determined automatically from the available bandwidth and the current content of the video image.

#### **Pre-configured**

The pre-configured settings deliver the best result because of optimized adjustment of compression and colour depth for the indicated network speed.

#### **Manually**

Allows to adjust both compression rate and the colour depth individually. Depending on the selected compression rate the data stream between the IP-KVM and the Remote Console will be compressed in order to save bandwidth. Since high compression rates consume more computing power of IP-KVM, they should not be used while several users are accessing the IP-KVM simultaneously.

The standard color depth is 16 Bit (65536 colors). The other color depths are intended for slower network connections in order to allow a faster transmission of data. Therefore compression level 0 (no compression) uses only 16 Bit color depth. At lower bandwidths only 4 Bit (16 colors) and 2 Bit (4 gray scales) are recommended for typical desktop interfaces. Photo-like pictures have best results with 4 Bit (16 gray scales). 1 Bit color depth (black/white) should only be used for extremely slow network connections.

### **Remote Console Type**

Specifies, which Remote Console Viewer to use.

#### **Default Java-VM**

Uses the default Java Virtual Machine of your Browser. This may be the Microsoft JVM for the Internet Explorer, or the Sun JVM if it is configured this way. Use of the Sun JVM may also be forced (see below).

#### **Sun Microsystems Java Browser Plugin**

Instructs the web browser of your administration system to use the JVM of Sun Microsystems. The JVM in the browser is used to run the code for the Remote Console window, which is actually a Java Applet. If you check this box for the first time on your administration system and the appropriate Java plug-in is not already installed on your system, it will be downloaded and installed automatically. However, in order to make the installation possible, you still need to answer the according dialogs with "yes". The download volume is around 11 Mbytes. The advantage of downloading Sun's JVM lays in providing a stable and identical Java Virtual Machine across different platforms. The Remote Console software is optimized for this JVM versions and offers wider range of functionality when run in SUN's JVM. Please make sure that you are installing Sun JVM v1.5 or above to your client system.

### **Miscellaneous Remote Console Settings**

#### **Start in Monitor Mode**

Sets the initial value for the monitor mode. By default the monitor mode is off. In case you switch it on, the Remote Console window will be started in a read only mode.

### Start in Exclusive Access Mode

Enables the exclusive access mode immediately at Remote Console startup. This forces the Remote Consoles of all other users to close. No one can open the Remote Console at the same time again until this user disables the exclusive access or logs off.

### Mouse hotkey

Allows to specify a hotkey combination which starts either the mouse synchronization process if pressed in the Remote Console, or is used to leave the single mouse mode.

### Remote Console Button Keys

Button Keys allow simulating keystrokes on the remote system that cannot be generated locally. The reason for this might be a missing key or the fact, that the local operating system of the Remote Console is unconditionally catching this keystroke already. Typical examples are “Control+Alt+Delete” on Windows and DOS, what is always caught, or “Control+Backspace” on Unix or Unix-like OS for terminating the X-Server. The syntax to define a new Button Key is as follows:

[confirm] <keycode>[+|-[\*]<keycode>]\*

“confirm” requests confirmation by a dialog box before the key strokes will be sent to the remote host.

“keycode” is the key to be sent. Multiple key codes can be concatenated with a plus, or a minus sign. The plus sign builds key combinations, all keys will be pressed until a minus sign or the end of the combination is encountered. In this case all pressed keys should be released in reversed sequence. The minus sign builds single, separate key presses and releases. The star inserts a pause with duration of 100 milliseconds.

## 5.4.2 Keyboard/Mouse

**Keyboard/Mouse Settings**

Keyboard Model

Generic 101/104-Key PC

\*

Key release timeout

☐ enabled

\*

Timeout after

25

msec

\*

Enable key release timeout if you experience duplicated keystrokes during poor network performance.

Mouse speed

☒ Auto

☐ Fixed scaling :

0.25

\*

☐ Absolute mouse scaling for MAC server

Apply

Reset to defaults

\* Stored value is equal to the default.

### PS/2 Keyboard Model

Enables a certain keyboard layout. You can choose between “Generic 101-Key PC” for a standard keyboard layout, “Generic 104-Key PC” for a standard keyboard layout extended by three additional windows keys, “Generic 106-Key PC” for a Japanese keyboard, and “Apple Macintosh” for the Apple Macintosh.

Keyboard timeout

Recommended as “enable” for keyboard timeout when host is UNIX or UNIX-like OS.

### Mouse Speed

#### Auto mouse speed

Use this option if the mouse settings on host use an additional acceleration setting. The IP-KVM tries to detect the acceleration and speed of the mouse during the mouse sync process.

#### Fixed mouse speed

Use a direct translation of mouse movements between the local and the remote pointer. You may also set a fixed scaling which determines the pixel-amount of the remote mouse pointer movement when the local mouse pointer is moved by one pixel. This option is used to manually control the remote mouse speed and only works when the mouse settings on the host are linear. This means mouse acceleration of OS should be disabled, and the intelligent mouse synchronization of IP-KVM is not functioning under this setting.

#### Absolute mouse scaling for MAC server

Use this option for MAC server. To set the options, click on the button **Apply**.

## 5.4.3 Video

**Miscellaneous Video Settings**

Noise filter small \*

☒ Force Composite Sync (Required for Sun Computers) \*

Apply Reset to defaults

\* Stored value is equal to the default.

### Miscellaneous Video Settings

#### Noise filter

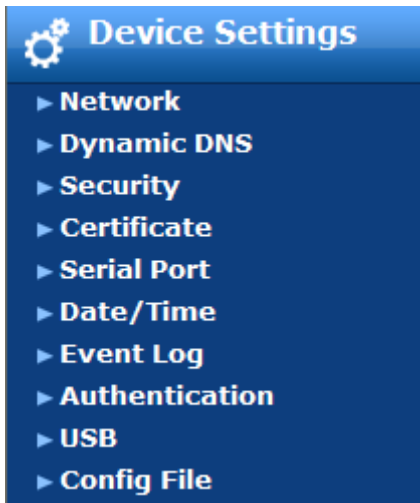
This option defines how the IP-KVM reacts to small changes in the video input signal. Turning on the noise filter can help reduce video flickering that is often caused by distortions, as well as lowering unnecessary bandwidth consumption. A large filter setting needs less network traffic and leads to a faster video display, but small changes in some display regions may not be recognized immediately. A small filter displays all changes instantly but may lead to a constant amount of network traffic even if the display content is not really changing (depending on the quality of the video input signal). All in all the default setting should be suitable for most situations.

#### Force Composite Sync (Required for Sun Computers)

When connecting the device directly to legacy Sun computer (with composite sync as the video output, it may be possible that IP-KVM don't recognize the composite sync automatically. To support signal transmission from a Sun machine, enable this option. If not enabled the picture of the remote console will not be visible.

To set the options, click on the button **Apply**.

## 5.5 Device Settings



### 5.5.1 Network

The Network Settings panel allows changing network related parameters. Each parameter will be explained below. Once applied the new network settings will immediately come into effect.

**Network Basic Settings**

IP auto configuration	None	*
Preferred host name (DHCP only)		*
IP address	10.1.1.222	
Subnet mask	255.255.255.0	*
Gateway IP address	10.1.1.1	
Primary DNS server IP address		*
Secondary DNS server IP address		*
Server Name	KVM Server	*



### Network Miscellaneous Settings

Remote Console & HTTPS port  \*

HTTP port  \*

TELNET port  \*

SSH port  \*

Bandwidth Limit  kbit/s \*

☐ Enable TELNET access \*

☐ Enable SSH access \*

☐ Disable Setup Protocol \*

\* Stored value is equal to the default.

**Note:** Changing the network settings of the IP-KVM might result in losing connection to it. In case you change the settings remotely make sure that all the values are correct and you still have an option to access the IP-KVM.

System Setting	
<b>IP auto configuration</b>	With this option you can control if the IP-KVM should fetch its network settings from a DHCP or BOOTP server. For DHCP, select "dhcp", and for BOOTP select "bootp" accordingly. If you choose "none" then IP auto configuration is disabled.
<b>Preferred host name</b>	Preferred host name to request from DHCP server. Whether the DHCP server takes the IP-KVM suggestion into account or not depends on the server configuration.
<b>IP address</b>	IP address in the usual dot notation.
<b>Subnet Mask</b>	The net mask of the local network.
<b>Gateway IP address</b>	In case the IP-KVM should be accessible from networks other than the local one, this IP address must be set to the local network router's IP address.
<b>Primary DNS Server IP Address</b>	IP address of the primary Domain Name Server in dot notation. This option may be left empty, however the IP-KVM will not be able to perform name resolution.
<b>Secondary DNS Server IP Address</b>	IP address of the secondary Domain Name Server in dot notation. It will be used in case the Primary DNS Server cannot be contacted.

<b>Remote Console And HTTPS port</b>	Port number at which the IP-KVM's Remote Console server and HTTPS server are listening. If left empty the default value will be used.
<b>HTTP port</b>	Port number at which the IP-KVM's HTTP server is listening. If left empty the default value will be used.
<b>Telnet port</b>	Port number at which the IP-KVM's Telnet server is listening. If left empty the default value will be used.
<b>SSH port</b>	Port number at which the IP-KVM SSH (Secure SHell) server is listening to. If left empty the default value (port 22) will be used.
<b>Bandwidth limitation</b>	The maximum network traffic generated through the IP-KVM ethernet device. Value in Kbit/s.
<b>Enable Telnet access</b>	This enables the Telnet function.
<b>Enable SSH access</b>	This enables the SSH (Secure SHell) function.
<b>Disable Setup Protocol</b>	Enable this option to exclude the IP-KVM from the setup protocol. Setup protocol is a proprietary layer-2 MAC-based protocol to allow some configuration software to detect IP-KVM devices in the network, even without IP address, and then config network related settings to IP-KVM.

### 5.5.2 Dynamic DNS

#### Dynamic DNS Settings

☐ Enable Dynamic DNS \*

Dynamic DNS server

DNS System Dynamic

Hostname (eg. yourhost.dyndns.com)

Username

Password

Check time (HH:MM)  \*

Check interval 24h \*

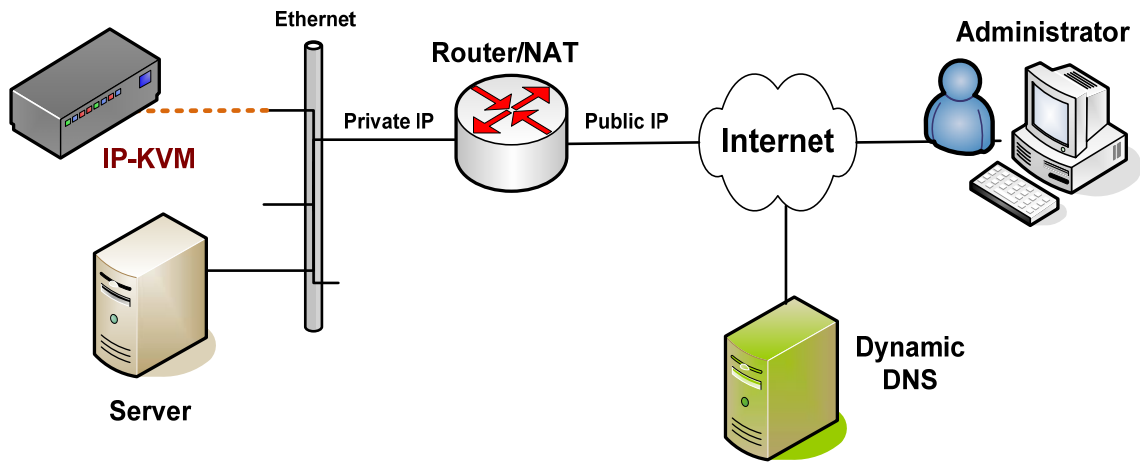
Delete saved external IP Delete

Apply Reset to defaults

\* Stored value is equal to the default.

A freely available Dynamic DNS service ([www.dyndns.org](http://www.dyndns.org)) can be used in the following

scenario.



The IP-KVM is reachable via the IP address of the DSL router, which is dynamically assigned by the provider. Since the administrator does not know the IP address assigned by the provider, the IP-KVM connects to a special dynamic DNS server in regular intervals and registers its IP address there. The administrator may contact this server as well and pick up the same IP address relating to his IP-KVM unit.

The administrator has to register an IP-KVM that is supposed to take part in the service with the Dynamic DNS Server and assign a certain hostname to it. He will get a nickname and a password in return to the registration process. This account information together with the hostname is needed in order to determine the IP address of the registered IP-KVM.

You have to perform the following steps in order to enable Dynamic DNS:

- Make sure that the LAN interface of the IP-KVM is properly configured.
- Enter the Dynamic DNS Settings configuration dialog as shown in Figure.
- Enable Dynamic DNS and change the settings according to your needs (see below).

### **Enable Dynamic DNS**

This enables the Dynamic DNS service. This requires a configured DNS server IP address.

### **Dynamic DNS server**

This is the server name where IP-KVM registers itself in regular intervals. Currently, this is a fixed setting since only dyndns.org is supported for now.

### **DNS System**

Choose Dynamic for free DNS service. Custom for your own domain.

### **Hostname**

This is the hostname of the IP-KVM that is provided by the Dynamic DNS Server. (use the whole name including the domain, e.g. testserver.dyndns.org , not just the actual hostname).

### **Username**

You have registered this username during your manual registration with the Dynamic DNS Server. Spaces are not allowed in the Nickname.

## Password

You have used this password during your manual registration with the Dynamic DNS Server.

## Check time

The IP-KVM registers itself for initiating the IP address of IP-KVM stored in the Dynamic DNS server at this time.

## Check interval

This is the interval for reporting again to the Dynamic DNS server for updating the IP address associated with the Domain Name of the IP-KVM.

<b>Note:</b>	The IP-KVM has its own independent real time clock. Make sure the time setting of the IP-KVM is correct. (see the Section Date And Time )
--------------	---

## 5.5.3 Security

**HTTP Encryption**  
☐ Force HTTPS for Web access \*

**KVM Encryption**  
KVM Encryption ☒ Off \* ☐ Try ☐ Force

**Group based System Access Control**  

Please note: 'Apply' is required, or changes will be lost.

☐ Enable Group based System Access Control \*  
Default Action  \*

Rule #	Starting IP	Ending IP	Group	Action
1	0.0.0.0	255.255.255.255	All	ACCEPT
<input type="text"/>	<input type="text"/>	<input type="text"/>	<input type="text" value="super"/>	<input type="text" value="ACCEPT"/>

\* Stored value is equal to the default.

## Force HTTPS

If this option is enabled access to the web front-end is only possible using an HTTPS connection. The IP-KVM will not listen on the HTTP port for incoming connections.

In case you want to create your own SSL certificate that is used to identify the IP-KVM refer to the Section called *Certificate*.

## KVM encryption

This option controls the encryption of the RFB protocol. RFB is used by the Remote Console to transmit both the screen data to the administrator machine and keyboard and mouse data back to the host. If set to "Off" no encryption will be used. If set to "Try" the applet tries to make an encrypted connection. In case connection establishment fails for any reason an unencrypted connection will be used.

If set to “Force” the applet tries to make an encrypted connection with certificate. An error will be reported in case connection establishment fails.

### Group-based System Access Control

This is the IP filtering function, it keeps unauthorized hosts from accessing to the IP-KVM by specifying IP filtering rules. It is important to fully understand what an IP filter is. If you don't fully understand this, you will get unexpected results against your original plan.

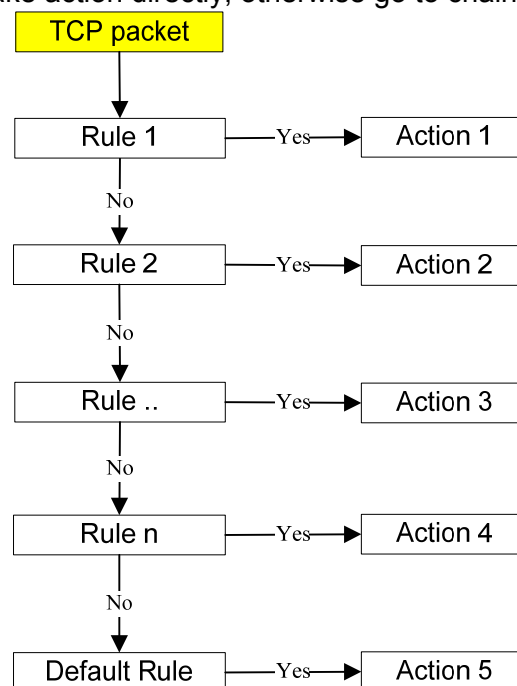
### Chain rule

The **Chain rule** determines whether the access from the hosts is allowed or not. It can be one of these two values:

- ACCEPT : access allowed
- DROP : access not allowed

The rule can be configured to apply to a particular Group level (All, User, Super, Administrator).

When the IP-KVM receives a TCP packet, it will process the packet with the chain rule depicted below. The process ordering is important; The packet will enter the chain rule 1 first, if meet the rule then take action directly, otherwise go to chain rule 2.



Check the “Enable Group based System Access Control” to edit the rules

Users can add a new IP filtering rule by setting the properties at adding line by **Append** or **Insert**. User can remove a rule by **Remove** or **Delete**

**Group based System Access Control**

Please note: 'Apply' is required, or changes will be lost.

☒ Enable Group based System Access Control \*

Default Action **ACCEPT** \*

Rule #	Starting IP	Ending IP	Group	Action
1	0.0.0.0	255.255.255.255	All	ACCEPT
	192.168.123.199	192.168.123.230	super	ACCEPT

Append Insert Replace Delete

Apply Reset to defaults

\* Stored value is equal to the default.

#### 5.5.4 Certificate

**Certificate Signing Request (CSR)**

Common name

Organizational unit

Organization

Locality/City

State/Province

Country (ISO code)

Email

Challenge password

Confirm Challenge password

Key length (bits) **1024** \*

Create

\* Stored value is equal to the default.

The IP-KVM uses the Secure Socket Layer (SSL) protocol for any encrypted network traffic between itself and a connected client. During the connection establishment the IP-KVM has to expose its identity to a client using a cryptographic certificate. The default certificate comes with IP-KVM device upon delivery is for testing purpose only. System administrator should not rely on this default certificate as the secured global access mechanism through Internet.

However, it is possible to generate and install a new base64 X.509 certificate that is unique for a particular IP-KVM. In order to do that, the IP-KVM is able to generate a new cryptographic key and the associated Certificate Signing Request (CSR) that needs to be certified by a certification authority (CA). A certification authority verifies that you are the person who you claim you are, and signs and issues a SSL certificate to you.

### 5.5.5 Serial Port

**Serial Port Settings**

☒ Configuration login \*

☐ Modem

Serial line speed  bits/s \*

Modem init string  \*

Modem server IP address  \*

Modem client IP address  \*

☐ Passthrough access to serial port 1 via Telnet/SSH

Speed	Data bits	Parity	Stop Bits	Handshake
<input type="text" value="115200"/>	<input type="text" value="8"/>	<input type="text" value="none"/>	<input type="text" value="1"/>	<input type="text" value="None"/>

Serial Port Log

Key Word 1

The IP-KVM Serial Settings allows you to specify what device is connected to the serial port and how to use it.

### 5.5.6 Date / Time

**Date/Time Settings**

UTC Offset  \*

☒ User specified time \*

Date  /  /  (mm/dd/yyyy)

Time  :  :  (hh:mm:ss)

☐ Synchronize with NTP Server

Primary Time server

Secondary Time server

\* Stored value is equal to the default.

This link refers to a page, where the internal real-time clock of the IP-KVM can be set up. You have the possibility to adjust the clock manually, or to use a NTP timeserver. Without a timeserver, your time setting will not be persistent, so you have to adjust it again, after IP-KVM loses power for more than a few minutes. To avoid this, you can use a NTP timeserver, which sets up the internal clock automatically to the current UTC

time. Because NTP server time is always UTC, there is a setting that allows you to set up a static offset to get your local time.

**Note:** There is currently no way to adjust the daylight saving time automatically. So you have to set up the UTC offset twice a year properly to the local rules of your country..

### 5.5.7 Event Log

#### Event Log Targets

☒ List Logging Enabled \*  
Entries shown per page  \*  
Clear internal log

☒ NFS Logging Enabled \*  
NFS Server  \*  
NFS Share  \*  
NFS Log File  \*

☐ SMTP Logging Enabled \*  
SMTP Server  \*  
Receiver Email Address  \*  
Sender Email Address  \*

☐ SNMP Logging Enabled \*  
Destination IP  \*

☐ SNMP Logging Enabled \*  
Destination IP  \*  
Community  \*

#### Event Log Assignments

Event	List	NFS
Board Message	<input checked="" type="checkbox"/> *	<input checked="" type="checkbox"/> *
Security	<input checked="" type="checkbox"/> *	<input checked="" type="checkbox"/> *
Remote Console	<input checked="" type="checkbox"/> *	<input checked="" type="checkbox"/> *
Host Control	<input checked="" type="checkbox"/> *	<input checked="" type="checkbox"/> *
Authentication	<input checked="" type="checkbox"/> *	<input checked="" type="checkbox"/> *
Serial Port	<input checked="" type="checkbox"/> *	<input checked="" type="checkbox"/> *

\* Stored value is equal to the default.



Important events like a login failure or a firmware update are logged to a selection of logging destinations. Each of those events belongs to an event group, which can be activated separately.

The common way to log events is to use the internal log list of the IP-KVM. To show the log list, click on "Event Log" on the "Maintenance" page. In the Event Log Settings you can choose how many log entries are shown on each page. Furthermore, you can clear the log file here.

### 5.5.8 Authentication

#### Authentication Settings

☒ Local Authentication \*
   
☐ LDAP

User LDAP Server  \*
   
 Base DN of User LDAP Server  \*
   
 Type of external LDAP Server  \*
   
 Name of login-name attribute  \*
   
 Name of user-entry objectclass  \*
   
 User search subfilter  \*
   
 Active Directory Domain  \*

☐ RADIUS

	Server	Shared Secret	Auth. Port	Acc. Port	Timeout	Retries
1.	<input type="text"/>	<input type="text"/>	<input type="text" value="1812"/> *	<input type="text" value="1813"/> *	<input type="text" value="1"/> *	<input type="text" value="3"/> *

More Entries

On this screen you can specify where the IP-KVM will look in order to authenticate the users. You can use "Local Authentication", this means you need to have created the user account on the IP-KVM and the user/group information residing on the IP-KVM for authentication.

The other options allow you to specify an LDAP or a RADIUS Server to use for the login authentication. These methods are very useful when you want to map users into specific groups which have certain privileges. It is usually far easier and simpler to refer to already existing groups, rather than having to re-enter everything into the IP-KVM.

<b>Note:</b>	Whatever you configure, you can always login over the network as the superuser "super". The superuser is always authenticated and authorized locally, so you always have a "back door" to the IP-KVM.
--------------	---

### 5.5.9 USB

**USB Device Settings**  
☐ Force using USB 1.1 \*  

USB 2.0 is the default setting, if the operating system of the managed computer does not support USB 2.0, please force it to USB 1.1.

Apply    Reset to defaults

\* Stored value is equal to the default.

USB 2.0 is the default setting, if the operating system of the managed computer does not support USB 2.0, please force it to USB 1.1.

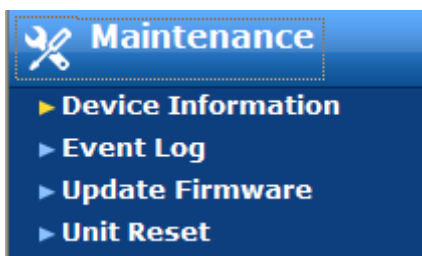
### 5.5.10 Config File

**Device Configuration**  
Configuration Restore  瀏覽...    Restore  
Configuration Backup    Backup

With this function, the configuration settings can be saved (Backup) in a file (config.gz), or reloaded (Restore) from a previously saved configuration file.

## 5.6 Maintenance

The administrator performs various maintenance activities on the IP-KVM. These include viewing its status, update firmware, view the event log and reset the unit



### 5.6.1 Device Information

The Device Status page contains a table with information about the IP-KVM's hardware and firmware. This information is useful if technical support is required.

### Device Information

**Product Name:** IP-KVM  
**Server Name:** KVM Server  
**Serial Number:** 08051111150053  
**Board ID:** 0a33a201e84968fb  
**Device IP Address:** 10.1.1.222  
**Device MAC Address:** 00:30:4F:00:49:08  
**Firmware Version:** 04.30.06  
**Firmware Build Number:** 49097  
**Firmware Description:** 2011-12-07 22:53 IPKM03STD  
**Hardware Revision:** 0x15

### Connected Users

super (10.1.1.169) active

The Data file for support allows you to download the IP-KVM data file with specific support information. This is an XML file with certain customized support information like the serial number etc. You may send us this information together with a support request. It will help us to locate and solve your reported problem.

## 5.6.2 Even log

The figure below displays the log list including the events that are logged by the IP-KVM

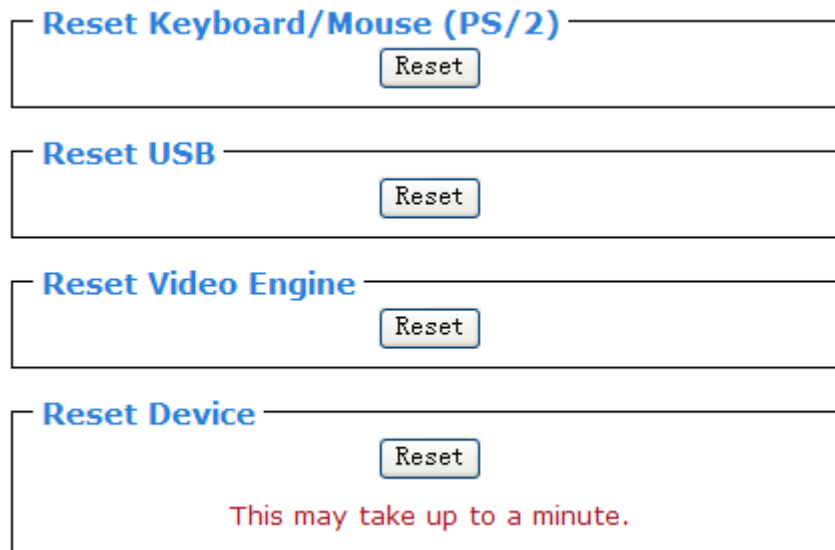
### Event Log

[ Prev ][      ]			
Date	Event	Description	
01/06/2000 01:27:09	Authentication	User 'super' logged in from IP address 10.1.1.169	
01/05/2000 23:43:45	Authentication	User 'super' logged in from IP address 10.1.1.169	
01/05/2000 22:34:16	Authentication	User 'super' logged in from IP address 10.1.1.169	
01/05/2000 07:07:40	Authentication	User 'super' logged in from IP address 10.1.1.169	
01/05/2000 03:44:19	Authentication	User 'super' logged in from IP address 10.1.1.169	
01/05/2000 03:23:37	Authentication	User 'super' logged in from IP address 10.1.1.169	
01/04/2000 06:34:28	Authentication	User 'super' logged in from IP address 10.1.1.169	
01/04/2000 06:08:00	Authentication	User 'super' logged in from IP address 10.1.1.169	
01/04/2000 05:30:50	Authentication	User 'super' logged in from IP address 10.1.1.169	
01/04/2000 05:02:48	Remote Console	Connection to client 10.1.1.169 closed.	
01/04/2000 05:02:48	Remote Console	Connection to client 10.1.1.169 established.	
01/04/2000 05:00:31	Remote Console	Connection to client 10.1.1.169 closed.	
01/04/2000 05:00:20	Remote Console	Connection to client 10.1.1.169 established.	
01/04/2000 04:59:55	Remote Console	Connection to client 10.1.1.169 closed.	
01/04/2000 04:55:50	Remote Console	Connection to client 10.1.1.169 established.	
01/04/2000 04:55:10	Authentication	User 'super' logged in from IP address 10.1.1.169	

### 5.6.3 Unit Reset

This section allows you to reset specific parts of the device. This involves resetting keyboard/mouse, USB, video engine, or the IP-KVM device itself. In general, the IP-KVM requires a reset when implementing a firmware update. In the event of an abnormal operation, a number of subsystems may be reset without resetting the entire IP-KVM.

Click **Maintenance > Unit Reset**, the following window displays.



The screenshot shows a web interface for unit reset. It contains four distinct sections, each with a title and a 'Reset' button:

- Reset Keyboard/Mouse (PS/2)**: A button labeled 'Reset'.
- Reset USB**: A button labeled 'Reset'.
- Reset Video Engine**: A button labeled 'Reset'.
- Reset Device**: A button labeled 'Reset' and a red warning message below it: 'This may take up to a minute.'

To reset a certain IP-KVM functionality click on the **Reset** button as displayed in figure below.

Clicking on **Reset** of **Reset Device** will reboot the IP-KVM system. It will close all current connections to the administration console and to the Remote Console. The whole process will take about one minute. Resetting subdevices (e.g. video engine) will take few seconds only and does not result in closing connections.

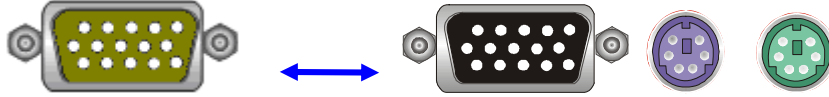
**Note:** Only the **super** user is allowed to reset the IP-KVM.

## Appendix A Cable Connectors Specifications

### Cable Connectors

#### 1. 3-in-1 VGA Cable

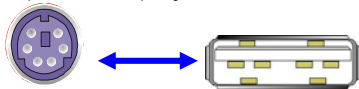
HDDB15 male to one HDDB15 male plus two minis din 6-pin PS/2 connectors.



3-in-1 VGA Cable Connectors

#### 2. PS/2 keyboard to USB Changer

PS/2 (keyboard) to USB (keyboard and mouse) changer.



PS/2 keyboard to USB Changer

#### 3. Daisy Chain Cable

VGA Cable: HDDB15 Male to Male



Daisy Chain Cable

<b>Note:</b>	Daisy chain needs the cable 15 lines fully connected. This is a special VGA cable, normal VGA cable have unconnected lines. Please contract your dealer for Daisy chain cable.
--------------	--

## Appendix B Troubleshooting & Frequently Asked Questions

Question	Answer
The remote mouse doesn't work or is not synchronous	Make sure the mouse settings in IKVM-17080 / IKVM-17160 match the mouse model. There are some circumstances where the mouse synchronization process could behave incorrectly, refer to Section 3.4.3 for further explanation.
The video quality is bad or the picture is grainy	Try to correct the brightness and contrast settings (see section 4.3.1) until they are out of a range where the picture looks grainy. Use the auto adjustment feature to correct a flickering video.
Login on IKVM-17080 / IKVM-17160 fails.	Was the correct combination of user and password given? On delivery, the user "super" has the password "pass". Moreover your browser must be configured to accept cookies.
The Remote Console window can't connect to IKVM-17080 / IKVM-17160.	Possibly a firewall prevents access to the Remote Console. Make sure the TCP port numbers 443 or 80 are open for incoming TCP connection establishments.
No connection can be established to IKVM-17080 / IKVM-17160.	Check whether the network connection is working in general (ping the IP address of IKVM-17080 / IKVM-17160). If not, check network hardware. Is IKVM-17080 powered on? Check whether the IP address of IKVM-17080 / IKVM-17160 and all other IP related settings are correct! Also verify that all the IP infrastructure of your LAN, like routers etc., is correctly configured. Without a ping functioning, IKVM-17080 / IKVM-17160 can't work either.
Special key combinations, e.g. ALT+F2, ALT+F3 are intercepted by the console system and not transmitted to the host.	You have to define a so-called 'Button Key'. This can be done in the Remote Console settings.
In the browser the IKVM-17080 / IKVM-17160 pages are inconsistent or chaotic.	Make sure your browser cache settings are feasible. Especially make sure the cache settings are not set to something like "never check for newer pages". Otherwise IKVM-17080 / IKVM-17160 pages may be loaded from your browser cache and not from the card.
Windows XP doesn't awake from standby mode	This is possibly a Windows XP problem. Try not to move the mouse while XP goes in standby mode.
Can't upload the signed certificate in MacOS X	If an 'internal error' occurs while uploading the signed certificate, either change the extension of the file to .txt or add a file helper using the Internet Explorer preferences for this type of file. Make sure that the encoding is plain text and the checkbox 'use for outgoing' is checked. Another possibility is to use a Mozilla based browser.
Every time I open a dialog box with some buttons the mouse pointers are not synchronous anymore	Please check, if you have an option like "Automatically move mouse pointer to the default button of dialog boxes" enabled in the mouse settings of the operating system. This option needs to be disabled.