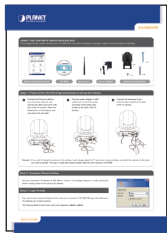


**VERIFY THE CONTENTS INSIDE PACKAGE BOX**

The package should contain the items plus ICA-HM227W. If any item is missing or damaged, please contact the seller immediately.



Quick Installation Guide



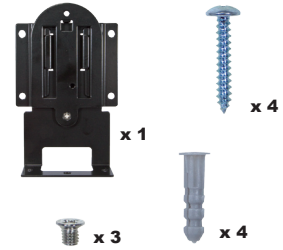
CD-ROM



Antenna x 1



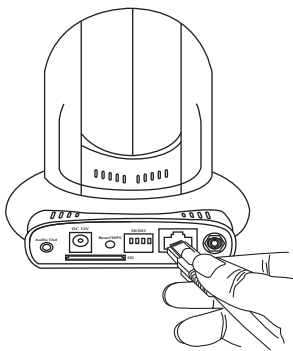
Power Adapter



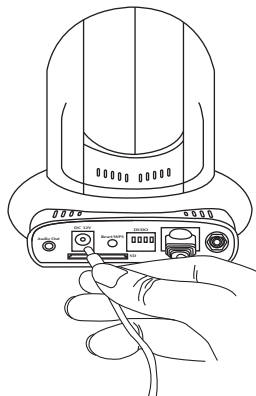
Camera Mounting Kit

**Step 1 : Please follow the following instructions to set up the camera**

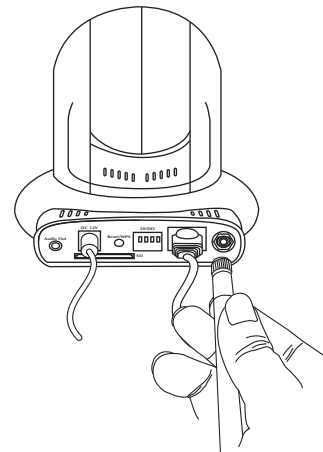
- 1 Connect the Ethernet cable to your local area network, and connect the other end to the LAN jack of this IP camera.



- 2 Plug the power adapter to wall socket and connect the power connector to the power jack located at the back of the IP camera.



- 3 Connect the antennas to the antenna base located at the back of the IP camera.



**Remark :** If you wish to hang the camera on the ceiling or wall, please place the IP camera at a secured place, and point the camera to the place you wish to monitor. The way to install this camera please refer the user manual in CD-ROM.

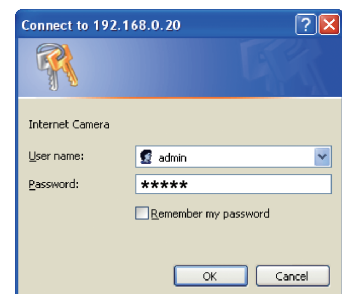
**Step 2 : Computer Network Setup**

Set your computer's IP address to 192.168.0.x, where x is an integer between 1 to 254 (except 20 where is being used for the camera by default).

**Step 3 : Login Prompt**

Use web browser (Internet Explorer 6.0 or above) to connect to 192.168.0.20 (type this address in the address bar of web browser).

You'll be prompted to input user name and password: **admin / admin**



### Step 4 : Install ActiveX Control

After logged on, you should see the following messages appear at the top of Internet Explorer, click on the message, and click **'Install This Add-on for All Users On This Computer...'**



When you see this message, click **'Install'** to install required ActiveX control.



After the ActiveX control was installed, the first image will be displayed. You should be able to see the images captured from the camera in the web page now. For advanced configuration and setting such as P/T tour, wireless connection, please refer to instructions given in the CD-ROM user guide.

### Step 5 : [Option] Wireless Connection

You also can use the wireless function to connect the camera with the Wi-Fi AP. Go to the wireless configure page and click the **"Available Network"** button, the wireless site survey page will displayed. Click the **"Choose"** button to connect the wireless AP. Then click **"Apply"** button to save the configuration.

WNRT-617	00:30:4f:5f:e8:3b	6	NONE	1	Infrastructure	NO	<b>Choose</b>
ADN-4100	00:30:4f:36:a8:1e	11	WEP	1	Infrastructure	NO	Choose
VRT-420N	00:30:4f:09:1d:5e	11	WPA2PSK/TKIPAES	2	Infrastructure	YES	Choose
WNRT-632	00:30:4f:01:fc:dc	11	WEP	1	Infrastructure	NO	Choose

After save the configuration, reboot the camera and unplugged the RJ-45 cable, then the wireless connection will be established. For advanced configuration and setting such as P/T tour, wireless connection, please refer to instructions given in the CD-ROM user guide.

### Further Configuration

For detail configuration, please check user's manual on the bundled CD.

If you have any other questions, please contact the dealer where you purchased this product or you can contact PLANET di-rectly at the following email address: [support@planet.com.tw](mailto:support@planet.com.tw)