

2.4G&5G
WDRT-730

300Mbps Dual Band 802.11n Wireless Gigabit Router

Quick Installation Guide



1. Package Contents

Thank you for choosing PLANET WDRT-730. Before installing the router, please verify the contents inside the package box.

Wireless Router

Quick Guide

CD-ROM



Power Adapter

Ethernet Cable

Stand

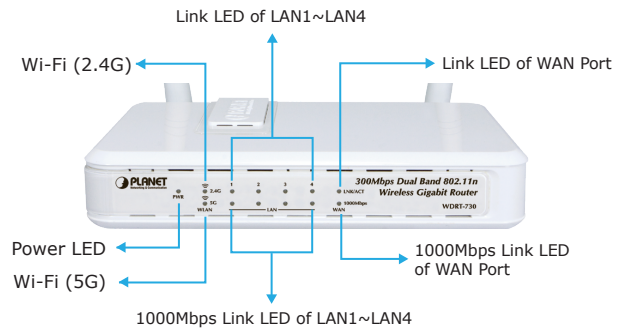


If there is any item missed or damaged, please contact the seller immediately.

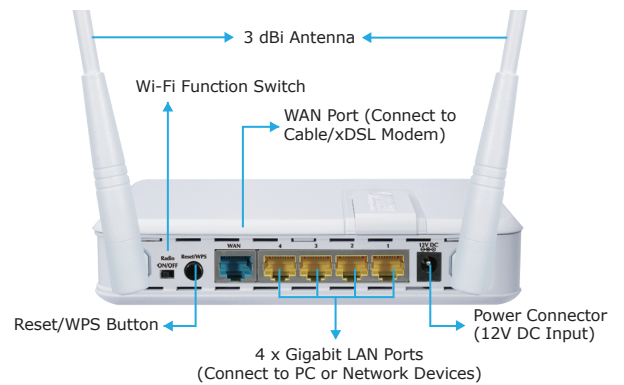
- 1 -

2. Physical Introduction

Front Panel Description



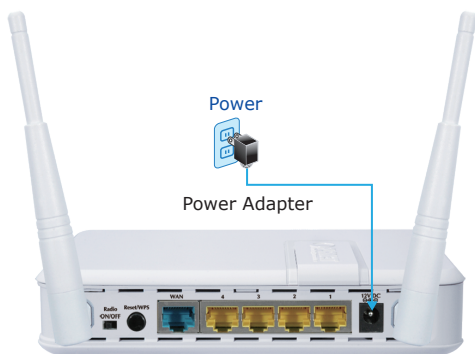
Rear Panel Description



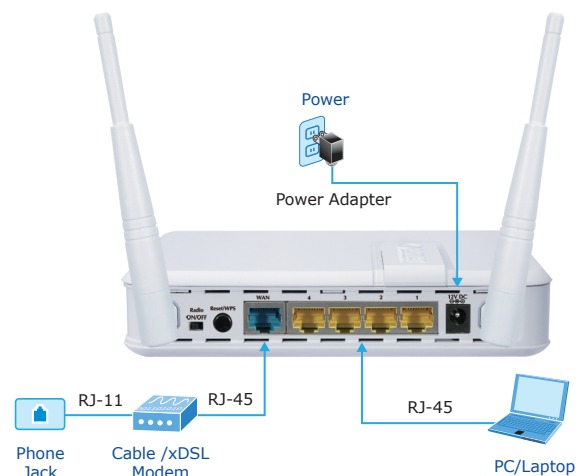
- 2 -

3. Hardware Installation

STEP 1: Connect the Power Adapter provided in the package to the WDRT-730. The Power LED on the front panel shall turn on accordingly.



STEP 2: Follow the figure below to connect with the network devices. It depends on your network environment to connect the WAN port to a Cable/xDSL modem, or the Ethernet directly in your place.



- 3 -

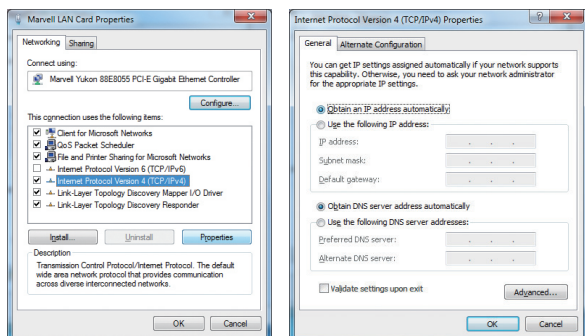
- 4 -

4. Network Configuration (Windows 7)

A computer with a wired Ethernet connection is required for the first-time configuration of the Wireless Router.

Set your computer to get an IP address from the Wireless Router:

1. Click **"Start"** button located at lower-left corner of the screen.
2. Click **"Control Panel"**.
3. Double click **"Network and Sharing Center"** icon.
4. Click **"Change adapter settings"**.
5. Double click **"Local Area Connection"** icon.
6. Select **"Internal Protocol Version 4 (TCP/IPv4)"** and click **"Properties"** button.
7. Select **"Obtain an IP address automatically"** and **"Obtain DNS server address automatically"**, then click **"OK"** button twice to save the configuration.

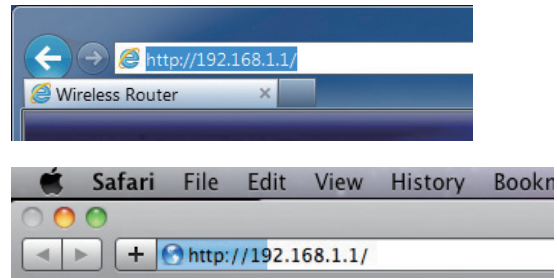


- 5 -

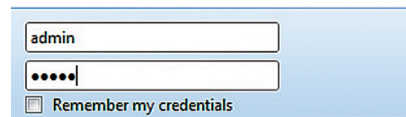
5. Enter into the Web Management

Default IP Address: **192.168.1.1**
Default User name: **admin**
Default Password: **admin**
Default SSID of 2.4G: **default_2.4G**
Default SSID of 5G: **default_5G**
Default Wireless Encryption Type: **None**

STEP 1: The Web management allows you to access and manage the WDRT-730 easily. Launch the Web browser and enter the default IP address **http://192.168.1.1**



The default User name and Password are both **"admin"**. Then click OK button to continue.



- 6 -

STEP 2: When you enter into the Web User Interface, click **Quick Setup** button at the left hand side of the screen.



STEP 3: Once the corresponding Internet connection type is chosen, click **OK** button to save and make the changes take effect.



- 7 -

6. Wireless Network Connection

STEP 1: Right-Click on the **network icon** displayed in the system tray.



STEP 2: Highlight the wireless network (SSID) you want to connect and click **Connect** button.

STEP 3: Enter the **encryption key** of WDRT-730 if necessary.



You have already finished the configuration of the WDRT-730. Now you can use your iPhone, iPad, laptop, and any other Wi-Fi devices to connect with it wirelessly and start surfing the Internet.

FURTHER INFORMATION:

The above steps introduce simple installations and configurations for WDRT-730. For further configurations of Wireless Dual Band, WAN, LAN, Firewall, Virtual Server, DMZ, and DDNS etc, please refer to the user manual in the CD-ROM. If you have further questions, please contact the local dealer or distributor where you purchased this product.

2011-E50270-000

- 8 -