

# User's Manual

## Full HD 20M IR Vari-Focal Dome IP Camera

► ICA-4200V



---

**Copyright**

Copyright © 2013 by PLANET Technology Corp. All rights reserved. No part of this publication may be reproduced, transmitted, transcribed, stored in a retrieval system, or translated into any language or computer language, in any form or by any means, electronic, mechanical, magnetic, optical, chemical, manual or otherwise, without the prior written permission of PLANET.

PLANET makes no representations or warranties, either expressed or implied, with respect to the contents hereof and specifically disclaims any warranties, merchantability or fitness for any particular purpose. Any software described in this manual is sold or licensed "as is". Should the programs prove defective following their purchase, the buyer (and not PLANET, its distributor, or its dealer) assumes the entire cost of all necessary servicing, repair, and any incidental or consequential damages resulting from any defect in the software. Further, PLANET reserves the right to revise this publication and to make changes from time to time in the contents hereof without obligation to notify any person of such revision or changes.

All brand and product names mentioned in this manual are trademarks and/or registered trademarks of their respective holders.

**Federal Communication Commission Interference Statement**

This equipment has been tested and found to comply with the limits for a Class B digital device, pursuant to Part 15 of FCC Rules. These limits are designed to provide reasonable protection against harmful interference in a residential installation. This equipment generates, uses, and can radiate radio frequency energy and, if not installed and used in accordance with the instructions, may cause harmful interference to radio communications. However, there is no guarantee that interference will not occur in a particular installation. If this equipment does cause harmful interference to radio or television reception, which can be determined by turning the equipment off and on, the user is encouraged to try to correct the interference by one or more of the following measures:

1. Reorient or relocate the receiving antenna.
2. Increase the separation between the equipment and receiver.
3. Connect the equipment into an outlet on a circuit different from that to which the receiver is connected.
4. Consult the dealer or an experienced radio technician for help.

**FCC Caution**

To assure continued compliance. (example-use only shielded interface cables when connecting to computer or peripheral devices). Any changes or modifications not expressly approved by the party responsible for compliance could void the user's authority to operate the equipment.

This device complies with Part 15 of the FCC Rules. Operation is subject to the Following two conditions: ( 1 ) This device may not cause harmful interference, and ( 2 ) this Device must accept any interference received, including interference that may cause undesired operation.

**Federal Communication Commission (FCC) Radiation Exposure Statement**

This equipment complies with FCC radiation exposure set forth for an uncontrolled environment. In order to avoid the possibility of exceeding the FCC radio frequency exposure limits, human proximity to the antenna shall not be less than 20 cm (8 inches) during normal operation.

---

**Safety**

This equipment is designed with the utmost care for the safety of those who install and use it. However, special attention must be paid to the dangers of electric shock and static electricity when working with electrical equipment. All guidelines of this and of the computer manufacture must therefore be allowed at all times to ensure the safe use of the equipment.

**CE Mark Warning**

This is a Class B product. In a domestic environment, this product may cause radio interference, in which case the user may be required to take adequate measures.

**WEEE Regulation**

To avoid the potential effects on the environment and human health as a result of the presence of hazardous substances in electrical and electronic equipment, end users of electrical and electronic equipment should understand the meaning of the crossed-out wheeled bin symbol. Do not dispose of WEEE as unsorted municipal waste and have to collect such WEEE separately.

**Revision**

User's Manual for PLANET Full HD 20M IR Vari-Focal Dome IP Camera  
Model: ICA-4200V  
Rev: 1.00 (February.2013)  
Part No. EM-ICA4200V

## Table of Content

Chapter 1. Product Introduction .....	6
1.1. Package Contents .....	6
1.2. Overview .....	6
1.3. Features .....	9
1.4. Product Specification .....	10
Chapter 2. Hardware Interface .....	12
2.1 Physical Description .....	12
2.1.1 Identification of ICA-4200V physical detail .....	12
2.1.2 I/O Control Instruction .....	13
2.1.3 Connector board .....	15
2.2 Hardware Installation .....	17
2.3 Initial Utility Installation .....	20
2.4 Preparation .....	22
2.4.1 Search and View by PLANET IP Wizard II .....	22
2.4.2 Configure Network by PLANET IP Wizard II .....	24
2.5 Using UPnP of Windows XP or 7 .....	25
2.5.1 Windows XP .....	25
2.5.2 Windows 7 .....	30
2.6 Setup ActiveX to use the Internet Camera .....	31
2.6.1 Internet Explorer 6 for Windows XP .....	32
2.6.2 Internet Explorer 7 for Windows XP .....	32
2.6.3 Internet Explorer 7 for Windows Vista .....	33
Chapter 3. Web-based Management .....	35
3.1. Introduction .....	35
3.2. Connecting to Internet Camera .....	35
3.3 Live View .....	36
3.4 ActiveX Control .....	38
3.4.1 Digital Zoom .....	40
3.4.2 Snapshot .....	40
3.4.3 Record .....	40
3.4.4 Volume .....	41
3.4.5 About .....	41
3.5 Network Configuration .....	42
3.5.1 Network .....	42
3.5.2 IPv6 .....	44
3.5.3 HTTPS .....	44
3.5.4 DDNS server .....	45
3.5.5 PPPoE .....	46
3.5.6 Streaming .....	47
3.5.7 UPnP .....	48
3.5.8 Bonjour .....	49
3.5.9 IP Filter .....	50
3.5.10 IP Notification .....	50
3.6 Camera Configuration .....	52

3.6.1 Picture .....	52
3.6.2 Privacy Mask.....	55
3.6.3 PTZ Setting .....	55
3.6.4 Preset Setting .....	56
3.6.5 Tour Setting .....	57
3.7 System.....	58
3.7.1 System .....	58
3.7.2 Date & Time.....	59
3.7.3 Maintenance.....	60
3.8 Video .....	62
3.8.1 Common .....	62
3.8.2 Overlay Image .....	62
3.8.3 Video Profile.....	63
3.8.4 ROI .....	65
3.8.5 AOI.....	65
3.9 Audio Configuration .....	66
3.10 User Privilege Access Configuration .....	67
3.11 Protocol .....	68
3.11.1 ONVIF .....	68
3.11.2 SNMP .....	69
3.12 Mail Configuration .....	70
3.13 Event Detection .....	71
3.13.1 Motion Detection .....	71
3.13.2 Camera Tampering .....	72
3.13.3 Audio Detection .....	73
3.14 Storage Configuration .....	74
3.14.1 SD Card.....	74
3.14.2 SAMBA Server.....	75
3.15 Continuous Recording .....	75
3.16 Recording List .....	76
3.17 Event Server Configuration.....	77
3.17.1 FTP Server.....	77
3.17.2 TCP Server.....	78
3.17.3 HTTP Server .....	79
3.17.4 SAMBA Server.....	79
3.18 Event Schedule Configuration.....	81
3.18.1 Setting.....	81
3.18.2 Record Configuration .....	84
3.18.3 Port Status.....	85
Appendix A: PING IP Address.....	86
Appendix B: 3GPP Access .....	87
Appendix C: Bandwidth and Video Size Estimation .....	88
Appendix D: DDNS Application.....	89
Appendix E: Configure Port Forwarding Manually.....	90
Appendix F: Power Line Frequency .....	91
Appendix G: Troubleshooting & Frequently Asked Questions .....	92

## Chapter 1. Product Introduction

### 1.1. Package Contents

The package should contain the followings:

- IP Camera Unit x 1
- Power Adapter x 1
- Screw package x 1
- User's Manual CD-ROM x 1
- Quick Installation Guide x 1

**NOTE:**

1. If any of the above items are missing, please contact your dealer immediately.
2. Using the power supply that is not the one included in Internet Camera packet will cause damage and void the warranty for this product.

### 1.2. Overview

#### High Resolution Surveillance in Day and Night

PLANET ICA-4200V Network Camera with IR Illuminator is a high resolution camera for round-the-clock surveillance over IP networks. It supports H.264, MPEG-4, and JPEG compression formats and delivers excellent picture quality in Full HD resolutions at 30 frames per second (fps). Incorporating the new Exmor™ CMOS image sensor, which is specially designed for surveillance applications, the ICA-4200V provides high quality images under all lighting conditions. It is perfect for remote and discreet monitoring of indoor areas such as stores, banks, hotels, office lobbies, and warehouses.

## Full HD Resolution



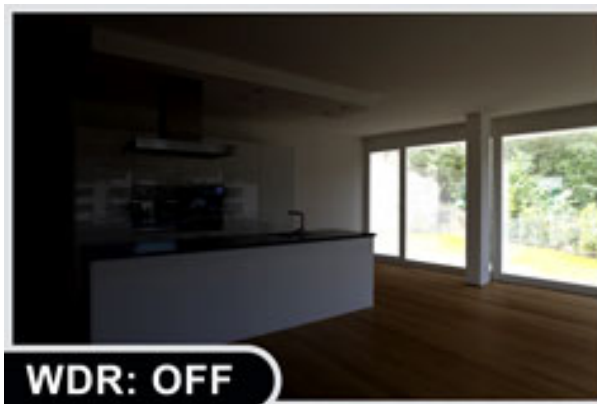
#### Day & Night Functionality

To adapt to constantly changing lighting conditions, the ICA-4200V comes with a removable IR-Cut filter and built-in IR illuminators, which enables the camera to provide color video when there is sufficient light, and black/white video in dark conditions. The ICA-4200V is able to maintain clear images 24 hours a day.



**Exceptional Image quality**

Together with powerful image processing attributes like Wide Dynamic Range and 3D Digital Noise Reduction (3DNR) technology, the camera is able to filter the intense backlight surrounding a subject and remove noises from video signal. The result is that an extremely clear and exquisite picture quality can be produced even under any challenging lighting conditions.



**Passive InfraRed (PIR) Sensor**

When people pass by or in an emergency situation, the built-in PIR motion detection sensor in the ICA-4200V will “detect” and start recording automatically. It is able to detect movement far from 6 meters away. When motion is detected in the specified areas, the additional function of alarm notification can send an e-mail alert or send captured images via FTP upload to a designated storage server.

**Camera tampering and audio detection**

Provided with three individually configurable motion detection zones, the camera can record video or trigger alarms or alerts when motion is detected in user-specified areas of the camera image. Also, the camera's built-in microphone enables it to hear what the video cannot see and to trigger the audio detection alarm when sounds like screams, glass breaking, etc., are detected.





### **Advanced Event Management**

To enhance surveillance flexibility and event management capabilities, the ICA-4200V supports a number of advanced features including Auto-Iris to avoid over exposure, AV out to perform the two-way audio function, RS485 to connect to an optional pan/tilt enclosure which effectively supports pan/tilt functionality, and inputs/outputs to connect with external devices such as door sensors and relays to activate light or close doors.

### **Flexible Installation and Power Functionality**

The ICA-4200V incorporates IEEE 802.3af Power over Ethernet standard and able to be powered via the network cable from a PoE power sourcing equipment such as PoE Switch and PoE injector. It thus eliminates the need for of extra power cables and reduces installation costs while increases the deployment flexibility. In addition, the ICA-4200V provides advanced features such as the Gigabit Ethernet Transmission, giving users the utmost in bandwidth flexibility and storage efficiency. The ICA-4200V is ONVIF compliant and therefore interoperable with other manufacturer's products. It also includes 64-CH central management software for ease of maintenance and remote monitoring. The ICA-4200V is indisputably the top choice for reliable and high performance surveillance.

## **1.3. Features**

### **➤ Camera**

- Sony's 1/2.9 type "Exmor" 2MP CMOS sensor
- 3.3~12.0 mm Vari-Focal, DC Auto-Iris Lens
- 0.5 lux Minimum Illumination at F1.2
- Maximum resolution 1920 x 1080
- Removable IR-Cut Filter for Day & Night Function
- Built-in PIR sensor (6m/120 degree coverage) for thermal / motion detection

### **➤ Video / Audio**

- H.264 / MPEG-4 and M-JPEG video compression simultaneously
- Simultaneous multi-stream support
- H.264 high profile, main profile and baseline
- Max. Resolution 1080P at 30fps
- 3DNR to improve picture quality at low Lux
- WDR Enhancement for enhance visibility under extremely bright or dark environments
- Two-Way audio support with enhanced audio quality
- Tamper and audio detection for unauthorized changes

### **➤ Network and Configuration**

- Compliant with IEEE 802.3af PoE interface for flexible deployment
- Equipped with Gigabit Ethernet port
- Auto MDI/MDI-X supported
- Supports for IPv6 in addition to the standard IP protocol version 4
- RTSP / UPnP / 3GPP / HTTPS protocols selectable

### **➤ Easy Installation & Management**

- ONVIF compliant for interoperability
- Built-in 12 IR Illuminators, effective up to 20 meters
- Intelligent Motion / Tampering / Audio detection alarm triggers
- Built-in Samba client for NAS

- 3GPP for 3G mobile remote applications
- Micro SD card local video recording supported
- RS485 interface for P/T scanner control
- Digital Input/Output for integration with sensors and alarms
- Cam Viewer 3 Central management software supported

## 1.4. Product Specification

<b>Model</b>	ICA-4200V <b>Full HD 20M IR Vari-Focal Dome IP Camera</b>
<b>Camera</b>	
<b>Image device</b>	1/2.9 type Sony Exmor progressive scan CMOS sensor
<b>Lens</b>	Vari-Focal 3.3~12.0mm, DC Auto-Iris Mechanical IR Cut Filter Angle of view : horizontal: 27 ~ 82 Degree / vertical: 19 ~ 64 Degree
<b>Min Illumination</b>	0.5 Lux (Color) @ F1.2 0.1 Lux (B/W)
<b>IR Illuminations</b>	IR LED x 12, 850nm Built-in IR illuminators, effective up to 20 meters
<b>Effective Pixels</b>	1920 x 1080 pixels
<b>Image</b>	
<b>Video Compression</b>	H.264 / MPEG-4 / M-JPEG
<b>Video Resolution</b>	<b>1080P mode</b> H.264: 1080P / 640 x 360 / 320 x 180 / 160 x 90 M-JPEG: 1080P / 640 x 360 / 320 x 180 / 160 x 90 MPEG4: 1080P / 640 x 360 / 320 x 180 / 160 x 90 <b>720P mode</b> H.264: 1280 x 720 / 640 x 360 / 160 x 90 M-JPEG: 1280 x 720 / 640 x 360 / 160 x 90 MPEG-4: 1280 x 720 / 640 x 360 / 160 x 90
<b>Frame Rate</b>	Up to 30fps for all resolutions
<b>Image Setting</b>	AE, AWB 3D Noise reduction WDR Color, brightness, sharpness, contrast Mirror/Flip 10 Privacy Masks Text, time and date overlay Overlay image on video
<b>Streaming</b>	Simultaneously multi-profile streaming Streaming over UDP, TCP, HTTP, or HTTPS M-JPEG streaming over HTTP (server push) Supports 3GPP mobile surveillance (MPEG4) Controllable frame rate and bandwidth Constant and variable bit rate (MPEG4/H.264) ROI
<b>Audio</b>	
<b>Audio Streaming</b>	Two-Way Audio

<b>Audio Compression</b>	RTSP: G.711 64kbps, G.726 32kbps 3GPP: AMR
<b>Microphone</b>	External microphone input
<b>Audio Output</b>	Adjustable audio output gain
<b>Network and Configuration</b>	
<b>Standard</b>	IEEE 802.3 10Base-T IEEE 802.3u 100Base-TX IEEE 802.3ab 1000Base-T
<b>Protocol</b>	IPv4, IPv6, TCP/IP, UDP, HTTP, HTTPS, SMTP, FTP, NTP, DNS, DDNS, DHCP, ARP, Bonjour, UPnP, RTSP, RTP, RTCP, IGMP, PPPoE, 3GPP, ICMP, Samba
<b>Security</b>	Password protection, IP address filtering, HTTPS encrypted data transmission, user access log
<b>Users</b>	20 clients on-line monitoring at the same time
<b>System Integration</b>	
<b>Application Programming Interface</b>	Open API for software integration ONVIF Compliant
<b>Alarm Triggers</b>	Intelligent Motion / Tampering / Audio detection and external input
<b>Alarm Events</b>	File upload via FTP, Samba to NAS, SD card or email Notification via email, HTTP, and TCP External output activation Audio alerting output Go to PTZ preset position
<b>Video Buffer</b>	Pre- and post-alarm buffering
<b>General</b>	
<b>Power Requirement</b>	12V DC, 1A IEEE 802.3af Class 3
<b>Power Consumption</b>	8W max.
<b>Operating Temperature</b>	0 ~ 50 Degree C
<b>Operating Humidity</b>	20 ~ 80% (non-condensing)
<b>Weight</b>	635g
<b>Dimension (Φ x L)</b>	152 x 109 mm
<b>Emission</b>	CE, FCC
<b>Connectors</b>	10/100/1000 Mbps Gigabit Ethernet, RJ-45 DC power jack Terminal block for 1 alarm input and 1 output RS-485 interface for scanners, pan/tilts External MIC input Audio out Composited video out (Max. resolution: D1 720 x 480 pixel)) Micro SD/SDHC card (Max 32GB, Class 6) Factory default reset

## Chapter 2. Hardware Interface

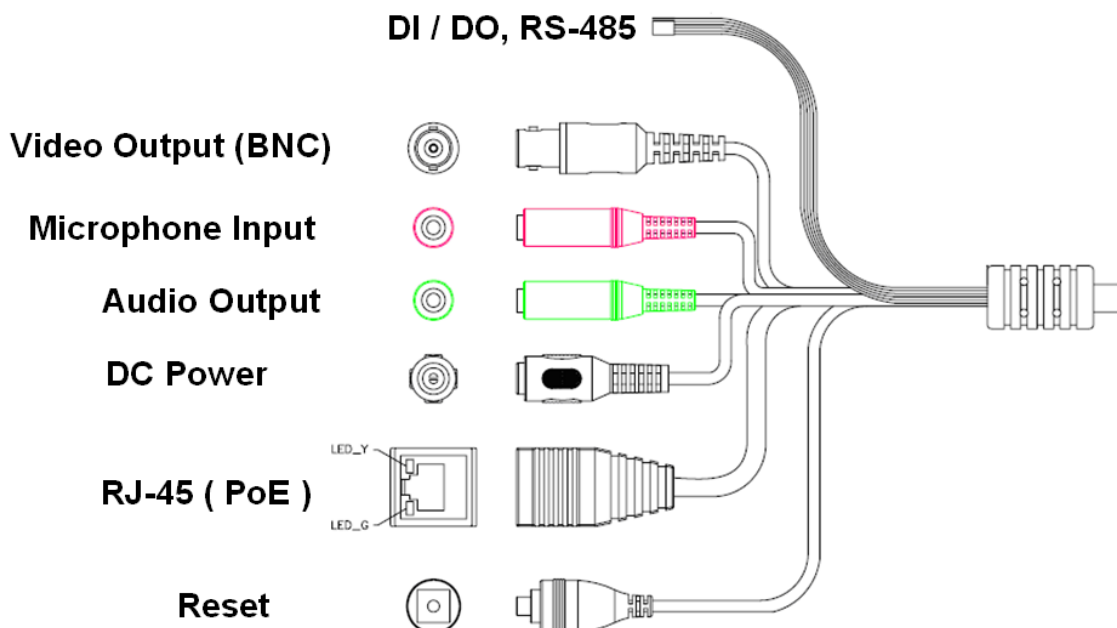
### 2.1 Physical Description

#### 2.1.1 Identification of ICA-4200V physical detail



Item	Description
<b>Lens</b>	Lens set. Keep this area clean to keep excellent video quality.
<b>IR LED</b>	Emits infrared light to provide light source in dark places
<b>Light sensor</b>	<p>Detects the illumination level or the place where this IP camera is installed, and switches IR LEDs on when it's required.</p> <p><b>NOTE:</b> When IR LEDs are switched on, this IP camera will switch to black and white video mode to enhance video quality. Do not cover light sensor or this IP camera will work in black and white mode only.</p>
<b>PIR</b>	PIR sensor is used to sense motion or detect whether a human has moved in or out of the sensors range.

## 2.1.2 I/O Control Instruction



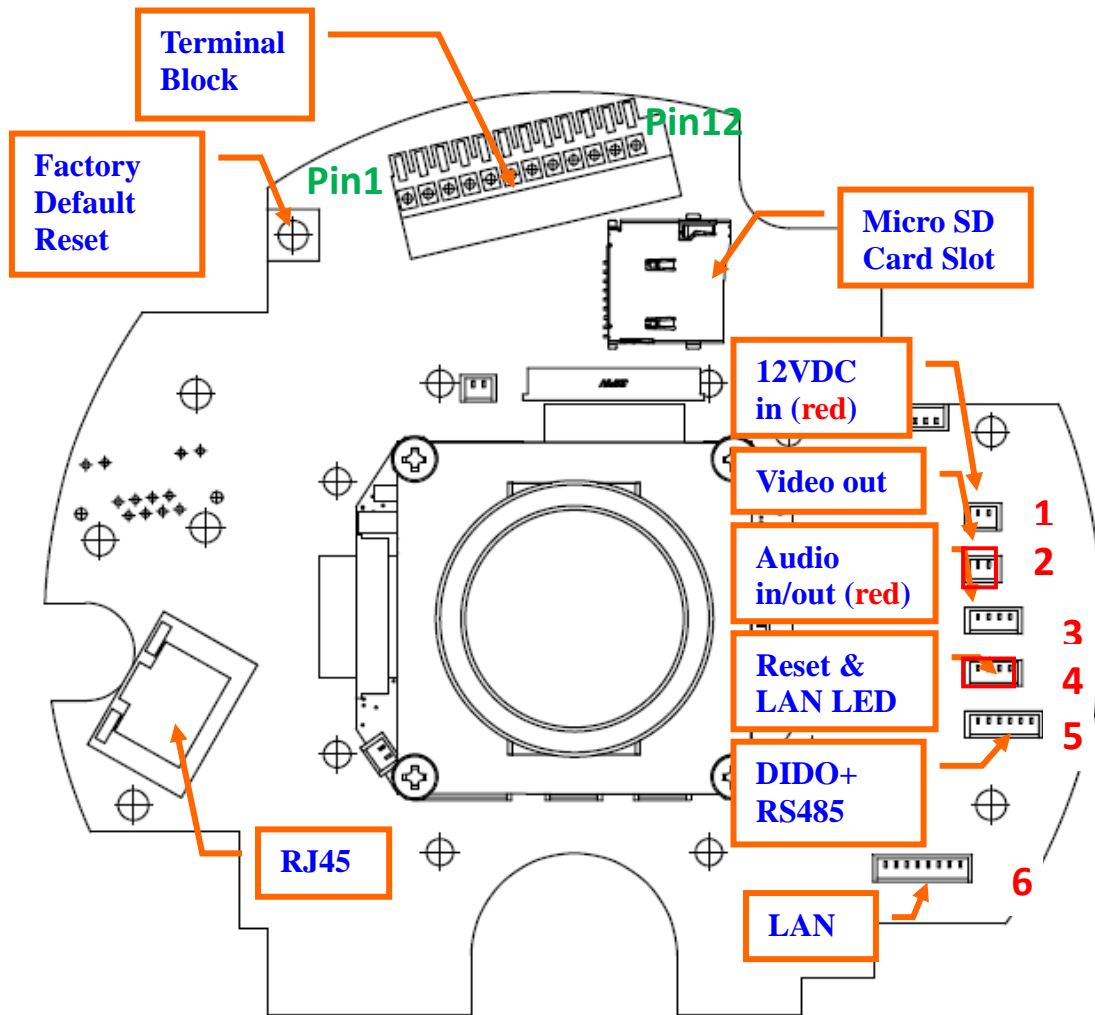
Descriptions for I/O cable set:

Interface	Description		
DC Power	The input power is DC 12V, 1A. <b>Note</b> : ONLY use package power adapter supplied with the internet. Otherwise, the product may be damaged.		
RJ-45 (LAN socket, PoE )	Connect to PC or Hub/Switch. For connect to 10Base-T Ethernet or 100Base-TX or 1000Base-TX Fast Ethernet cabling. This Ethernet port built auto-negotiation protocol can detect or negotiate the transmission speed of the network automatically. Please use CAT-5 cable to connect the Network Camera to a 1000Mbps Fast Ethernet network switch or hub. <b>Note</b> : ONLY use one power source, either from DC or from 802.3af Power over Ethernet.		
Audio Output (Green, Line Out)	Connect a loud speaker to the IP Camera. This is for voice alerting and two-way audio.		
Microphone Input (Pink, Audio In)	Connect a microphone to the IP Camera.		
Video Output (BNC)	The Network Camera also provides composite video output. The video output function is only for easy installation to check view angle and focus. The output is not a Mega-pixel resolution. Furthermore, the video output is off by default. Please turn on video.		
Reset (Factory Default)	This button is used to restore the all factory default settings.		
DI/DO, RS-485	The 6 pin terminal block includes 1 input ports and 1 output ports, and RS-485 D+ and D-.		
	Name	Cable Color	Function



	12VDC	Brown/White	DC 12V (50mA maximum)
	GND	Blue/White	GND
	D+	Purple/White	RS485 data +
	D-	Gray	RS485 data -
	DI	Green/White	Digital signal input
	DO	Orange/White	Digital signal output

### 2.1.3 Connector board



Interface	Description		
Terminal block	Pin	Name	Function
	1	12VDC in	DC 12V power input
	2	MIC in-	External MIC input-
	3	MIC in+	External MIC input+
	4	Audio out+	
	5	Audio out-	
	6	Video out	Composited video output
	7	12VDC out	DC 12V output (50mA maximum)
	8	DI	Digital signal input
	9	GND	Digital ground
	10	DO	Digital signal output
	11	RS485+	RS485 data +
	12	RS485-	RS485 data -

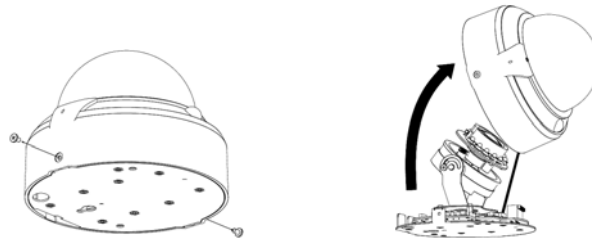
<b>RJ-45 (LAN socket, PoE )</b>	Connect to PC or Hub/Switch. For connect to 10Base-T Ethernet or 100Base-TX or 1000Base-TX Fast Ethernet cabling. This Ethernet port built auto-negotiation protocol can detect or negotiate the transmission speed of the network automatically. Please use CAT-5 cable to connect the Network Camera to a 1000Mbps Fast Ethernet network switch or hub. <b>Note</b> : ONLY use one power source, either from DC or from 802.3af Power over Ethernet.
<b>12VDC in &amp; Power GND</b>	The input power is DC 12V, 1A. <b>Note</b> : ONLY use package power adapter supplied with the internet. Otherwise, the product may be damaged.
<b>MIC in (audio in)</b>	Connect an external microphone to the camera.
<b>Audio out +/-</b>	Connect a loud speaker to the camera. This function is for voice alerting and two-way audio.
<b>Video out</b>	Connect a TV monitor to the camera. User can check the focus/zoom and view angle of the camera.
<b>DI/GND/DO/RS485</b>	The 6 pin terminal block includes 1 input ports and 1 output ports, and RS-485 D+ and D-.
<b>Factory Default Reset</b>	This button is used to restore the all factory default settings. Restore the device: a. Press the button down continuously. b. Hold the button at least 5 seconds and release it. Then the device has been restored to default settings and reboot again.
<b>Micro SD Card Slot</b>	User can insert a micro SD card into this slot for recording.

**NOTE:** That to cabling this camera by type of connector board, firstly, user must remove the attached “connector cable” from wafer 1~ 6 shown as below:

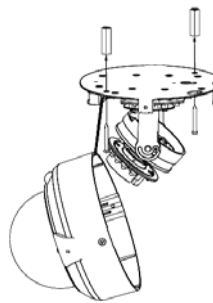
## 2.2 Hardware Installation

### 2.2.1 Connector board

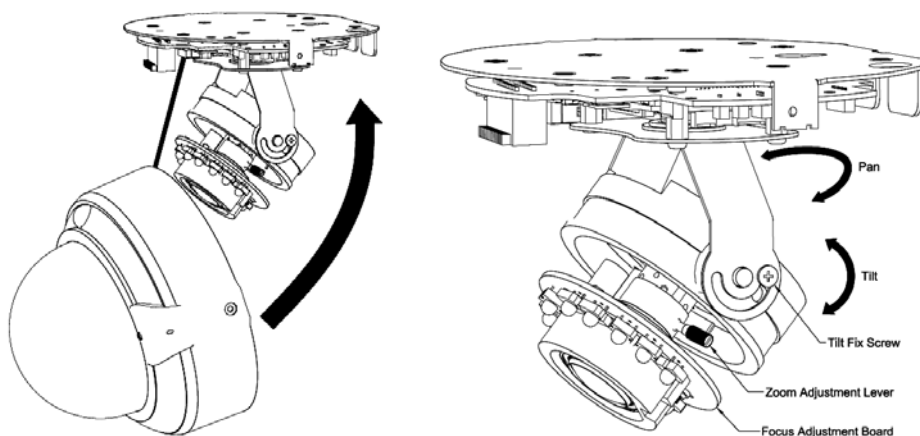
1. Please select the most suitable position on ceiling to install the camera.
2. Remove two screws to release the top cover of the dome and open it.



3. Set the mounting base onto ceiling and center it through the mounting hole, using the two retaining screws for the main body, supplied by the appurtenance bag.



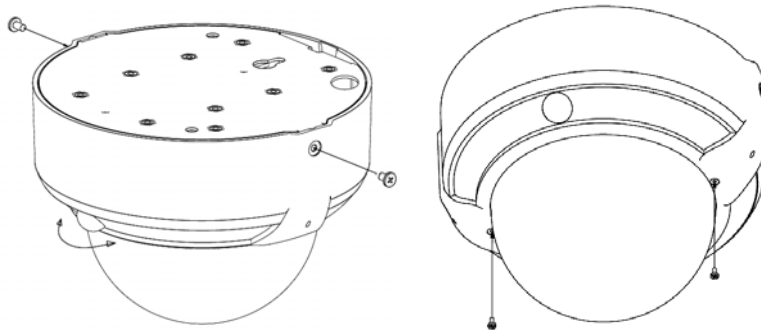
4. To adjust lens, move the camera body by pan and/or tilt manually and set the zoom/focus by turning the lens to the left or right direction.



5. Connect the LAN cable to Ethernet's switch or hub and the DC-Jack to the power source.

**NOTE:** Use the power adapter, 12VDC, included in the package and connect it to wall outlet for AC power. And connect the other cables and connectors if necessary.

6. When the camera cabling is completed, close the top cover dome housing and secure it by two screws. And then adjust PIR sensor to proper position. Once the PIR sensor is well [position, then secure it by another two screws.



6. Done

## 2.2.2. Network Installation

### 1. Connect an Ethernet cable

Connect the LAN cable on the camera to the network device (hub or switch).

**NOTE:** If there has an IEEE802.3af PoE switch in your network, you can connect the camera LAN cable to this PoE switch to obtain power. The power adapter is unnecessary when Internet camera is connected to a PoE switch.

### 2. Attach the power supply

Plug in power adapter and connect to power source. After power on, the camera will start to operate.

**NOTE:**

1. Only use the power adapter supplied with Internet camera Otherwise, the product may be damaged.
2. The power adapter is unnecessary when Internet camera is connected to a PoE switch. Otherwise, the product may be damaged when Internet camera is connected to a PoE switch and power adapter simultaneously.

### 3. Attach BNC connector

Connect the video BNC connector to a monitor set if necessary check camera viewing angle and focus.

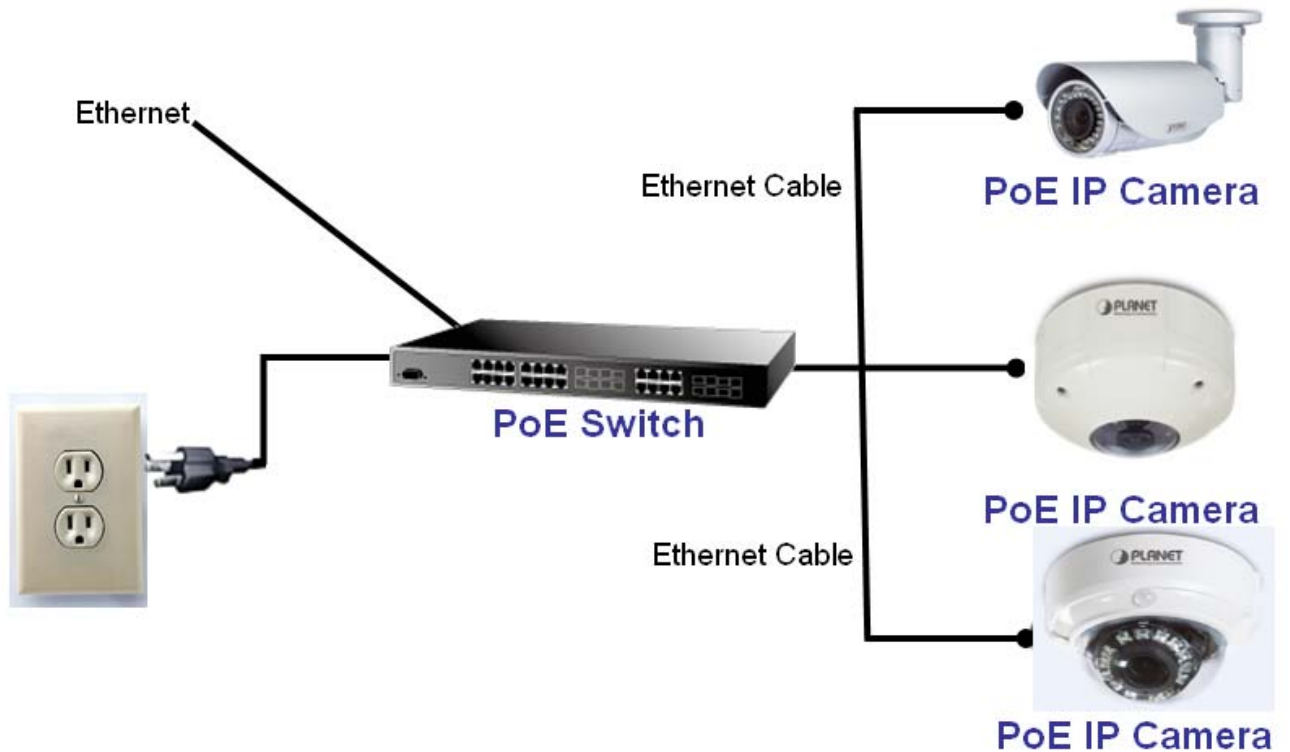


#### 4. Attach Speaker to camera (option)

If user needs not only video stream but also audio stream, then the speaker should be attached to camera.

#### 5. PoE (Power Over Ethernet)

Power over Ethernet (PoE) is a technology that integrates power into a standard LAN infrastructure. It enables power to be provided to the network device, such as an IP phone or a network camera, using the same cable as that used for network connection. It eliminates the need for power outlets at the camera locations and enables easier application of uninterruptible power supplies (UPS) to ensure 24 hours a day, 7 days a week operation.

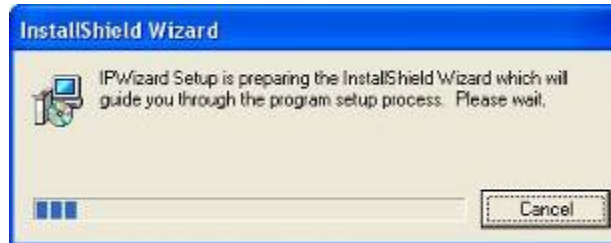


## 2.3 Initial Utility Installation

This chapter shows how to quick set up your H.264 camera. The camera is with the default settings. However to help you find the networked camera quickly the windows utility PLANET IP Wizard II can search the cameras in the network that shall help you to configure some basic setting before you started advanced management and monitoring.

1. Insert the bundled CD into the CD-ROM drive to launch the auto-run program. Once completed, a welcome menu screen will appear.
2. Click the "IP Wizard II" hyperlink; you will see the dialog box as below.

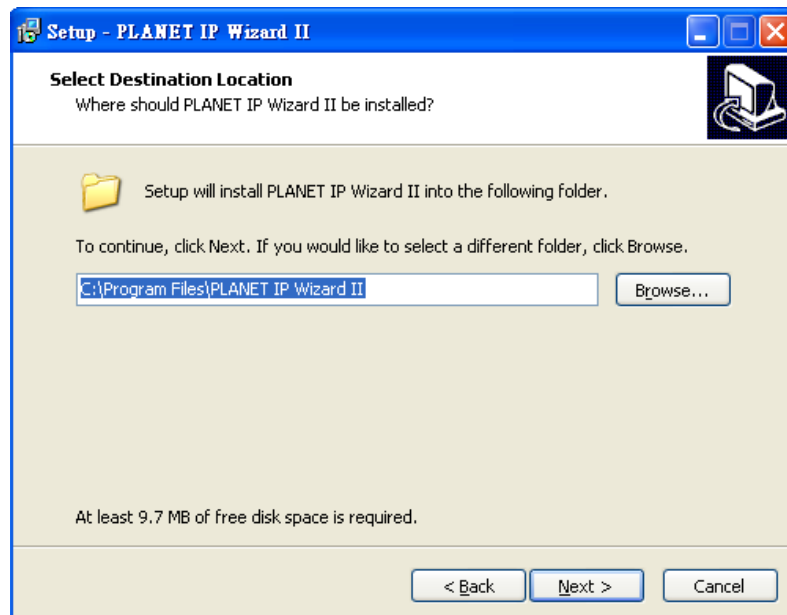
**NOTE:** If the welcome screen does not appear, click "Start" at the taskbar. Then, select "Run" and type "D:\Utility\IPWizard II\setup.exe", assume D is your CD-ROM drive.



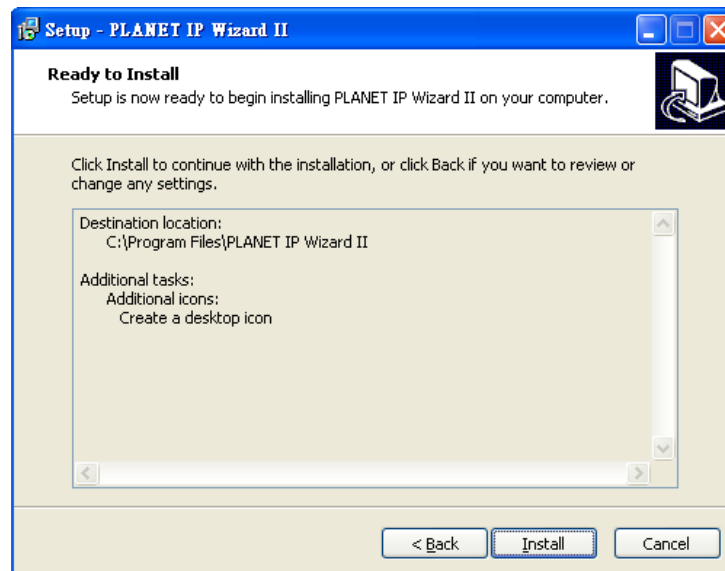
3. The "Welcome to the Install Shield Wizard for PLANET IP Wizard II" prompt will display on the screen and click "**Next**" to continue.



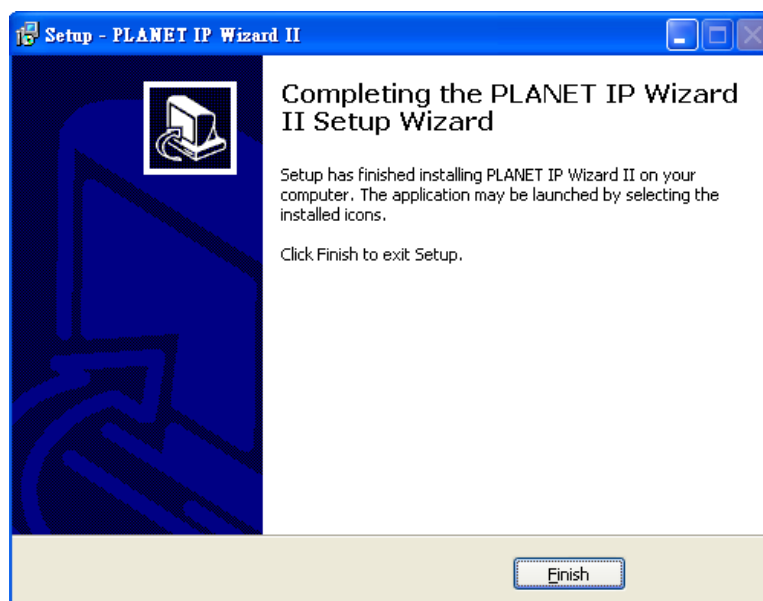
4. Please click "**Next**" to install with original settings, or you may click "**Change...**" button to modify the install folder then press "Next" to continue.



5. Please click **"Install"** to start the installation.



6. Please click **"Finish"** to complete the installation and launch program immediately.



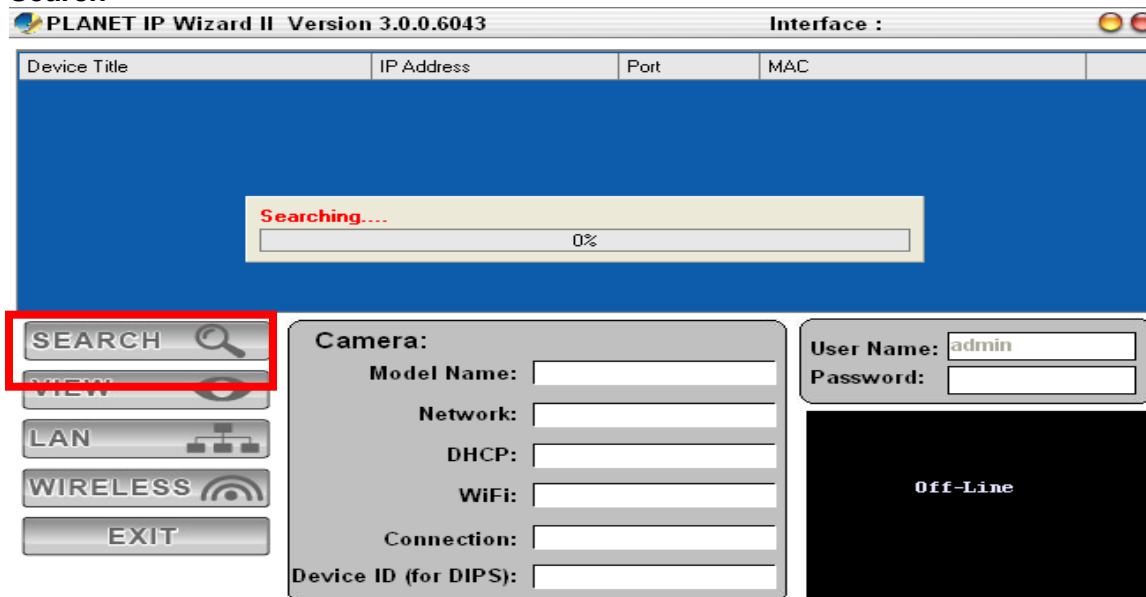
## 2.4 Preparation

When you installed the Internet Camera on a LAN environment, you may execute PLANET IP Wizard II to discover camera's IP address and set up related parameters in the camera.

### 2.4.1 Search and View by PLANET IP Wizard II

When you installed the Internet Camera on a LAN environment, you have two easy ways to search your cameras by PLANET IP Wizard II or UPnP discovery. Here is the way to execute PLANET IP Wizard II to discover camera's IP address and set up related parameter in a camera.

#### Search




When launch the Planet IP Wizard II, a searching windows will pop up. Planet IP Wizard II is starting to search Internet Cameras on the LAN. The existed devices will be listed as below.


PLANET IP Wizard II Version 3.0.0.6043 Interface : 10.1.1.206


Device Title	IP Address	Port	MAC
PLANET IP Camera	10.1.1.98	80	00-30-4F-A2-92-70


**Searching...**

22%

**SEARCH** 

**VIEW** 

**LAN** 

**WIRELESS** 

**EXIT**

**Camera:**

**Model Name:** ICA-4200V

**Network:** Wired

**DHCP:** ON

**WiFi:** Ethernet Only

**Connection:** Not Connected

**Device ID (for DIPS):** N/A

**User Name:** admin

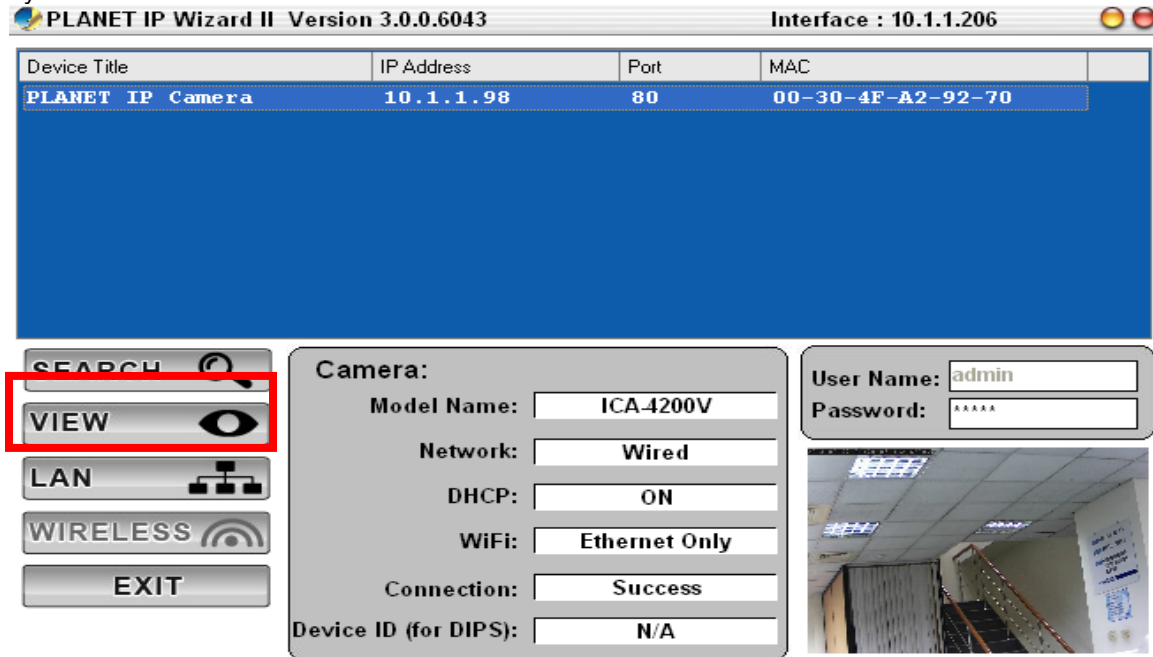
**Password:** \*\*\*\*\*

Off-Line



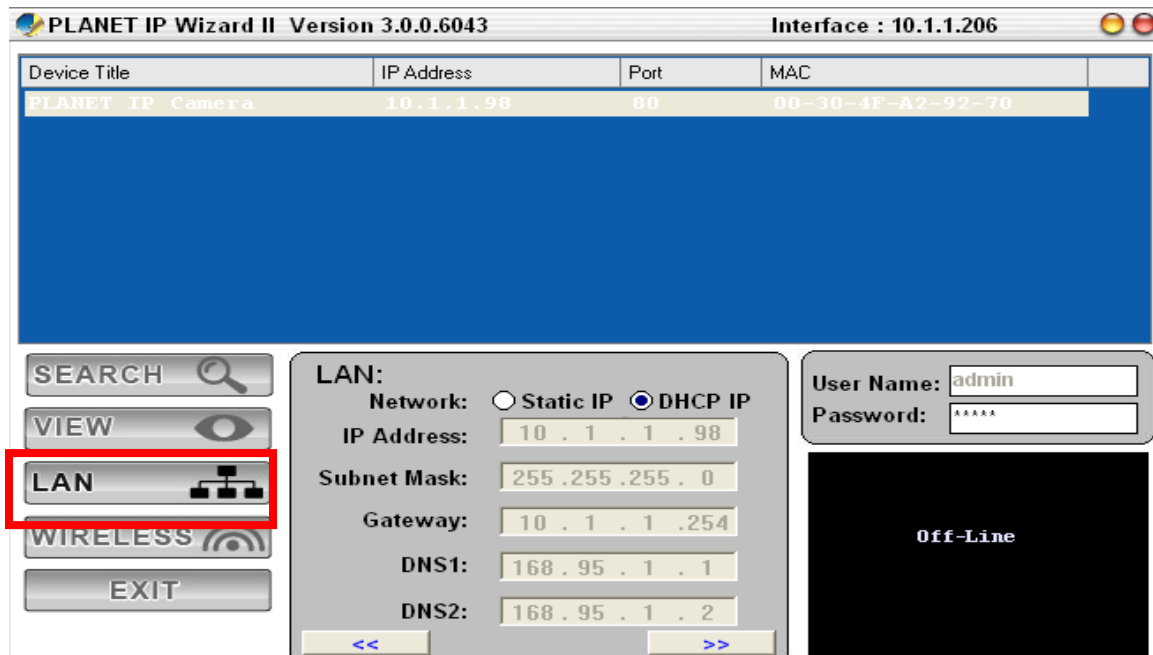
## View

If PLANET IP Wizard II finds Internet Camera, View button will be available. Please select the camera you want to view and click the View button. Then you could see the Video from camera directly. Furthermore you could double click the left button of mouse to link to the Internet Camera by browser.



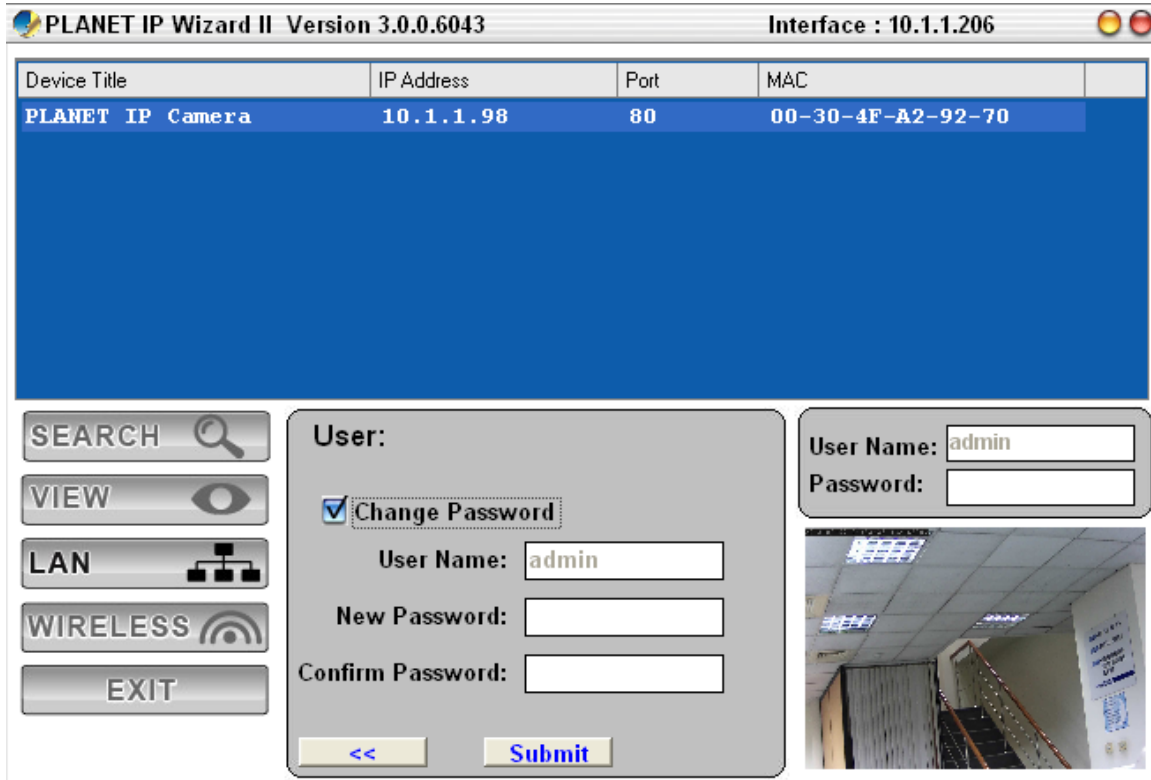
## 2.4.2 Configure Network by PLANET IP Wizard II

In case you want to change the IP related parameters of wired interface, please select the Internet Camera you want to configure and click the LAN button. Relative settings will be carried out as below.



In case, you do not want to change username and/or password, then just click "Submit" button to

perform your setting accordingly. Click “<<” button will go back to previous page.  
If you like to change username and/or password of the device, just click the check button. Then, the related fields will show up as below.



Device Title	IP Address	Port	MAC
PLANET IP Camera	10.1.1.98	80	00-30-4F-A2-92-70

SEARCH VIEW LAN WIRELESS EXIT

User:

☒ Change Password

User Name: admin

New Password:

Confirm Password:

<< Submit

User Name: admin

Password:

Video Feed: Staircase

After keying in new username and password, click “Submit” button to perform your setting accordingly. Click “<<” button will go back to previous page.

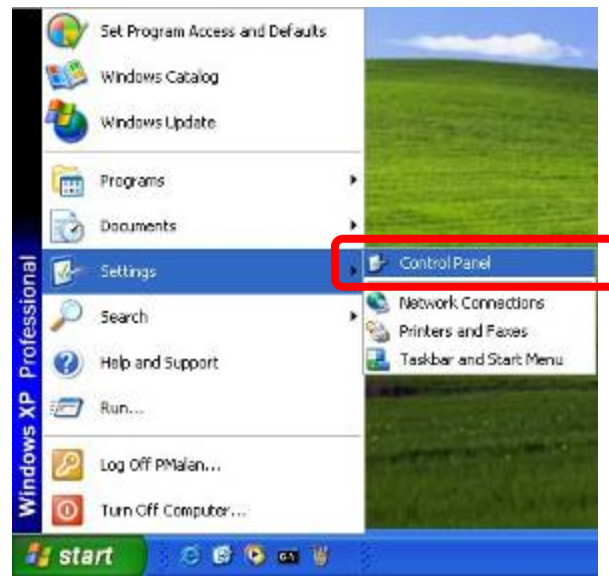
## 2.5 Using UPnP of Windows XP or 7

### 2.5.1 Windows XP

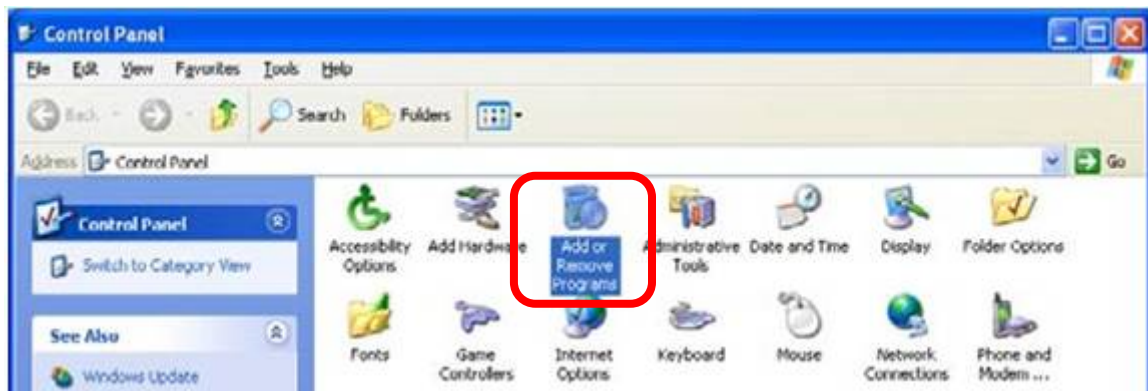
UPnP™ is short for Universal Plug and Play, which is a networking architecture that provides compatibility among networking equipment, software, and peripherals. This device is an UPnP enabled device. If the operating system, Windows XP, of your PC is UPnP enabled, the device will be very easy to configure. Use the following steps to enable UPnP settings only if your operating system of PC is running Windows XP.

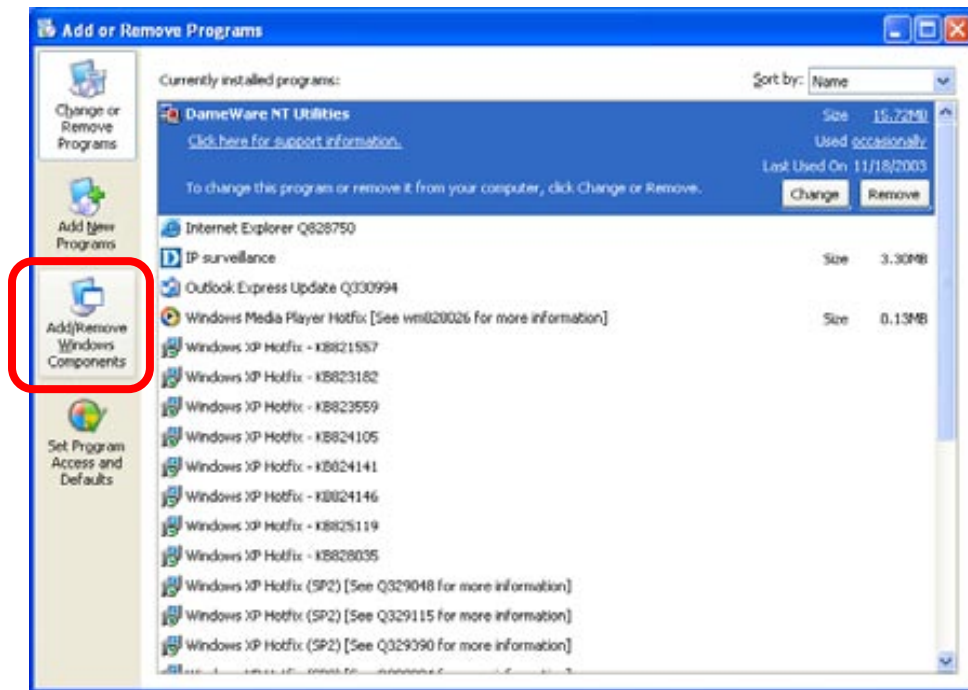
**NOTE:** Please notice that MS Windows 2000 does not support UPnP feature.

Go to **Start > Settings**, and Click **Control Panel**.



The **"Control Panel"** will display on the screen and double click **"Add or Remove Programs"** to continue.

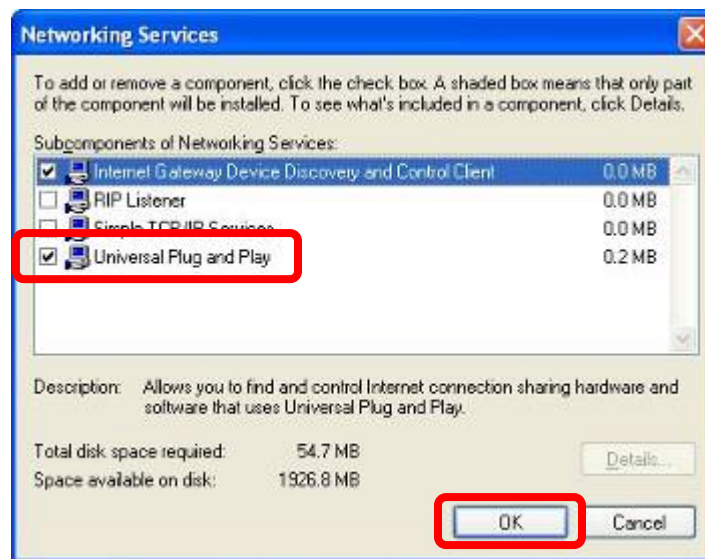




The following screen will appear, select **"Networking Services"** and click **"Details"** to continue.



The "Networking Services" will display on the screen, select **"Universal Plug and Play"** and click **"OK"** to continue.

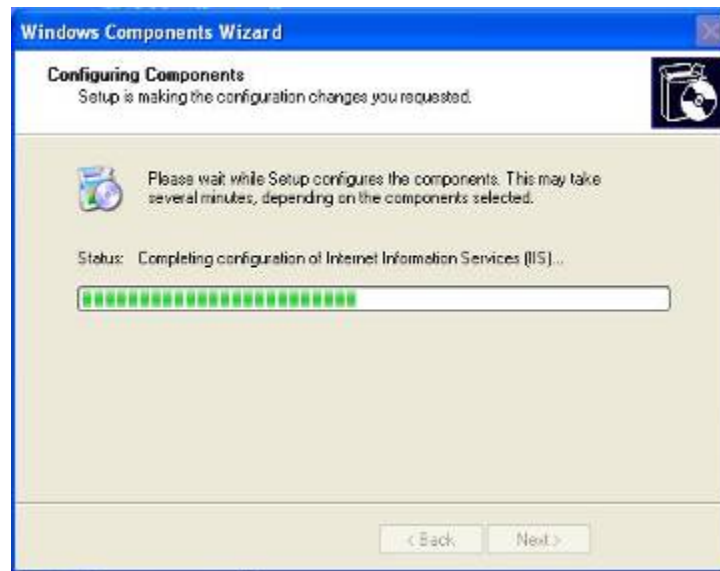


Please click **"Next"** to continue.



The program will start installing the UPnP automatically. You will see the below pop-up screen, please wait while Setup configures the components.

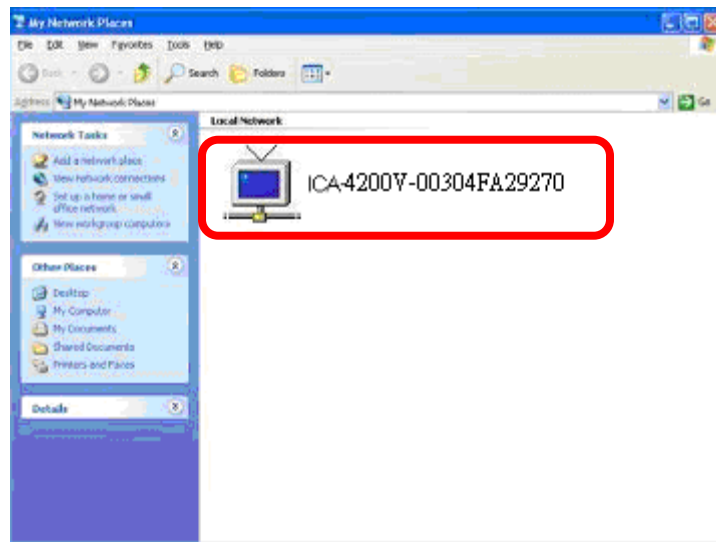




Please click **"Finish"** to complete the UPnP installation




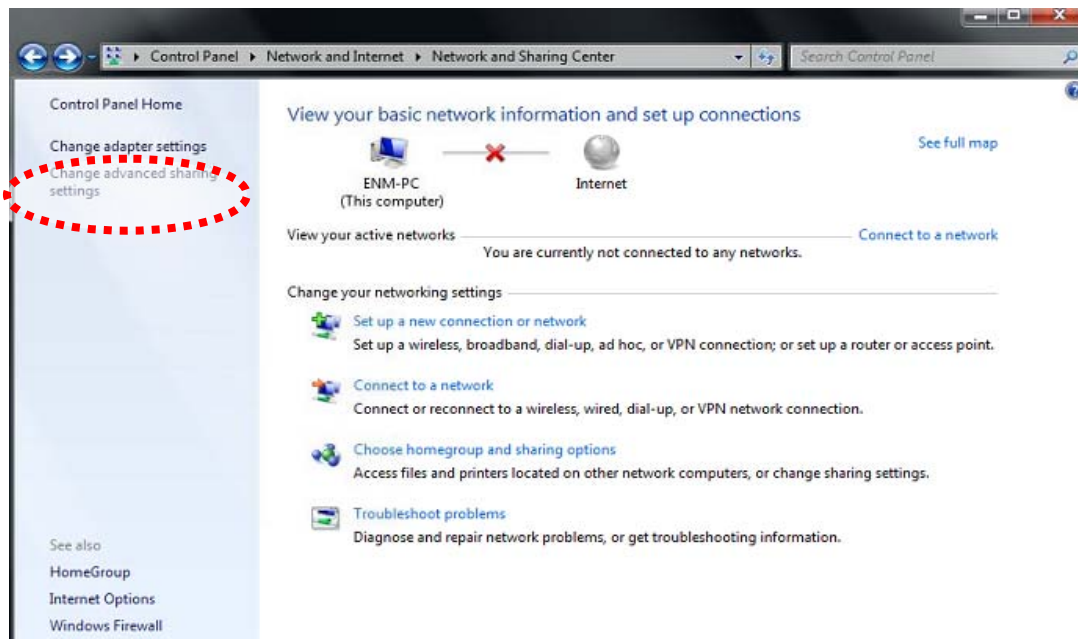
Double-click **"My Network Places"** on the desktop, the "My Network Places" will display on the screen and double-click the UPnP icon with Internet Camera to view your device in an internet browser.

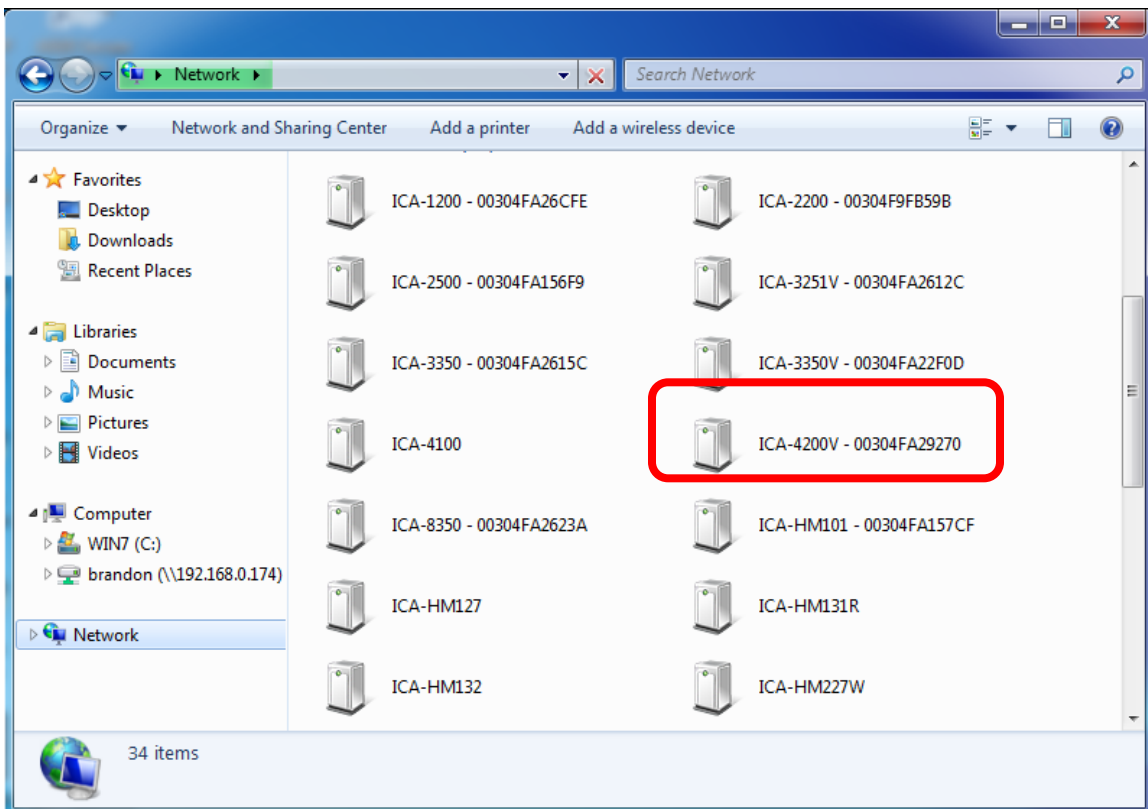
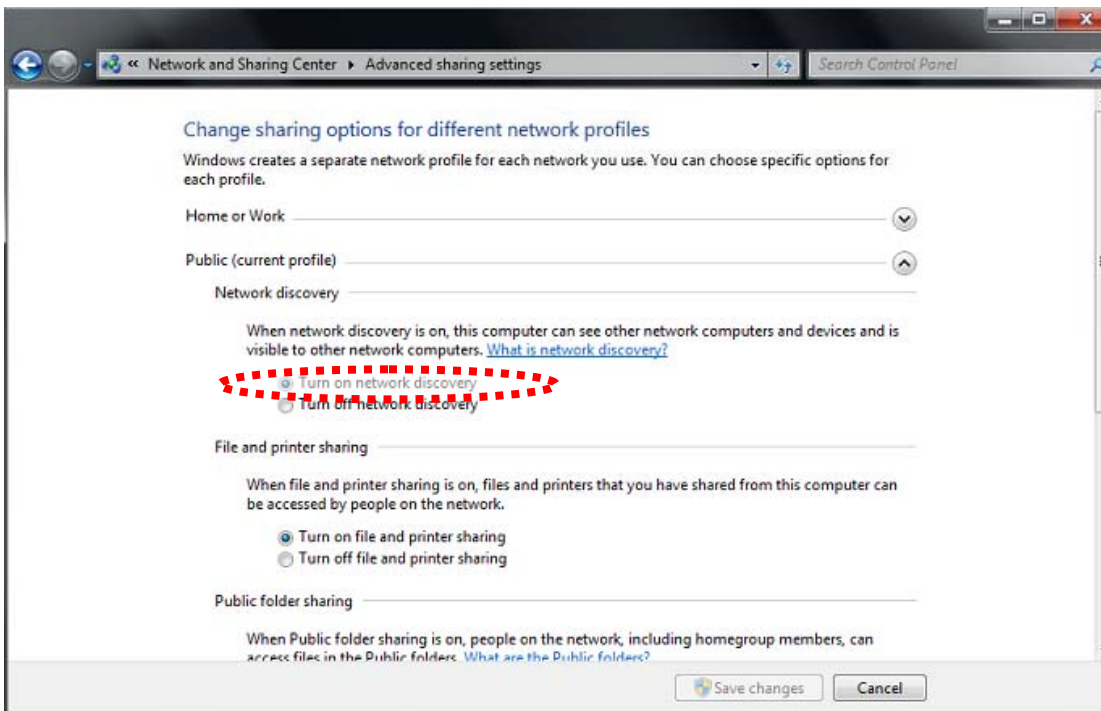


## 2.5.2 Windows 7

Go to **Start > Control Panel > Network and Internet > Network and Sharing Center**, if network discovery is off; click the arrow button  to expand the section.

Click Turn on network discovery, and then click Apply.  If you are prompted for an administrator password or confirmation, type the password or provide confirmation.





## 2.6 Setup ActiveX to use the Internet Camera

The Internet Camera web pages communicate with the Internet Camera using an ActiveX control.

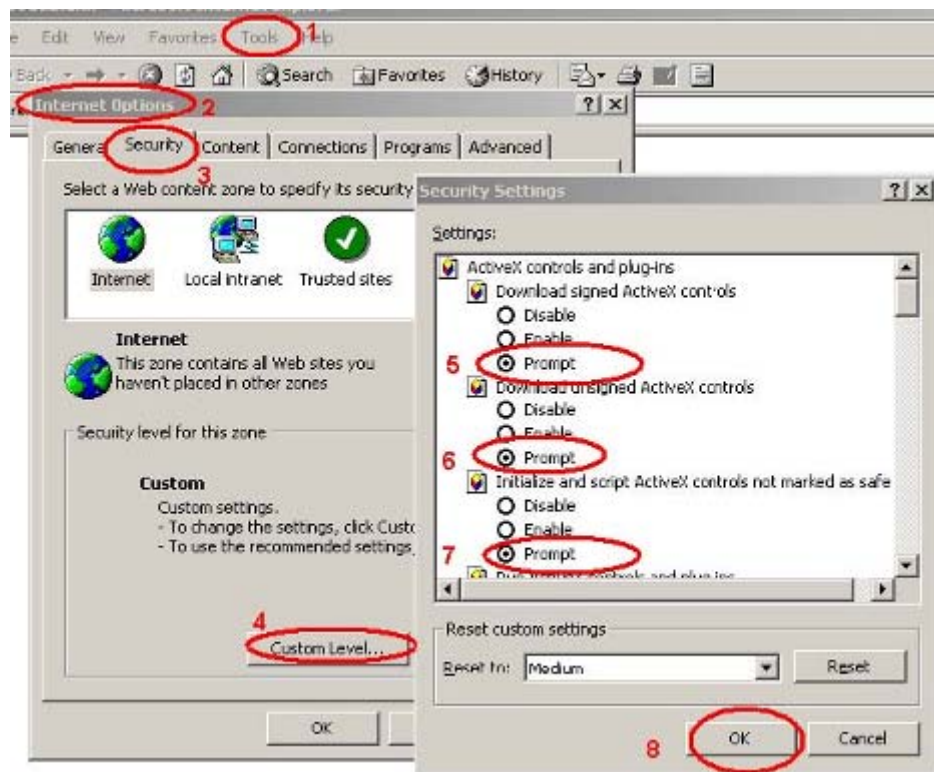
The ActiveX control must be downloaded from the Internet Camera and installed on your PC. Your Internet Explorer security settings must allow for the web page to work correctly. To use the Internet Camera, user must setup his IE browser as follows:

### 2.6.1 Internet Explorer 6 for Windows XP

From your IE browse → "Tools" → "Internet Options..." → "Security" → "Custom Level...", please setup your "Settings" as follow.

Set the first 3 items

- Download the signed ActiveX controls
- Download the unsigned ActiveX controls
- Initialize and script the ActiveX controls not masked as safe to Prompt



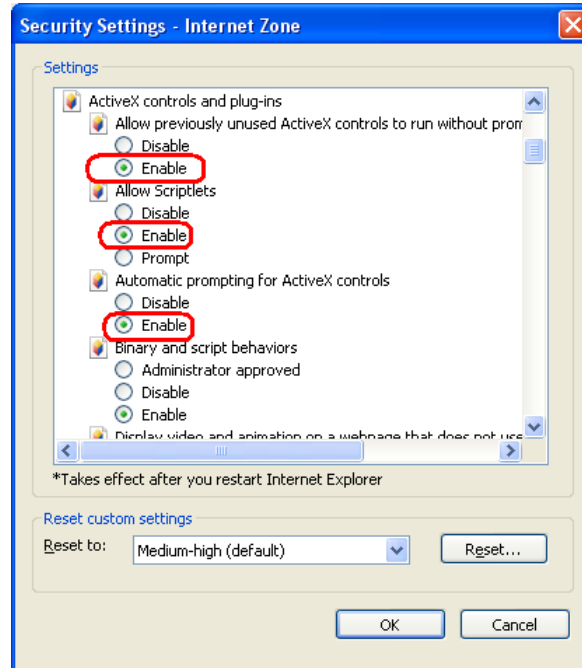
By now, you have finished your entire PC configuration for Internet Camera.

### 2.6.2 Internet Explorer 7 for Windows XP

From your IE browse → "Tools" → "Internet Options..." → "Security" → "Custom Level...", please setup your "Settings" as follow.

Set the first 3 items

- Allow previously unused ActiveX control to run...
- Allows Script lets
- Automatic prompting for ActiveX controls

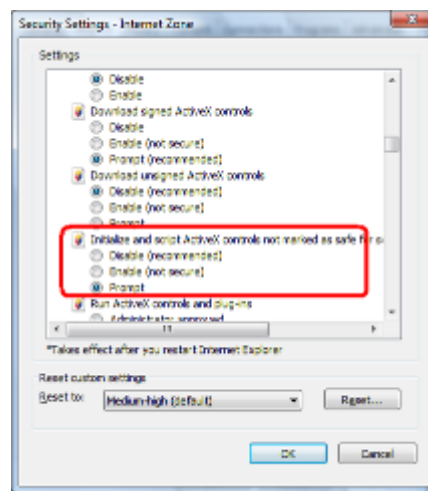
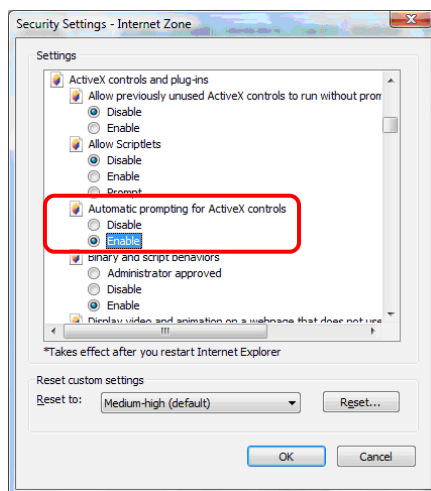


By now, you have finished your entire PC configuration for Internet Camera.

### 2.6.3 Internet Explorer 7 for Windows Vista

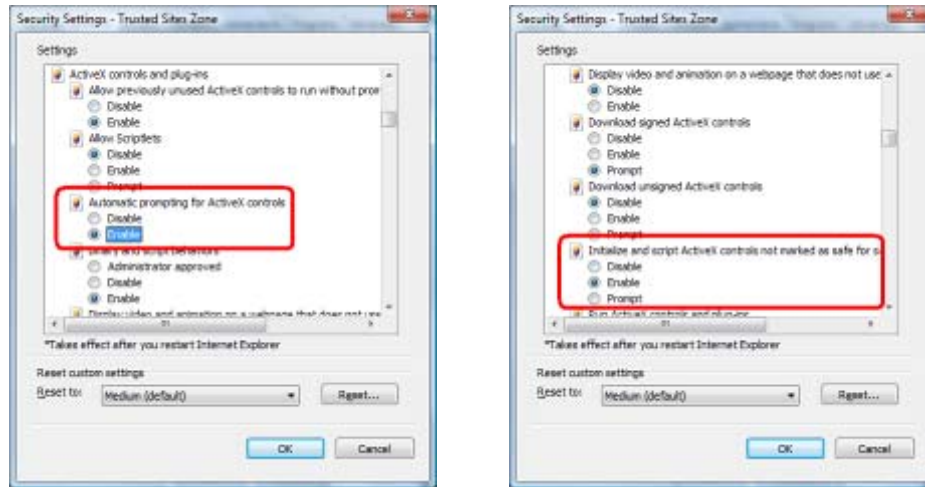
From your IE browse → "Tools" → "Internet Options..." → "Security" → "Internet" → "Custom Level...", please setup your "Settings" as follow.

- Enable "Automatic prompting for ActiveX controls"
- Prompt "Initialize and script active controls not marked as safe for script"



From your IE browse → "Tools" → "Internet Options..." → "Security" → "Trusted Sites" → "Custom Level...", please setup your "Settings" as follow.

- Enable “Automatic prompting for ActiveX controls”
- Prompt “Initialize and script active controls not marked...”



By now, you have finished your entire PC configuration for Internet Camera.

## Chapter 3. Web-based Management

This chapter provides setup details of the Internet Camera's Web-based Interface.

### 3.1. Introduction

The Internet Camera can be configured with your Web Browser. Before configure, please make sure your PC is under the same IP segment with Internet Camera.

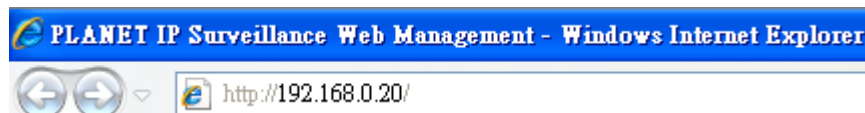
### 3.2. Connecting to Internet Camera

A. Use the following procedure to establish a connection from your PC to the Internet Camera.

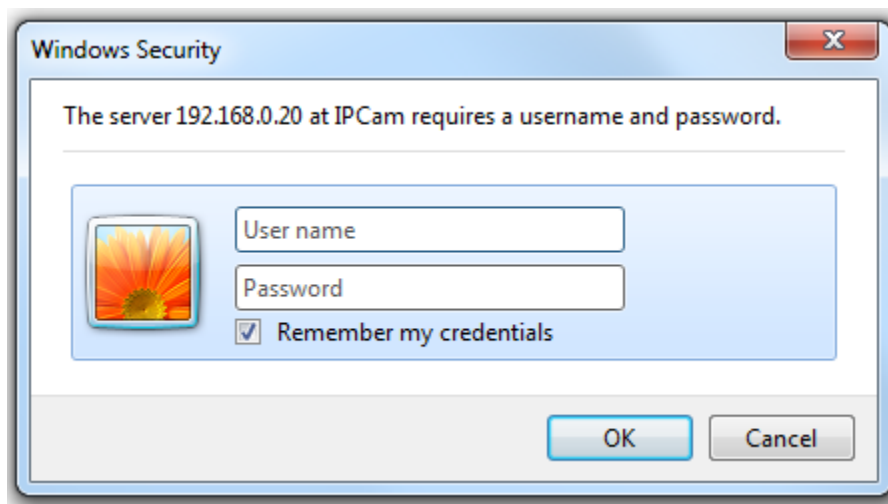
B. Once connected; you can add the camera to your Browser's Favorites or Bookmarks.

Start the web browser on the computer and type the IP address of the camera.

The Default IP: "<http://192.168.0.20/>"



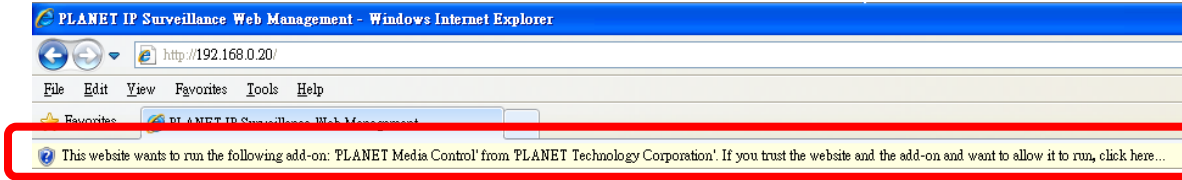
The login window of Internet Camera will appear,  
Default login **username/password** is: **admin / admin**



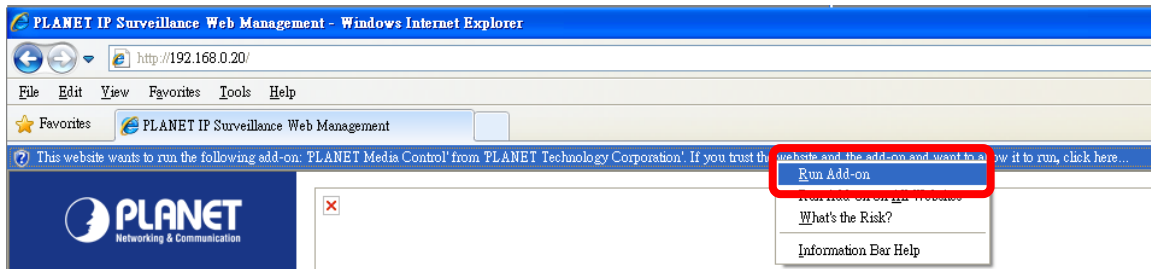
**NOTE:** If the User name and Password have been changed with PLANET IP Wizard II, please enter the new User name and Password here.



After logged on, you should see the following messages at the top of Internet Explorer:



Click on the message, and click **Run Add-on**



When you see this message, click **Run** to install required ActiveX control



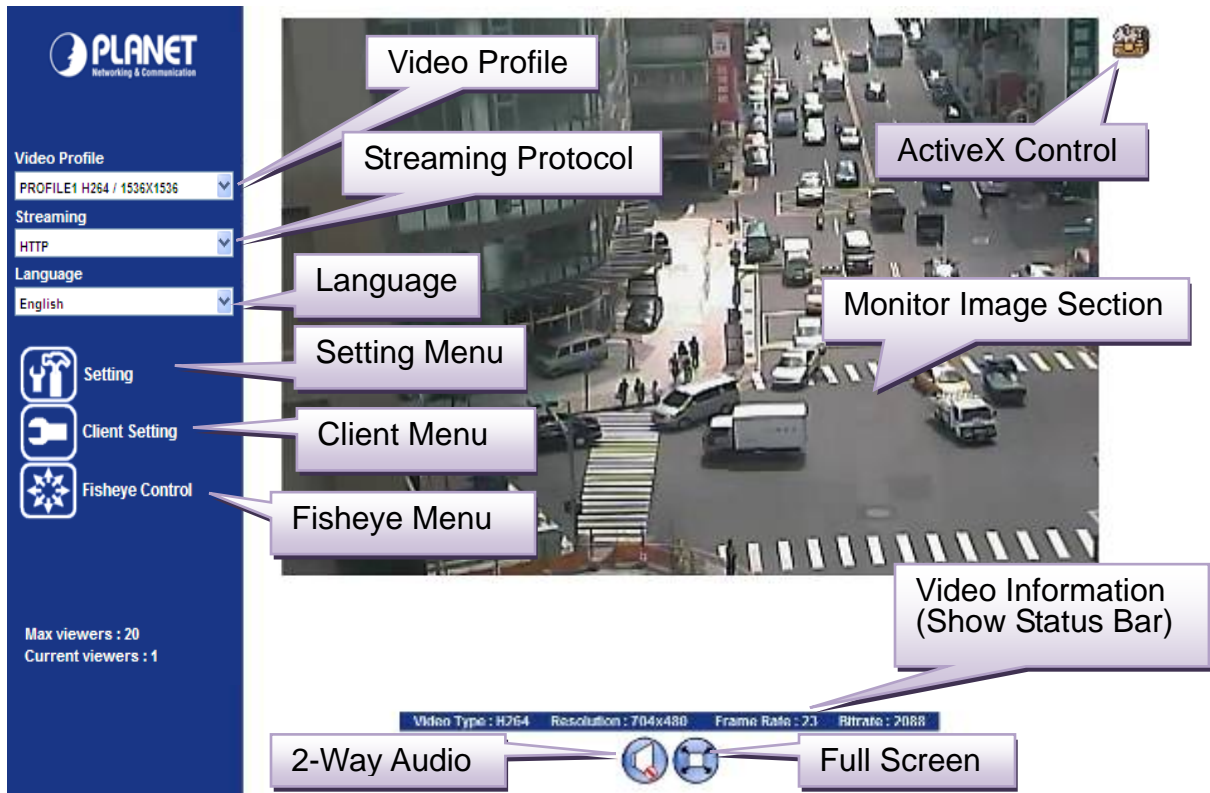
After the ActiveX control was installed and run, the first image will be displayed.

You should be able to see the images captured from the Internet Camera in the web page now. For advanced functions, please refer to instructions given in follows chapters.

**NOTE:** If you log in the camera as an ordinary user, setting function will be not available. If you log in the camera as the administrator, you can perform all the settings provided within the device.

### 3.3 Live View

Start-up screen will be as follow no matter an ordinary users or an administrator.



### Monitor Image Section

The image shot by the camera is shown here. The date and time are displayed at the top of the window.

### Video Profile

The camera support multi-profile for three compressions H264, MPEG-4 and M-JPEG simultaneously. User can chose the proper and/or preferred profile here.

### Full Screen

Click this button to display the image in full-screen mode (uses every available space to display the image captured by this camera).

### 2-Way Audio

The Internet Camera supports 2-way audio function. User can chose to enable or disable this function by toggling the icon below



: Disable audio uploading function.



: Enable audio uploading function.

### ActiveX Control

The plug-in ActiveX control supports a lot of functions by clicking the left mouse button. Note that this feature only supports on the ActiveX control within Microsoft® Internet Explorer.

## Setting Menu

This function is detail setting for the camera that only available for user logged into camera as administrator.

Item	Action
Network	Configure Network settings such as IPv6, ONVIF, DHCP, DDNS, 3GPP, PPPoE and UPnP.
Camera	Adjust camera parameters.
System	Configure system information, date & time, maintenance, and view system log file.
Video	Configure bit rate and frame rate of video profiles.
Audio	Configure audio parameters.
User	Setup user name, password and login privilege.
Protocol	Setup ONVIF and SNMP configuration.
E-Mail	Setup E-Mail configuration.
Object Detection	Setup Object detection.
Storage	Status and configuration of SD card and Samba server.
Continuous Recording	Files list inside the SD Card and Samba server.
Recording List	Files list inside the SD Card.
Event Server	Setup FTP/TCP/HTTP/Samba server for event
Event Schedule	Configure the schedule while event triggered.

### Streaming Protocol

User can select proper streaming protocol according to networking environment.

### Language

The device could provide multiple languages to meet customer's requirement.

### Client Setting:

Click this button to display the client extra control panel for 2-way Audio and Full Screen.

### Video Information

Display video information including video format, resolution, frame rate and bit rate.

## 3.4 ActiveX Control

The plug-in ActiveX control supports a lot of functions by clicking the left mouse button. Note that this feature only supports on the ActiveX control within Microsoft® Internet Explorer.

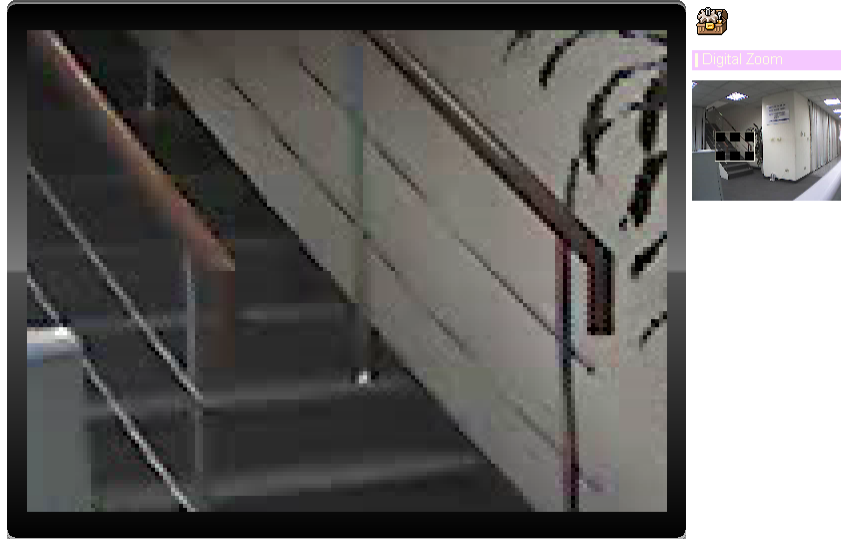
On the ActiveX control icon, click the Left Mouse Button, then a menu pop-up. This menu provides features that are unique to the ActiveX control. These features include:

- Digital Zoom,
- Snapshot,
- Record,
- Volume,
- About



### 3.4.1 Digital Zoom

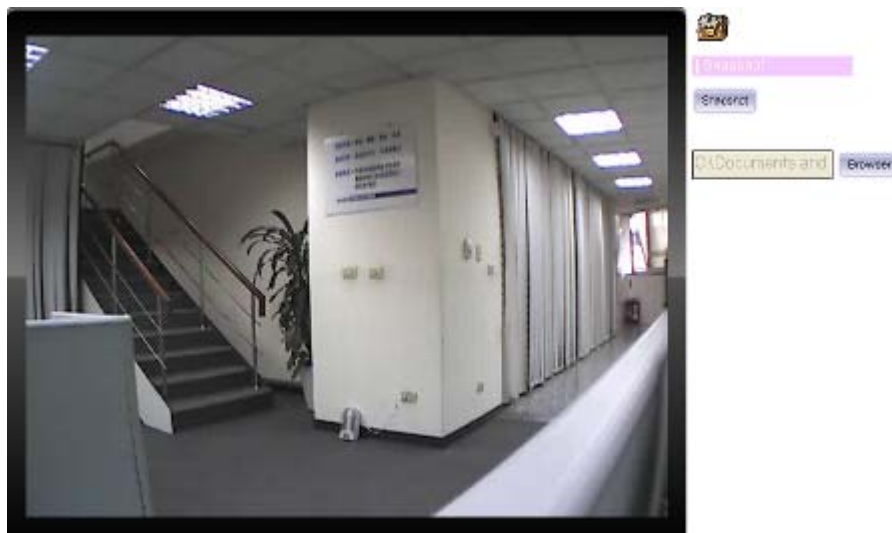
Click **Digital Zoom** to activate this function as above. User can drag or scale the box over the video to adjust zoom ratio and position.



### 3.4.2 Snapshot

Click **Snapshot** to activate this function. Press **Snapshot** button to take a picture. The image file is saved as JPEG format into your local PC. Select **Browser**, the pop-up window to select the save path and file name prefix, select **OK** to continue.

If you like to retrieve the saved image, select the file to display the saved image by using any one of graph editing tools.



### 3.4.3 Record

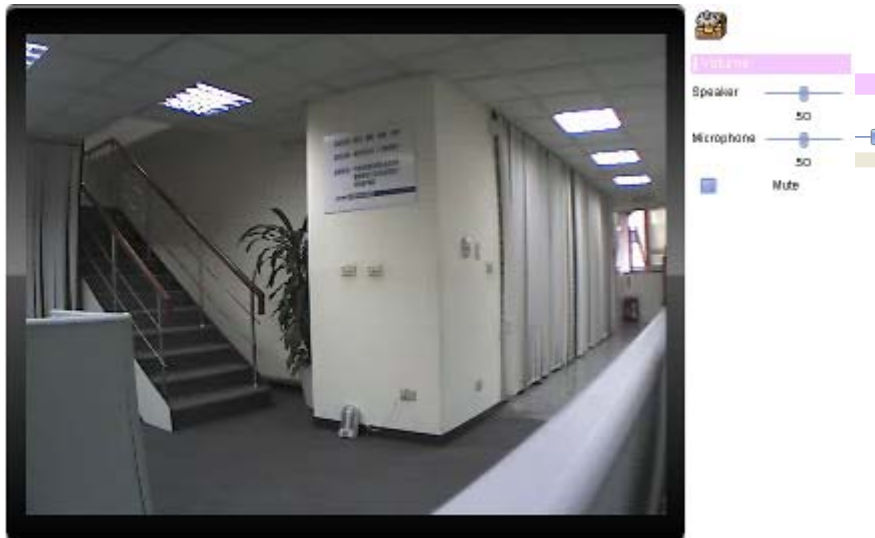
Click **Record** to activate this function. Press **Record** button to start recording. The video file is saved as ASF format into your local PC. While you want to stop it, press **Stop** to stop recording. Select **Browser**, the pop-up window to select the save path and file name prefix, select **OK** to continue.

After stop recording, list the files, this file is named as Video\_yyyymmddhhmmss.asf  
The ASF files can be display by the standard Windows Media Player, but it needs the DixectX 9.0 or later version to be installed.



### 3.4.4 Volume

Click Volume to activate this function. These have two control bars for speaker and microphone volume. Scroll this control bar to adjust the audio attribute. Check the volume mute will mute the speaker output.



### 3.4.5 About

Click **About** to show the ActiveX information



## 3.5 Network Configuration

Use this menu to configure the network to connect the device and the clients.

### 3.5.1 Network

This section provides the menu of connecting the device through Ethernet cable.

Network	IPv6	HTTPS	DDNS	PPPoE	Streaming	UPnP	Bonjour	ONVIF	IP Filter	IP Notification
<p>MAC Address: 00:30:4F:A2:62:3A</p> <p><input checked="" type="checkbox"/> Obtain IP address automatically (DHCP)</p> <p>IP Address: 192.168.1.26 <input type="button" value="Test"/></p> <p>Subnet Mask: 255.255.255.0</p> <p>Gateway: 192.168.1.1</p> <p><input type="checkbox"/> Obtain DNS from DHCP</p> <p>Primary DNS: 168.95.1.1</p> <p>Secondary DNS: 168.95.1.2</p> <p>HTTP Port: 80 (1 ~ 65535) <input type="button" value="Test"/></p>										

#### MAC address

Display the Ethernet MAC address of the device. Note that user cannot change it.

#### Obtain an IP address automatically (DHCP)

Enable this checked box when a DHCP server is installed on the network to issue IP address assignment. With this setting, the IP address is assigned automatically. If this device cannot get an IP address within limited tries, the device will assign a default IP address for 192.168.0.20.

If you do not select "Obtain an IP address automatically", then you need to enter these network parameters by yourself.

#### IP Address

This address is a unique numbers that identifies a computer or device on the WAN or LAN. These numbers are usually shown in groups



	separated by periods, for example: 192.168.0.200
<b>Subnet Mask</b>	Subnets allow network traffic between hosts to be separated based on the network's configuration. In IP networking, traffic takes the form of packets. IP subnets advance network security and performance to some level by organizing hosts into logical groups. Subnet masks contain four bytes and usually appear in the same "dotted decimal" data. For example, a very common subnet mask in its binary demonstration 11111111 11111111 11111111 00000000 will usually be shown in the corresponding, more readable form as 255.255.255.0.
<b>Gateway</b>	A gateway is a piece of software or hardware that passes information between networks. You'll see this term most often when you either log in to an Internet site or when you're transient email between different servers.
<b>Obtain DNS from DHCP</b>	Enable this checked box when a DHCP server is installed on the network and provide DNS service.
<b>Primary DNS</b>	When you send email or position a browser to an Internet domain such as xxxxx.com, the domain name system translates the names into IP addresses. The term refers to two things: the conventions for naming hosts and the way the names are control across the Internet.
<b>Secondary DNS</b>	The same function as DNS1. It is option not necessary
<b>HTTP Port</b>	<p>The device supports two HTTP ports. The first one is default port 80 and this port is fixed. This port is very useful for Intranet usage. The second HTTP port is changeable. Users could assign the second port number of http protocol, and the WAN users should follow the port number to login. If the http port is not assigned as 80, users have to add the port number in back of IP address. For example: <a href="http://192.168.0.20:8080">http://192.168.0.20:8080</a>.</p> <p>Therefore, the user can access the device by either <a href="http://xx.xx.xx.xx/">http://xx.xx.xx.xx/</a>, or <a href="http://xx.xx.xx.xx:xxxx/">http://xx.xx.xx.xx:xxxx/</a> to access the device.</p> <p>If multiple devices are installed on the LAN and also required to be accessed from the WAN, then the <b>HTTP Port</b> can be assigned as the virtual server port mapping to support multiple devices.</p>

**NOTE:** If you log in the camera as an ordinary user, setting function will be not available.  
If you log in the camera as the administrator, you can perform all the settings provided within the device.

When the configuration is finish, please click "**OK**" to save and enable the setting.

### 3.5.2 IPv6

Internet Protocol version 6 (IPv6) is called the "IP Next Generation" (IPng), which is designed to fix the shortcomings of IPv4, such as data security and maximum number of user addresses. It is backward compatible and thus expected to slowly replace IPv4, with the two existing side by side for many years.

Network	<b>IPv6</b>	HTTPS	DDNS	PPPoE	Streaming	UPnP	Bonjour	IP Filter	IP Notification
---------	-------------	-------	------	-------	-----------	------	---------	-----------	-----------------

IPv6

☐ Disable ☒ Enable

**IPv6**

To enable or disable the IPv6 function here.

### 3.5.3 HTTPS

HTTPS: Stands for Hypertext Transfer Protocol Secure

HTTPS is a combination of the Hypertext Transfer Protocol with the SSL/TLS protocol to provide encrypted communication and secure identification of a network web server. HTTPS connections are often used for sensitive transactions in corporate information systems. The main idea of HTTPS is to create a secure channel over an insecure network. This ensures reasonable protection from eavesdroppers and man-in-the-middle attacks, provided that adequate cipher suites are used and that the server certificate is verified and trusted.

Network	IPv6	HTTPS	DDNS	PPPoE	Streaming	UPnP	Bonjour	IP Filter	IP Notification
<div> <div>HTTPS</div> <div> <input type="radio"/> Disable           <input checked="" type="radio"/> Enable         </div> </div> <div> <div>Port</div> <div> <input type="text" value="443"/> (1 ~ 65535) <input type="button" value="Test"/> </div> </div>									

#### HTTPS

To enable or disable the HTTPS service here. Note that the HTTPS function of this device is not only encrypted the web content but also audio/video data.

#### Port

Choose the HTTPS port. The default value is 443.

### 3.5.4 DDNS server

Stands for Dynamic Domain Name Server

The device supports DDNS. If your device is connected to xDSL directly, you might need this feature. However, if your device is behind a NAT router, you will not need to enable this feature. Because DDNS allows the device to use an easier way to remember naming format rather than an IP address. The name of the domain is like the name of a person, and the IP address is like his phone number. On the Internet we have IP numbers for each host (computer, server, router, and so on), and we replace these IP numbers to easy remember names, which are organized into the domain name. As to xDSL environment, most of the users will use dynamic IP addresses. If users want to set up a web or a FTP server, then the Dynamic Domain Name Server is necessary. For more DDNS configuration, please consult your dealer.

Your Internet Service Provider (ISP) provides you at least one IP address which you use to connect to the Internet. The address you get may be static, meaning it never changes, or dynamic, meaning it's likely to change periodically. Just how often it changes, depends on your ISP. A dynamic IP address complicates remote access since you may not know what your current WAN IP address is when you want to access your network over the Internet. The solution to the dynamic IP address problem comes in the form of a dynamic DNS service.

The Internet uses DNS servers to lookup domain names and translates them into IP addresses. Domain names are just easy to remember aliases for IP addresses. A dynamic DNS service is unique because it provides a means of updating your IP address so that your listing will remain current when your IP address changes. There are several excellent DDNS services available on the Internet and best of all they're free to use. One such service you can use is [www.DynDNS.org](http://www.DynDNS.org). You'll need to register with the service and set up the domain name of your choice to begin using it. Please refer to the home page of the service for detailed instructions or refer to Appendix E for more information.

Network	IPv6	HTTPS	DDNS	PPPoE	Streaming	UPnP	Bonjour	IP Filter	IP Notification
<p>DDNS <input checked="" type="radio"/> Disable <input type="radio"/> Enable</p> <p>Server Name <input type="text" value="PLANET DDNS"/></p> <p>DDNS Host <input type="text" value="planetddns.com (6 ~ 16 Digits)"/></p> <p>User Name <input type="text" value="(6~16 Digits)"/></p> <p>Password <input type="text" value="(6~16 Digits)"/></p> <p>Internet Status Connected (210.61.134.92)</p>									

**DDNS** To enable or disable the DDNS service here.

**Server name** Choose the built-in DDNS server.

**DDNS Host** The domain name is applied of this device.

**User Name** The user name is used to log into DDNS.

**Password** The password is used to log into DDNS.

This model adds Planet easy DDNS that when this function enable will occur hostname with PLANET DDNS and end six of MAC automatically. User don't go to web of [www.planetddns.com](http://www.planetddns.com) apply new account.

Network	IPv6	HTTPS	DDNS	PPPoE	Streaming	UPnP	Bonjour	IP Filter	IP Notification
<p>DDNS <input checked="" type="radio"/> Disable <input type="radio"/> Enable</p> <p>Server Name <input type="text" value="PLANET Easy DDNS"/></p> <p>DDNS Host <input type="text" value="pla2623a.planetddns.com"/></p> <p>Internet Status Connected (210.61.134.92)</p>									

### 3.5.5 PPPoE

PPPoE: Stands for Point to Point Protocol over Ethernet

A standard builds on Ethernet and Point-to-Point network protocol. It allows Internet Camera connect to Internet with xDSL or cable connection; it can dial up your ISP and get a dynamic IP address. For more PPPoE and Internet configuration, please consult your ISP.

It can directly connect to the xDSL, however, it should be setup on a LAN environment to program

the PPPoE information first, and then connect to the xDSL modem. Power on again, then the device will dial on to the ISP connect to the WAN through the xDSL modem.

The procedures are

- Connect to a LAN by DHCP or Fixed IP
- Access the device, enter **Setting → Network → PPPoE** as below

Network	IPv6	HTTPS	DDNS	PPPoE	Streaming	UPnP	Bonjour	IP Filter	IP Notification
<div> <div>PPPoE</div> <div> <input checked="" type="radio"/> Disable           <input type="radio"/> Enable         </div> </div> <div> <div>User Name</div> <div><input type="text"/></div> <div>(&lt; 65 Digits)</div> </div> <div> <div>Password</div> <div><input type="password"/></div> <div>(&lt; 65 Digits)</div> </div> <div> <div>IP Address</div> <div><input type="text"/></div> <div>(readonly)</div> </div> <div> <div>Subnet Mask</div> <div><input type="text"/></div> <div>(readonly)</div> </div> <div> <div>Gateway</div> <div><input type="text"/></div> <div>(readonly)</div> </div> <div> <div>Status</div> <div><input type="text"/></div> <div>(readonly)</div> </div>									

<b>PPPoE</b>	To enable or disable the PPPoE service here.
<b>User Name</b>	Type the user name for the PPPoE service which is provided by ISP.
<b>Password</b>	Type the password for the PPPoE service which is provided by ISP.
<b>IP Address / Subnet Mask / Gateway</b>	Shows the IP information got from PPPoE server site.
<b>Status</b>	Shows the Status of PPPoE connection.

### 3.5.6 Streaming

RTSP is a streaming control protocol, and a starting point for negotiating transports such as RTP, multicast and Unicast, and for negotiating codes. RTSP can be considered a "remote control" for controlling the media stream delivered by a media server. RTSP servers typically use RTP as the protocol for the actual transport of audio/video data.

Network	IPv6	HTTPS	DDNS	PPPoE	Streaming	UPnP	Bonjour	IP Filter	IP Notification
<div> <div>RTSP Port</div> <div> <input type="text" value="554"/> <span>(554 ~ 65535)</span> <input type="button" value="Test"/> </div> </div> <div> <div>RTP Port</div> <div> <input type="text" value="50000"/> <span>~</span> <input type="text" value="50999"/> <span>(1024 ~ 65535)</span> </div> </div>									

#### RTSP Port

Choose the RTSP port. The RTSP protocol allows a connecting client to start a video stream. Enter the RTSP port number to use. The default value is 554.

#### RTP Port

Specify the range of transmission port number of video stream. The default range is 50000 to 50999. User can specify a number between 1024 and 65535.

#### NOTE

1. To use the 3GPP function, in addition to previous section, you might need more information or configuration to make this function work.
2. The camera must be set as Multi-profile mode, not Mega-pixel mode. Otherwise this device cannot serve 3GPP stream.
3. To use the 3GPP function, it strongly recommends installing the Networked Device with a public and fixed IP address without any firewall protection.
4. Port 554 is the default for RTSP service. However, sometimes, some service providers change this port number for some reasons. If so, user needs to change this port accordingly.

#### Dialing procedure

1. Choose a verified player (PacketVideo, QuickTime or Real player currently)
2. Use the following URL to access: **rtsp://host/mpeg4/media.3gp**  
Where host is the host name or IP address of the camera.

#### Compatible 3G mobile phone

Please contact your dealer to get the approved list of compatible 3G phone.

### 3.5.7 UPnP

UPnP is short for Universal Plug and Play, which is a networking architecture that provides compatibility among networking equipment, software, and peripherals. This device is an UPnP enabled Internet Camera. If your operating system is UPnP enabled, the device will automatically

be detected and a new icon will be added to “My Network Places.” If you do not want to use the UPnP functionality, it can be disabled

In addition, this device also provides UPnP IGD function for NAT traversal easily. Use NAT traversal when your device is located on an intranet (LAN) and you wish to make it available from the other (WAN) side of a NAT router. With NAT traversal properly configured, all HTTP traffic to an external HTTP port in the NAT router will be forwarded to the device.

Network	IPv6	HTTPS	DDNS	PPPoE	Streaming	UPnP	Bonjour	IP Filter	IP Notification
<p><b>UPnP</b> <input type="radio"/> Disable <input checked="" type="radio"/> Enable</p> <p><b>Friendly Name</b> <input type="text" value="ICA-4200V - 00304FA29270"/> (readonly)</p> <p><b>UPnP NAT Traversal</b> <input type="radio"/> Disable <input checked="" type="radio"/> Enable</p> <p><b>Port Range</b> <input type="text" value="32768"/> ~ <input type="text" value="65535"/> (1 ~ 65535)</p> <p><b>External IP Address</b> <input type="text" value="AddPortMapping(32768, 32768, 10.1.1.100) failed with cod"/> (readonly)</p>									

**UPnP** To enable or disable the UPnP service here.

**Friendly Name** Shows the friendly name of this device here.

**UPnP NAT Traversal** When enabled, the device will attempt to configure port mapping in a NAT router on your network, using UPnP™. Note that UPnP™ must be enabled in the NAT router first.

**Port Range** The port range will open in NAT router.

**External IP address** Show the IP address and port for WAN access through Internet. If NAT traversal is configured successfully, user can use this IP address and port to access this device.

### 3.5.8 Bonjour

The Bonjour service allows IP camera can be discovered with Apple Safari browser applied, once the option enable the IP camera will be show the Friendly Name in the Bonjour bookmarks menu of Safari browser.

Network	IPv6	HTTPS	DDNS	PPPoE	Streaming	UPnP	Bonjour	IP Filter	IP Notification
<p><b>Bonjour</b> <input type="radio"/> Disable <input checked="" type="radio"/> Enable</p> <p><b>Friendly Name</b> <input type="text" value="ICA-4200V - 00304FA29270"/> (readonly)</p>									



**Bonjour** To enable or disable the Bonjour service here.

**Friendly Name** Shows the friendly name of this device here.

### 3.5.9 IP Filter

You can enter different user's IP address which are allowing enter or denying by the device.

Network	IPv6	HTTPS	DDNS	PPPoE	Streaming	UPnP	Bonjour	<b>IP Filter</b>	IP Notification
---------	------	-------	------	-------	-----------	------	---------	------------------	-----------------

IP Filter ☒ Disable ☐ Enable

IP Filter Policy ☐ Deny ☒ Allow

Filter IP List

Filter IP	<input type="text"/>
<input type="button" value="Add"/> <input type="button" value="Delete"/> <input type="button" value="DeleteAll"/>	

**IP Filter** To enable or disable the IP filter function here.

**IP Filter Policy** Choose the filter policy where is denying or allowing.

### 3.5.10 IP Notification

In case the IP address is changed, system is able to send out an email to alert someone if the function is enabled.

Network	IPv6	HTTPS	DDNS	PPPoE	Streaming	UPnP	Bonjour	IP Filter	IP Notification
<p><b>SMTP Notification(email)</b> <input checked="" type="radio"/> Disable <input type="radio"/> Enable</p> <p><b>Send To</b> <input type="text"/> (&lt; 129 Digits)</p> <p><b>Subject</b> <input type="text" value="IP notification"/> (&lt; 65 Digits)</p> <p><b>TCP Notification</b> <input checked="" type="radio"/> Disable <input type="radio"/> Enable</p> <p><b>TCP Server</b> <input type="text"/> (&lt; 65 Digits)</p> <p><b>TCP Port</b> <input type="text"/> (1 ~ 65535)</p> <p><b>Message</b> <input type="text"/> (&lt; 65 Digits)</p> <p><b>HTTP Notification</b> <input checked="" type="radio"/> Disable <input type="radio"/> Enable</p> <p><b>URL</b> <input type="text" value="http://"/> (&lt; 61 Digits)</p> <p><b>HTTP Login Name</b> <input type="text"/> (&lt; 22 Digits)</p> <p><b>HTTP Login Password</b> <input type="text"/> (&lt; 22 Digits)</p> <p><b>Proxy Address</b> <input type="text"/> (&lt; 129 Digits)</p> <p><b>Proxy Port</b> <input type="text"/> (1 ~ 65535)</p> <p><b>Proxy Login Name</b> <input type="text"/> (&lt; 22 Digits)</p>									

#### SMTP Notification (e-mail)

If enable this function, then the “**Send to**” and “**Subject**” field need to be filled.

#### Send To

Type the receiver's e-mail address. This address is used for reply mail.

#### Subject

Type the subject/title of the E-mail.

#### TCP Notification

If enable this function, then the “**TCP Server**”, “**TCP Port**”, and “**Message**” fields need to be filled.

#### TCP Server

Type the server name or the IP address of the TCP server.

#### TCP Port

Set port number of TCP server.

#### Message

The message will be sent to FTP server.

#### HTTP Notification

If enable this function, then the fields below need to be filled.

#### URL

Type the server name or the IP address of the HTTP server

#### HTTP Login name

Type the user name for the HTTP server.

#### HTTP Login Password

Type the password for the HTTP server.

#### Proxy Address

Type the server name or the IP address of the HTTP Proxy.

<b>Proxy Port</b>	Set port number of Proxy.
<b>Proxy Login name</b>	Type the user name for the HTTP Proxy.
<b>Proxy Login Password</b>	Type the password for the HTTP Proxy.
<b>Custom parameter</b>	User can set specific parameters to HTTP server.
<b>Message</b>	The message will be sent to HTTP server.

## 3.6 Camera Configuration

Use this menu to set the function of the camera of Internet Camera

### 3.6.1 Picture

Picture
Privacy Mask
PTZ Setting
Preset Setting
Tour Setting

Rotation
Mirror + Vertical Flip

White Balance
Auto

Iris/Exposure Control
Auto Iris
Calibrate

Maximum Exposure Time
1/30 S

Power Frequency
50Hz 60Hz

Exposure Value
50 (0 ~ 100)

Color Level
50 (0 ~ 100)

Hue
50 (0 ~ 100)

Brightness
50 (0 ~ 100)

Contrast
50 (0 ~ 100)

Sharpness
50 (0 ~ 100)

Local video output
Disable Enable

ICR
Photo Sensor Manual

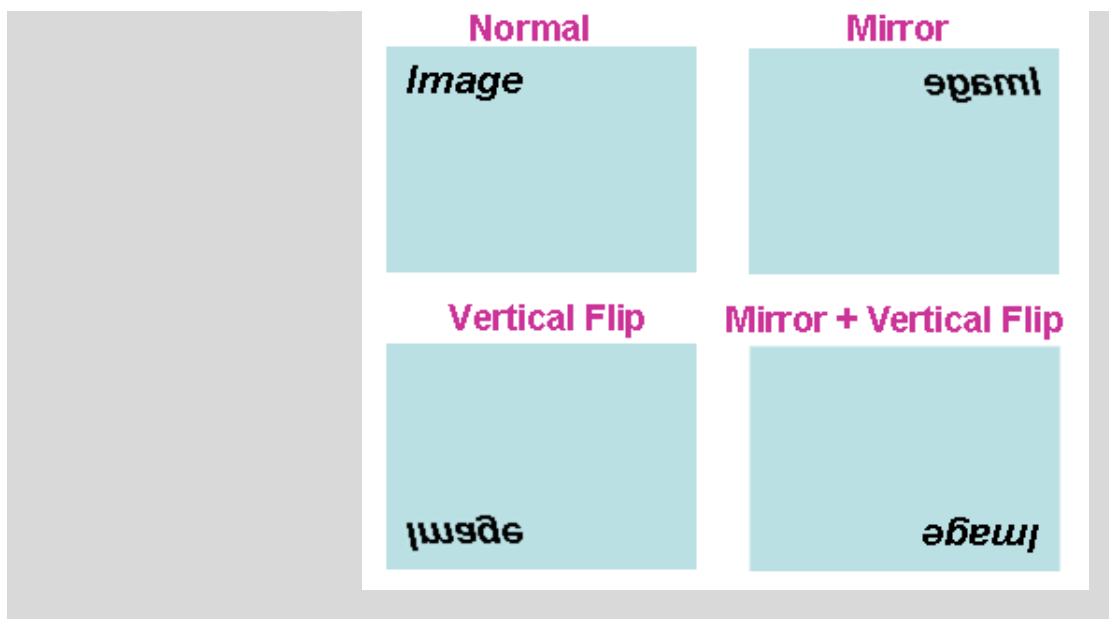
BLC
Off On

3D De-Noise
Manual Auto

2013-02-07 04:47:13 ICA-4200V

OK
Cancel

<b>Rotation</b>	Turn the “ <b>Mirror</b> ” and “ <b>Vertical Flip</b> ” On or OFF. The image will be overturned as below.
-----------------	---



#### White Balance

Auto: will adjust the white balance automatically.

Hold: will hold the white balance.

#### Iris / Exposure Control

**Auto Exposure:** will adjust the internal gain automatically.

**Hold Exposure:** will hold the internal gain.

##### Auto Iris:

This Camera is built-in a DC-Iris lens. User can choose the Iris control mode from "Auto" or "Off". In case, the "Auto" mode is selected, the Camera will control DC Iris automatically. On the hand, if the "Off" mode is selected, the Camera will open the lens Iris to maximize.

Sometimes, the Auto Iris may work abnormally under some environments. In this case, user can click "Calibrate" button to adjust Auto Iris function again.

##### Outdoor:

If the camera is installed in outdoor, then shall enable this option. Otherwise, disable it. The feature is used to improve auto-exposure performance under strong sunlight.

#### Maximum Exposure Time

User can limit the maximum exposure time of the image sensor. The larger value means longer exposure time possibly.

#### Power Frequency

Frequency of power line: 50 or 60Hz

#### Exposure Value

Exposure value is AE target value. This value is to adjust the integration, analog gain and digital gain to achieve the target

brightness value (Exposure Value).

This value is dependent to “Auto Exposure” only

<b>Color Level</b>	Large value will be colorful.
<b>Hue</b>	Change the value will result to color tuning.
<b>Brightness</b>	Large value will brighten camera.
<b>Sharpness</b>	Large value will sharpen camera.
<b>Contrast</b>	Large value will contrast camera heavily.
<b>Local video output</b>	<p>Enable or disable video signal of BNC to a TV monitor. It's very useful to check view angle or focus during camera installation. However, disable this function will save power a lot. Suggest to disable it after camera installed</p>
<b>ICR</b>	<p>Use built-in photo sensor or manual to control ICR.</p> <p>In case user selects manual mode, there are 4 modes: Night (On), Day (Off), Auto or Schedule to control built-in IR LEDs. This function is very useful under low illumination environment even 0 Lux.</p> <p>In case the Auto mode is selected, user needs to specify 3 parameters in advance:</p> <p><b>Night Mode Threshold (0~10000):</b> this value set the threshold to turn on IR LED. It should be lower or equal to Day Mode Threshold.</p> <p><b>Day Mode Threshold (0~10000):</b> this value set the threshold to turn off IR LED. It should be higher or equal to Night Mode Threshold.</p> <p><b>Delay Time:</b> The delay time between LED ON/OFF switching.</p> <p><b>Note:</b> that Current Value is the current luminance from the captured video. It's a useful reference to set LED ON/OFF Threshold.</p>
<b>3D De-Noise</b>	3D De-Noise can remove or lower unwanted noise and preserve fine details and edges.
<b>WDR</b>	This function is to provide clear images even under back light circumstances. The higher “Strength” level will adjust contrast

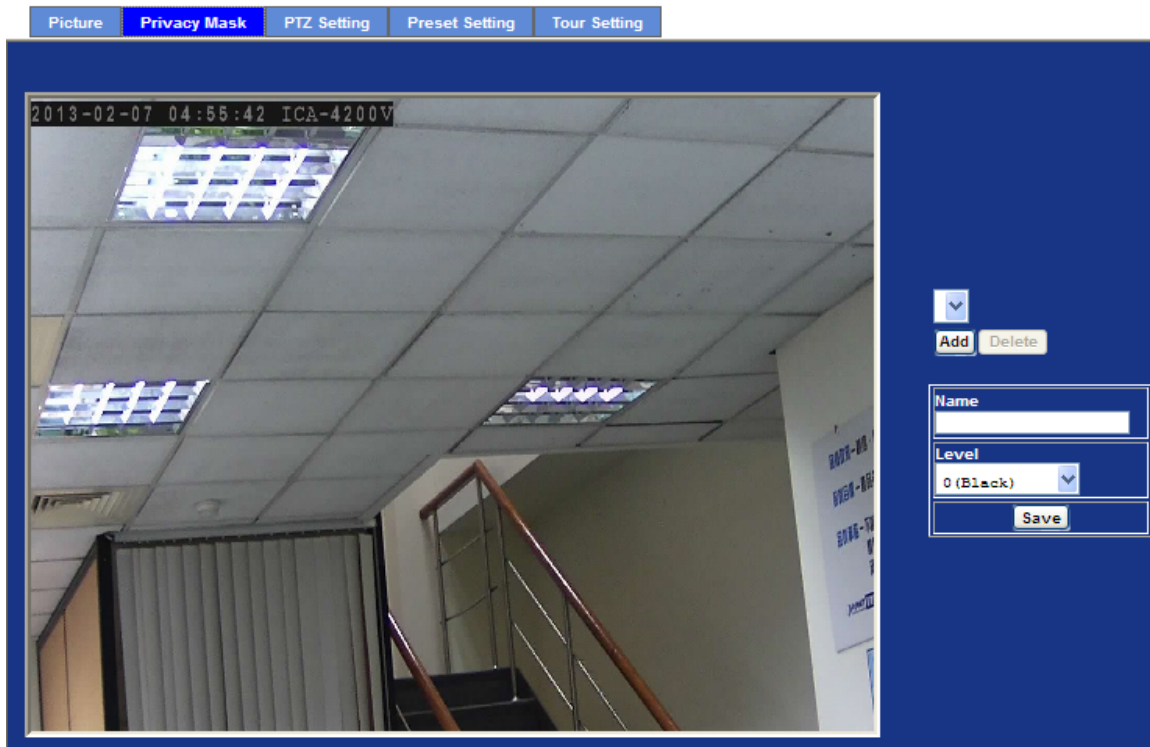
compensation stronger.

**Default Settings**

Restore to factory image settings.

### 3.6.2 Privacy Mask

Use this page to specify privacy mask window 1 to window 8 and set the name and gray level for selected window.



#### Add and Delete

To add or delete the privacy mask windows, user can specify up to 7 windows to mask the video captured by this device. By dragging mouse on the image, you can change the position and size of the selected window accordingly.

#### Name

Name of the specified privacy window

#### Level

To define the gray level of mask block. The smaller value will be darker.

### 3.6.3 PTZ Setting

This page allow user to modify the RS-485 interface according to the P/T scanner.

Picture
Privacy Mask
PTZ Setting
Preset Setting
Tour Setting

Camera Protocol

none

Camera Address

1

Baud rate

9600

#### Camera Protocol

This device can connect to a PTZ camera or speed dome camera and controls them thru RS-485 interface.

#### Camera Address

This is the camera ID set in PTZ camera or speed dome camera.

**Note** that please DO NOT changes the default value if unnecessary. If so, user needs to check and set value properly for both sides.

#### Baud rate

This is the communication speed between network module and P/T scanner.

**NOTE:** If need to change these parameters, user needs to check and set value properly for both, network module and P/T scanner.

### 3.6.4 Preset Setting

This page provides the edit tool to modify or delete the “Preset Setting” item by item.



Picture
Privacy Mask
PTZ Setting
**Preset Setting**
Tour Setting

Preset Number	Preset Name	Home Position

Preset List

Preset Number

Preset Name

Home Position
☒ Enable
☐ Disable

Modify
Delete

### 3.6.5 Tour Setting

Up to 64 positions can be preset, and the camera can be programming to move to the preset position sequentially.

Picture
Privacy Mask
PTZ Setting
Preset Setting
**Tour Setting**

Tour Number	Tour Name	Running	Sequence	Preset Name	Wait Time

Tour Name

Running
☒ Enable
☐ Disable

Add
Modify
Delete

Modify

#### Tour Name

The group name of the sequence of camera tour. The maximum number of camera tour is 16.

**Running** Enable or disable this camera tour.

**Preset**

Set the sequence of the tour. Maximum 16 points can be assigned. The selected preset position is added in the Sequence list from 1 to 16.

**Wait Time**

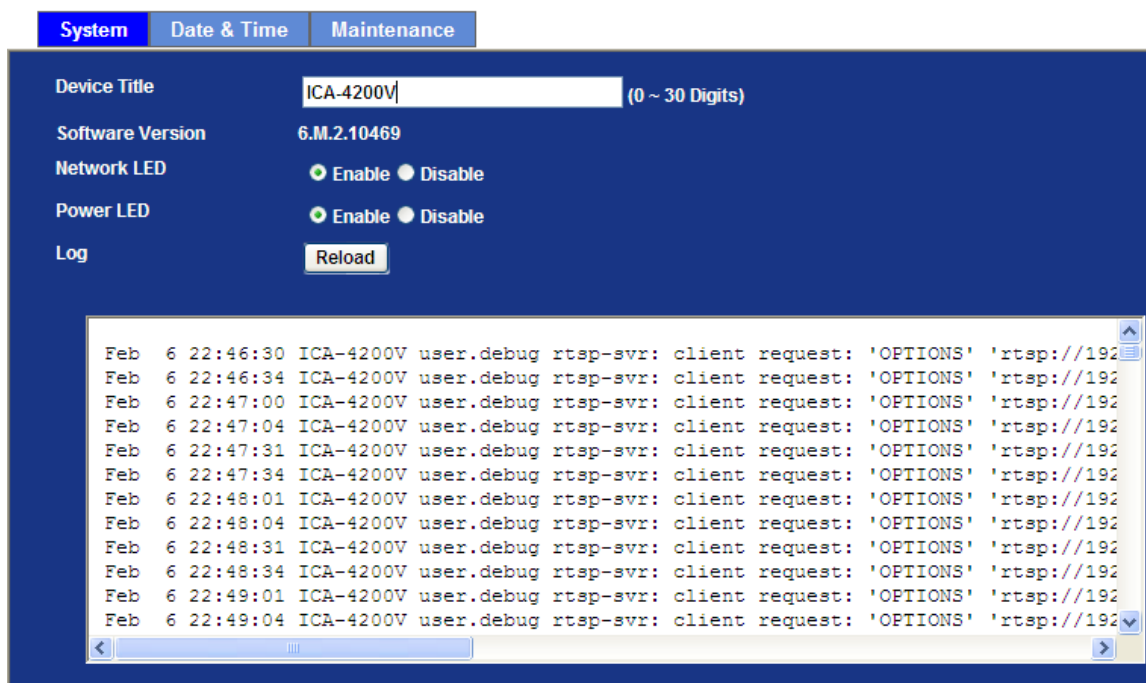
Type a period of time during which the camera is to stay at each preset point, between 0 to 36000 seconds.

**NOTE:** To use the camera tour function, user must preset some camera positions first. The maximum number of preset points is 64.

## 3.7 System

Use this menu to perform the principal settings of Internet Camera.

### 3.7.1 System



**Device title**

You can enter the name of this unit here. It's very useful to identify the specific device from multiple units.

**Software version**

This information shows the software version in the device.

**Network LED**

Switch the LED light of this Internet Camera on or off, that Network LEDs will stop working; in case you don't want other people know the

camera is transferring data.

**Power LED** Switch the LED light of this Internet Camera on or off.

**Log** User can check the system log information of the device, including the Main Info, Appended Info, Operator IP, and so on ...

**Reload** Click this button; user can refresh the log information of the device.

### 3.7.2 Date & Time

User can setup the time setting of Internet Camera, make it synchronized with PC or remote NTP server. Also, you may select the correct time zone of your country.



**Server Date & Time** Displays the date and time of the device

**PC Time** Displays the date and time of the connected PC

<b>Adjust</b>	<b>Synchronize with PC:</b>	Click this option to enable time synchronization with PC time
	<b>Manual setting:</b>	Click this option to set time and date manually
	<b>Synchronize with NTP:</b>	Click this option if you want to synchronize the device's date and time with those of time server called NTP server (Network Time Protocol)

**NTP server name** Type the host name or IP address or domain name of the NTP server.

<b>NTP sync. Interval</b>	Select an interval between 1 and 23 hours at which you want to adjust the device's time referring to NTP server
<b>Time zone</b>	Set the time difference from Greenwich Mean Time in the area where the device is installed.
<b>Daylight saving</b>	Check this item to enable daylight saving adjustment.
<b>Daylight Saving Start Time</b>	Sets up the date and time of daylight saving start time.
<b>Daylight Saving Stop Time</b>	Sets up the date and time of daylight saving stop time.
<b>Daylight Saving Offset</b>	Sets up the date of daylight saving offset.

### 3.7.3 Maintenance

System
Date & Time
**Maintenance**

Default Settings (Including Network Setting)
Factory Default Settings

Default Settings (Excluding Network Setting)
Default Settings

Backup Setting
Backup Setting

Restore Setting
Browse...
Restore Setting
Reset

Firmware Upgrade
Browse...
Firmware Upgrade
Reset

System Restart
Restart

<b>Default Settings (Include the network setting)</b>	Recall the device hard factory default settings. Note that click this button will reset all device's parameters to the factory settings (including the IP address).
<b>Default Settings (Except the network setting)</b>	The unit is restarted and most current settings are reset to factory default values. This action will not reset the network setting.
<b>Backup Setting</b>	To take a backup of all of the parameters, click this button. If necessary, it will then be possible to return to the previous

settings, if settings are changed and there is unexpected behavior.

#### **Restore Setting**

Click the “Browse” button to locate the saved backup file and then click the “Restore Setting” button. The settings will be restored to the previous configuration.

#### **Firmware upgrade**

The device supports new firmware upgrade.

1. Close all other application programs which are not necessary for firmware update.
2. Make sure that only you access this device at this moment
3. Disable Motion Detection function.
4. Select “**Firmware name**”
5. Select the Firmware binary file.

**Note!!** That it must make sure that the Firmware only applies to this device, once update, it will be burned into FLASH ROM of system.

6. Once the firmware file was selected, select “Upgrade”.
7. The upgrade progress information will be displayed on the screen.
8. A message will be shown while the firmware upgraded. Once the upgrading process completed, the device will reboot the system automatically.
9. Please wait for 80 seconds, and then you can use PLANET IPWizard II to search the device again.

**Warning!!!** The download firmware procedure cannot be interrupted. If the power and/or network connection are broken during the download procedure, it might possibly cause serious damage to the device.

Please be aware that you should not turn off the power during updating the firmware and wait for finish message. Furthermore, do not try to upgrade new firmware if it's not necessary.

#### **System Restart**

The device is restarted without changing any of the settings.

## 3.8 Video

This device provides 2 modes of video profile. The first one is 720p mode which supports video resolution up to 2 Mega-pixel. The second one is 2Mega mode which supports video resolution up to 2 Mega-pixel. User only can select either 720p or 2Mega mode to operate the camera. Switching 720p and 2Mega mode, the device will take time to reboot system.

### 3.8.1 Common

Common	Overlay Image	Video Profile	ROI	AOI
<p><b>Video Profile</b></p> <p> <input type="radio"/> 720p Mode           <input checked="" type="radio"/> 2 MEGA Mode         </p> <p><b>Text Overlay Setting</b></p> <p>           Font Color <input type="text" value="797979"/> <input type="button" value="Set Color"/> <input type="button" value="Default Color"/> </p> <p>           Background Color <input type="text" value="101010"/> <input type="button" value="Set Color"/> <input type="button" value="Default Color"/> </p> <p>           Transparency <input type="text" value="0 (opacity)"/> </p> <p> <input checked="" type="checkbox"/> Include Date             <input checked="" type="radio"/> Predefined <input type="text" value="YYYY-MM-DD"/>   <input type="radio"/> Own <input type="text" value="%Y-%m-%d"/> (0 ~ 12 Digits)         </p> <p> <input checked="" type="checkbox"/> Include Time             <input checked="" type="radio"/> Predefined <input type="text" value="24h"/>   <input type="radio"/> Own <input type="text" value="%H:%M:%S"/> (0 ~ 12 Digits)         </p> <p> <input checked="" type="checkbox"/> Include Text             <input type="text" value="ICA-4200V"/> (0 ~ 20 Digits)         </p>				

#### Video Profile

User can only choose either 720p or 2Mega modes. 720p mode can serve streams up to 1280x720 resolutions maximum. On the other hand, 2 Mega modes, it can streams up to 1920x1080 resolution maximum.

#### Text Overlay Setting

There are some important information can be embedded into image, including date, time, and/or text.

### 3.8.2 Overlay Image

User can upload “**bmp**” format picture to IP cam

Common
Overlay Image
Video Profile
ROI
AOI

Upload Own Image
☐ Include overlay image
Image Overlay Setting

Browse...
Upload File
Reset

Coordinates
X  Y

File
<No overlay image>

Resolution

Chroma Key
Set Color
Default Color

Transparency

**Upload own image** Select your picture to upload

**Coordinates** Select the location of the picture

### 3.8.3 Video Profile

User can modify the detail parameter for each video profiles in this page.

Common
Overlay Image
Video Profile
ROI
AOI

Name	Video Type	Resolution	Rate Control	Quality	Bitrate	Max Frame Rate	GOP Control	ROI	Multicast
Profile1	h264/Baseline	1080p	EVBR	75	-	30	30	no	no
Profile2	h264/Baseline	1080p	EVBR	90	-	30	30	no	no
Profile3	mjpeg	1080p	VBR	80	-	30	1	no	no
Profile4	h264/Baseline	1280x720	EVBR	70	-	30	30	no	no
Profile5	mjpeg	1280x720	EVBR	80	-	30	30	no	no
Profile6	mjpeg	1280x720	VBR	90	-	10	1	no	no
Profile7	h264/Baseline	640x360	EVBR	70	-	30	30	no	no
Profile8	mjpeg	640x360	EVBR	90	-	30	30	no	no
Profile9	mjpeg	640x360	VBR	90	-	10	1	no	no
Profile10	h264/Baseline	320x180	EVBR	70	-	30	30	no	no

Name

Video Type

Resolution

ROI
☒ Yes ☒ No

Rate Control
Quality 
Max Bitrate  K bps 1024 ~ 15000

Max Frame Rate

GOP Control

Multicast
☒ Enable ☒ Disable

Multicast Video
IP Address  Port  (0 means auto, 1024 ~ 65534)

**Name** To assign a name to the selected profile.



<b>Video Type</b>	Video codec of the selected profile.
<b>Resolution</b>	Resolution of the selected profile.
<b>ROI</b>	Assign the selected profile as a ROI stream or not. (Only available for the profiles with max resolution)
<b>Rate Control</b>	<p>Defines the rate control method of this profile. There are four options: Constant Bit Rate (CBR), Variable Bit Rate (VBR), and Enhanced Variable Bit Rate (EVBV).</p> <p>For CBR, the video bit rate is between low to high bandwidth based on different resolutions. User can set the desired bit rate to match the limitation of bandwidth.</p> <p>For VBR, user should choose the quality level to set the video quality rather than bit rate. The quality level is between 1 and 100. The higher value can reach the better quality but of course will consume higher bandwidth.</p> <p>For EVBR, the video bitrates is based on normal VBR mode. However, the target bitrates can be increased to max target bitrates while lots of motion in video. The max target bitrates will keep a pre-defined time period and then back to normal VBR mode.</p>
<b>Max Frame Rate</b>	Defines the targeted frame rate of this profile. For example, set the frame rate to 15 fps, then the image will be updated for 15 frames per second. User can set the desired max frame rate versus video quality under the limited bandwidth.
<b>GOP Control</b>	Defines the Intra/Inter-frame (I/P) ratio of this profile. For example, set the GOP to 30, then the video stream will have one Intra-frame every 30 frames.
<b>Multicast</b>	Enable or disable the multicast function.
<b>Multicast Video</b>	IP address and port for multicast video streaming of the selected profile.
<b>Multicast Audio</b>	IP address and port for multicast audio streaming of the selected profile
<b>Time to live</b>	Time to live (TTL) is a mechanism that limits the lifespan of data in a computer or network. Once the prescribed event count or timespan has elapsed, data is discarded. TTL prevents a data packet from circulating indefinitely.

**Always Enable  
Multicast**

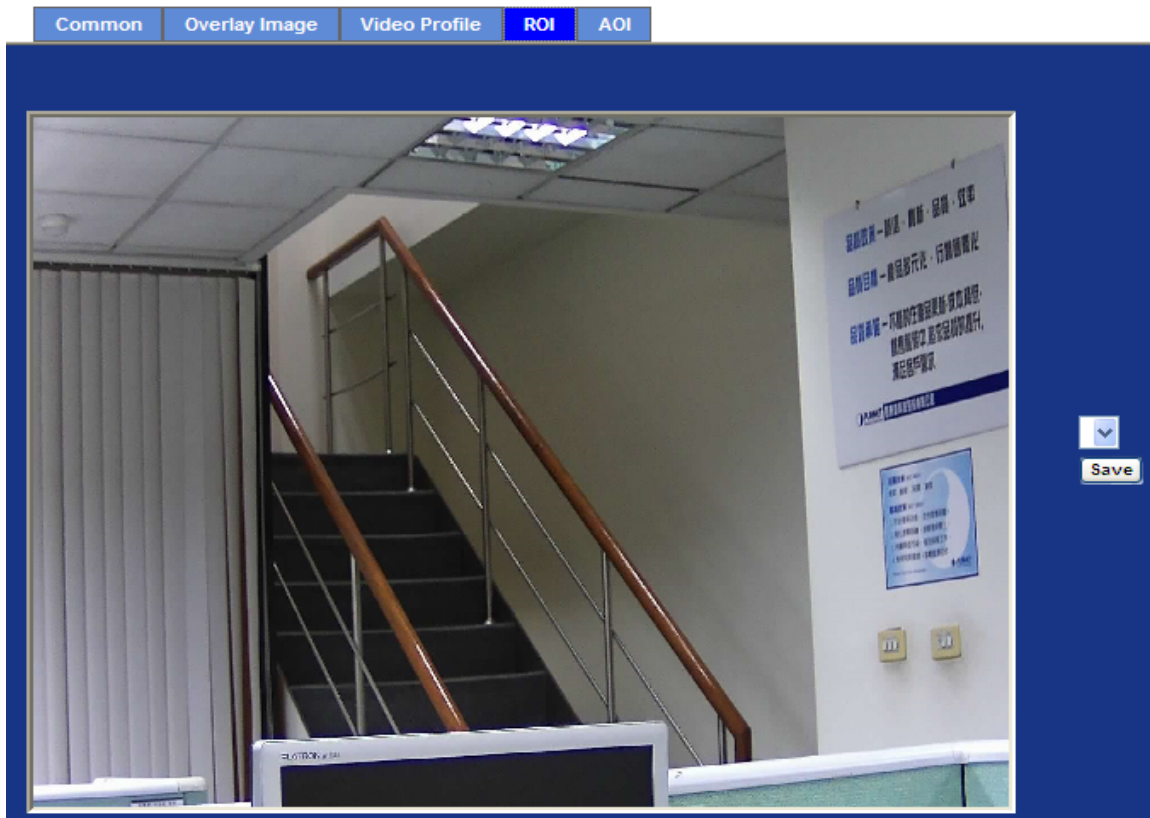
Multicast streaming is always enabled or by request

**Warning!!!**

To enable the multicast streaming, you shall make sure your Intranet does support multicast function. Otherwise, your Intranet may fall into network storm seriously.

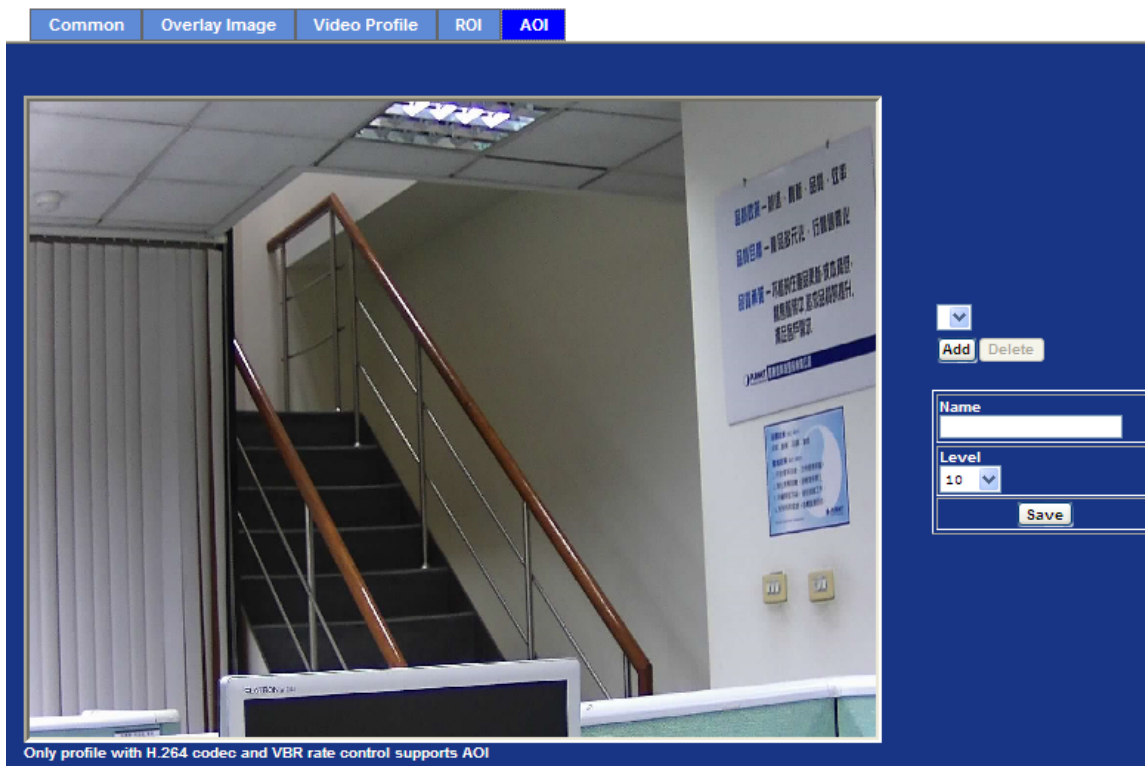
### 3.8.4 ROI

ROI means Region of Interest. Use this page to specify location of ROI windows. Only the maximum resolution profiles can be defined as ROI. In this model, the default ROI windows are profile 4 and 5.



### 3.8.5 AOI

AOI means Area of Interest. Use this page to specify location and size of AOI windows. Only the profiles with H.264 codec and VBR rate control can support AOI function. It enables a non-uniform distribution of the image quality between a selected region (the AOI) and the rest of the image (background).



#### **Add and Del**

To add or delete the AOI windows. User can specify up to 2 AOI windows to change the video quality in specified areas. By dragging mouse on the image, you can change the position and size of the selected AOI window accordingly

#### **Name**

Name of the specified AOI window.

#### **Level**

Adjust the video quality of specified AOI window. The higher value will be better video quality.

## **3.9 Audio Configuration**

It's M-JPEG mode in this profile.

Setting

Audio

☐ Disable
 ☒ Enable

Audio Type

g726

Audio Mode

☒ Simplex
 ☐ Full duplex

Input Gain

80

Output Gain

80

Speaker Out

☐ Disable
 ☒ Enable

<b>Audio</b>	To enable or disable audio function.
<b>Audio type</b>	To select G711 or G726 for <i>audio</i> coding.
<b>Audio Mode:</b>	To select Simplex or Full duplex (2-way audio) mode.
<b>Input Gain:</b>	To adjust gain of input audio.
<b>Output Gain:</b>	To adjust gain of output audio.
<b>Speaker Our</b>	To enable or disable speaker function.

### 3.10 User Privilege Access Configuration

Use this menu to set the user names and password of the Administrator and up to 10 users, and access right of each user.

Setting

Viewer Login ☒ Anonymous ☐ Only users in database

User Name	Access Right	PTZ Control
admin	administrator	yes
test	viewer	no
support	administrator	no

User List	
User Name	<input type="text"/> (1 ~ 20 Digits)
Password	<input type="password"/> (0 ~ 20 Digits)
Verify Password	<input type="password"/> (0 ~ 20 Digits)
Access Right	<input checked="" type="radio"/> Administrator <input type="radio"/> Viewer
PTZ Control	<input type="radio"/> Enable <input checked="" type="radio"/> Disable
<input type="button" value="Add"/> <input type="button" value="Modify"/> <input type="button" value="Delete"/>	

#### Viewer Login

Select "Anonymous" to allow any one viewing the video once connected. Otherwise, only users in database can view the video after login.

#### Access Right

Administrator can access every function in this device. However, Viewers only can view the video and access limited function.

#### PTZ Control

Authorize this user to control PTZ function or not.

#### Add, Modify, and Delete of Users account

Manage the user's account of viewer user.

## 3.11 Protocol

Use this menu to select enable or disable ONVIF, also setup SNMP configuration.

### 3.11.1 ONVIF

ONVIF is a global and open industry forum with the goal to facilitate the development and use of a global open standard for the interface of physical IP-based security products. Or in other words, to create a standard for how IP products within video surveillance and other physical security areas can communicate with each other.

ONVIF

SNMP

ONVIF

☐ Disable
☒ Enable

☒ V1.0
☐ V1.01/V1.02/V2.0/V2.1/V2.2

**ONVIF** To enable or disable the ONVIF interface here.

**Version** Currently, the V1.0 or V1.01/1.02/V2.0/V2.1.1 is available.

### 3.11.2 SNMP

SNMP provides a simple framework for administering networked hardware. To manage the IP camera, you have to prepare a MIB browser or similar tools first. SNMPv1 and SNMPv2c can be enabled simultaneously.

ONVIF

SNMP

SNMP v1

☐ Disable
☒ Enable

SNMP v2c

☒ Disable
☐ Enable

Read community

(< 33 Digits)

Write community

(< 33 Digits)

Traps

☐ Disable
☒ Enable

Trap address

(< 257 Digits)

Trap community

(< 33 Digits)

Available traps

☒ Cold start
☐ Warm start
☐ Link up
☐ Authentication failed

**SNMP v1** To enable or disable the SNMP v1 function here.

**SNMP v2c** To enable or disable the SNMP v2c function here.

**Read community** The term "Community name" in SNMPv1 and SNMPv2c can be roughly regarded as key. The person who has the community name has the authority to read or edit the information of IP camera via SNMP.

**Write community**

**Traps** Trap is a mechanism that allows the managed device to send messages to manager instead of waiting passively for polling

from the manager.

<b>Trap address</b>	The IP address of SNMP traps station.
<b>Trap community</b>	Trap Community means the community that can receive the trap message.
<b>Available traps</b>	The camera reboots.
<b>Cold start</b>	
<b>Available traps</b>	The camera starts up
<b>Warm start</b>	
<b>Available traps</b>	The camera connected network.
<b>Link up</b>	
<b>Available traps</b>	When content of read community is wrong, MIB browser connecting to camera will appear trap message.
<b>Authentication failed</b>	

## 3.12 Mail Configuration

You may setup SMTP mail parameters for further operation of Event Schedule. That's, if users want to send the alarm message out, it will need to configure parameters here and also add at least one event schedule to enable event triggering.

Setting

SMTP Server	mail.planet.com.tw (< 129 Digits) <input type="button" value="Test"/>
SMTP Port	25 (1 ~ 65535)
SSL	<input checked="" type="radio"/> Disable <input type="radio"/> Enable
SMTP Authentication	<input type="radio"/> Disable <input checked="" type="radio"/> Enable
Authentication User Name	admin (< 65 Digits)
Authentication Password	***** (< 22 Digits)
E-mail From	admin@planet.com.tw (< 129 Digits)
E-mail To	support@planet.com.tw (< 129 Digits)
E-mail Subject	message (< 65 Digits)



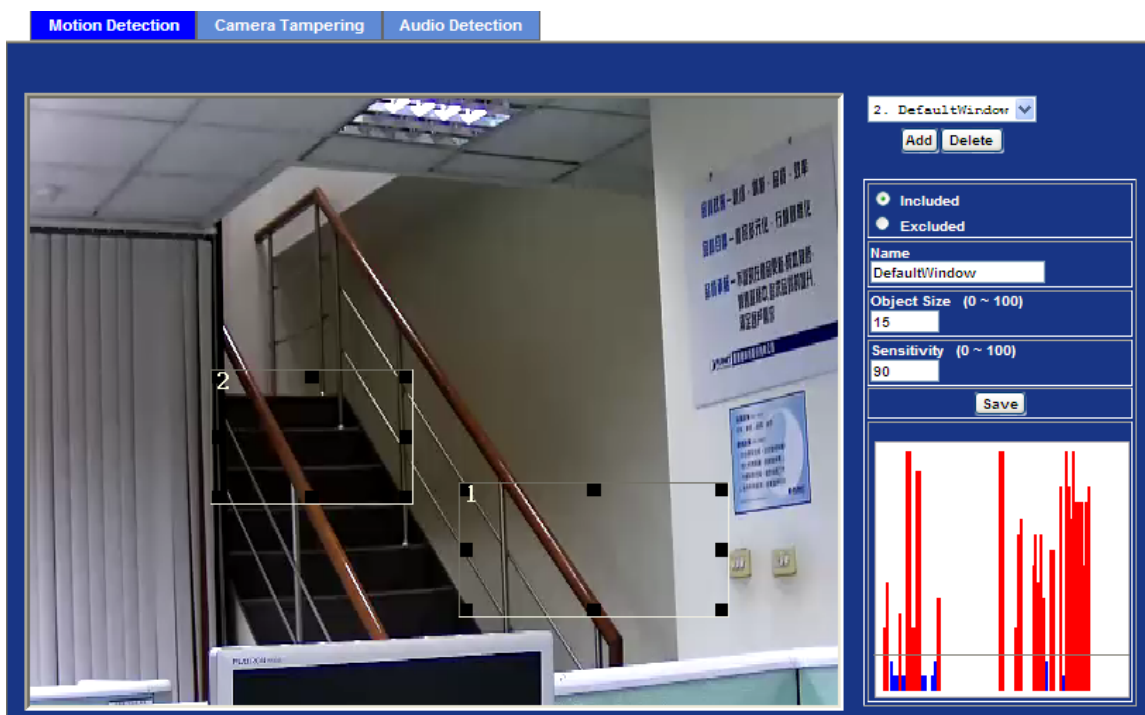
<b>SMTP Server</b>	Type the SMTP server name or the IP address of the SMTP server.
<b>Test</b>	Send a test mail to mail server to check this account is available or not.
<b>SMTP Port</b>	Set port number of SMTP service.
<b>SSL</b>	Enable SSL function or not.
<b>SMTP Authentication</b>	Select the authentication required when you send an e-mail. <b>Disable:</b> If no authentication is required when an e-mail is send. <b>Enable:</b> If authentication is required when an e-mail is sent.
<b>Authentication User Name</b>	Type the user name for the SMTP server if Authentication is Enabling.
<b>Authentication Password</b>	Type the password for the SMTP server if Authentication is Enabling.
<b>E-mail From</b>	Type the sender's E-mail address. This address is used for reply e-mails.
<b>E-mail To</b>	Type the receiver's e-mail address.
<b>E-mail Subject</b>	Type the subject/title of the e-mail.

## 3.13 Event Detection

Use this menu to specify motion detection window 1 to window 4 and set the conditions for detection while observing a captured image.

### 3.13.1 Motion Detection

Use this menu to specify motion detection window 1 to window 10 and set the conditions for detection while observing a captured image.



<b>Add and Delete</b>	To add or delete the motion windows. User can specify up to 4 Included and /or Excluded windows to monitor the video captured by this device. By dragging mouse on the image, you can change the position and size of the selected motion window accordingly.
<b>Included or Excluded Window</b>	<p>These windows can be specified as Included or Excluded type.</p> <p><b>Included:</b> Windows target specific areas within the whole video image</p> <p><b>Excluded:</b> Windows define areas within an Include window that should be ignored (areas outside Include windows are automatically ignored)</p>
<b>Name</b>	Name of the specified motion window.
<b>Object Size</b>	Defines the object size of motion detection. The higher object size will only larger objects trigger motion detection. The lower object size will even small objects trigger motion detection too. Generally speaking, the smaller size will be easier to trigger event.
<b>Sensitivity</b>	Defines the sensitivity value of motion detection. The higher value will be more sensitivity.

### 3.13.2 Camera Tampering

Camera tampering detection is a new intelligent functionality that further strengthens the benefit of Network Camera. When the camera is moved, partially obscured, severely defocused, covered or sprayed, an event can be triggered to send notifications, upload

images/files to remote server or email.

Motion Detection
Camera Tampering
Audio Detection

Minimum duration

10 ▾

Seconds

#### Minimum duration

Define the minimum triggered duration by camera tampering detection. The triggered duration less than target value will be ignored to filter false alarms.

### 3.13.3 Audio Detection

Audio detection alarm can be used as a complement to motion detection. Since audio detection can react to events in areas too dark for the video motion detection functionality to work properly. In addition, it can be used to detect activity in areas outside of the camera's view.

Motion Detection
Camera Tampering
**Audio Detection**

Audio Alarm Level

50
(0 ~ 100)

#### Audio Alarm Level

Define the threshold value of audio detection.

## 3.14 Storage Configuration

This page shows the status of attached SD card and Samba server. You may setup related parameters to manage the attached SD card or Samba server also.

### 3.14.1 SD Card

**SD Card**
SAMBAA Server

Disk ID
SD\_DISK
Mount
Unmount

Status

Free space
57% - 1126844KB
Reload
Format

Total size
1966080 KB

Status
OK

Full
No

Readonly
No

☐ Enable automatic disk cleanup

Remove recordings older than: 7 day(s)

Remove oldest recordings when disk is: 95 % full

☐ Lock disk

#### Disk ID

This name of SD card.

<b>Status</b>	This information of SD card.
<b>Enable automatic disk cleanup</b>	Delete old recorded files while the conditions are reached as below.
<b>Remove recordings order than</b>	Delete old files by days.
<b>Remove oldest recordings when disk is</b>	Delete old files by left capacity.
<b>Lock disk</b>	Avoid write data and delete at SD card

### 3.14.2 SAMBA Server

SD Card
SAMBA Server

Host
192.168.0.201
(1 ~ 63 Digits)
Share
share
(1 ~ 63 Digits)
User Name
test
(< 63 Digits)
Password
\*\*\*\*\*
(< 63 Digits)
Status
Online
Total size
13.34 GB
Free space
59% - 7.88 GB
SAMBA Server
Unmount

<b>Host</b>	Type the server name or the IP address of the SAMBA server.
<b>Share</b>	Set working directory path of SAMBA server.
<b>User Name</b>	Type the user name for the SAMBA server
<b>Password</b>	Type the password for the SAMBA server.

### 3.15 Continuous Recording

You may enable or disable continuous recording function here. Select SD card or Samba server for storage destination.

**Note:** When enable continuous recording that press restart will delete correct recording

Continuous Recording

Continuous Recording

☐ Disable
☒ Enable

Record File Type

Profile1 h264 / 1600x1200

Disk

☒ SD Card
☐ SAMBA Server

Path

PLANET-00304FA22E92 ( For example: Folder1/Folder2/Folder3 ) ( 1 ~ 63 Digits)

Restart

(Restarting will delete the current recording.)

## 3.16 Recording List

This page shows the files list information, files list inside the SD Card. User may reload file from SD card that play or remove the selected file.

Recording List Continuous Recording List

Date	File	Trigger by	Size
20120329	20120326_113301.avi	motion0Occur	2004 KB
20120330	20120326_115716.avi	motion0Occur	2068 KB
20120326	20120326_115732.avi	motion0Occur	2081 KB
	20120326_115740.avi	motion0Occur	2067 KB
	20120326_115749.avi	motion0Occur	2093 KB
	20120326_115755.avi	motion0Occur	2059 KB
	20120326_115932.avi	motion0Occur	2057 KB
	20120326_115943.avi	motion0Occur	2056 KB
	20120326_115951.avi	motion0Occur	2090 KB
	20120326_121234.avi	motion0Occur	2074 KB
	20120326_121329.avi	motion0Occur	2067 KB
	20120326_121411.avi	motion0Occur	2056 KB

Reload

Play Remove

This page shows the files list information, files list inside the SD Card or Samba server. User may reload file from SD card or Samba server that play or remove the selected file.

Recording List
Continuous Recording List

Disk: SD Card  
Path: PLANET-00304FA22E92

Date	File	Trigger by	Size
20120326	20120326_113156.avi	continuous	15506 KB
	20120326_113656.avi	continuous	17931 KB
	20120326_114156.avi	continuous	19834 KB
	20120326_114657.avi	continuous	19608 KB
	20120326_115157.avi	continuous	19150 KB
	20120326_115659.avi	continuous	50094 KB
	20120326_120200.avi	continuous	20253 KB
	20120326_120701.avi	continuous	19704 KB
	20120326_121201.avi	continuous	27162 KB

Reload
Play
Remove

## 3.17 Event Server Configuration

### 3.17.1 FTP Server

You may setup FTP parameters for further operation of Event Schedule. That's, if users want to send the alarm message to an FTP server, it will need to configure parameters here and also add at least one event schedule to enable event triggering as SMTP.

FTP Server
TCP Server
HTTP Server
SAMBA Server

Name	FTP Server	FTP Port	FTP Path
FTP	192.168.0.174	21	/anthony/test

Name
FTP
(< 22 Digits)

FTP Server
192.168.0.174
(< 65 Digits)
Test

FTP Login Name
admin
(< 22 Digits)

FTP Login Password
\*\*\*\*\*
(< 22 Digits)

FTP Port
21
(1 ~ 65535)

FTP Path
/admin/test
(< 65 Digits)

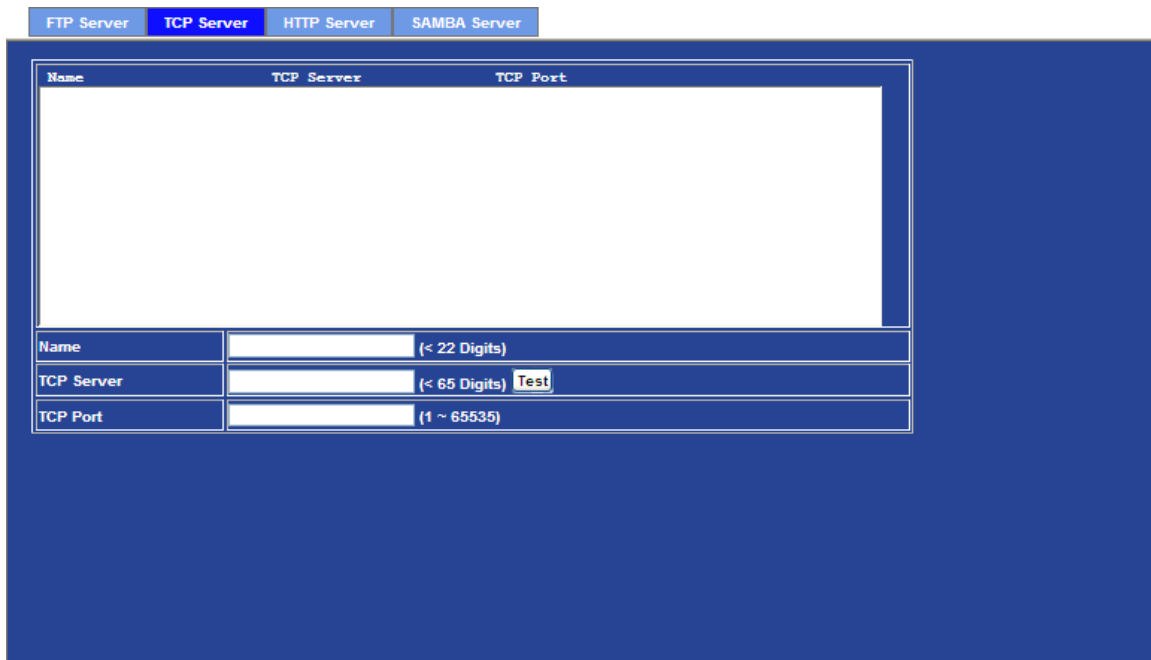
FTP Passive Mode
☒ Disable
☐ Enable



<b>Name</b>	User can specify multiple FTP paths as wish. Therefore, user needs to specify a name for each FTP setting.
<b>FTP Server</b>	Type the server name or the IP address of the FTP server.
<b>Test</b>	Check the FTP server whether this account is available or not.
<b>FTP Login name</b>	Type the user name for the FTP server.
<b>FTP Login Password</b>	Type the password for the FTP server.
<b>FTP Port</b>	Set port number of FTP service.
<b>FTP Path</b>	Set working directory path of FTP server.
<b>FTP Passive Mode</b>	Select passive or active mode connecting to FTP server.

### 3.17.2 TCP Server

In addition to send video file to FTP server, the device also can send event message to specified TCP server.



<b>Name</b>	User can specify multiple TCP servers as wish. Therefore, user needs to specify a name for each TCP server setting.
<b>TCP Server</b>	Type the server name or the IP address of the TCP server.
<b>TCP Port</b>	Set port number of TCP server.

### 3.17.3 HTTP Server

The device also can send event message to specified HTTP server.

FTP Server
TCP Server
**HTTP Server**
SAMB A Server

Name	HTTP Server	Proxy Address
Name	<input type="text"/> (< 22 Digits)	
URL	<input type="text" value="http://"/> (< 129 Digits) <input type="button" value="Test"/>	
HTTP Login Name	<input type="text"/> (< 22 Digits)	
HTTP Login Password	<input type="text"/> (< 22 Digits)	
Proxy Address	<input type="text"/> (< 129 Digits)	
Proxy Login Name	<input type="text"/> (< 22 Digits)	
Proxy Login Password	<input type="text"/> (< 22 Digits)	
Proxy Port	<input type="text"/> (1 ~ 65535)	

<b>Name</b>	User can specify multiple HTTP servers as wish. Therefore, user needs to specify a name for each HTTP server setting.
<b>URL</b>	Type the server name or the IP address of the HTTP server.
<b>Test</b>	Check the HTTP server whether it is available or not.
<b>HTTP Login name</b>	Type the user name for the HTTP server.
<b>HTTP Login Password</b>	Type the password for the HTTP server.
<b>Proxy Address</b>	Type the server name or the IP address of the HTTP Proxy.
<b>Proxy Login name</b>	Type the user name for the HTTP Proxy.
<b>Proxy Login Password</b>	Type the password for the HTTP Proxy.
<b>Proxy Port</b>	Set port number of Proxy.

### 3.17.4 SAMBA Server

The device also can send video stream to specified SAMBA server. Most of the time, the SAMBA server will be another PC or NAS server.

FTP Server
TCP Server
HTTP Server
**SAMBA Server**

Name	SAMBA Server	SAMBA Path
samba	192.168.0.201	share

Name	samba	(< 22 Digits)
SAMBA Server	192.168.0.201	(< 65 Digits) <b>Test</b>
SAMBA Login Name	test	(< 22 Digits)
SAMBA Login Password	*****	(< 22 Digits)
SAMBA Path	share	(< 65 Digits)

**Name** User can specify multiple HTTP servers as wish. Therefore, user needs to specify a name for each HTTP server setting.

**SAMBA Server** Type the server name or the IP address of the SAMBA server.

**Test** Check the SAMBA server whether this account is available or not.

**SAMBA Login name** Type the user name for the SAMBA server.

**SAMBA Login Password** Type the password for the SAMBA server.

**SAMBA Path** Set working directory path of SAMBA server.

## 3.18 Event Schedule Configuration

This menu is used to specify the schedule of Events and activate the some actions provided by this device.

### 3.18.1 Setting

Setting
Record
Port Status

Name	Enable	Type	Weekday	Start	Duration	Trigger by	Prefix	Action
Event1	yes	Event	1111111	0:0	24:0	x,x,1		IR

Name

Enable
☒ Yes ☐ No

Type
☒ Event Trigger ☐ Schedule Trigger, Interval 60 ( Seconds )

Enable Time
☒ Sun ☒ Mon ☒ Tue ☒ Wed ☒ Thu ☒ Fri ☒ Sat  
Start from 0 0 , Duration 24 0 ((max 168:00 hours )

Trigger by
☐ Sensor Change to active ☐ Motion Area DefaultWindow ☐ PIR Change to active

Record File Prefix
(0 ~ 20 Digits)

Action
☐ Voice Alert, Duration 5 ( 0~86400 Seconds )  
☐ Alarm Out, Duration 5 ( 0~86400 Seconds )  
☐ Send FTP  
☐ Send TCP  
☐ Send HTTP  
☐ Send E-Mail  
☐ White-Light LED Night Mode 0 ( 0~86400 Seconds )  
☐ Send SD

**Name** Name of the Event or Schedule.

**Enable** Enable or disable this Event or Schedule.

**Type** Schedule start with Event trigger or Schedule trigger.

**Enable Time** Define the feasible time slot.

**Trigger by** Select the triggered sources with event trigger.

**Record File Prefix** Define the prefix of recorded filename

**Action** Define the actions once event triggered.

### Example1.

Setting
Record
Port Status

Name	Enable	Type	Weekday	Start	Duration	Trigger by	Prefix	Action
Send to FTP	yes	Event	1111111	0:0	24:0	x,M0,1		FTP,IR

Name

Send to FTP

Enable

☒ Yes
☐ No

Type

☒ Event Trigger
☐ Schedule Trigger, Interval  ( Seconds)

Enable Time

☒ Sun
☒ Mon
☒ Tue
☒ Wed
☒ Thu
☒ Fri
☒ Sat

Start from  :  , Duration  :  ((max 168:00 hours) )

Trigger by

☐ Sensor 
☒ Motion Area 
☒ PIR

Record File Prefix

(0 ~ 20 Digits)

Action

☐ Voice Alert, Duration  ( 0~86400 Seconds )

☐ Alarm Out, Duration  ( 0~86400 Seconds )

☒ Send FTP

☐ Send TCP

☐ Send HTTP

☐ Send E-Mail

☒ White-Light LED   ( 0~86400 Seconds )

☐ Send SD

Send file to FTP server by motion triggered always:

1. Select event trigger
2. Enable time: start from 00:00 to 24:00 every day
3. Trigger by: Motion Area (Added in Object Detection page)
4. Action : Send FTP (Add in Event Server -> FTP Server page)

## Example2.

Setting Record Port Status

Name	Enable	Type	Weekday	Start	Duration	Trigger by Prefix	Action
Send to FTP	yes	Event	1111111	0:0	24:0	x,MD,1	FTP,IR

Name: Send to E-mail

Enable: ☒ Yes ☐ No

Type: ☒ Event Trigger ☐ Schedule Trigger, Interval 60 (Seconds)

Enable Time: ☒ Sun ☒ Mon ☒ Tue ☒ Wed ☒ Thu ☒ Fri ☒ Sat  
Start from 0 0, Duration 24 0 ((max 168:00 hours))

Trigger by: ☐ Sensor Change to active ☒ Motion Area DefaultWindow ☒ PIR Change to active

Record File Prefix: (0 ~ 20 Digits)

Action: ☐ Voice Alert, Duration (0~86400 Seconds)  
☐ Alarm Out, Duration (0~86400 Seconds)  
☐ Send FTP FTP  
☐ Send TCP  
☐ Send HTTP  
☒ Send E-Mail  
To email address support@planet.com.tw  
Subject Motion Detected!

Send file to E-Mail server by motion triggered from Friday 18:00 to Saturday 06:00

1. Select event trigger.
2. Enable time: start from Friday 18:00 and keep work in 12 hours, so it will stop on Saturday 06:00.
3. Trigger by : Motion Area (Added in Object Detection page)
4. Action : Send e-mail (Add in E-Mail page)
  - i. To email address: You need to input the receiver email address.
  - ii. Subject: You could specify the email subject.
  - iii. Message: You could specify the email content.

### Example3.

Setting Record Port Status

Name	Enable	Type	Weekday	Start	Duration	Trigger by Prefix	Action
Trigger_Voice_A...	yes	Schedule	0111110	18:0	12:0	x,x,x	VOICE,IR

Name: Trigger\_Voice\_Aalert

Enable: ☒ Yes ☐ No

Type: ☐ Event Trigger ☒ Schedule Trigger, Interval 600 (Seconds)

Enable Time: ☐ Sun ☒ Mon ☒ Tue ☒ Wed ☒ Thu ☒ Fri ☐ Sat  
 Start from 18:0, Duration 12:0 ((max 168:00 hours))

Trigger by: ☐ Sensor Change to active ☐ Motion Area ☐ PIR Change to active

Record File Prefix: (0 ~ 20 Digits)

Action: ☒ Voice Alert, Duration 10 (0~86400 Seconds)  
☐ Alarm Out, Duration (0~86400 Seconds)  
☐ Send FTP  
☐ Send TCP  
☐ Send HTTP  
☐ Send E-Mail  
☒ White-Light LED Night Mode 30 (0~86400 Seconds)  
☐ Send SD

Add Modify Delete

Enable Voice Alert every 10-minute during 18:00 to 24:00 from Monday to Friday.

1. Type: Select schedule trigger and interval is 10-minute.
2. Enable Time: Select Monday to Friday, and set start time from 18:00 and keep work in 6 hours.
3. Trigger by: You do not need to choose it, because this will be triggered every minute.
4. Action: Voice Alert.

### 3.18.2 Record Configuration

User can choose the type of record file for event or schedule application.



Setting
Record
Port Status

Record File Type

Record File Prefix
 (0 ~ 20 Digits)

Pre Trigger Duration
 (0 ~ 20 Seconds)

Best Effort Duration
 (1 ~ 60 Seconds)

Max File Size
 (256 ~ 3072 Bytes)

**Record File Type** Choose AVI or JPEG file format for record file.

**Record File Prefix** Define the prefix of recorded filename.

**Pre-Trigger Duration** Define the maximum duration of pre-alarm.

**Best Effort Duration** Define the best effort duration of post-alarm.

**Max File Size** Define the maximum buffer size of record file.

### 3.18.3 Port Status

User can check the status of digital input and output (DIDO).

Setting
Record
Port Status

Input Status
Output Status

Input 0: Inactive
Output 0: Inactive

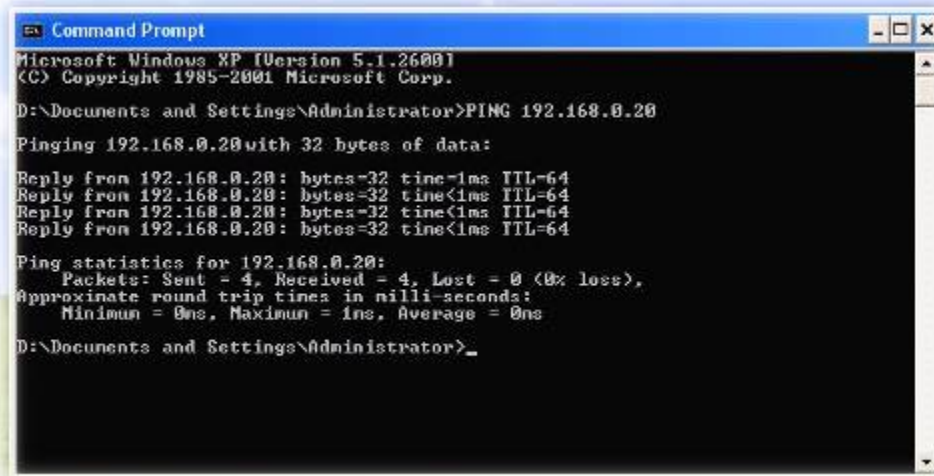
## Appendix A: PING IP Address

The PING (stands for Packet Internet Groper) command is used to detect whether a specific IP address is accessible by sending a packet to the specific address and waiting for a reply. It's also a very useful tool to confirm Internet Camera installed or if the IP address conflicts with any other devices over the network.

If you want to make sure the IP address of Internet Camera, utilize the PING command as follows:

- Start a DOS window.
- Type ping x.x.x.x, where x.x.x.x is the IP address of the Internet Camera.

The replies, as illustrated below, will provide an explanation to the problem.



```
Command Prompt
Microsoft Windows XP [Version 5.1.2600]
(C) Copyright 1985-2001 Microsoft Corp.

D:\Documents and Settings\Administrator>PING 192.168.0.20

Pinging 192.168.0.20 with 32 bytes of data:

Reply from 192.168.0.20: bytes=32 time<1ms TTL=64
Reply from 192.168.0.20: bytes=32 time<1ms TTL=64
Reply from 192.168.0.20: bytes=32 time<1ms TTL=64
Reply from 192.168.0.20: bytes=32 time<1ms TTL=64

Ping statistics for 192.168.0.20:
    Packets: Sent = 4, Received = 4, Lost = 0 (0% loss),
    Approximate round trip times in milli-seconds:
        Minimum = 0ms, Maximum = 1ms, Average = 0ms

D:\Documents and Settings\Administrator>_
```

If you want to detect any other devices conflicts with the IP address of Internet Camera, also can utilize the PING command but you must disconnect the Internet Camera from the network first.

---

## Appendix B: 3GPP Access

To use the 3GPP function, in addition to previous section, you might need more information or configuration to make this function work.

---

**Note** *That to use the 3GPP function, it strongly recommends to install the Networked Device with a public and fixed IP address without any firewall protection.*

---

### **RTSP Port:**

Port 554 is the default for RTSP service. However, sometimes, some service providers change this port number for some reasons. If so, user needs to change this port accordingly.

### **Dialing procedure:**

1. Choose a verified player (PacketVideo or Realplayer currently)
2. Use the following URL to access:

**rtsp://host/mpeg4/media.3gp**

Where *host* is the host name or IP address of the camera.

### **Compatible 3G mobile phone:**

Please contact your dealer to get the approved list of compatible 3G phone.

---

**Note** *Besides IP camera and 3G mobile phone. You will also need to make sure the ISP and telephone company has provided the 3GPP service to you.*

---

## Appendix C: Bandwidth and Video Size Estimation

The frame rate of video transmitted from the Internet Camera depends on connection bandwidth between client and server, video resolution, codec type, and quality setting of server. Here is a guideline to help you roughly estimate the bandwidth requirements for your Internet Camera.

The required bandwidth depends on content of video source. The slow motion video will produce smaller bit rate generally and fast motion will produce higher bit rate vice versa. Actual results generated by the Internet Camera may be varying.

Image Resolution	Average range of data sizes for JPEG mode	Average bit rate for MPEG4 mode	Average bit rate for H.264 mode
320 x 240	8 ~ 20k byte per frame	256kbps~768kbps @ 30fps	192kbps~512kbps @ 30fps
640 x 480	20 ~ 50K byte per frame	512kbps~3072kbps @ 30fps	384kbps~1536kbps @ 30fps
1920 x 1080	200 ~ 500k byte per frame	-	1536kbps~10000kbps @ 30fps
2048 x 1536	300 ~ 750k byte per frame	-	2048kbps~12000kbps @ 30fps

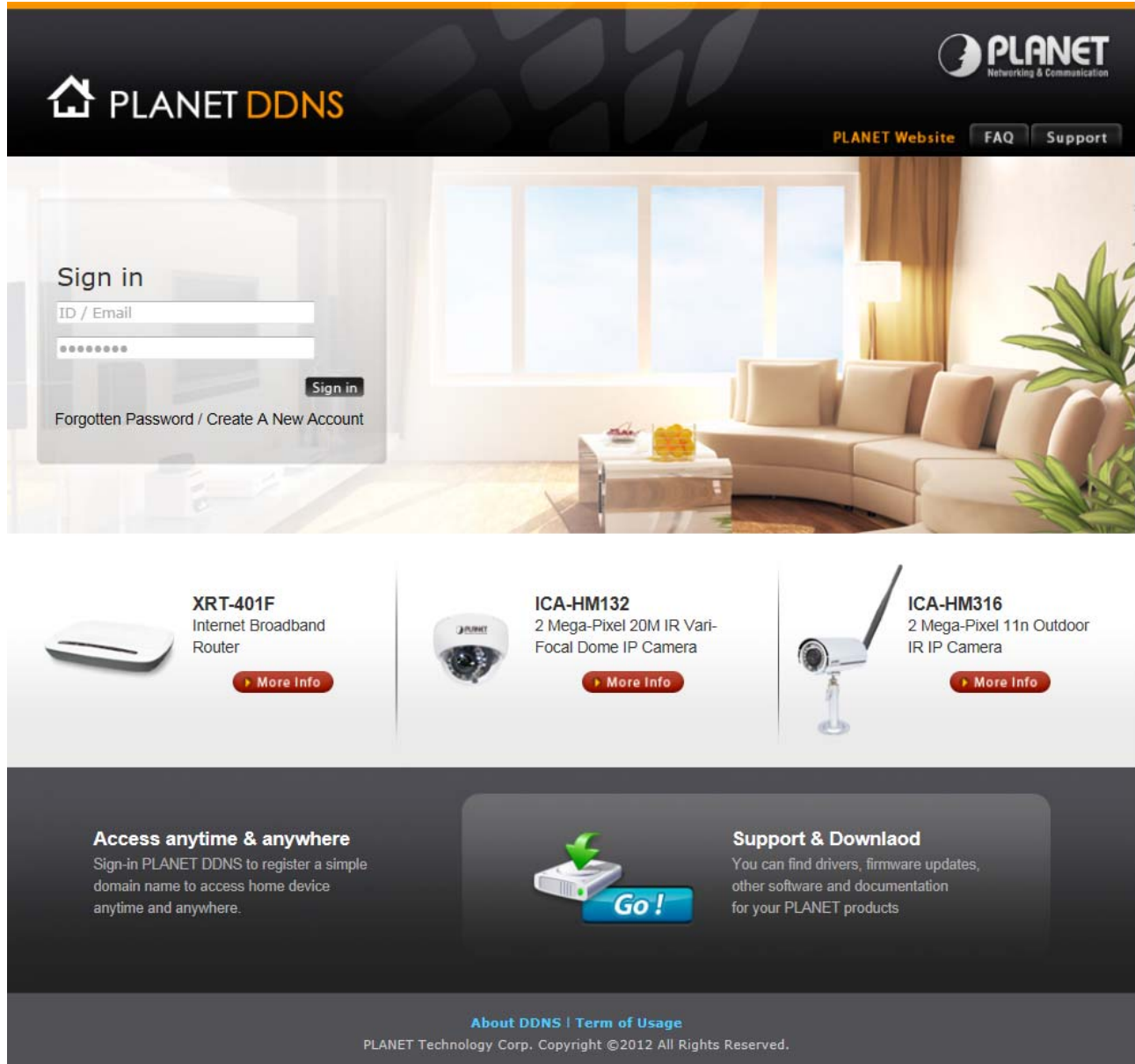
**NOTE:** Audio streaming also takes bandwidth around 32kbps. Some xDSL/Cable modem upload speeds could not even reach up to 128 kbps. Thus, you may not be able to receive good quality video while also streaming audio on a 128 kbps or lower connection. Even though the upload speed is more than 128kbps, for optimal video performance, disabling audio streaming will get better video performance.

## Appendix D: DDNS Application

### 1. Configure PLANET DDNS steps:

**Step 1:** Enable DDNS option through accessing web page of NAS

**Step 2.** Select on DDNS server provide, and register an account if you do not use yet.  
Let's take dyndns.org as an example. Register an account in <http://planetddns.com>



The screenshot shows the PLANET DDNS website. At the top, there's a dark header with the PLANET logo and navigation links for 'PLANET Website', 'FAQ', and 'Support'. Below the header is a large banner image of a modern living room. On the left side of the banner, there's a 'Sign in' form with fields for 'ID / Email' and a password, a 'Sign in' button, and links for 'Forgotten Password / Create A New Account'. Below the banner, there are three product cards: 'XRT-401F Internet Broadband Router', 'ICA-HM132 2 Mega-Pixel 20M IR Vari-Focal Dome IP Camera', and 'ICA-HM316 2 Mega-Pixel 11n Outdoor IR IP Camera'. Each card has a 'More Info' button. At the bottom, there's a dark footer section with three columns: 'Access anytime & anywhere' with a sign-in instruction, 'Support & Download' with a 'Go!' button and a list of available resources, and 'About DDNS | Term of Usage' with a copyright notice.

**PLANET DDNS**

PLANET Website FAQ Support

**Sign in**

ID / Email

Sign in

Forgotten Password / Create A New Account

**XRT-401F**  
Internet Broadband Router  
More Info

**ICA-HM132**  
2 Mega-Pixel 20M IR Vari-Focal Dome IP Camera  
More Info

**ICA-HM316**  
2 Mega-Pixel 11n Outdoor IR IP Camera  
More Info

**Access anytime & anywhere**  
Sign-in PLANET DDNS to register a simple domain name to access home device anytime and anywhere.

**Support & Download**  
You can find drivers, firmware updates, other software and documentation for your PLANET products

**Go!**

**About DDNS | Term of Usage**  
PLANET Technology Corp. Copyright ©2012 All Rights Reserved.

## Appendix E: Configure Port Forwarding Manually

The device can be used with a router. If the device wants to be accessed from the WAN, its IP address needs to be setup as fixed IP address, also the port forwarding or Virtual Server function of router needs to be setup. This device supports UPnP traversal function. Therefore, user could use this feature to configure port forwarding of NAT router first. However, if user needs to configure port forwarding manually, please follow the steps as below:

Manually installing the device with a router on your network is an easy 3–step procedure as following:

1. Assign a local/fixed IP address to your device
2. Access the Router with Your Web browser
3. Open/Configure Virtual Server Ports of Your Router

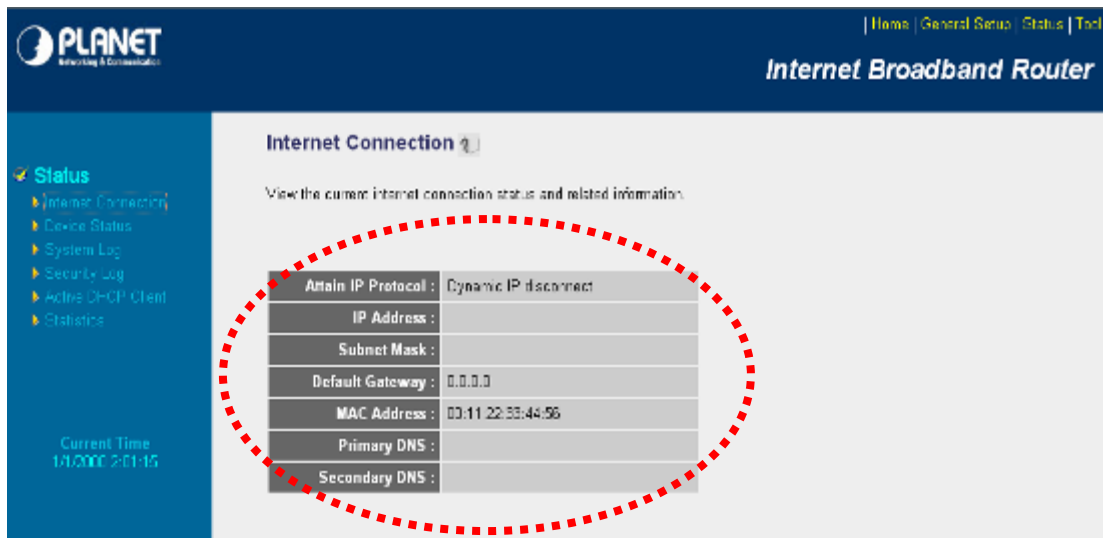
### 1. Assign a local/fixed IP address to your device

The device must be assigned a local and fixed IP Address that allows it to be recognized by the router. Manually setup the device with a fixed IP address, for example, *192.168.0.100*.

### 2. Access the Router with Your Web browser

The following steps generally apply to any router that you have on your network. The PLANET WNRT-620 is used as an example to clarify the configuration process. Configure the initial settings of the router by following the steps outlined in the router's **Quick Installation Guide**.

If you have cable or DSL service, you will most likely have a dynamically assigned WAN IP Address. 'Dynamic' means that your router's WAN IP address can change from time to time depending on your ISP. A dynamic WAN IP Address identifies your router on the public network and allows it to access the Internet. To find out what your router's WAN IP Address is, go to the **Status** screen on your router and locate the WAN information for your router. As shown on the following page the WAN IP Address will be listed. This will be the address that you will need to type in your web browser to view your camera over the Internet. Be sure to uncheck the **Reset IP address at next boot** button at the top of the screen after modifying the IP address. Failure to do so will reset the IP address when you restart your computer.



Your WAN IP Address will be listed here.

### 3. Open/set Virtual Server Ports to enable remote image viewing


The firewall security features built into the router and most routers prevent users from accessing the video from the device over the Internet. The router connects to the Internet over a series of numbered ports. The ports normally used by the device are blocked from access over the Internet. Therefore, these ports need to be made accessible over the Internet. This is accomplished using the **Virtual Server** function on the router. The Virtual Server ports used by the camera must be opened through the router for remote access to your camera.

Follow these steps to configure your router's Virtual Server settings

- Click **Enabled**.
- Enter a unique name for each entry.
- Select **Both** under **Protocol Type** (TCP and UDP)
- Enter your camera's local IP Address (e.g., **192.168.0.100**, for example) in the **Private IP** field.
- If you are using the default camera port settings, enter **80** into the **Public** and **Private Port** section, click **Add**.

A check mark appearing before the entry name will indicate that the ports are enabled.

**NOTE** Some ISPs block access to port 80. Be sure to check with your ISP so that you can open the appropriate ports accordingly. If your ISP does not pass traffic on port 80, you will need to change the port the camera uses from 80 to something else, such as 8080. Not all routers are the same, so refer to your user manual for specific instructions on how to open ports.



[Home](#) | [General Setup](#) | [Status](#) | [Tool](#)

## Internet Broadband Router

- System
- WAN
- LAN
- Wireless
- QoS
- ✓ NAT
  - ▶ Port Forwarding
  - ▶ Virtual Server
  - ▶ Special applications
  - ▶ UPnP Setting
  - ▶ ALG Settings
- Firewall

### Virtual Server ?

You can configure the Broadband router as a Virtual Server so that remote users accessing services such as the Web or FTP at your local site via Public IP Addresses can be automatically redirected to local servers configured with Private IP Addresses. In other words, depending on the requested service (TCP/UDP) port number, the Broadband router redirects the external service request to the appropriate internal server (located at one of your LAN's Private IP Address).

☒ Enable Virtual Server

Private IP	Private Port	Type	Public Port	WAN Port	Comment
<input type="text"/>	<input type="text"/>	<input type="text" value="Both"/>	<input type="text"/>	<input type="text" value="WAN1"/>	<input type="text"/>

Current Virtual Server Table:

Private IP	Private Port	Type	Public Port	WAN Port	Comment	Select
192.168.0.100	80	TCP+UDP	80	WAN1	ICA-HM210	<input type="checkbox"/>

Enter valid ports in the **Virtual Server** section of your router. Please make sure to check the box on this line to enable settings. Then the device can be access from WAN by the router's WAN IP Address.

By now, you have finished your entire PC configuration for this device.



## Appendix F: Power Line Frequency

COUNTRY	VOLTAGE	FREQUENCY	COMMENTS
Argentina	220V	50 Hz	*Neutral and line wires are reversed from that used in Australia and elsewhere.
Australia	230V*	50 Hz	*Outlets typically controlled by adjacent switch. Though <i>nominal</i> voltage has been officially changed to 230V, 240V is within tolerances and commonly found.
Austria	230V	50 Hz	
Brazil	110/220V*	60 Hz	*127V found in states of Bahia, Paran (including Curitiba), Rio de Janeiro, Paulo and Minas Gerais (though 220V may be found in some hotels). Other areas are 220V only, with the exception of Fortaleza (240V).
Canada	120V	60 Hz	
China	220V	50 Hz	
Finland	230V	50 Hz	
France	230V	50 Hz	
Germany	230V	50 Hz	
Hong Kong	220V*	50 Hz	
India	230V	50 Hz	
Italy	230V	50 Hz	
Japan	100V	50/60 Hz*	*Eastern Japan 50 Hz (Tokyo, Kawasaki, Sapporo, Yokohoma, and Sendai); Western Japan 60 Hz (Osaka, Kyoto, Nagoya, Hiroshima)
Malaysia	240V	50 Hz	
Netherlands	230V	50 Hz	
Portugal	230V	50 Hz	
Spain	230V	50 Hz	
Sweden	230V	50 Hz	
Switzerland	230V	50 Hz	
Taiwan	110V	60 Hz	
Thailand	220V	50 Hz	
United Kingdom	230V*	50 Hz	*Outlets typically controlled by adjacent switch. Though nominal voltage has been officially changed to 230V, 240V is within tolerances and commonly found.
United States of America	120V	60 Hz	

## Appendix G: Troubleshooting & Frequently Asked Questions

Features	
The video and audio codec is adopted in the device.	<p>The device utilizes H.264, MPEG-4 and M-JPEG triple compression to providing high quality images. Where H.264 and MPEG-4 are standards for video compression and M-JPEG is a standard for image compression.</p> <p>The audio codec is defined as AMR for 3GPP and G.711/G.726 for RTSP streaming.</p>
The maximum number of user accesses the device simultaneously.	<p>The maximum number of users is limited to 20. However, it also depends on the total bandwidth accessed to this device from clients. The maximum data throughput of the device is around 100~200 Mbps for UDP mode and 50Mbps for HTTP mode. Therefore, the actual number of connected clients is varying by streaming mode, settings of resolution, codec type, frame rate and bandwidth. Obviously, the performance of the each connected client will slow down when many users are logged on.</p>
The device can be used outdoors or not.	The device is weatherproof and can be use outdoors.
Install this device	
Status LED does not light up.	Check and confirm that the DC power adaptor, included in packaged, is used. Secure the power connector and re-power it on again.
The network cabling is required for the device.	The device uses Category 5 UTP cable allowing 10 and/or 100 Base-TX networking.
The device will be installed and work if a firewall exists on the network.	If a firewall exists on the network, port 80 is open for ordinary data communication. The HTTP port and RTSP port need to be opened on the firewall or NAT router.
The username and password for the first time or after factory default reset	<p>Username = <b>admin</b> and password = <b>admin</b>.</p> <p>Note that it's all case sensitivity.</p>
Forgot the username and password	<p>Follow the steps below.</p> <ol style="list-style-type: none"> <li>1. Restore the factory default setting by press pressing and holding down more than 5 seconds on the device.</li> <li>2. Reconfigure the device.</li> </ol>
Forgot the IP address of the device.	Check IP address of device by using the PLANET IP Wizard II program or by UPnP discovery or set the device to default by Reset button.

PLANET IP Wizard II program cannot find the device.	<ul style="list-style-type: none"> <li>• Re-power the device if cannot find the unit within 1 minutes.</li> <li>• Do not connect device over a router. PLANET IP Wizard II program cannot detect device over a router.</li> <li>• If IP address is not assigned to the PC which running PLANET IP Wizard II program, then PLANET IP Wizard II program cannot find device. Make sure that IP address is assigned to the PC properly.</li> <li>• Antivirus software on the PC might interfere with the setup program. Disable the firewall of the antivirus software during setting up this device.</li> <li>• Check the firewall setting of your PC or Notebook.</li> </ul>
Internet Explorer does not seem to work well with the device	Make sure that your Internet Explorer is version 6.0 or later. If you are experiencing problems, try upgrading to the latest version of Microsoft's Internet Explorer from the Microsoft webpage.
PLANET IP Wizard II program fails to save the network parameters.	Network may have trouble. Confirm the parameters and connections of the device.
<b>UPnP NAT Traversal</b>	
Cannot work with NAT router	Maybe NAT router does not support UPnP function. Please check user's manual of router and turn on UPnP function.
Some IP cameras are working but others are failed	Maybe too many IP cameras have been installed on the LAN, and then NAT router is out of resource to support more cameras. You could turn off and on NAT router to clear out of date information inside router.
<b>Access this device</b>	
Cannot access the login page and other web pages of the Internet Camera from Internet Explorer	<ul style="list-style-type: none"> <li>• Maybe the IP Address of the Internet Camera is already being used by another device or computer. To confirm this possible problem, disconnect the Internet Camera from the network first, and then run the PING utility to check it out.</li> <li>• Maybe due to the network cable. Try correcting your network cable and configuration. Test the network interface by connecting a local computer to the Internet Camera via a crossover cable.</li> <li>• Make sure the Internet connection and setting is ok.</li> <li>• Make sure enter the IP address of Internet Explorer is correct. If the Internet Camera has a dynamic address, it may have changed since you last checked it.</li> <li>• Network congestion may prevent the web page appearing quickly. Wait for a while.</li> </ul> <p>The IP address and Subnet Mask of the PC and Internet Camera must be in the same class of the private IP address on the LAN.</p> <ul style="list-style-type: none"> <li>• Make sure the http port used by the Internet Camera, default=80,</li> </ul>

	<p>is forward to the Internet Camera's private IP address.</p> <ul style="list-style-type: none"> <li>• The port number assigned in your Internet Camera might not be available via Internet. Check your ISP for available port.</li> <li>• The proxy server may prevent you from connecting directly to the Internet Camera, set up not to use the proxy server.</li> <li>• Confirm that Default Gateway address is correct.</li> <li>• The router needs Port Forwarding feature. Refer to your router's manual for details.</li> <li>• Packet Filtering of the router may prohibit access from an external network. Refer to your router's manual for details.</li> <li>• Access the Internet Camera from the Internet with the global IP address of the router and port number of Internet Camera.</li> <li>• Some routers reject the global IP address to access the Internet Camera on the same LAN. Access with the private IP address and correct port number of Internet Camera.</li> <li>• When you use DDNS, you need to set Default Gateway and DNS server address.</li> <li>• If it's not working after above procedure, reset Internet Camera to default setting and installed it again.</li> </ul>
Image or video does not appear in the main page.	<ul style="list-style-type: none"> <li>• The first time the PC connects to Internet Camera, a pop-up <b>Security Warning</b> window will appear to download ActiveX Controls. When using Windows XP, or Vista, log on with an appropriate account that is authorized to install applications.</li> <li>• Network congestion may prevent the Image screen from appearing quickly. You may choose lower resolution to reduce the required bandwidth.</li> </ul>
How to check the device's ActiveX is installed on your computer	<p>Go to C:\Windows\Downloaded Program Files and check to see if there is an entry for the file "<b>IPCamera Control</b>". The status column should show "Installed". If the file is not listed, make sure your Security Settings in Internet Explorer are configured properly and then try reloading the device's home page. Most likely, the ActiveX control did not download and install correctly. Check your Internet Explorer security settings and then close and restart Internet Explorer. Try to browse and log in again.</p>
Internet Explorer displays the following message: "Your current security settings prohibit downloading ActiveX controls".	<p>Setup the IE security settings or configure the individual settings to allow downloading and scripting of ActiveX controls.</p>
The device work locally but not externally.	<ul style="list-style-type: none"> <li>• Might be caused from the firewall protection. Check the Internet firewall with your system or network administrator. The firewall may need to have some settings changed in order for the device to be accessible outside your LAN.</li> <li>• Make sure that the device isn't conflicting with any other web</li> </ul>

	<p>server running on your LAN.</p> <ul style="list-style-type: none"> <li>• Check the configuration of the router settings allow the device to be accessed outside your local LAN.</li> <li>• Check the bandwidth of Internet connection. If the Internet bandwidth is lower than target bit rate, the video streaming will not work correctly.</li> </ul>
The unreadable characters are displayed.	Use the operating system of the selected language. Set the Encoding or the Character Set of the selected language on the Internet Explorer.
Frame rate is slower than the setting.	<ul style="list-style-type: none"> <li>• The traffic of the network and the object of the image affect the frame rate. The network congestion causes frame rate slower than the setting.</li> <li>• Check the bandwidth of Internet connection. If the Internet bandwidth is lower than target bit rate, the video streaming will not work correctly.</li> <li>• Ethernet switching hub can smooth the frame rate.</li> </ul>
Blank screen or very slow video when audio is enabled.	<ul style="list-style-type: none"> <li>• Your connection to the device does not have enough bandwidth to support a higher frame rate for the streamed image size. Try reducing the video streaming size to 160x120 or 320x240 and/or disabling audio.</li> <li>• Audio will consume 32 kbps. Disable audio to improve video. Your Internet connection may not have enough bandwidth to support streaming audio from the device.</li> </ul>
Image Transfer on e-mail or FTP does not work.	<ul style="list-style-type: none"> <li>• Default Gateway and DNS server address should be set up correctly.</li> <li>• If FTP does not work properly, ask your ISP or network administrator about the transferring mode of FTP server.</li> </ul>
Pan/Tilt does not work. (including Click to Center and Preset Positioning)	<ul style="list-style-type: none"> <li>• Click "<b>Refresh</b>" on the Internet Explorer when the communication stops with the device. The image will refresh.</li> <li>• Other clients may be operating Pan/Tilt.</li> <li>• Pan/Tilt operation has reached the end of corner.</li> </ul>
Pan/Tilt does not work smoothly.	There may be a slight delay when you are using the Pan/Tilt feature in conjunction with streaming audio and video. If you find that there is a significant delay while panning or tilting the camera, try disabling the audio streaming and/or reducing the video streaming size.
<b>Video quality of the device</b>	
The focus on the Camera is bad.	The lens is dirty or dust is attached. Fingerprints, dust, stain, etc. on the lens can degrade the image quality.
The color of the image is poor or	<ul style="list-style-type: none"> <li>• Adjust White Balance.</li> </ul>

strange.	<ul style="list-style-type: none"> <li>To insure the images you are viewing are the best they can be, set the Display property setting (color quality) to 16bit at least and 24 bit or higher if possible within your computer.</li> <li>The configuration on the device image display is incorrect. You need to adjust the image related parameters such as brightness, contrast, hue and sharpness properly.</li> </ul>
Image flickers.	<ul style="list-style-type: none"> <li>Wrong power line frequency makes images flicker. Make sure the 50 or 60Hz format of your device.</li> <li>If the object is dark, the image will flicker. Make the condition around the Camera brighter.</li> </ul>
Noisy images occur.	The video images might be noisy if the device is located in a very low light environment. Make the condition around the camera brighter or turn the IR LED on.
<b>Miscellaneous</b>	
Cannot play the recorded ASF file	Please installed Microsoft®'s DirectX 9.0 or later and uses the Windows Media Player 11.0 or later to play the AVI filed recorded by the Device.
Cannot unmount SD card immediately after stop continuous recording	When stop continuous recording can't run unmount SD card immediately. Because of ICA-4200V series need about two minutes to stop recording procedure. Please wait two minutes later then run unmount SD card.