

Quick Installation Guide

WNRT-633

300Mbps 802.11n Wireless
Gigabit Broadband Router



1. Package Contents

Thank you for choosing PLANET WNRT-633. Before installing the router, please verify the contents inside the package box.

The WNRT-633 should contain the following items in the package:

Wireless Router

Quick Guide

CD-ROM



12V/1A Power Adapter

Ethernet Cable

5dBi Antennas

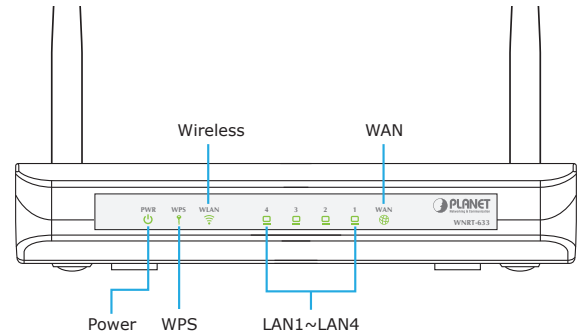


If there is any item missing or damaged, please contact the seller immediately.

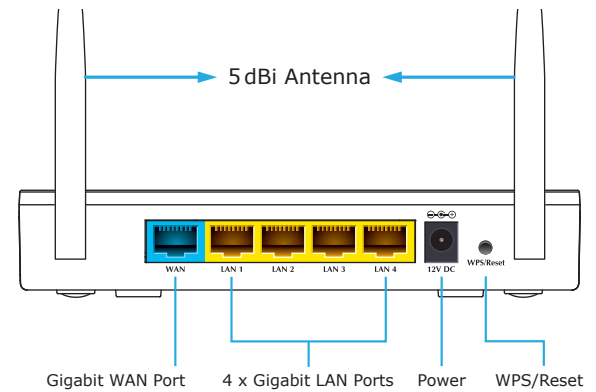
- 1 -

2. Physical Introduction

Front Panel Description



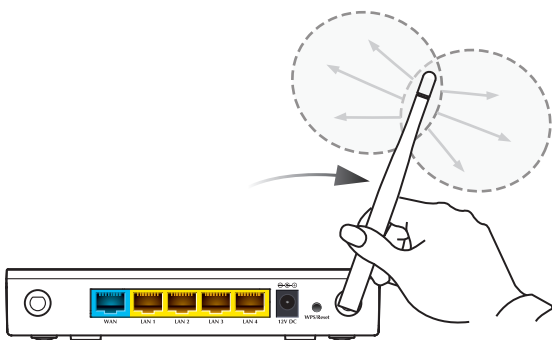
Rear Panel Description



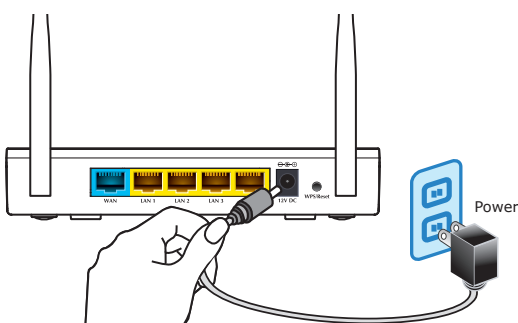
- 2 -

3. Hardware Installation

STEP 1: Locate the Wireless Router in an optimum place, and adjust the antenna for the best coverage.

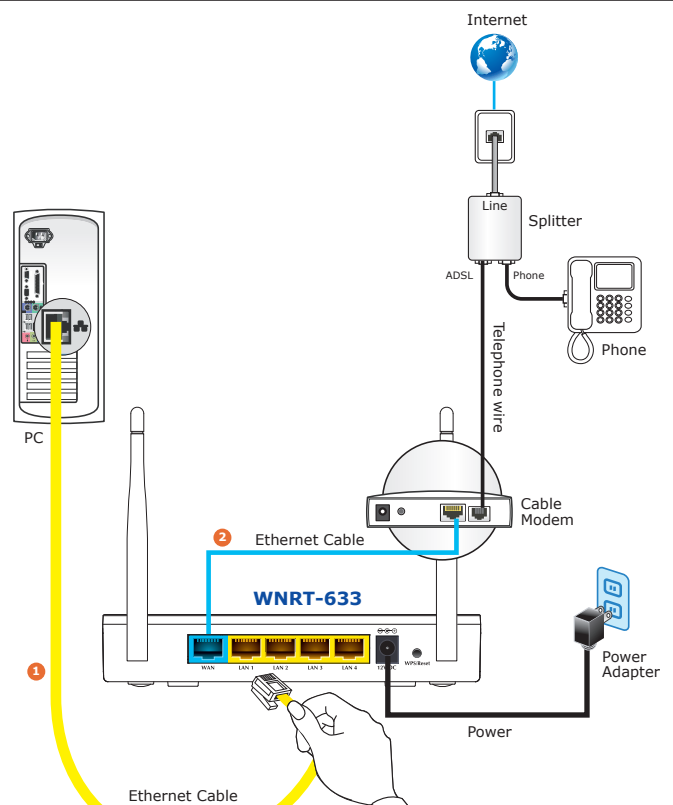


STEP 2: Connect the Power Adapter provided in the package to the Wireless Router. The power LED (PWR) on the front panel will turn on accordingly.



- 3 -

STEP 3: Follow the figure below to connect the network devices. It depends on your network environment to connect the WAN port to a Cable/xDSL modem, or the Ethernet directly in your place.



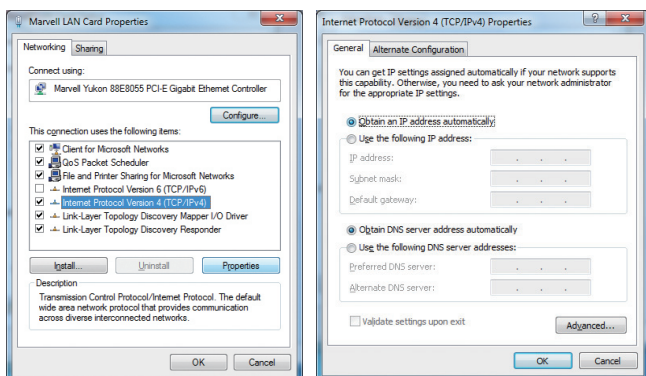
- 4 -

4. Wired Network Configuration (Windows 7)

A computer with wired Ethernet connection is required for the first-time configuration of the Wireless Router.

Set your computer to get an IP address from the Wireless Router:

1. Click **"Start"** button located at the lower-left corner of your computer.
2. Click **"Control Panel"**.
3. Double click **"Network and Sharing Center"** icon.
4. Click **"Change Adapter Settings"**.
5. Double click **"Local Area Connection"**.
6. Select **"Internet Protocol Version 4(TCP/IPv4)"** and click **"Properties"**.
7. Select **"Obtain an IP Address automatically"** and **"Obtain DNS Server Address automatically"**, and then click **"OK"** button twice to save the configuration.



- 5 -

5. Enter into the Web Management

Default IP Address: **192.168.1.1**
Default Username: **admin**
Default Password: **admin**
Default SSID: **WNRT-633**
Default Wireless Encryption Type: **None**

STEP 1: The Web management allows you to access and manage the Wireless Router easily. Launch the Web browser and enter the default IP address **http://192.168.1.1**



STEP 2: When the login window pops up, please enter the User Name and Password. The default User Name and Password are both **"admin"**. Then click **OK** button to continue.



For security reasons it is recommended to change the password at the first login and memorize it.

- 6 -

STEP 3: After you enter into the Web User Interface, click **Wizard** at the left hand side of the screen. Please follow the indications on the screen to quickly set up for the Internet connection.



STEP 4: Once the basic configuration of the router is done. Click **"Finished"** button for the change to take effect.

STEP 2: Highlight the wireless network (SSID) to connect and click **[Connect]** button.



STEP 3: Enter the **encryption key** of the Wireless Router if necessary.

You have already finished the configuration of the WNRT-633. Now you can use your iPhone, iPad, laptop, and any other Wi-Fi device to connect with it wirelessly and start surfing the internet.

6. Wireless Network Connection

STEP 1: Right-Click on the **network icon** displayed in the system tray.



- 7 -

Further Information

The above steps introduce simple installations and configurations of the WNRT-633. For further configurations of WAN, LAN, Wireless, Firewall, Virtual Server, Security, Routing, DMZ, DDNS, etc, please refer to the user's manual in the CD. If you have further questions, please contact the local dealer or distributor where you purchased this product.

2011-E50300-000

- 8 -