

48-Port 10/100/1000Base-T + 4-Port 1000X SFP

Managed Gigabit Switch

WGSW-52040

Quick Installation Guide

Table of Contents

1. Package Contents	3
2. Switch Management.....	4
3. Requirements	5
4. Terminal Setup	6
5. Logon to the Console.....	8
6. Configuring IP Address.....	9
7. Starting Web Management	11
8. Saving the Configuration	13
9. Login the Managed Switch.....	14
10. Customer Support.....	16

1. Package Contents

Thank you for purchasing PLANET 48-Port 10/100/1000Base-T + 4-Port 1000X SFP Managed Gigabit Switch, WGSW-52040. **"Managed Switch"** is also used to refer to the WGSW-52040 in this quick installation guide.

Open the box of the **Managed Switch** and carefully unpack it. The box should contain the following items:

- The Managed Switch x 1
- This Quick Installation Guide x 1
- User's Manual CD x1
- RJ-45-to-DB9 Console Cable x 1
- Power Cord x 1
- Rubber Feet x 4
- Two Rack-mounting Brackets with Attachment Screws x 1
- SFP Dust Caps x 4

If any item is found missing or damaged, please contact your local reseller for replacement.

2. Switch Management

To set up the Managed Switch, the user needs to configure the Managed Switch for network management. The Managed Switch provides two management options: **Out-of-Band Management** and **In-Band Management**.

■ Out-of-Band Management

Out-of-band management is the management through Console interface. **Generally, the user will use out-of-band management for the initial switch configuration**, or when in-band management is not available.

IMPORTANT!

The Managed Switch is shipped without IP address assigned by default. User must assign an IP address to the Managed Switch via the Console interface to be able to remotely access the Managed Switch through Telnet or HTTP.

■ In-Band Management

In-band management refers to the management by login to the Managed Switch using Telnet, HTTP, or using SNMP management software to configure the Managed Switch. In-band management enables management of the Managed Switch for some devices attached to the Switch. The following procedures are required to enable In-band management:

1. Logon Console
2. Assign / Configure IP Address
3. Create a remote login account
4. Enable HTTP or Telnet server on the Managed Switch

In the case when in-band management fails due to Managed Switch configuration changes, out-of-band management can be used for configuring and managing the Managed Switch.

3. Requirements

The Managed Switch provides remote login interface for management. The following equipment is necessary for further management.

- **Workstation** running Windows XP/2003/Vista/Windows 7, MAC OS X, Linux, Fedora, Ubuntu or other platform.
- **Serial Port Connection** (Terminal)
 - The above Workstation with COM Port (DB9) or USB-to-RS-232 converter.
 - The above Workstation is installed with terminal emulator, such as Hyper Terminal included in Windows XP/2003.
 - Serial cable: one end is attached to the RS-232 serial port; the other end to the Console port of the Managed Switch.
- **Ethernet Port Connection**
 - The above Workstation is OS compatible with TCP/IP protocols.
 - The above Workstation is installed with Ethernet NIC (Network Card)
 - Network cables - Use standard network (UTP) cables with RJ-45 connectors.
 - The above Workstation is installed with WEB Browser and JAVA runtime environment Plug-in



Note

It is recommended to use Internet Explore 7.0 or above to access the Managed Switch. If the Web interface of the Managed Switch is not accessible, please turn off the anti-virus software or firewall and then try it again.

4. Terminal Setup

To configure the system, connect a serial cable to a **COM port** on a PC or notebook computer and to serial (console) port of the Managed Switch. The console port of the Managed Switch is DCE already, so that you can connect the console port directly through PC without the need of Null Modem.

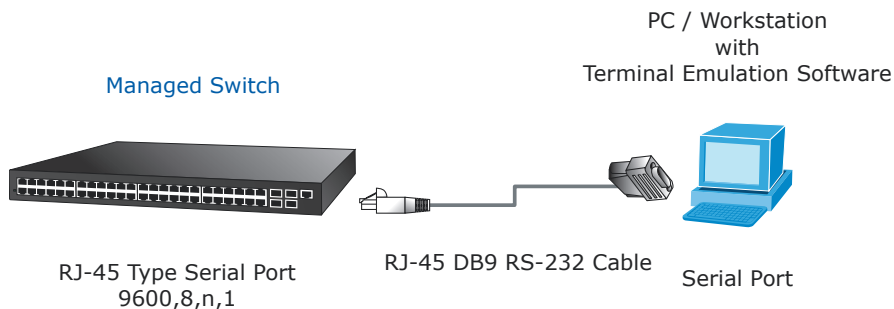


Figure 4-1 Managed Switch Console Connectivity

A terminal program is required to make the software connection to the Managed Switch. Windows' **Hyper Terminal** program may be a good choice. The Hyper Terminal can be accessed from the **Start** menu.

- 1, Click **START** menu, then **Programs, Accessories** and then **Hyper Terminal**.
2. Type a name for opening Hyper Terminal, such as "**COM1_9600**".

3. When the following screen appears, make sure that the COM port should be configured as:

- Baud : 9600
- Parity : None
- Data bits : 8
- Stop bits : 1
- Flow Control : None

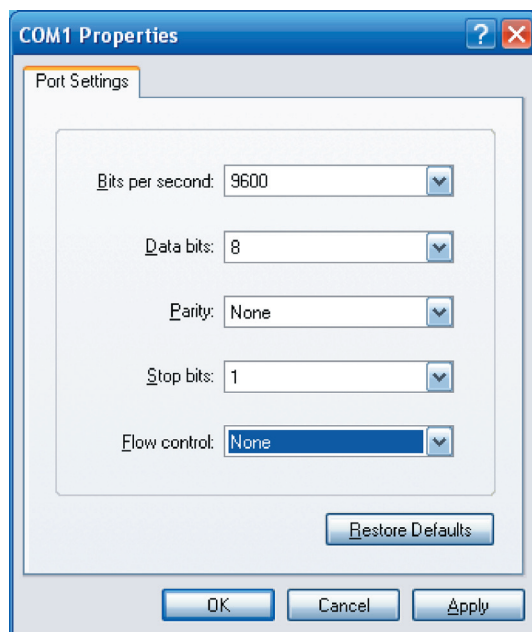


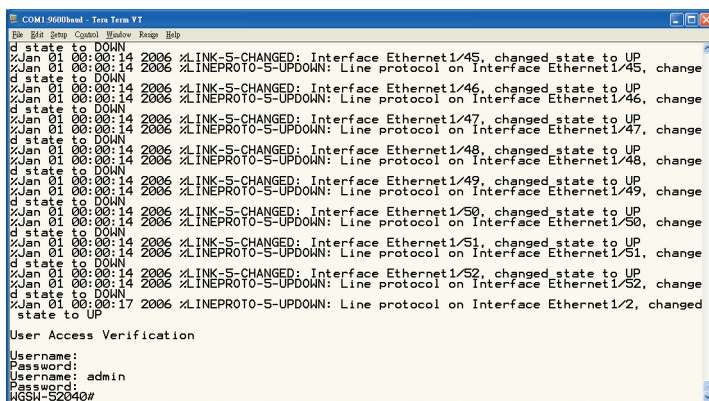
Figure 4-2 Hyper Terminal COM Port Configuration

5. Logon to the Console

Once the terminal is connected to the device, power on the Managed Switch, and the terminal will display “running testing procedures”.

Then, the following message asks the login user name and password. The factory default user name and password are as follows as the login screen in Figure 5-1 appears.

Username: **admin**
Password: **admin**



```
COM1-9600baud - Tera Term VT
File Edit Setup Control Window Range Help

d state to DOWN
%Jan 01 00:00:14 2006 %LINK-S-CHANGED: Interface Ethernet1/45, changed state to UP
%Jan 01 00:00:14 2006 %LINEPROTO-S-UPDOWN: Line protocol on Interface Ethernet1/45, change
d state to DOWN
%Jan 01 00:00:14 2006 %LINK-S-CHANGED: Interface Ethernet1/46, changed state to UP
%Jan 01 00:00:14 2006 %LINEPROTO-S-UPDOWN: Line protocol on Interface Ethernet1/46, change
d state to DOWN
%Jan 01 00:00:14 2006 %LINK-S-CHANGED: Interface Ethernet1/47, changed state to UP
%Jan 01 00:00:14 2006 %LINEPROTO-S-UPDOWN: Line protocol on Interface Ethernet1/47, change
d state to DOWN
%Jan 01 00:00:14 2006 %LINK-S-CHANGED: Interface Ethernet1/48, changed state to UP
%Jan 01 00:00:14 2006 %LINEPROTO-S-UPDOWN: Line protocol on Interface Ethernet1/48, change
d state to DOWN
%Jan 01 00:00:14 2006 %LINK-S-CHANGED: Interface Ethernet1/49, changed state to UP
%Jan 01 00:00:14 2006 %LINEPROTO-S-UPDOWN: Line protocol on Interface Ethernet1/49, change
d state to DOWN
%Jan 01 00:00:14 2006 %LINK-S-CHANGED: Interface Ethernet1/50, changed state to UP
%Jan 01 00:00:14 2006 %LINEPROTO-S-UPDOWN: Line protocol on Interface Ethernet1/50, change
d state to DOWN
%Jan 01 00:00:14 2006 %LINK-S-CHANGED: Interface Ethernet1/51, changed state to UP
%Jan 01 00:00:14 2006 %LINEPROTO-S-UPDOWN: Line protocol on Interface Ethernet1/51, change
d state to DOWN
%Jan 01 00:00:14 2006 %LINK-S-CHANGED: Interface Ethernet1/52, changed state to UP
%Jan 01 00:00:14 2006 %LINEPROTO-S-UPDOWN: Line protocol on Interface Ethernet1/52, change
d state to DOWN
%Jan 01 00:00:17 2006 %LINEPROTO-S-UPDOWN: Line protocol on Interface Ethernet1/2, changed
state to UP

User Access Verification
Username:
Password:
Username: admin
Password:
HGSN-S2040#
```

Figure 5-1 Managed Switch Console Login Screen

The user can now enter commands to manage the Switch. For a detailed description for the commands, please refer to the following chapters.



Note

1. For security reason, please change and memorize the new password after this first setup.
2. Only accept command in lowercase letter under console interface.

6. Configuring IP Address

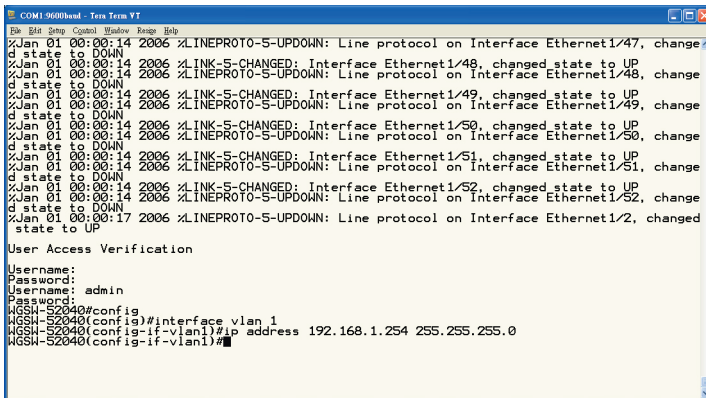
The IP address configuration commands for VLAN1 interface are listed below. Before in-band management, the Managed Switch must be configured with an IP address by out-of-band management (i.e. Console mode), the configuration commands are as follows (All switch configuration prompts are assumed to be "WGSW-52040" hereafter if not otherwise specified):

```
WGSW-52040> enable
WGSW-52040# config
WGSW-52040(config)# interface vlan 1
WGSW-52040(Config-if-Vlan1)# ip address 192.168.1.254 255.255.255.0
```

The previous command would apply the follow settings for the Managed Switch.

IPv4 Address: **192.168.1.254**

Subnet Mask: **255.255.255.0**



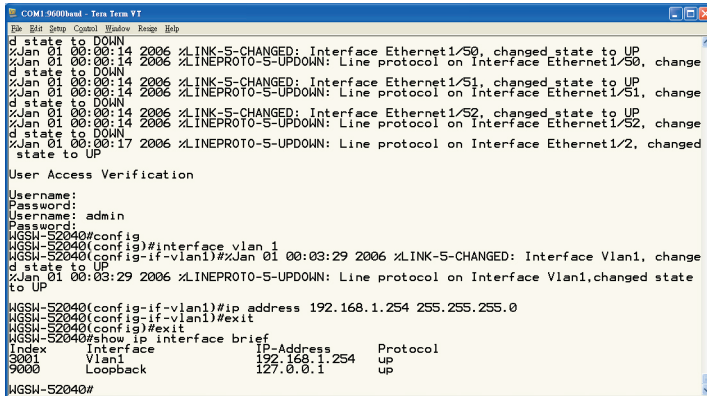
```
COM1 9600baud - Tera Term VT
File Edit View Control Window Help
%Jan 01 00:00:14 2006 %LINEPROTO-5-UPDOWN: Line protocol on Interface Ethernet1/47, change
d state to DOWN
%Jan 01 00:00:14 2006 %LINK-5-CHANGED: Interface Ethernet1/48, changed state to UP
%Jan 01 00:00:14 2006 %LINEPROTO-5-UPDOWN: Line protocol on Interface Ethernet1/48, change
d state to DOWN
%Jan 01 00:00:14 2006 %LINK-5-CHANGED: Interface Ethernet1/49, changed state to UP
%Jan 01 00:00:14 2006 %LINEPROTO-5-UPDOWN: Line protocol on Interface Ethernet1/49, change
d state to DOWN
%Jan 01 00:00:14 2006 %LINK-5-CHANGED: Interface Ethernet1/50, changed state to UP
%Jan 01 00:00:14 2006 %LINEPROTO-5-UPDOWN: Line protocol on Interface Ethernet1/50, change
d state to DOWN
%Jan 01 00:00:14 2006 %LINK-5-CHANGED: Interface Ethernet1/51, changed state to UP
%Jan 01 00:00:14 2006 %LINEPROTO-5-UPDOWN: Line protocol on Interface Ethernet1/51, change
d state to DOWN
%Jan 01 00:00:14 2006 %LINK-5-CHANGED: Interface Ethernet1/52, changed state to UP
%Jan 01 00:00:14 2006 %LINEPROTO-5-UPDOWN: Line protocol on Interface Ethernet1/52, change
d state to DOWN
%Jan 01 00:00:17 2006 %LINEPROTO-5-UPDOWN: Line protocol on Interface Ethernet1/2, change
d state to UP
User Access Verification
Username:
Password:
Username: admin
Password:
WGSW-52040#config
WGSW-52040(config)#interface vlan 1
WGSW-52040(config-if-vlan1)#ip address 192.168.1.254 255.255.255.0
WGSW-52040(config-if-vlan1)#
```

Figure 6-1 Configuring IPv4 address Screen

To check the current IP address or modify a new IP address for the Managed Switch, please use the procedures as follows:

■ Show the current IP address

1. On "**WGSW-52040#**" prompt, enter "**show ip interface brief**".
2. The screen displays the current IP address, Subnet Mask and Gateway as shown in Figure 6-2.



```
COM1-9600baud - Tera Term V1.1
File Edit Setup Console Window Window Help
d state to DOWN
%Jan 01 00:00:14 2006 %LINK-S-CHANGED: Interface Ethernet1/50, changed state to UP
%Jan 01 00:00:14 2006 %LINEPROTO-S-UPDOWN: Line protocol on Interface Ethernet1/50, change
d state to DOWN
%Jan 01 00:00:14 2006 %LINK-S-CHANGED: Interface Ethernet1/51, changed state to UP
%Jan 01 00:00:14 2006 %LINEPROTO-S-UPDOWN: Line protocol on Interface Ethernet1/51, change
d state to DOWN
%Jan 01 00:00:14 2006 %LINK-S-CHANGED: Interface Ethernet1/52, changed state to UP
%Jan 01 00:00:14 2006 %LINEPROTO-S-UPDOWN: Line protocol on Interface Ethernet1/52, change
d state to DOWN
%Jan 01 00:00:17 2006 %LINEPROTO-S-UPDOWN: Line protocol on Interface Ethernet1/2, changed
state to UP
User Access Verification
Username:
Password:
Username: admin
Password:
WGSW-52040#config
WGSW-52040(config)#interface vlan 1
WGSW-52040(config-if-vlan1)#%Jan 01 00:03:29 2006 %LINK-S-CHANGED: Interface Vlan1, change
d state to UP
%Jan 01 00:03:29 2006 %LINEPROTO-S-UPDOWN: Line protocol on Interface Vlan1,changed state
to UP
WGSW-52040(config-if-vlan1)#ip address 192.168.1.254 255.255.255.0
WGSW-52040(config-if-vlan1)#exit
WGSW-52040(config)#exit
WGSW-52040#show ip interface brief
Index      Interface      IP-Address      Protocol
3001      Vlan1          192.168.1.254    up
9000      Loopback       127.0.0.1        up
WGSW-52040#
```

Figure 6-2 Showing IP information Screen

If the IP is successfully configured, the Managed Switch will apply the new IP address setting immediately. You can access the Web interface of Managed Switch through the new IP address.



Note

If you are not familiar with console command or the related parameter, enter "**help**" anytime in console to get the help description.

7. Starting Web Management

For configuring the IP address on the Managed Switch through out-of-band management, see the telnet management chapter.

To enable the Web configuration, users should type the CLI command `IP http server` in the global mode as shown below:

```
WGSW-52040> enable
WGSW-52040# config
WGSW-52040(config)# ip http server
```

The Managed Switch provides a built-in browser interface. You can manage it remotely by having a remote host with Web browser, such as Microsoft Internet Explorer, Mozilla Firefox, Google Chrome or Apple Safari.

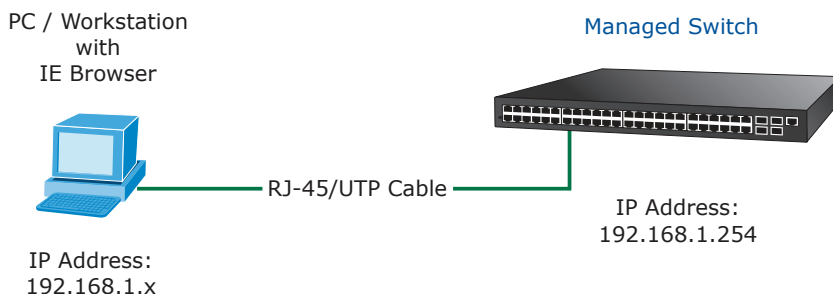


Figure 7-1 IP Management Diagram



Please refer to Chapter 5 – CONFIGURING IP ADDRESS for the IPv4 IP address setting on the Managed Switch.

The following shows how to start up the **Web Management** of the Managed Switch. Please note the Managed Switch is configured through an Ethernet connection. Please make sure the manager PC must be set on the same **IP subnet address**.

■

For example, the IP address of the Managed Switch is configured with **192.168.1.254**, then the manager PC should be set at **192.168.1.x** (where x is a number between 1 and 253, except 254), and the default subnet mask is 255.255.255.0.

The factory default user name and password are as follows:

Username: **admin**

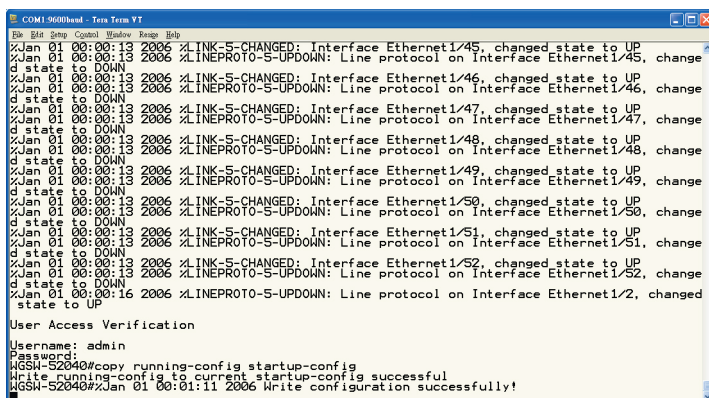
Password: **admin**

8. Saving the Configuration

In Managed Switch, the running configuration file stores in the RAM. In the current version, the running configuration sequence **running-config** can be saved from the RAM to FLASH by **write** command or **copy running-config startup-config** command, so that the running configuration sequence becomes the start up configuration file, which is called configuration save.

```
WGSW-52040> enable
```

```
WGSW-52040# copy running-config startup-config
```



```
COM1-9600baud - Tera Term VT
File Edit Setup Control Window Range Help
%Jan 01 00:00:13 2006 %LINK-S-CHANGED: Interface Ethernet1/45, changed state to UP
%Jan 01 00:00:13 2006 %LINEPROTO-S-UPDOWN: Line protocol on Interface Ethernet1/45, change
d state to DOWN
%Jan 01 00:00:13 2006 %LINK-S-CHANGED: Interface Ethernet1/46, changed state to UP
%Jan 01 00:00:13 2006 %LINEPROTO-S-UPDOWN: Line protocol on Interface Ethernet1/46, change
d state to DOWN
%Jan 01 00:00:13 2006 %LINK-S-CHANGED: Interface Ethernet1/47, changed state to UP
%Jan 01 00:00:13 2006 %LINEPROTO-S-UPDOWN: Line protocol on Interface Ethernet1/47, change
d state to DOWN
%Jan 01 00:00:13 2006 %LINK-S-CHANGED: Interface Ethernet1/48, changed state to UP
%Jan 01 00:00:13 2006 %LINEPROTO-S-UPDOWN: Line protocol on Interface Ethernet1/48, change
d state to DOWN
%Jan 01 00:00:13 2006 %LINK-S-CHANGED: Interface Ethernet1/49, changed state to UP
%Jan 01 00:00:13 2006 %LINEPROTO-S-UPDOWN: Line protocol on Interface Ethernet1/49, change
d state to DOWN
%Jan 01 00:00:13 2006 %LINK-S-CHANGED: Interface Ethernet1/50, changed state to UP
%Jan 01 00:00:13 2006 %LINEPROTO-S-UPDOWN: Line protocol on Interface Ethernet1/50, change
d state to DOWN
%Jan 01 00:00:13 2006 %LINK-S-CHANGED: Interface Ethernet1/51, changed state to UP
%Jan 01 00:00:13 2006 %LINEPROTO-S-UPDOWN: Line protocol on Interface Ethernet1/51, change
d state to DOWN
%Jan 01 00:00:13 2006 %LINK-S-CHANGED: Interface Ethernet1/52, changed state to UP
%Jan 01 00:00:13 2006 %LINEPROTO-S-UPDOWN: Line protocol on Interface Ethernet1/52, change
d state to DOWN
%Jan 01 00:00:16 2006 %LINEPROTO-S-UPDOWN: Line protocol on Interface Ethernet1/2, changed
state to UP
User Access Verification
Username: admin
Password:
WGSW-52040#copy running-config startup-config
Write running-config to current startup-config successful
WGSW-52040#%Jan 01 00:01:11 2006 Write configuration successfully!
```

Figure 8-1 Copying Running-config Startup-config Screen

9. Login the Managed Switch

1. Use Internet Explorer 7.0 or above Web browser and enter IP address **<http://192.168.1.254>** (that you have just set in console) to access the Web interface.
2. When the following dialog box appears, please enter the configured username **"admin"** and password **"admin"** (or the username / password you have changed via console). The login screen in Figure 9-1 appears.

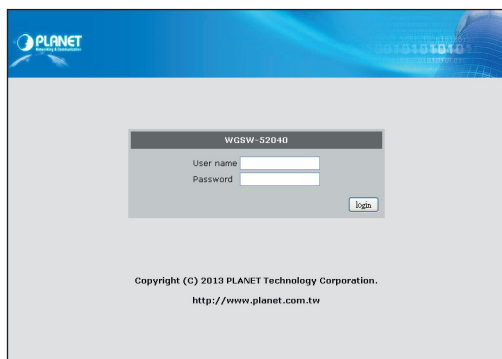


Figure 9-1 Login screen

3. After entering the password, the main screen appears as shown in Figure 9-2.

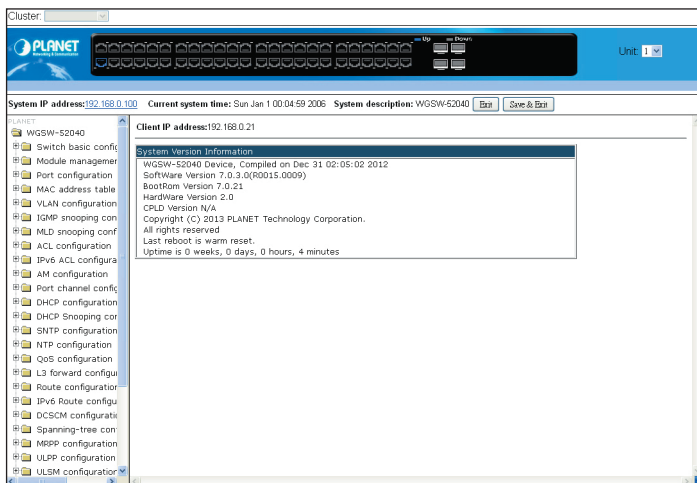


Figure 9-2 Web Main Screen of Managed Switch

4. The Switch Menu on the left of the Web page lets you access all the commands and statistics the Switch provides.

Now, you can use the Web management interface to continue the Switch management or manage the Managed Switch by console interface. Please refer to the user manual for more.

10. Customer Support

Thank you for purchasing PLANET products. You can browse our online FAQ resource at the PLANET Web site first to check if it could solve your issue. If you need more support information, please contact PLANET switch support team.

PLANET online FAQ :

<http://www.planet.com.tw/en/support/faq.php?type=1>

Switch support team mail address :

support_switch@planet.com.tw

Copyright © PLANET Technology Corp. 2013.

Contents are subject to revision without prior notice.

PLANET is a registered trademark of PLANET Technology Corp.

All other trademarks belong to their respective owners.