

300Mbps 802.11n Wireless In-wall PoE Access Point



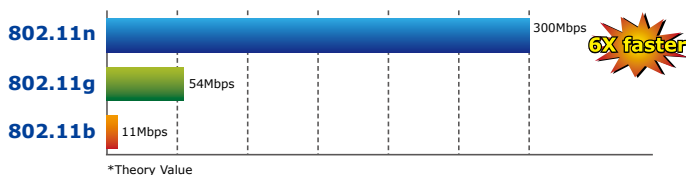
Wall Outlet to Wireless Solution

The WNAP-W2200 is a stylish in-wall Wi-Fi access point, which is specially designed for existing building structure, without affecting the appearance of the interior design. The design can provide users with convenient wireless local area network (WLAN). The WNAP-W2200 is designed with standard 86 x 86 mm European Outlet Box size and can be installed in the existing building structure to easily construct a wireless network. Thus, it helps system integrator save time, cost and human resource.



Ultra High Speed 802.11n Wireless Type

The WNAP-W2200 features IEEE 802.11n radio with 2T2R MIMO antenna technology to provide improved wireless speed and coverage with up to 300Mbps upload and download data rate. The incredible wireless speed makes it ideal for stably and smoothly handling multiple HD movies stream, high resolution on-line game, stereo music, VoIP and data streams at the same time. It is also backward compliant with 802.11g and 802.11b standards; thus, it does not need to change the existing network for convenient maintenance. Just connect to the WNAP-W2200 and you can immediately enjoy the high-speed wireless sharing.



Standard Compliant Hardware Interface

- Complies with IEEE 802.11n wireless LAN speed up to 300Mbps
- 2 x 10/100Base-TX Port with 1-port PoE PD (powered device)
- 2T2R MIMO technology for enhanced throughput and coverage
- USB 2.0 charger port for easy charging to most of mobile devices
- European 86 type wall outlet compatibility

Secure Network Connection

- Advanced security: 64/128-bit WEP, WPA / WPA2, WPA-PSK / WPA2-PSK (TKIP/AES encryption) and radius authentication
- Supports MAC address filtering

Easy Installation & Management

- Easy deployment with standard IEEE 802.3af PoE support
- User-friendly web-based UI
- Centralized Management Utility allows administrator to monitor and configure

Full Support of Wireless Security Encryption

In aspect of security, besides 64/128-bit WEP encryption, the WNAP-W2200 integrates with WPA / WPA2, WPA-PSK / WPA2-PSK and 802.1x radius authority to secure and protect your wireless LAN. It provides the wireless MAC filtering and SSID broadcast control to consolidate the wireless network security and prevent unauthorized wireless connection.

Attractive In-wall Design

Featuring attractive in-wall design, the WNAP-W2200 can be firmly installed into the wall via the standard 86 x 86 mm European outlet box, which is easy and convenient for room installation. Its simple body without protruding antennas also gives no effects to the surroundings.



Convenient USB Charger

To provide better services for travelers, the WNAP-W2200 comes with a built-in USB 2.0 charger whose output of 5V DC power can charge any USB compliant mobile devices, e.g. cell phones, ipads, and other handheld devices. Thus, this option gives convenience to pedestrians and travelers. They need not worry about forgetting to carry an AC adapter.

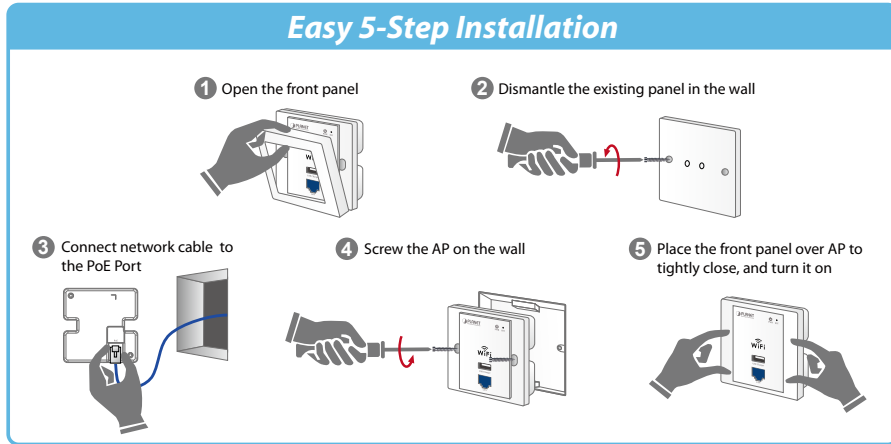


Flexible Deployment with PoE Feature

Compliant with IEEE 802.3af Power over Ethernet standard, the WNAP-W2200 can be powered and networked by a single UTP cable. It thus reduces the needs of extra cables and dedicated electrical outlets on the wall, ceiling or any other place which is difficult to reach. The wireless AP deployment becomes more flexible and worry-free from the power outlet locations.

Easy Installation & Management

With user-friendly Web UI and Central Management Utility, it is easy for users to install the WNAP-W2200, even for a user who never experiences setting up a wireless network. In addition, its SNMP feature allows the system administrator to remotely monitor and control the network devices more efficiently.



Applications

Wall Outlet Design Makes Wiring Invisible

The WNAP-W2200 is specifically designed for hotel's Wi-Fi access point, offering guests convenient Wireless LAN service. With the standard 86 type electrical outlet box installed, you don't need to spend extra time and cost to deploy the wireless network. Its small and stylish appearance adapted to the room can match any decor without affecting the original interior design. The WNAP-W2200 supports standard 802.3af PoE power scheme, effectively reducing the cabling cost. Furthermore, it also integrates with a USB 2.0 port that can help a guest replace a heavy charger with just a single USB cable for the charging needs of the handheld device. The WNAP-W2200, with the Planet Smart Discovery Utility and valuable unified management software, brings the most convenience to system administrators or machine operators. No expensive instruments or complex back-end subscriber managed systems are required for deployment.



Wireless Consumer Applications

Wi-Fi Hotel Networking



Specifications

| | | |
|---|---|--|
| Product | 300Mbps 802.11n Wireless In-wall Access Point | |
| Product | WNAP-W2200 | |
| Hardware Specifications | | |
| Interface | PoE Port | 1 x 10/100Mbps auto MDI/MDI-X RJ45 port (rear panel), IEEE 802.3af PoE PD port |
| | LAN Port | 1 x 10/100Mbps auto MDI/MDI-X RJ45 port (front panel) |
| | USB Port | USB 2.0, Type-A, 5V DC/0.5A output |
| PoE Standard | IEEE 802.3af | |
| Antenna | Built-in 3dBi antenna x 2 | |
| Reset Button | Reset button on front panel | |
| LED Indicators | PWR/SYS LED | |
| Material | Plastic | |
| Dimensions (W x D x H) | 86 x 86 x 36 mm | |
| Weight | 113g | |
| Power Requirements | 48V DC, 320mA | |
| Power Consumption | < 10W | |
| Wireless interface Specification | | |
| Standard | Compliant with IEEE 802.11b/g/n | |
| Frequency Band | Europe / ETSI: 2.412~2.472GHz (13 Channels) | |
| Channel Width | 20 or 20/40MHz | |
| Transmission Distance | Indoor up to 100m | |
| RF Power (Intentional Radiator) | IEEE 802.11b: 18dBm | |
| | IEEE 802.11g: 15dBm | |
| | IEEE 802.11n: 15dBm | |

Ordering Information

| | |
|------------|---|
| WNAP-W2200 | 300Mbps 802.11n Wireless In-wall PoE Access Point |
|------------|---|

Related Products

| | |
|-----------|--|
| WNL-U556M | 300Mbps 802.11n Wireless Micro USB Adapter |
| WDL-U700 | 300Mbps Dual Band 802.11n Wireless USB Adapter |
| WNL-U554A | 802.11n Wireless USB 2.0 Adapter External 3dBi Antenna |
| WNL-U554M | 802.11n Micro Wireless USB 2.0 Adapter |
| WNL-9501 | 802.11n Wireless PCI Express Adapter |

* To have the best performance and wireless connection, we sincerely advise you to match the above-related products.

Related PoE Products

| | |
|---------------|---|
| ISW-1022MPT | 8-Port 10/100Mbps + 2-Port Gigabit TP/SFP Combo PoE Managed Industrial Switch with Wide Operating Temperature |
| ISW-514PTF | 4-Port 10/100Mbps with PoE + 1-Port 100FX Industrial Ethernet Switch – Wide Temperature |
| ISW-804PT-M12 | Industrial IP67 Rated 8-Port 10/100Mbps M12 Fast Ethernet PoE Switch with Wide Operating Temperature |
| IVC-2004PT | 4-Port 10/100Base-TX with PoE + 1-Port BNC / RJ-11 Industrial Ethernet Extender |
| FTP-802 | 100Base-FX to 10/100Base-TX PoE Media Converter |
| SGSW-24040P | 24-Port Gigabit PoE Managed Stackable Switch / 220W |
| POE-E101 | IEEE 802.3af Power over Ethernet Extender |