

## Quick Installation Guide

WDL-U600AC

433Mbps 802.11AC Dual Band  
Wireless USB Adapter



## 1. Package Contents

Thank you for choosing PLANET Wireless USB Adapter. Before installing the adapter, please verify the contents inside the package box.

WDL-U600AC

Quick Guide

CD-ROM



If there is any item missing or damaged, please contact the seller immediately.



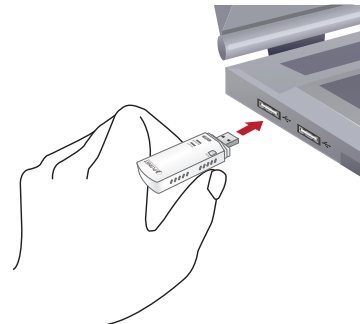
### Before Installation

1. If you are currently using a wireless adapter, please uninstall the existing driver and utilities first.
2. The following installation is performed in Windows 7. The procedures in other OS's are similar.

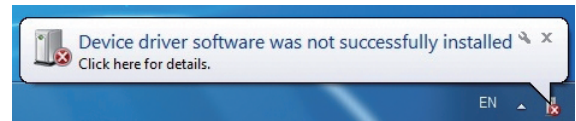
- 1 -

## 2. Installation

**Step 1 :** Insert the USB wireless network card into an empty USB 2.0 port of your computer when computer is switched on. Never use force to insert the card; if you feel it's stuck, flip the card over and try again.



**Step 2 :** The system will find the new hardware and display the below message.

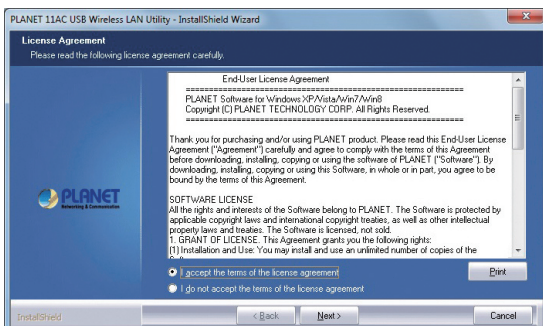


- 2 -

**Step 3 :** Insert the bundled CD into the CD-ROM drive. Then a web-menu will appear. Click the **"Windows Utility (Driver)"** hyperlink to initiate the installation wizard.

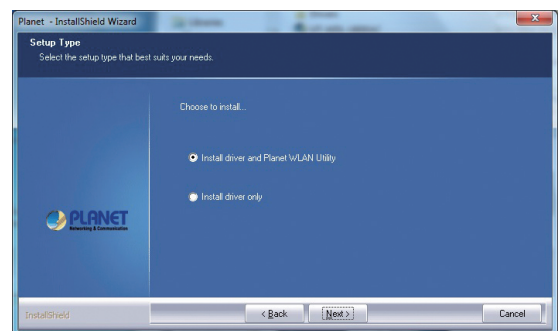


**Step 4 :** Read the License Agreement carefully. Select **"I accept the term of the license agreement"** and click **"Next"** button to accept it and continue.

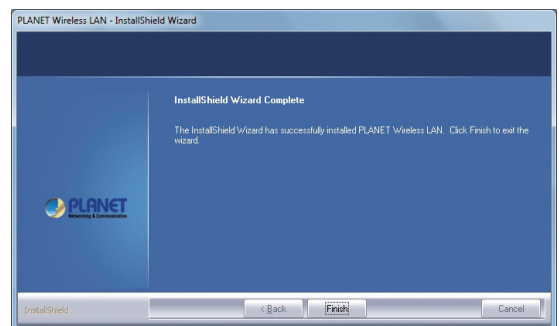


- 3 -


**Step 5 :** Click **"Next"** button to start installing the driver and utility.

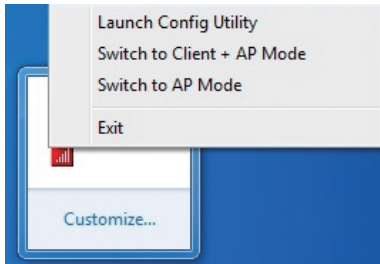


**Step 6 :** Please click **"Finish"** to finish the installation.



- 4 -

**STEP 7 :** Execute the WDL-U600AC utility, and then right-click the tray icon  of WDL-U600AC from the system task bar. Select **"Launch Config Utility"** to start setting your wireless network.



### 3a. Connection Method - 1

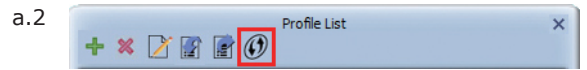
PLANET WDL-U600AC supports WPS. You can configure the wireless network by using the WPS function.

**a.1** Click **"Profile Settings"** icon.

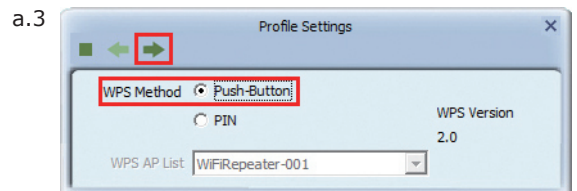


- 5 -

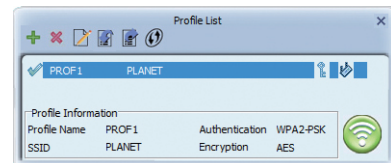
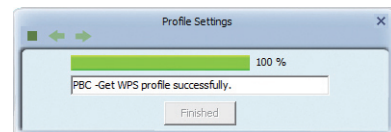
**a.2** Click **"Add WPS Profile"** button.



**a.3** Click **"Next"** button to go to the next step, and then press the WPS button found on your AP.



And these two network devices will begin to negotiate with each other. Then you'll be connected to the wireless network successfully.



- 6 -

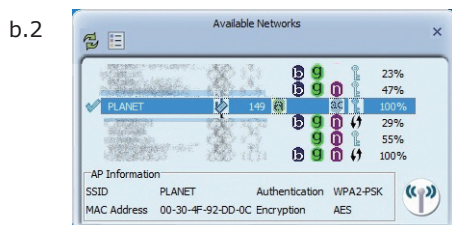
### 3b. Connection Method - 2

You can also configure the wireless network by yourself via PLANET 11AC USB Wireless LAN Utility.

**b.1** Click **"Available Network"** icon to search the available wireless AP.

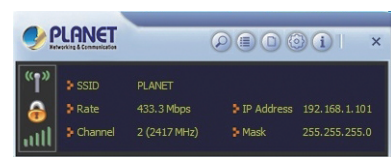
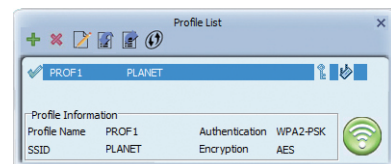
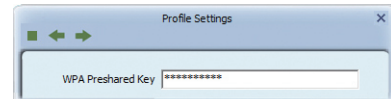
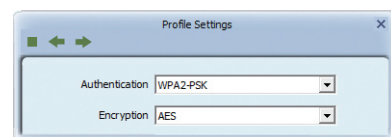


**b.2** Click twice on the AP and you will be connected, or click the **"Connect"** icon at the lower-right corner of the window.



**b.3** After the Authentication and Encryption have been confirmed, key in the password of the wireless AP in the **"WPA Preshared Key"**. Click **"Next"** button and the connection has been added to the profile, meaning you are being connected to the wireless network successfully.

**b.3**



### Further Information:

The steps above introduce simple installation for the WDL-U600AC. For further configuration of the Wi-Fi Protected Setup (WPS), Software AP, etc, please refer to the user's manual in the CD. If you have further questions, please contact the local dealer or distributor where you purchased this product.

2011-E23210-000

- 7 -

- 8 -