

## Quick Installation Guide

WDAP-C7200AC

1200Mbps 802.11ac Dual Band Ceiling Mount Wireless Access Point



## 1. Package Contents

Thank you for choosing PLANET WDAP-C7200AC. Before installing the AP, please verify the contents inside the package box.

The WDAP-C7200AC should contain the following items in the package:



If there is any item missing or damaged, please contact the seller immediately.

- 1 -

## 2. Physical Introduction

### Hardware Description



**Reset:** Press and hold the button for more than 10 seconds to reset to the factory default setting.

- 2 -

## 3. Hardware Installation

**STEP 1:** Drills the outlet hole indicated on the mounting label and sticks the given mounting label to the installation location to let the Ethernet cable penetrate the outlet hole. Then, drills the mounting holes as indicated on the label.

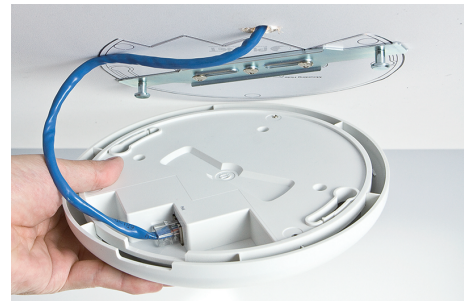


**STEP 2:** Take the mounting bracket, put it on the target place by aligning the holes and fix it with the supplied screws.



- 3 -

**STEP 3:** Plug the RJ-45 Ethernet cable into the PoE port of the WDAP-C7200AC.



**STEP 4:** Load the device into the mounting bracket, and be sure the device is mated with two fixed screws. Then, rotate the device clockwise to lock it in position.



**STEP 5:** Plug the other end of the Ethernet cable into the PoE switch.

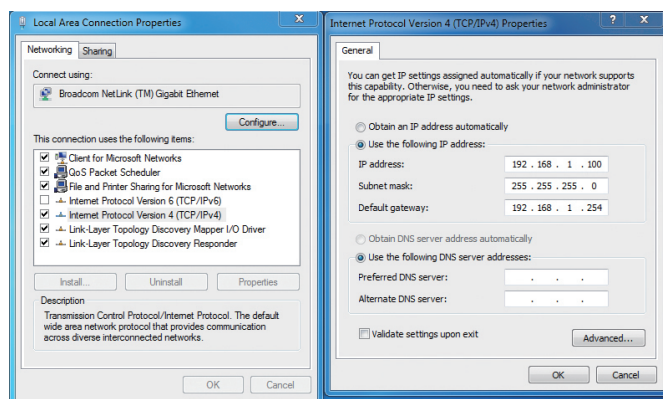


- 4 -

## 4. Wired Network Configuration (Windows 7)

A computer with wired Ethernet connection is required for the first-time configuration of the Wireless AP.

1. Click **"Start"** button located at the lower-left corner of your computer.
2. Click **"Control Panel"**.
3. Double click **"Network and Sharing Center"** icon.
4. Click **"Change Adapter Settings"**.
5. Double click **"Local Area Connection"**.
6. Select **"Internet Protocol Version 4(TCP/IPv4)"** and click **"Properties"**.
7. Select **"Use the following IP address"** and then click **"OK"** button twice to save the configuration. For example, as the default IP address of the WDAP-C7200AC is 192.168.1.253 and the router is 192.168.1.254, you may choose from 192.168.1.1 to 192.168.1.252.



- 5 -

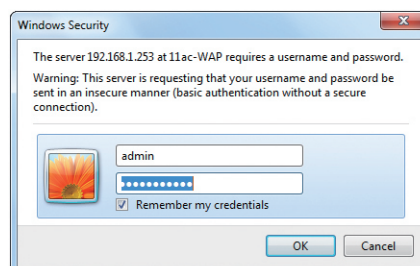
## 5. Entering into the Web Management

Default IP Address: **192.168.1.253**  
Default Username: **admin**  
Default Password: **admin**  
Default SSID (2.4GHz): **Planet AP 2.4G**  
Default SSID (5GHz): **Planet AP 5G**

**STEP 1:** The Web management allows you to access and manage the Wireless AP easily. Launch the Web browser and enter the default IP address **<http://192.168.1.253>**.



**STEP 2:** When the login window pops up, please enter the User Name and Password. The default User Name and Password are both **"admin"**. Then click **OK** button to continue.

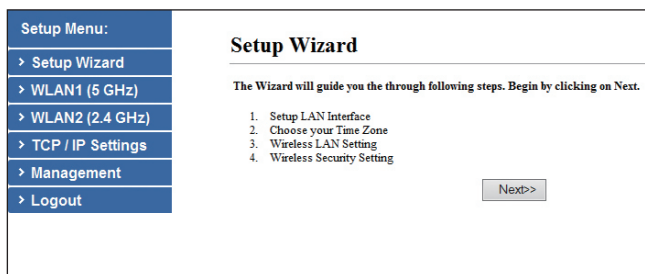


For security reasons, it is recommended to change the password at the first login and memorize it.

- 6 -

**STEP 3:** After you enter into the Web User Interface, go to **Setup Wizard** to configure your wireless network.

For security reasons, strongly recommended to configure the Encryption Method and Passphrase of your wireless network.



**STEP 4:** Once the basic configuration of the WDAP-C7200AC is done, click **"Finished"** button to make the change take effect.

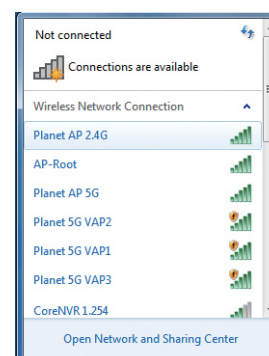
## 6. Wireless Network Connection

**STEP 1:** Right-click on the **network icon** displayed in the system tray.



- 7 -

**STEP 2:** Highlight the wireless network (SSID) to connect and click **[Connect]** button.



**STEP 3:** Enter the **encryption key** of the WDAP-C7200AC if necessary.

You have already finished the configuration of the WDAP-C7200AC. Now you can use your iPhone, iPad, laptop, and any other Wi-Fi device to connect with it wirelessly and start surfing the internet.

## Further Information:

The above steps introduce simple installations and configurations for the WDAP-C7200AC. For further configurations of LAN, Wireless, Access Control, etc, please refer to the user's manual in the CD. If you have further questions, please contact the local dealer or distributor where you purchased this product.

2010-E11010-000

- 8 -