

**16/24-Port 10/100/1000T 802.3at PoE +
2-Port 100/1000X SFP Managed Switch**

GS-4210-16P2S

GS-4210-24P2S

Quick Installation Guide

Table of Contents

1. Package Contents	3
2. Requirements	4
3. Terminal Setup	5
4. Logon to the Console	6
5. Configuring IP Address via the Console	7
6. Saving the Configuration via the Console.....	9
7. Starting Web Management	10
8. Saving Configuration via the Web	13
9. Recovering Back to Default Configuration.....	14
10. Customer Support.....	15

1. Package Contents

Thank you for purchasing PLANET 16/24-Port 10/100/1000T 802.3at PoE + 2-Port 100/1000X SFP Managed Switch, GS-4210-16P2S/GS-4210-24P2S. **“PoE Managed Switch”** mentioned in this quick installation guide refers to the GS-4210-16P2S/GS-4210-24P2S.

Open the box of the PoE Managed Switch and carefully unpack it. The box should contain the following items:

- The GS-4210-16P2S/GS-4210-24P2S x 1
- Quick Installation Guide x 1
- RS232 to RJ45 Cable x 1
- Rubber Feet x 4
- Two Rack-mounting Brackets with Attachment Screws x 1
- Power Cord x 1
- SFP Dust-proof Cap x 2

If any item is found missing or damaged, please contact your local reseller for replacement.

2. Requirements

- Workstations running Windows XP/2003/Vista/7/8/10/2008/2012, MAC OS X or later, Linux, UNIX, or other platforms are compatible with TCP/IP protocols.
- Workstations are installed with Ethernet NIC (Network Interface Card)
- **Serial Port Connection** (Terminal)
 - The above Workstations come with COM Port (DB9) or USB-to-RS232 converter.
 - The above Workstations have been installed with terminal emulator, such as Hyper Terminal included in Windows XP/2003.
 - Serial cable -- one end is attached to the RS232 serial port, while the other end to the console port of the PoE Managed Switch.
- **Ethernet Port Connection**
 - Network cables -- Use standard network (UTP) cables with RJ45 connectors.
 - The above PC is installed with Web Browser and JAVA runtime environment plug-in.



Note

It is recommended to use Internet Explore 8.0 or above to access the PoE Managed Switch. If the Web interface of the PoE Managed Switch is not accessible, please turn off the anti-virus software or firewall and then try it again.

3. Terminal Setup

To configure the system, connect a serial cable to a **COM port** on a PC or notebook computer and to RJ45 type of console port of the PoE Managed Switch.

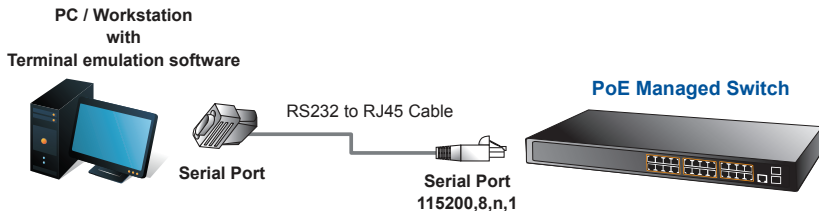


Figure 3-1: PoE Managed Switch Console Connectivity

A terminal program is required to make the software connection to the PoE Managed Switch.

1. Run terminal program on the OS.
2. When the following screen appears, make sure that the COM port should be configured as:

- Baud: 115200
- Data bits: 8
- Parity: None
- Stop bits: 1
- Flow control: None

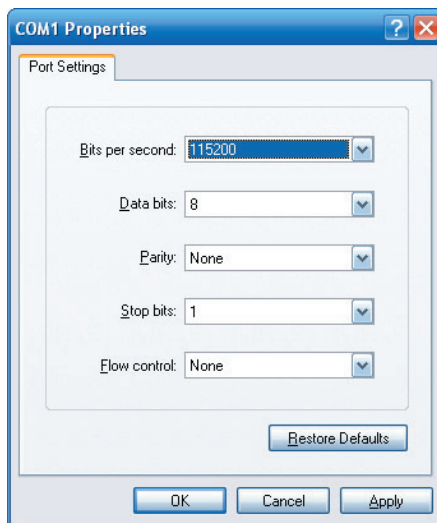


Figure 3-2: COM Port Configuration

4. Logon to the Console

Once the terminal is connected to the device, power on the PoE Managed Switch and the terminal will **run self testing procedures**. Then, the following message asks to login user name and password. The factory default user name and password are shown as follows and the login screen in Figure 4-1 appears.

```
Username: admin
Password: admin
```



Note

The following screenshot of switch command line interface uses the GS-4210-24P2S as an example.

```
Switch Command Line Interface

Press any key to continue

Username: admin
Password: *****
GS-4210-24P2S # _
```

Figure 4-1: PoE Managed Switch Console Login Screen

The user can now enter commands to manage the PoE Managed Switch. For a detailed description of the commands, please refer to the following chapters.



Note

1. For security reason, please change and memorize the new password after this first setup.
2. Only accept command in lowercase letter under console interface.

5. Configuring IP Address via the Console

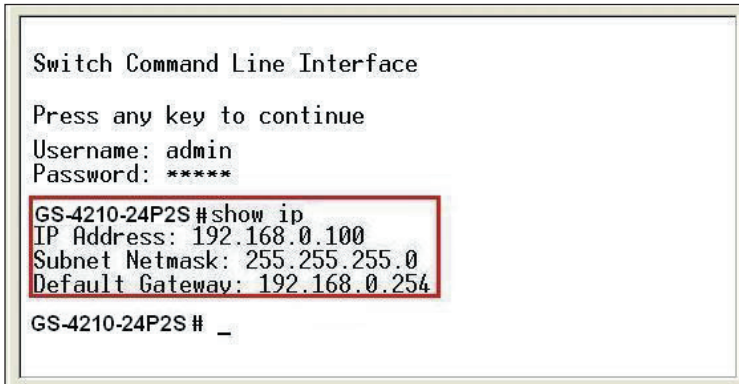
The PoE Managed Switch is shipped with default IP address as follows:

```
IP Address: 192.168.0.100
Subnet Mask: 255.255.255.0
```

To check the current IP address or modify a new IP address for the PoE Managed Switch, please use the procedures as follows:

■ Display of the current IP address

1. On "GS-4210-24P2S#" prompt, enter "show ip".
2. The screen displays the current IP address, Subnet Mask and Gateway shown in Figure 5-1.

A screenshot of a terminal window titled "Switch Command Line Interface". The text displayed is as follows:

```
Switch Command Line Interface
Press any key to continue
Username: admin
Password: *****
GS-4210-24P2S#show ip
IP Address: 192.168.0.100
Subnet Netmask: 255.255.255.0
Default Gateway: 192.168.0.254
GS-4210-24P2S# _
```

The output lines for the "show ip" command are enclosed in a red rectangular box.

Figure 5-1: IP Information Screen

■ Configuration of the IP address

3. On "GS-4210-24P2S#" prompt, enter "configure".
4. On "GS-4210-24P2S (config)#" prompt, enter the following command and press <Enter> as shown in Figure 5-2.

```
GS-4210-24P2S (config)# ip address 192.168.1.100 mask 255.255.255.0
GS-4210-24P2S (config)# ip default-gateway 192.168.1.254
```

The previous command would apply the following settings for the PoE Managed Switch.

IP Address: 192.168.1.100

Subnet Mask: 255.255.255.0

Gateway: 192.168.1.254

```
GS-4210-24P2S# show ip
IP Address: 192.168.0.100
Subnet Netmask: 255.255.255.0
Default Gateway: 192.168.0.254
GS-4210-24P2S# configure
GS-4210-24P2S (config)# ip address 192.168.1.100 mask 255.255.255.0
GS-4210-24P2S (config)# ip default-gateway 192.168.1.254
GS-4210-24P2S (config)#
```

Figure 5-2: Setting IP Address Screen

5. Repeat Step 1 to check if the IP address is changed.

If the IP is successfully configured, the PoE Managed Switch will apply the new IP address setting immediately. You can access the Web interface of PoE Managed Switch through the new IP address.



Note

If you are not familiar with console command or the related parameter, enter "?" anytime in console to get the help description.

6. Saving the Configuration via the Console

In switch, the running configuration file stores in the RAM. In the current version, the running configuration sequence running-config can be saved from the RAM to FLASH by **save** command or **copy running-config startup-config** command, so that the running configuration sequence becomes the startup configuration file, which is called configuration save.

1. On "GS-4210-24P2S#" prompt, enter "copy running-config startup-config" as shown in Figure 6-1.

```
GS-4210-24P2S# configure
GS-4210-24P2S(config)# ip address 192.168.1.100 mask 255.255.255.0
GS-4210-24P2S(config)# ip default-gateway 192.168.1.254
GS-4210-24P2S(config)# exit
GS-4210-24P2S# copy running-config startup-config
Success
GS-4210-24P2S# _
```

Figure 6-1: Saving the Configuration Screen

7. Starting Web Management

The following shows how to start up the **Web Management** of the PoE Managed Switch. Note the PoE Managed Switch is configured through an Ethernet connection. Please make sure the manager PC must be set to the same **IP subnet address**.

For example, the default IP address of the PoE Managed Switch is **192.168.0.100**; then the manager PC should be set to **192.168.0.x** (where x is a number between 1 and 254, except 100) and the default subnet mask is 255.255.255.0.

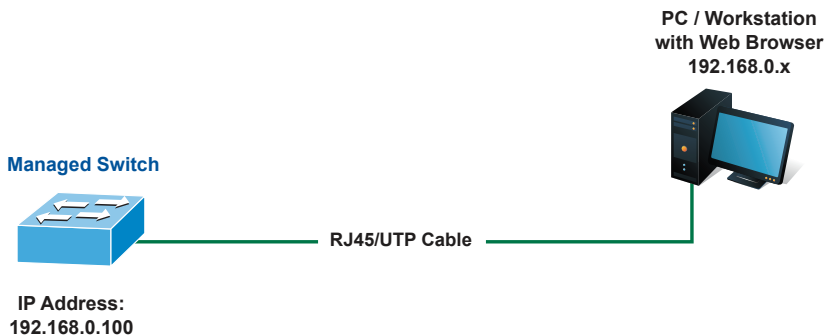


Figure 7-1: IP Management Diagram

■ Logging in to the PoE Managed Switch

1. Use Internet Explorer 8.0 or above Web browser and enter IP address **<http://192.168.0.100>** to access the Web interface.

2. When the following dialog box appears, please enter the default user name and password "admin". The login screen in Figure 7-2 appears.

Default Username: **admin**
Default Password: **admin**



Figure 7-2: Web Login Screen

3. After entering the password, the main screen appears as Figure 7-3 shows.

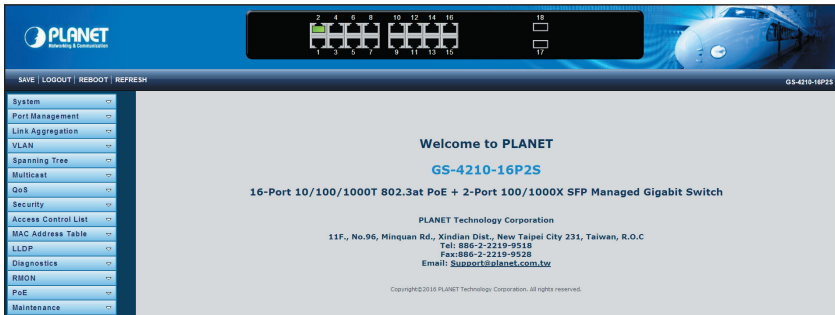
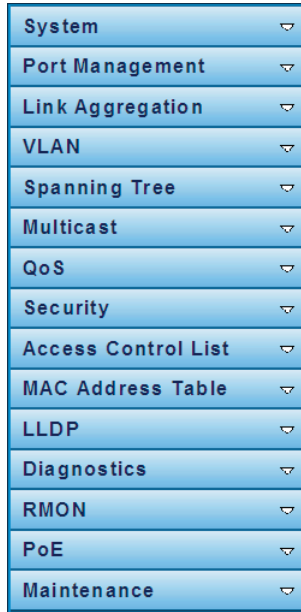


Figure 7-3: Web Main Screen of PoE Managed Switch

The Switch Menu on the left of the Web page lets you access all the commands and statistics the PoE Managed Switch provides.



System	▼
Port Management	▼
Link Aggregation	▼
VLAN	▼
Spanning Tree	▼
Multicast	▼
QoS	▼
Security	▼
Access Control List	▼
MAC Address Table	▼
LLDP	▼
Diagnostics	▼
RMON	▼
PoE	▼
Maintenance	▼

Figure 7-4: Switch Menu

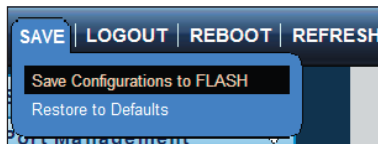
Now, you can use the Web management interface to continue the Switch management. Please refer to the user's manual for more.

8. Saving Configuration via the Web

In the PoE Managed Switch, the running configuration file stores in the RAM. In the current version, the running configuration sequence of running-config can be saved from the RAM to FLASH by **"Save Configurations to FLASH"** function, so that the running configuration sequence becomes the startup configuration file, which is called configuration save.

To save all applied changes and set the current configuration as a startup configuration. The startup-configuration file will be loaded automatically across a system reboot.

1. Click **"SAVE > Save Configurations to FLASH"** to login "Configuration Manager" Page.



2. Press the **"Apply"** button to save running configuration to startup configuration.

Configuration Manager	
Save Configuration	
Source File	<input checked="" type="radio"/> Running configuration <input type="radio"/> Startup configuration <input type="radio"/> Backup configuration
Destination File	<input checked="" type="radio"/> Startup configuration <input type="radio"/> Backup configuration
<input type="button" value="Apply"/>	

9. Recovering Back to Default Configuration

- IP Address has been changed or admin password has been forgotten –

To reset the IP address to the default IP Address “192.168.0.100” or reset the login password to default value, press the **reset button** on the front panel for about **10 seconds**. After the device is rebooted, you can login the Web interface management within the same subnet of 192.168.0.xx.

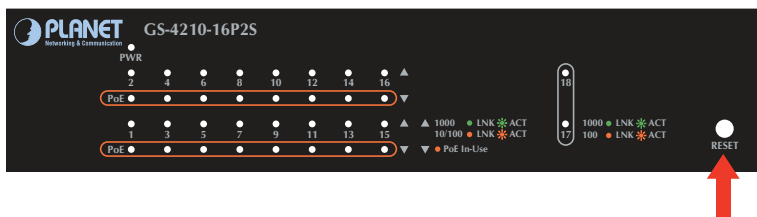


Figure 9-1: GS-4210-16P2S Reset Button

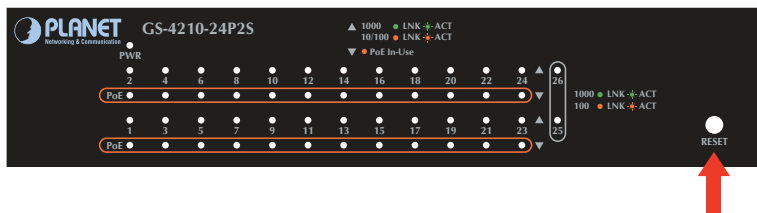


Figure 9-2: GS-4210-24P2S Reset Button

10. Customer Support

Thank you for purchasing PLANET products. You can browse our online FAQ resource and User's Manual on PLANET Web site first to check if it could solve your issue. If you need more support information, please contact PLANET switch support team.

PLANET online FAQ:

<http://www.planet.com.tw/en/support/faq.php?type=1>

Switch support team mail address:

support_switch@planet.com.tw

GS-4210-16P2S/GS-4210-24P2S User's Manual:

<http://www.planet.com.tw/en/support/download.php?type1=1&model=&type=3>



Copyright © PLANET Technology Corp. 2017.

Contents are subject to revision without prior notice.

PLANET is a registered trademark of PLANET Technology Corp. All other trademarks belong to their respective owners.

