

200M Powerline Ethernet Bridge



With PLANET powerline communication products, the power outlets are no longer to be just as the power receptacles but can also be the network connection point. The PLANET PL-501 is a Powerline to Ethernet Bridge with a RJ-45 Ethernet interface which directly connects to your computer's network card. To share the network connection in the house or office, you will not need to spend time and money to install Ethernet cabling but simply plug the PL-501 into the power outlets anywhere in the house or office. Through the multiple outlets in every room, the PL-501 allows you to use the existing electrical wiring to build the network connection in the entire house or office without the clutter of messy wiring.

The PL-501 provides the advantages of cost effectiveness, easy installation, and no need of additional wire. It offers the speed up to 200Mbps data rate which is the highest speed in powerline data transmission. Moreover, the PL-501 features 128-Bit AES data encryption that improves the network security and reliability, and protects the data leaked by anyone else.

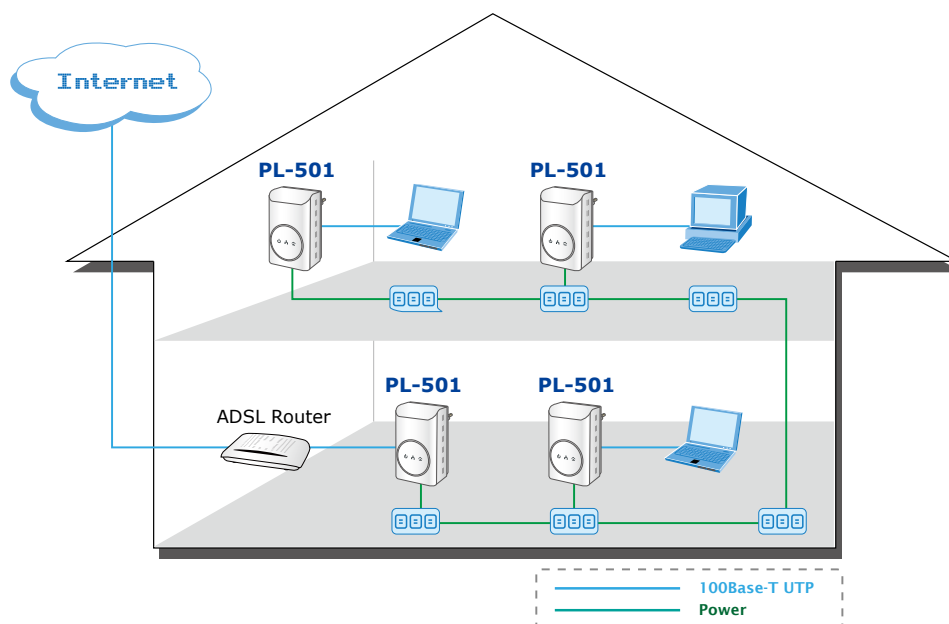
KEY FEATURES

- HomePlug AV compliant
- Direct attached to power outlets
- Connect 10/100 Ethernet network to Powerline network
- Up to 200Mbps data rate on the powerline
- Up to 200 meters between powerline nodes
- 128-Bit AES link Encryption for security and reliability
- Built-in QoS
- Up to 64 bridged devices per station
- IGMP snooping for multicast to multiple uni-cast mapping

APPLICATIONS

High Speed Ethernet Connection via Home's Power Supply

PLANET provides several types of powerline products to meet various Ethernet applications at home. As illustrated, users may connect an IP STB or a PC to the PL-501 to deploy the high speed Ethernet network in their house freely. With the PLANET powerline products, no messy network cables and additional switches are required at home and users can entirely enjoy home network from now on.



SPECIFICATION

Product	200Mbps Powerline Ethernet Bridge
Model	PL-501
Hardware Specification	
Standard	HomePlug AV compliant IEEE 802.3 10Base-T IEEE 802.3u 100Base-TX
Ports	One RJ-45 port
Speed	UP to 200Mbps
Encryption	128-Bit AES encryption
Modulation	1024 / 256 / 64 / 16 / 8 QAM, QPSK, BPSK and ROBO
Forward Error Correction	Turbo Codes
Channel Access	TDMA, CSMA, CA
LED	Power, Ethernet, Data
Powerline Frequency Band	2MHz to 30MHz
Environment Specifications	
Video Encoder	Temperature: 0~40 Degree C Relative Humidity: 10~90% (non-condensing)
Storage	Temperature: -10~70 Degree C Relative Humidity: 5~95% (non-condensing)
Power Supply	100~240V AC, 50~60Hz
Dimension (W x D x H)	55 x 90 x 34 mm
Weight	108 g
Emission	FCC, CE

ORDERING INFORMATION

PL-501-EU	200M Powerline Ethernet Bridge (EU type direct-attached)
PL-501-UK	200M Powerline Ethernet Bridge (UK type direct-attached)
PL-501-US	200M Powerline Ethernet Bridge (US type direct-attached)
PL-501-KIT-EU	200M Powerline Ethernet Bridge KIT (Two Devices Pack, EU type)
PL-501-KIT-UK	200M Powerline Ethernet Bridge KIT (Two Devices Pack, UK type)
PL-501-KIT-US	200M Powerline Ethernet Bridge KIT (Two Devices Pack, US type)