

Gigabit SSL VPN Security Router



As Internet becomes essential for business, the crucial solution to prevent your Internet connection from failure is to have more than one connection. PLANET SG-4800 is the **Gigabit SSL VPN Security Router** ideal to help the SMBs increase the broadband network performance and reduce the risks of potential shutdown if one of the Internet connections fails. The SG-4800 can monitor each WAN link status and automatically activate backup links when a failure is detected. The detection is based on the configurable target Internet addresses.

Network Efficiency Improvement with Load-Balancing

The SG-4800 allows you to perform load-balancing by distributing the traffic through three or four WAN connections. In Outbound Load Balancing, the network sessions are assigned based on the user configurable load balancing mode, including "Auto Load Balance", "Unbinding WAN Balance" and "Strategy Routing". Users can also configure which IP or TCP/UDP type of traffic use which WAN port to connect. The Inbound Load Balancing is for enterprise's internal server to reduce the server loading and the risks of system crash so that the SG-4800 helps to improve the server working efficiency.

Strong Protection for Network Security

In addition to providing Multi-Homing functions, the SG-4800 Gigabit SSL VPN Security Router integrates a complete security solution in one box. It provides the policy-based firewall, content filtering function and **VPN connectivity** including SSL, IPSec, and PPTP VPN. The SSL VPN function supports up to **60 SSL VPN connection tunnels**. The IPSec VPN feature provides with **3DES** and **AES** encryption make it a perfect product for your network security. By applying the SG-4800, there is no need of integrating different security products on the network and worry free from complicated connections and settings.

QoS Bandwidth Management

Besides offering easy yet powerful bandwidth management functions, the SG-4800 features Smart QoS with dynamic bandwidth management to automatically control P2P, video downloading and other bandwidth hogging in order to avoid bandwidth insufficiency. It helps the network administrators better allocate network resources based on business priorities, as well as to shape and control bandwidth usage by prioritizing different persons/groups or applications.

Easy Remote Management

The SG-4800 provides embedded Mirror Port to connect with the monitoring devices for online behavior monitoring. It also supports secure remote management via web browser with protection of user authentication.

KEY FEATURES

PHYSICAL PORT

- 8 x 10/100/1000 Base-T RJ-45, configurable with LAN 1 (Mirror Port)
- 4 x 10/100/1000 Base-T RJ-45 WAN port
- 1 x 10/100/1000 Base-T RJ-45 DMZ port

MULTI-WAN FUNCTION

- Inbound / Outbound Load Balance: by session and by IP
- Bandwidth expansion with 4 Gigabit WAN ports
- Multi-WAN auto line backup

IP ROUTING FEATURE

- Dynamic Route RIP v1/v2
- Static Route
- Strategy Routing

BANDWIDTH MANAGEMENT

- Guaranteed Bandwidth
- Max. Bandwidth
- Session Limit
- Port-Based QoS

FIREWALL SECURITY

- Stateful Packet Inspection (SPI) Firewall
- Denial of Service (DoS) prevention
- IP & Port filtering
- Block Website by Keyword, Content Filter
- Firewall detection: Ping of Death, SYN Flooding, Land attack, IP Spoofing
- Supports DMZ Host to protect your network
- Prevents ARP Attack on LAN

VPN FEATURE

- Configure Concurrent Tunnels: 200 IPSec + 60 PPTP + 60 SSL VPN or other combinations within the memory's limitation
- IPSec, PPTP and L2TP Pass through
- Supports IPSec
 - IPSec Hardware acceleration
 - IPSec Encryption DES / 3DES / AES128 / AES192 / AES256
 - IPSec Authentication MD5 / SHA1
- VPN Hub

- Supports SSL VPN
 - 10 full set SSL VPN tunnel / 50 Virtual Passage SSL VPN Client
 - Remote Desktop Access
 - Terminal Access: Telnet, SSH
 - Authentication: Radius, LDAP, Microsoft Active Directory and NT Domain Name
 - SSL Encryptions: 128bit SHA1 (DES-CBC-SHA)
 - Certificate Server: RSA, PKI, Digital Certificate
 - Host Check: Virus Scan, Personal Firewalls, OS Patch
 - Logging and monitoring: Syslog logging of SSL VPN events by user, service and type of event

NETWORKING

- DHCP Server (supports class C), client, dynamic IP, static IP, IP Grouping support
- Multiple DHCP Servers support multiple Subnet (supports 4 sets of Class C)

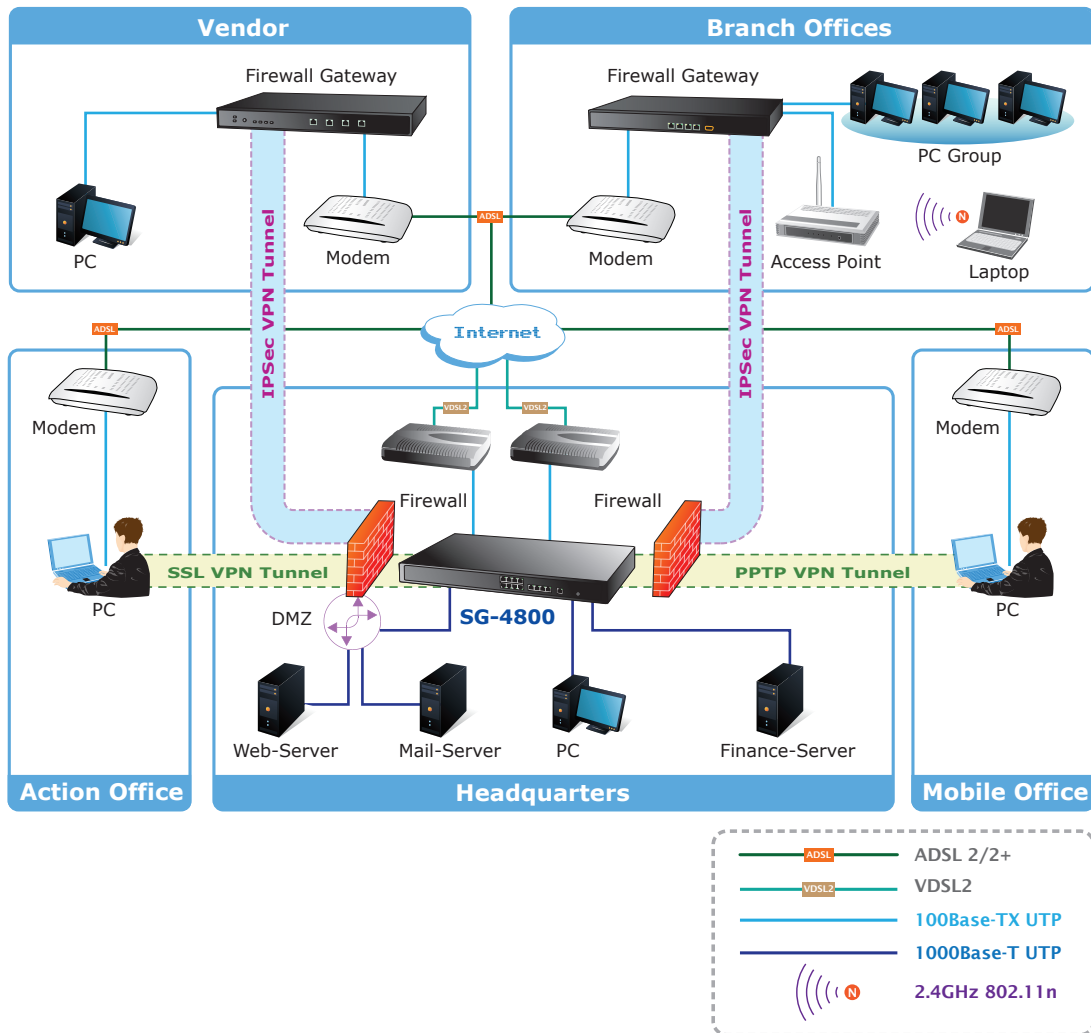
- PPPoE / Static IP / DHCP Client
- Protocol: TCP/IP, ARP, ICMP, FTP/TFTP, IPv4, IPv6
- NAT with port forwarding (Virtual Server)
- DNS Relay
- DDNS: supports DynDNS, 3322
- Password protected configuration or management sessions for web access
- Port Management – Speed / Duplex / Auto Negotiation / VLAN
- Transparent Bridge

NETWORK MANAGEMENT

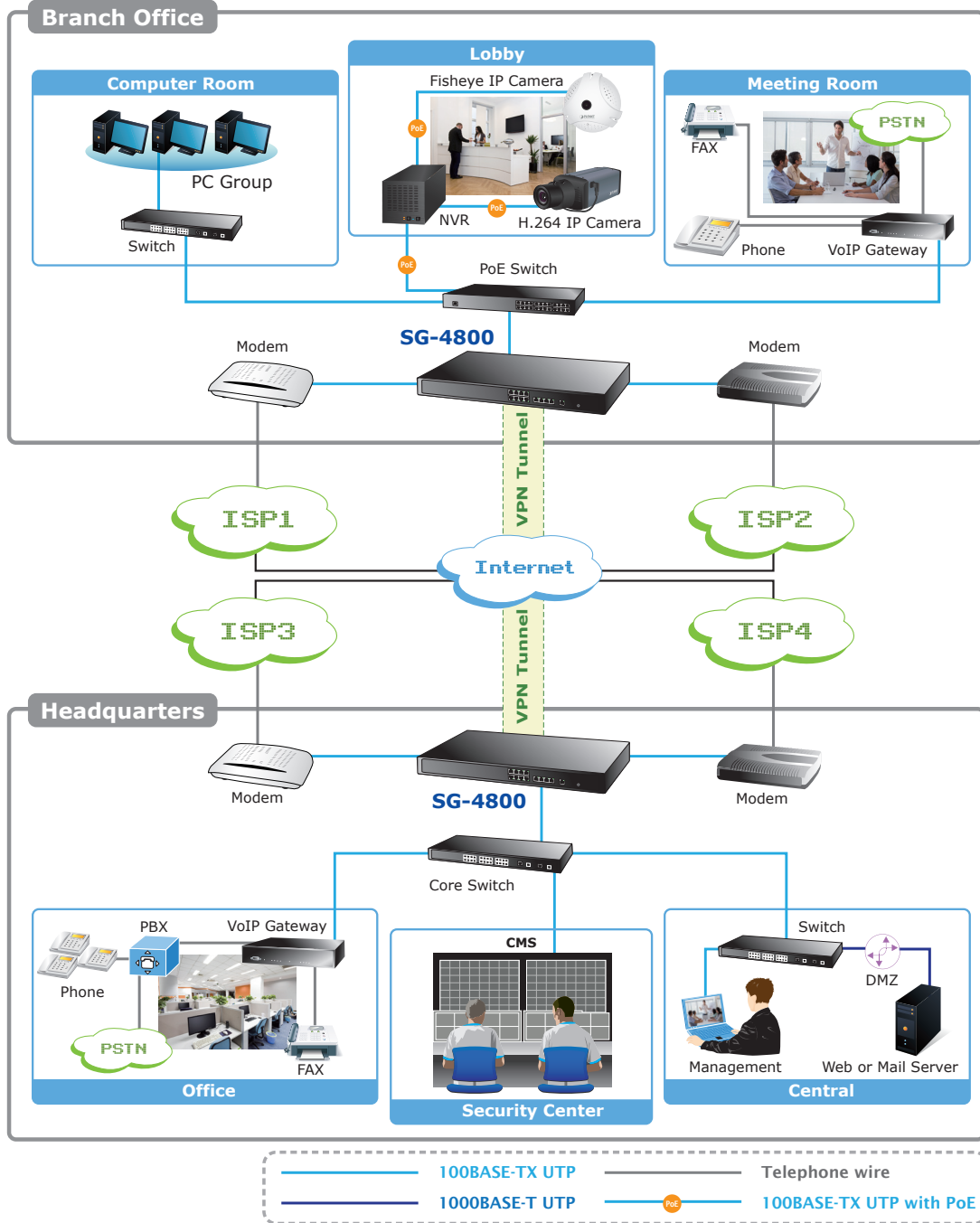
- Comprehensive web based management and policy setting
- SNMP v1/v2c
- Monitoring, Logging, and Alarms of system activities
- Firmware upgrade through Web browser

APPLICATIONS

PLANET Multi-Homing VPN Security Router, SG-4800 has the powerful firewall functions including SPI Firewall DoS prevention, IPSec and PPTP VPN solutions. The SG-4800 provides a flexible way of secured data communication for Branches, Venders, and/or mobile workers to connect to the corporate headquarter.



The SG-4800 can connect the multiple WANs by different ISPs. It can create a stable and qualified VPN connection for many important applications such as VoIP, Video Conference and data transmission.



SPECIFICATION

Product	Gigabit SSL VPN Security Router	
Model	SG-4800	
Hardware		
Ethernet	LAN	8 x 10/100/1000Mbps RJ-45
	WAN	4 x 10/100/1000Mbps RJ-45
	DMZ	1 x 10/100/1000Mbps RJ-45
Button	Reset	1 x Reset button for factory default settings
	Power	1 x Power on/off switch
Operating Environment	Temperature: 0 ~ 50 Degree C Relative Humidity: 10~85% (non-condensing)	
Dimension (W x D x H)	440 x 254 x 43.5 mm	
Power	100~240V AC, 50~60 Hz, max 0.8A	
Regulatory	FCC Class A, CE	
Software		
Multi-WAN Function	Inbound / Outbound Load Balance: by session and by IP Protocol Binding Network Service Detection	
Routing	Dynamic Route RIP v1/v2 Static Route	
System Performance	Concurrent session: 50000 Firewall performance: 1Gbps Corporation Size: SMB (clients 200~250) 3DES performance: 270Mbps	
Bandwidth Management	Guaranteed Bandwidth Max Bandwidth Session Limit Port-Based QoS	
Firewall Security	NAT One-to-One NAT Multiple-to-One NAT Stateful Packet Inspection (SPI) Firewall Denial of Service (DoS) prevention IP & Port filtering Block Website by Keyword, Content Filter Firewall detection: Ping of Death, SYN Flooding, Land attack, IP Spoofing Email Alert for Hacker Attack IP&MAC Binding Supports DMZ Host to protect your network Prevents ARP Attack on LAN	
Networking	Configurable DMZ DHCP Server (supports class C), client, dynamic IP, static IP, IP Grouping support Multiple DHCP Server (supports 4 sets of Class C) PPPoE / Static IP / DHCP Client Multiple Subnet Protocol: TCP/IP, ARP, ICMP, FTP/TFTP, IPv4, IPv6 NAT with port forwarding (Virtual Server) DNS Relay DDNS: Supports DynDNS, 3322 Password protected configuration or management sessions for web access Port Management – Speed / Duplex / Auto Negotiation / VLAN Transparent Bridge	
Network Management	Comprehensive web based management and policy setting SNMP v1/v2c Monitoring, Logging, and Alarms of system activities Firmware upgrade through Web browser	

Network Management		Comprehensive web based management and policy setting SNMP v1/v2c Monitoring, Logging, and Alarms of system activities Firmware upgrade through Web browser
VPN Support	PPTP VPN	60 PPTP VPN Tunnels
	IPSec VPN	200 IPSec VPN Tunnels IPSec Hardware acceleration Up to 2 Group VPNs support Friendly VPN Tunnel Management IKE: Pre-Shared keys IPSec Encryption DES / 3DES / AES128 / AES192 / AES256 IPSec Authentication MD5 / SHA1 Supports PMTU NAT Traversal Connects on Demand DPD detection VPN Hub IP by DNS Resolved View Log
	SSL VPN	<ul style="list-style-type: none"> ■ 10 full set SSL VPN tunnel / 50 Virtual Passage SSL VPN Client ■ SSL Hardware acceleration ■ Remote Desktop Access ■ HTTP and HTTPs Proxy ■ FTP and Windows Network File Sharing ■ Terminal Access: Telnet, SSH ■ Authentication: Radius, LDAP, Microsoft Active Directory and NT Domain Name ■ Platform supports Windows / Linux / MAC ■ SSL Encryptions: 128bit SHA1 (DES-CBC-SHA) ■ Encrypted cookies ■ Web cache cleaner ■ Certificate Server: RSA, PKI, Digital Certificate ■ Host Check: Virus Scan, Personal Firewalls, OS Patch ■ Role based management ■ Access Policy Management ■ Logging and monitoring: Syslog logging of SSL VPN events by user, service and type of event ■ Customized User Portal: Allows Portal Layout, Available Services to be customized ■ Single sign-on: Allows Single Sign-On for accessing multiple private network resources ■ Group and Global Bookmark Support: Enables users to access resources without needing to remember hostnames or IP addresses ■ Tunnel quantity upgrade mechanism
	VPN Pass through	IPSec, PPTP, L2TP Pass through

ORDERING INFORMATION

SG-4800	Gigabit SSL VPN Security Router
----------------	---------------------------------

RELATED PRODUCTS

VRT-311S	Broadband VPN Router
VRT-402N	802.11n Wireless VPN/Firewall Router
VRT-420N	802.11n Multi-Homing Broadband Router
MH-3400	Gigabit Multi-Homing VPN Security Router
SG-1000	VPN Security Gateway
CS-1000	Multi-Homing Content Security Gateway
CS-2001	UTM Content Security Gateway