



Application Guide

Delivering a variety of efficient networking applications

Hotels & Resorts

Comprehensive networking equipment to satisfy customer comfort and management efficiency

PLANET hotels and resorts application provides a comprehensive collection of products to satisfy the comfort and security of guests and at the same time makes operation and management efficient. A wide range of devices including management switch, IP-PBX, IP phone, wireless AP controller, indoor and outdoor APs, SIP broadcasting system and SIP door intercom are reliable to ensure high-quality data, voice and power communications for the whole hospitality industry.

Network Infrastructures

Industrial 5G NR Cellular Wireless Gateway

ICG-2515W-NR

- Global 5G NR (NSA/SA)/4G LTE network with dual SIM design for cellular network redundancy
- Concurrent dual-band connectivity in 2.4GHz (600Mbps) and 5GHz (1200Mbps)
- 4 10/100/1000T LAN ports and 1 10/100/1000T WAN port
- 2 DI and DO and 1 serial port (RS485) for Modbus applications
- SSL VPN and robust hybrid VPN (IPSec/PPTP/L2TP over IPSec)
- Full security with VLAN, NAT, DMZ, routing, firewall and IP/MAC/port filtering



L3 24-Port 802.3bt PoE + 4-Port 10G LCD Switch

GS-6320-24UP2T2XV

- 2.4-inch color LCD touch screen with management functions
- Layer 3 OSPFv2 dynamic routing, IPv4/IPv6 static IP routes
- 2 10GBASE-T/N-BASE-T RJ45 ports
- 36-60V DC and 100-240V AC redundant power for system
- ITU-T G.8032 ERPS (Ethernet Ring Protection Switching)
- Cybersecurity can be enhanced with SNMPv3, SSH and TLS features



Wireless

Dual Band 802.11ax 1800Mbps In-wall Wireless Access Point

WDAP-W1800AXU

- Supports MU-MIMO, OFDMA, seamless roaming, beamforming and BSS coloring
- Simultaneous dual-band connectivity at 2.4GHz 600Mbps and 5GHz 1200Mbps
- Supports IPv6 and port VLAN
- Supports captive portal and RADIUS Server/Client
- USB Type C, 5V DC, 0.5A output
- Centrally managed by PLANET NMS controller and PLANET CloudViewerPro app



Dual Band 802.11ax 3000Mbps Ceiling-mount Wireless AP

WDAP-C3000AX

- Supports Wi-Fi mesh wireless network with Wizard
- Supports MU-MIMO, OFDMA and seamless roaming
- Simultaneous dual-band connectivity in 2.4GHz (600Mbps) and 5GHz (2400Mbps)
- Gigabit Ethernet Port with 802.3at PoE+ PD compliant
- Supports multiple VLANs mapping to multiple SSIDs
- Centrally managed by PLANET NMS controller and CloudViewerPro app



Network Management

Universal Network Management Controller with LCD Touch Screen (10"/12")

NMS-1000V-10/12

- Stylish TFT-LCD touch screen display and aluminum die-cast front bezel and chassis
- Auto discovery of up to 1024 devices via web interface
- Central provisioning and remotely control over each managed device
- A topology view of network devices by LLDP protocol
- All-new dashboard for monitoring traffic and PoE usage
- Setup Wizard, alert popup message and e-mail alarm notification



Surveillance

H.265+ 4MP Smart IR Dome IP Camera

ICA-4480

- 1/3" progressive scan CMOS sensor and 25-meter smart IR illuminators
- Offers multi-stream video encoding in formats such as H.264(+)/H.265(+)/MJPEG/AVI.
- 5 backlight compensation (BLC) modes: Left, Right, Up, Down, Middle.
- Digital WDR (DWDR) and 3-dimensional noise reduction (3DNR)
- Supports IPv6, QoS, IEEE 802.1X network functions, and TLS
- Designed with an IP67-rated metal housing and cable management bracket



H.265+ 4MP Smart IR Bullet IP Camera

ICA-3480

- Full color bullet type with 1/3" progressive scan CMOS sensor
- H.265+/H.265/H.264+/H.264 compression
- Built-in smart IR illuminators, effective up to 25m
- Supports 5 backlight compensation (BLC) modes: Left, Right, Up, Down, Middle
- Supports digital WDR (DWDR)
- IP67-rated metal housing with cable management



H.265 16-ch 4K Network Video Recorder

NVR-1600

- H.265/H.264 and dual streaming compression technology
- Up to 4K resolution recording and playback for clear monitoring
- PVMS and smart event for detailed monitoring
- Multiple browsers and languages supported
- Remote live viewing through Smart App for 24/7 viewing



Voice Communications

High Definition Color PoE IP Phone

VIP-1140PT

- 2.4-inch WVA color LCD monitor
- 3-line key with color LED
- 4 SIP identities
- Wideband Opus HD audio
- Power over Ethernet (PoE) compliant
- QoS, TR069, auto-provisioning and multi-language



1080p SIP Vandalproof Door Phone with RFID and PoE

HDP-1261PT

- With high protection level of IP66 and IK07, temperature range from -40°C to 70°C
- Support to open the door with RFID/IC cards, NFC, indoor switch, remote DTMF, timed open door
- Built-in 2MP wide-angle camera with infrared night-vision feature
- Compatible with SIP and ONVIF protocols
- Built-in maximum 128GB capacity TF card slot for image storage
- HD voice speech quality with built-in 2.5W speaker and Acoustic Echo Canceller



7-inch SIP Indoor Touch Screen PoE Video Intercom with Built-in Wi-Fi

VTS-700WP

- Powered by PoE or external source
- 8-zone alarm interface available for security control
- Short Circuit Output x 1/Short Circuit Input x 1/RS-485 x1
- Built-in Wi-Fi 2.4G/5G
- Standard SIP protocol compatible with modern IP Intercom systems
- Real-time image (1080P) monitoring of home and community public cameras



Outdoor Facility



H.265+ 4MP Smart IR
Bullet IP Camera
ICA-3480

Control Room



L3 24-Port 802.3bt PoE
+ 2-Port TP 10G +2 Port
Fiber 10G LCD Switch
GS-6320-24UP2T2XV



VPN Security Gateway
VR-300FP



H.265 16-ch 4K Network
Video Recorder
NVR-1600



Internet Telephony PBX
System
IPX-2200



7-inch Indoor Touch Screen
PoE Video Intercom
VTS-700WP



Universal Network
Management Controller with
LCD Touch Screen (10"/12")
NMS-1000V-10/12

Guestrooms



HD Color PoE IP Phone
VIP-1140PT

Corridor



Dual Band 802.11ax 3000Mbps
Ceiling-mount Wireless AP
WDAP-C3000AX

Hotel Lobby



H.265+ 4MP Smart IR
Dome IP Camera
ICA-4480

Wi-Fi Mesh



Dual Band 802.11ax 3000Mbps
Ceiling-mount Wireless AP
WDAP-C3000AX

Office



Dual Band 802.11ax 1800Mbps
In-wall Wireless Access Point
WDAP-W1800AXU

Entrance



1080p SIP Door Intercom w/RFID
HDP-1261PT

Shuttle Bus



Industrial 5G NR Cellular
Wireless Gateway
ICG-2515W-NR

Digital Campus

Efficient management and extension of campus network capacity, mobility and security

As technology advances rapidly these days, how to create an efficient and reliable network application became an important issue for campus and educational network deployment. PLANET campus network solution offers a highly-integrated series of products ranging from wireless LAN, network backbone switches, network security, IP Surveillance to VoIP products that are closely interconnected to ensure the mobility to access the internet from anywhere, the security of the wired and the wireless connections and the efficiency of campus IoT structure.

Network Infrastructures

L3 24-Port 802.3bt PoE + 4-Port 10G LCD Switch **GS-5220-24UPL4XV**

- 24-Port 10/100/1000T 802.3bt PoE++
- 2.4-inch color LCD touch screen with management functions
- ERPS ring data recovery time <10ms
- Supports PoE power up to 95 watts (Total budget: 600W)



Layer 3 24-Port 10G SFP+ + 4-Port 100G QSFP28 Managed Switch **XGS-6350-24X4C**

- Four 40G/100GbE QSFP28 ports and 24 1G/10G SFP+ ports
- IGMP Snooping v1/v2/v3 and PIM-DM/SM
- IEEE 802.1Q, private VLAN and GVRP for VLAN management
- IEEE 802.1d/1w1s Spanning Tree protocol



24-port 1000X + 4-port 10G Managed Switch with DC Redundant Power **GS-6311-16S8C4XR**

- 10/100/1000BASE-T port x 8, shared with Port 1 to Port 8
- 100/1000BASE-X SFP Slots x24
- 10GBASE-X SFP+ Slots x 4
- IP routing protocol supports RIP v1/v2, OSPFv2
- SNMP v1, v2c and v3, SSHv2/TLS v1.2 secure access
- 100~240V AC, 50/60Hz and 36~72V DC redundant power



Wireless

Dual Band 802.11ax 3000Mbps Ceiling-mount Wireless AP **WDAP-C3000AX**

- Supports Wi-Fi mesh wireless network with Wizard
- Supports MU-MIMO, OFDMA and seamless roaming
- Simultaneous dual-band connectivity in 2.4GHz (600Mbps) and 5GHz (2400Mbps)
- Gigabit Ethernet Port with 802.3at PoE+ PD compliant
- Supports multiple VLANs mapping to multiple SSIDs
- Centrally managed by PLANET NMS controller and CloudViewerPro app



Dual Band 802.11ax 3000Mbps Outdoor Wireless AP **WDAP-3000AX**

- Supports Wi-Fi mesh wireless network with Wizard
- Simultaneous dual-band connectivity in 2.4GHz (600Mbps) and 5GHz (2400Mbps)
- Supports MU-MIMO, OFDMA and seamless roaming
- 20KV surge protection for wired cable interface
- Supports IP67 rating, operating in temperature ranging from -40 to 70 degrees C
- Centrally managed by PLANET NMS controller and PLANET CloudViewerPro app



Network Management

Enterprise-class Universal Network Management Controller **NMS-500**

- Auto discovery of up to 512 devices via web interface
- Central provisioning and remotely controls over each managed device
- A topology view of network devices by LLDP protocol
- SMTP alarm and syslog for managed devices in real-time status
- Smart AP Controller up to 512 APs
- Easy deployment with map positioning
- Dashboard and chart design for all information in one



Surveillance

H.265 5 Mega-pixel Smart IR Bullet IP Camera with Remote Focus and Zoom **ICA-M3580P**

- 1/2.8" 5 Megapixel progressive scan STARVIS™ CMOS
- 2.7-13.5mm 5X motorized zoom auto focus lens
- H.265(+)/H.264(+)/JPEG/AVI/MJPEG triple-stream encoding
- WDR, 3DNR, ICR, PLANET DDNS & Easy DDNS
- PoE & ONVIF compliant for interoperability
- Built-in smart IR illuminators, effective up to 40 meters
- IP67-rated housing with cable management bracket



16-Slot Managed Media Converter Chassis with Redundant Power Supply System **MC-1610MR/XST-705A**

- Console/Telnet/Web/SNMP management
- 16 hot-swappable modular converter management
- TS-1000/802.3ah OAM remote terminal management
- Two power slots for redundant power, optional AC/-48V DC supplies



Voice Communications

High Definition Touch Color Screen Smart Media Android SIP Conference Phone **ICF-1900**

- 7-inch color touch screen with Android 9.0 OS
- Plug and Play optional 1080p USB camera with 720P 30fps H.264 video call
- IETE SIP compliant with Transport Layer Security
- Up to 20 SIP lines with 112 one-touch DSS keys
- Dual Gigabit and IEEE 802.3af/at PoE compliant
- Built-in Bluetooth 4.2 and 2.4G/5G Wi-Fi
- Wideband G.722 HD and Opus audio codec with handset and hands-free function



720p SIP Multi-unit Apartment Vandalproof Door Phone with RFID and PoE **HDP-5260PT**

- 720p camera has high-performance HD video
- G.722 coding produces clearer HD voice quality
- IP65 and IK10 enclosure
- Supports the most popular and compatible standard SIP protocol
- Supports video intercom, door phone and single device paging
- Access control by IP phone, DTMF code and RFID card



High Definition Color PoE Gigabit IP Phone **VIP-1260PT**

- IETE SIP compliant with Transport Layer Security
- Wideband G.722 HD and Opus audio
- 2.8-inch color LCD with Multi-language display
- Dual Gigabit and IEEE 802.3af/at PoE compliant



Academic Classroom



Layer 3 24-port SFP+4-port
10G Stack Switch
XGS3-24242



16-Slot Managed Media
Converter Chassis with
Redundant Power Supply
System
MC-1610MR



Layer 3 24-Port 10G SFP+ + 4-Port
100G QSFP28 Managed Switch
XGS-6350-24X4C



Dual Band 802.11ax 3000Mbps
Ceiling-mount Wireless AP
WDAP-C3000AX

Library / Student Center



High Definition Color PoE
Gigabit IP Phone
VIP-1260PT



48-port+6-port 10G Stack
Switch
SGS-6310-48T6X



24-port PoE+4-port 10G
Stack Switch
SGS-6310-24P4X

Outdoor Facility



Dual Band 802.11ax 3000Mbps
Outdoor Wireless AP
WDAP-3000AX



H.265 5 Mega-pixel Smart IR
Bullet IP Camera with Remote
Focus and Zoom
ICA-M3580P



5GHz 802.11ac 900Mbps
Outdoor Wireless CPE
WBS-512AC



Renewable Energy
PoE Switch
BSP-360



Gym



Dual Band 802.11ax
3000Mbps Ceiling-mount
Wireless AP
WDAP-C3000AX



Dual Band 802.11ax
3000Mbps Outdoor
Wireless AP
WDAP-3000AX



24-port 1000X + 4-port
10G Managed Switch with
DC Redundant Power
GS-6311-16S8C4XR

Administration Office Building



L3 24-Port 802.3bt PoE +
4-Port 10G LCD Switch
GS-5220-24UPL4XV



720p SIP Multi-unit Apartment
Vandalproof Door Phone with
RFID and PoE
HDP-5260PT



High Definition Touch Color
Screen Smart Media Android
SIP Conference Phone
ICF-1900



Enterprise-class Universal
Network Management
Controller
NMS-500



Dual Band 802.11ax
3000Mbps Ceiling-mount
Wireless AP
WDAP-C3000AX

Smart Buildings for Enterprises & More

Facilitating smart networking system with PLANET enterprise application

To make a network of smart buildings a reality, PLANET enterprise applications provide closely controlled security within your networking system, and at the same time, they make the digital network design efficient and cost-effective. PLANET provides data centers of office buildings, banks, etc. with specially-designed color touch LCD Ethernet switches, large-scale wireless LAN controllers, network video recorders and security gateways. By utilizing our latest Network Management System (UNI-NMS,) demands for fast and safe digital transmission through the IP deployments including VoIP system, IP surveillance and wireless LAN can be centrally managed and easily controlled to ensure optimal capability and performance.

Network Management

Enterprise-class Universal Network Management Controller **NMS-500**

- Auto discovery of up to 512 devices via web interface
- Central provisioning and remotely controls over each managed device
- A topology view of network devices by LLDP protocol
- SMTP alarm and syslog for managed devices in real-time status
- Smart AP Controller up to 512 APs
- Easy deployment with map positioning
- Dashboard and chart design for all information in one



Surveillance

H.265+ 4MP Full Color Bullet/Dome IP Camera **ICA-3480F/ICA-4480F**

- Full color bullet type with 1/3" progressive scan CMOS sensor
- H.265+/H.265/H.264+/H.264 compression
- Built-in warm white light with maximum illumination distance of 25 m
- Supports 5 backlight compensation (BLC) modes: Left, Right, Up, Down, Middle
- Supports digital WDR (DWDR)
- IP67-rated metal housing with cable management



Wireless

Dual Band 802.11ax 3000Mbps Ceiling-mount Wireless AP **WDAP-C3000AX**

- Supports MU-MIMO, OFDMA and seamless roaming, beam forming, BSS coloring
- 802.11ax 2T2R architecture with data rate of up to 3000Mbps
- Backward compatible with IEEE 802.11 a/b/g/n/ac/ax
- Supports captive portal and RADIUS Server/Client
- Centrally managed by PLANET NMS controller and PLANET CloudViewerPro app



Dual Band 802.11ax 1800Mbps In-wall Wireless Access Point **WDAP-W1800AXU**

- Supports MU-MIMO, OFDMA, seamless roaming, beamforming and BSS coloring
- Simultaneous dual-band connectivity at 2.4GHz 600Mbps and 5GHz 1200Mbps
- Supports IPv6 and port VLAN
- Supports captive portal and RADIUS Server/Client
- USB Type C, 5V DC, 0.5A output
- Centrally managed by PLANET NMS controller and PLANET CloudViewerPro app



Voice Communication

High Definition Color PoE Gigabit IP Phone **VIP-1260PT**

- IETE SIP compliant with Transport Layer Security
- Wideband G.722 HD and Opus audio
- 2.8-inch color LCD with Multi-language display
- Dual Gigabit and IEEE 802.3af/at PoE compliant



Internet Telephony PBX System **IPX-2200**

- 80 concurrent calls and up to 200 registers
- HD voice codec G.722 for perfect voice quality
- Built-in SIP Proxy Server following RFC 3261
- Maximum 8 ports FXO/FXS/GSM (on 2 slots)



High Definition Touch Color Screen Smart Media Android SIP Conference Phone **ICF-1900**

- 7-inch color touch screen with Android 9.0 OS
- Plug and Play optional 1080p USB camera with 720P 30fps H.264 video call
- IETE SIP compliant with Transport Layer Security
- Up to 20 SIP lines with 112 one-touch DSS keys
- Dual Gigabit and IEEE 802.3af/at PoE compliant
- Built-in Bluetooth 4.2 and 2.4G/5G Wi-Fi
- Wideband G.722 HD and Opus audio codec with handset and hands-free function



Network Infrastructure

6-slot Layer 3 IPv6/IPv4 Routing Chassis Switch **CS-6306R**

- 192-port 10/100/1000BASE-T copper
- 192 1000BASE-SX/LX SFP fiber slots
- 64 10G XFP fiber slots
- 16 40G QSFP+ fiber slots
- 19-inch, 9U rack-mount



24-port PoE++ +4-port 10G LCD Switch **GS-6320-24UP2T2XV**

- 10/100/1000BASE-T with 802.3bt PoE++ port x 24
- R model supports 100~240V AC/48~60V DC redundant power
- 1G/10G SFP+ port x 2
- 10G BASE-T RJ45 port x 2
- 600-watt PoE budget
- Up to 95 watts per PoE port



VPN Security Gateway **VR-300FW-NR**

- Dual-WAN failover and Dual-WAN load balancing
- SSL VPN and robust hybrid VPN (IPSec/SSL/L2TP over IPSec)
- Stateful Packet Inspection (SPI) firewall and content filtering
- Blocking DoS/DDOS attack, port range forwarding,
- PLANET DDNS, IPv6, SNMP, Wireless AP management
- Compliant with IEEE 802.11a/b/g/n/ac wireless technology
- IP30 metal case, DIN-rail and wall-mount designs
- PLANET Universal Network Management System



Work Space



Dual Band 802.11ax
3000Mbps Outdoor
Wireless AP
WDAP-C3000AX



Dual Band 802.11ax 1800Mbps
In-wall Wireless Access Point
WDAP-W1800AXU



High Definition Color
PoE Gigabit IP Phone
VIP-1260PT



Enterprise-class Universal
Network Management
Controller
NMS-500

Entrance



H.265+ 4MP Smart IR
Bullet IP Camera
ICA-3480F



H.265+ 4MP Full Color
Dome IP Camera
ICA-4480F

Meeting Room



High Definition Touch Color
Screen Smart Media Android
SIP Conference Phone
ICF-1900

Control Center



Enterprise-class Universal
Network Management
Controller
NMS-500

Data Center



6-slot Layer 3 IPv6/IPv4
Routing Chassis Switch
CS-6306R



Internet Telephony PBX
System
IPX-2200



Enterprise-class Universal
Network Management
Controller
NMS-500



24-port PoE++ +4-port
10G LCD Switch
GS-6320-24UP2T2XV



VPN Security Gateway
VR-300FW-NR

Factory Automation

Designed for reliable, secure and smart industrial network Infrastructures

PLANET factory automation application is one of its many Industrial Ethernet Solutions that provide highly-reliable and smart solutions to ensure continuous and efficient operation for the IIoT environment. The Industrial Ethernet upgrades traditional, proprietary factory floor networks to a low-cost, high-performance, and scalable architecture. PLANET provides a complete product portfolio that is compliant with major IE protocols such as Modbus TCP, EtherCAT, and EN50155 for information level, control level, and device level in the Industrial Ethernet network.

Network Infrastructure

Flat-type 4-port PoE LCD Router

WGR-500-4PV

- 2.4-inch color LCD touch screen with management functions
- 4-port 10/100/1000BASE-T with 802.3at PoE+
- 802.1Q VLAN and IGMP proxy
- PoE management
- IPv6 Support for IoT Networking
- Secure Firewall Protection



Industrial 4-Port RS232/RS422/RS485 Serial Device Server

ICS-2400T

- 4 RS232/422/485 port to 10/100BASE-TX
- IP30 metal case protection
- -40 to 75 degrees C operating temperature
- TCP Server/Client, UDP Client, Virtual COM, Telnet Server, Pair Connection Remote/Local Modes
- 12 to 48V DC, redundant power with polarity reverse protect function



Industrial 5GHz 802.11ax 2400Mbps Wireless Access Point

IAP-2400AX

- 5GHz-band, 4T4R connectivity at 2400Mbps
- Supports MU-MIMO, OFDMA and seamless roaming, beamforming and BSS coloring
- Backward compatible with IEEE 802.11a/n/ac wireless technology
- Multiple operation modes: AP, repeater and gateway mode options
- Centrally managed by PLANET NMS controller and PLANET CloudViewerPro app
- Effective fault alarm and DI/DO alert for better protection



Industrial L3 4-Port 2.5GBASE-T 802.3bt PoE + 2-Port 10G SFP+ Managed Ethernet Switch

IGS-6325-4UP2X

- All 24 ports are compliant with IEEE802.3bt, delivering 95W per port with a total of 1440W.
- OSPFv2/v3, RIPv2 dynamic routing and IPv4/IPv6 static routing
- 10GBASE-SR/LR SFP+ slots, compatible with 1G/2.5G SFP
- Supports ITU-G.8032 Ethernet Ring Protection Switch (ERPS)
- Modbus TCP protocol for device management and monitoring
- ONVIF support allows easy integration with video IP surveillance systems



Industrial 1-port RS232/422/485 Modbus Gateway

IMG-2100T

- 1-port 10/100BASE-TX
- 1 RS232 with DB9 interface
- 1 RS422 or RS485 with terminal block interface
- RTU Master, RTU Slave, ASCII Master, and ASCII Slave operation modes
- Built-in IP-based Web interface and telnet interface for remote management
- 9 to 48V DC / 24V AC, redundant power
- -40 to 75 degrees C operating temperature
- IP30 metal case



Industrial 16-port PoE Switch

IGS-20160HPT

- 16-port 10/100/1000T with PoE+ plus 2-port 10/100/1000T + 2-port 1G/2.5G SFP
- IPv6/IPv4 Web, Telnet and SNMP management
- 802.1Q VLAN, MSTP and IGMP snooping
- ERPS ring supported
- Static route supported
- -40 to 75 degrees C wide operating temperature
- DI and DO supported



16-ch EtherCAT Slave I/O Module

IECS-1116-DI/IECS-1116-DO

- Built-in isolated 16 digital inputs
- 2 x RJ45 bus interface
- LED indicators for the input status
- Removable terminal block connector
- Distance between stations up to 100m (100BASE-TX)
- EtherCAT conformance test tool verified



Industrial EtherCAT Media Converter Kit

IECC-210-KIT

- Built-in isolated 16 digital outputs
- 2 x RJ45 bus interface
- LED indicators for the input status
- Removable terminal block connector
- Distance between stations up to 100m (100BASE-TX)
- EtherCAT conformance test tool verified



Universal Network Management Controller with LCD Touch Screen (10"/12")

NMS-1000V-10/12

- Stylish TFT-LCD touch screen display and aluminum die-cast front bezel and chassis
- Auto discovery of up to 1024 devices via web interface
- Central provisioning and remotely control over each managed device
- A topology view of network devices by LLDP protocol
- All-new dashboard for monitoring traffic and PoE usage
- Setup Wizard, alert popup message and e-mail alarm notification



Network Management

Surveillance

H.265+ 16-ch 4K Network Video Recorder

NVR-1600

- Scheduled recording of 16 IP cameras simultaneously
- Supports H.265/H.264/H.265+/H.264+ compression
- Supports operation simultaneously for Preview, Recording, Playback, Live and Backup
- Multiple event detections like motion detection, video loss and PLANET AI IP camera event management



H.265 5 Mega-pixel Smart IR Bullet IP Camera with Remote Focus and Zoom

ICA-M3580P

- 1/2.8" 5 Megapixel progressive scan STARVIS™ CMOS
- 2.7-13.5mm 5X motorized zoom auto focus lens
- H.265(+)/H.264(+)/JPEG/AVI/MJPEG triple-stream encoding
- WDR, 3DNR, ICR, PLANET DDNS & Easy DDNS
- PoE & ONVIF compliant for interoperability
- Built-in smart IR illuminators, effective up to 40 meters
- IP67-rated housing with cable management bracket



H.265 5 Mega-pixel Smart IR Dome IP Camera

ICA-M4580P

- 1/2.8" 5 Megapixel progressive scan STARVIS™ CMOS
- 2.7-13.5mm 5X motorized zoom auto focus lens
- H.265(+)/H.264(+)/JPEG/AVI/MJPEG triple-stream encoding
- WDR, 3DNR, ICR, PLANET DDNS & Easy DDNS
- PoE & ONVIF compliant for interoperability
- Built-in smart IR illuminators, effective up to 30 meters
- IP67-rated housing for rigorous environment



M2M Station



Industrial 5GHz 802.11ax
2400Mbps Wireless Access Point
IAP-2400AX



H.265 5 Mega-pixel Smart
IR Dome IP Camera
ICA-M4580P



Industrial L3 4-Port 2.5GBASE-T
802.3bt PoE + 2-Port 10G SFP+
Managed Ethernet Switch
IGS-6325-4UP2X



Industrial 4-Port Serial
Device Server
ICS-2400T



Industrial 1-port
RS232/422/485
Modbus Gateway
IMG-2100T



Flat-type 4-port PoE
LCD Router
WGR-500-4PV



Universal Network Management
Controller with LCD Touch
Screen (10"/12")
NMS-1000V-10/12

Storage/Warehouse



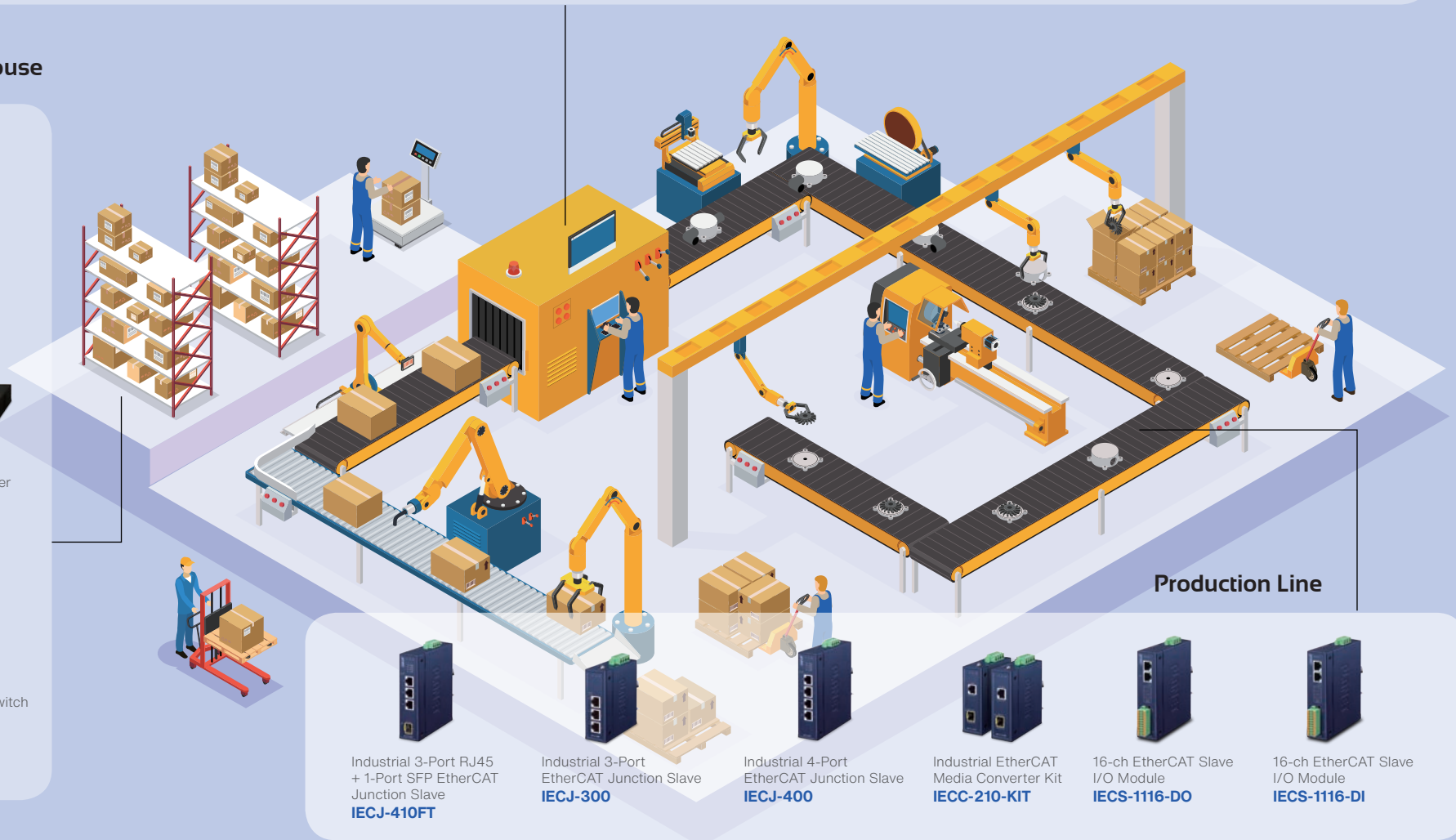
5 Mega-pixel Smart IR
Bullet IP Camera
ICA-M3580P



H.265+ 16-ch 4K
Network Video Recorder
NVR-1600



Industrial 16-port PoE Switch
IGS-20160HPT



Production Line



Industrial 3-Port RJ45
+ 1-Port SFP EtherCAT
Junction Slave
IECJ-410FT



Industrial 3-Port
EtherCAT Junction Slave
IECJ-300



Industrial 4-Port
EtherCAT Junction Slave
IECJ-400



Industrial EtherCAT
Media Converter Kit
IECC-210-KIT



16-ch EtherCAT Slave
I/O Module
IECS-1116-DO



16-ch EtherCAT Slave
I/O Module
IECS-1116-DI

Intelligent Transportation System

Innovative transportation network with comprehensive IP solutions

PLANET covers a wide range of Intelligent Transportation System (ITS) applications for the railway, metro system and highway networking deployments. As all of these ITS network interfaces require long distance, high-bandwidth and real-time data transmission, PLANET's comprehensive product line provides robust, reliable and secure solutions to ensure uninterrupted high-quality transmission. Featuring ITU-T under G.8032 Recommendation, it provides sub-50ms protection and recovery switching for Ethernet traffic in a ring topology and at the same time ensures that there are no loops formed at the Ethernet layer.

Metro System

Surveillance

H.265 5 Mega-pixel Smart IR Dome IP Camera **ICA-M4580P**

- 1/2.8" 5 Megapixel progressive scan STARVIS™ CMOS
- 2.7-13.5mm 5X motorized zoom auto focus lens
- H.265(+)/H.264(+)/JPEG/AVI/MJPEG triple-stream encoding
- WDR, 3DNR, ICR, PLANET DDNS & Easy DDNS
- PoE & ONVIF compliant for interoperability
- Built-in smart IR illuminators, effective up to 30 meters
- IP67-rated housing for rigorous environment



Wireless

EN50155 4G LTE/GPS/Wi-Fi Gateway **VCG-1500WG-LTE**

- One SIM slot and one 4G LTE antenna for network connection
- 4 10/100TX LAN ports and 1 10/100TX WAN port
- Supports Wi-Fi 802.11 b/g/n for mobile client connectivity
- GPS antenna allows to detect the location via sat nav system
- Supports NAT, DMZ, MAC/Application/IP filter and static routing
- Supports CMS and SNMP for remote management



Network Management

Enterprise-class Universal Network Management Controller **NMS-500**

- Auto discovery of up to 512 devices via web interface
- Central provisioning and remotely control over each managed device
- A topology view of network devices by LLDP protocol
- The status of a network can be reported via system event and syslog
- SMTP alarm for managed devices in real-time status
- Built-in PLANET AP controller (SAPC) and RADIUS authentication function



Network Infrastructure

Industrial IP67-rated 4-Port 10/100/1000T 802.3at PoE+ 2-Port 10/100/1000T Managed Ethernet Switch **IGS-5227X-4P2T**

- IP67 aluminum case and M12 Ethernet connectors
- -40 to 75 degrees C wide operating temperature
- 12~48V DC redundant power and 144-watt PoE budget
- PoE schedule, scheduled Power recycling and PD alive check functions
- ERPS Ring Data Recovery time < 50ms
- IPv4/IPv6 Layer 3 static routing and route summarization



Industrial 2-Port RS232/RS422/RS485 Serial Device Server **ICS-2200T**

- 2 RS232/422/485 ports to 10/100 BASE-TX
- TCP Server/Client, UDP Client, Virtual COM, Telnet Server, Pair Connection-remote/ local modes
- 12~48VDC, redundant power with polarity reverse protection function
- -40 to 75 degrees C operating temperature
- IP 30 metal case



2-port RS232/422/485 Modbus Gateway **MG-120**

- Supports Modbus TCP/RTU/ASCII Slave and Master operation modes
- Master mode supports 32 TCP slave connection requests
- Slave mode supports 32 TCP master connections
- Supports Web and telnet management
- Compact size and wall-mounted design without space limitation



Industrial L3 8-Port 10/100/1000T 802.3bt PoE + 2-Port 1G/2.5G SFP + 2-Port 10G SFP+ Managed Ethernet Switch **IGS-6329-8UP2S2X**

- EN 61000-6-2/6-4 EMC standards for heavy industrial environments
- 360-watt PoE budget, intelligent PoE management
- 90W 802.3bt PoE++, 95W PoH/60W force mode or 36W PoE+ operation mode can be selected
- Layer 3 OSPFv2/v3 dynamic routing, IPv4/IPv6 static IP routes
- ITU-T G.8032 ERPS
- Cybersecurity can be enhanced with SNMPv3, SSHv2 and TLSv1.2 features



Highway

Wireless

Industrial 5G NR Compact Cellular Wireless Gateway **ICG-2210W-NR**

- 5G NR(NSA/SA)/4G LTE network with dual micro-SIM design for cellular network redundancy
- Multi VPN with IPSec, OpenVPN, PPTP, L2TP, GRE
- Full security with Cybersecurity, VLAN, NAT, DMZ, and IP/MAC/Port filtering
- Stateful Packet Inspection (SPI) firewall and content filtering
- IP30 Metal and compact design
- -40 to 75 degrees C operating temperature



Surveillance

H.265 5 Mega-pixel Smart IR Bullet IP Camera with Remote Focus and Zoom **ICA-M3580P**

- 1/2.8" 5 Megapixel progressive scan STARVIS™ CMOS
- 2.7-13.5mm 5X motorized zoom auto focus lens
- H.265(+)/H.264(+)/JPEG/AVI/MJPEG triple-stream encoding
- WDR, 3DNR, ICR, PLANET DDNS & Easy DDNS
- PoE & ONVIF compliant for interoperability
- Built-in smart IR illuminators, effective up to 40 meters
- IP67-rated housing with cable management bracket



Network Infrastructure

1-Port Long Reach PoE over coax Extender Kit (LRP-101CH + LRP-101CE) **LRP-101C-KIT**

- Power and Ethernet data transmission of 1,000m over coaxial cabling
- Complies with IEEE 802.3af / IEEE 802.3at Power over Ethernet PD on RJ45 port
- Auto detects remote powered device (PD)
- Compact size, DIN-rail and wall-mount design
- Plug and Play; no PC required
- -20 to 70 degrees C operating temperature



8-port LRP Managed Switch **LRP-822CS**

- 8 100Mbps BNC female ports with LRP Inject function
- 2 10/100/1000 BASE-T Gigabit RJ45 copper ports
- 2 100/1000 BASE-X mini-GBIC/SFP slots
- Supports PoE power up to 36W for each PoE port
- 802.1Q VLAN, MSTP and 1GMP Snooping
- IPv6/IPv4 ACL, QoS supported



Industrial Flat-type PoE Switch **WGS-5225-8UP2SV**

- Maximum 720-watt PoE budget, intelligent PoE management
- Per port configurable 90W 802.3bt PoE++/95W PoH/60W Force mode/36W PoE+ operating modes
- 2.4-inch color LCD touch screen with management and diagnostic functions
- ITU-T G.8032 Ethernet Ring Protection Switching (ERPS) data recovery time <10ms
- Intelligent PD alive check, PoE schedule, scheduled power recycling
- Fanless cooling system, high efficiency thermal design



Platform/On the Train



H.265 5 Mega-pixel Smart
IR Dome IP Camera
ICA-M4580P



4-port PoE + 2-port TP
Switch
IGS-5227X-4P2T



EN50155 4G LTE/GPS/
Wi-Fi Gateway
VCG-1500WG-LTE



Highway



5 Mega-pixel Smart IR
Bullet IP Camera
ICA-M3580P



Long Reach PoE over coax
Extender
LRP-101C-KIT



Ticket Booth



Industrial 2-Port RS232/
RS422/RS485 Serial
Device Server
ICS-2200T

Gate



2-port RS232/422/485
Modbus Gateway
MG-120



Control Center



Industrial 8-Port PoE Switch
IGS-6329-8UP2S2X



Universal Network
Management Controller
NMS-500

Bus



Industrial 5G NR Compact
Cellular Wireless Gateway
ICG-2210W-NR

Electric Box



8-port LRP Managed Switch
LRP-822CS

Control Center



Industrial Flat-type
8-Port PoE bt Switch
WGS-5225-8UP2SV



Smart Environments

AIoT, LoRa and LoRaWAN Applications for Long-range Network Deployments

PLANET AIoT, LoRa and LoRaWAN products are designed for smart environments as they feature long-range transmission capability with less power consumption. PLANET LoRa gateways act as a smart hub between end devices (nodes) and application servers. LoRa facilities can help solve some of the biggest challenges facing our planet like energy management, infrastructure efficiency, and more.

Thus, they are definitely a must for smart agriculture, buildings, cities, homes, industries, enterprises, and more.

Control Center



Renewable Energy Management Controller with LCD Touch Screen (10"/12")
NMS-360V-10/12



Renewable Energy Management Controller
NMS-360

Smart Facilities



Dual Band 802.11ax 3000Mbps Outdoor Wireless AP
WDAF-3000AX



H.265+ 4MP Smart IR Bullet IP Camera
ICA-3480



Industrial IP30 LoRa Node Controller
LN1130



LoRaWAN Temperature & Humidity Sensor
LS200-TH



Remote Networking



Industrial L3 8-Port 802.3at PoE + 2-Port 1G/2.5G SFP + 2-Port 10G SFP+ Ethernet Switch
IGS-5225-8P2S2X



Renewable Energy PoE Switch
BSP-360



Industrial 5G NR Outdoor Unit
FWA-2100-NR



Industrial LoRaWAN Gateway with 5-Port 10/100/1000T
LCG-300

Intelligent Factory



Industrial 5G NR Cellular Wireless Gateway
ICG-2515FW-NR



Industrial LoRaWAN Wireless Gateway with 5-Port 10/100/1000T
LCG-300W



Indoor IP30 LoRa Node Controller
LN1130/LN1140



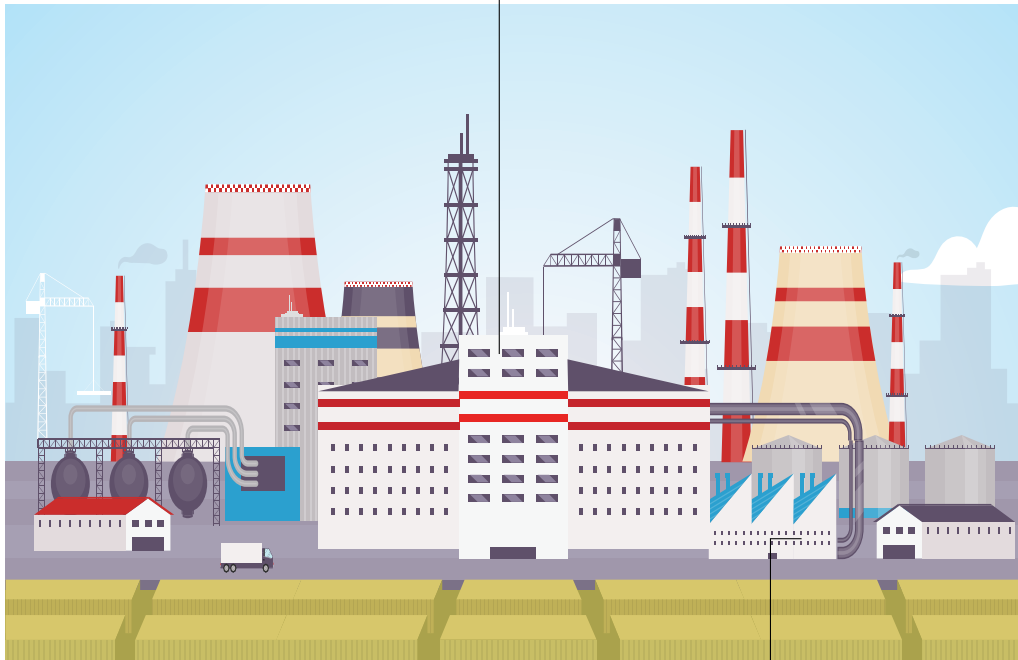
Wi-Fi 6 VPN Security Gateway / Router
IVR-300W/VR-300PW6A



Dual Band 802.11ax 3000Mbps Outdoor Wireless AP
WDAP-C3000AX



Industrial 5GHz 802.11ax 2400Mbps Wireless Access Point with 5 10/100/1000T LAN Ports
IAP-2400AX



Control Center



Universal Network Management Central Controller
UNC-NMS



Universal Network Management Controller with LCD Touch Screen
NMS-1000V-10/12

Data Center

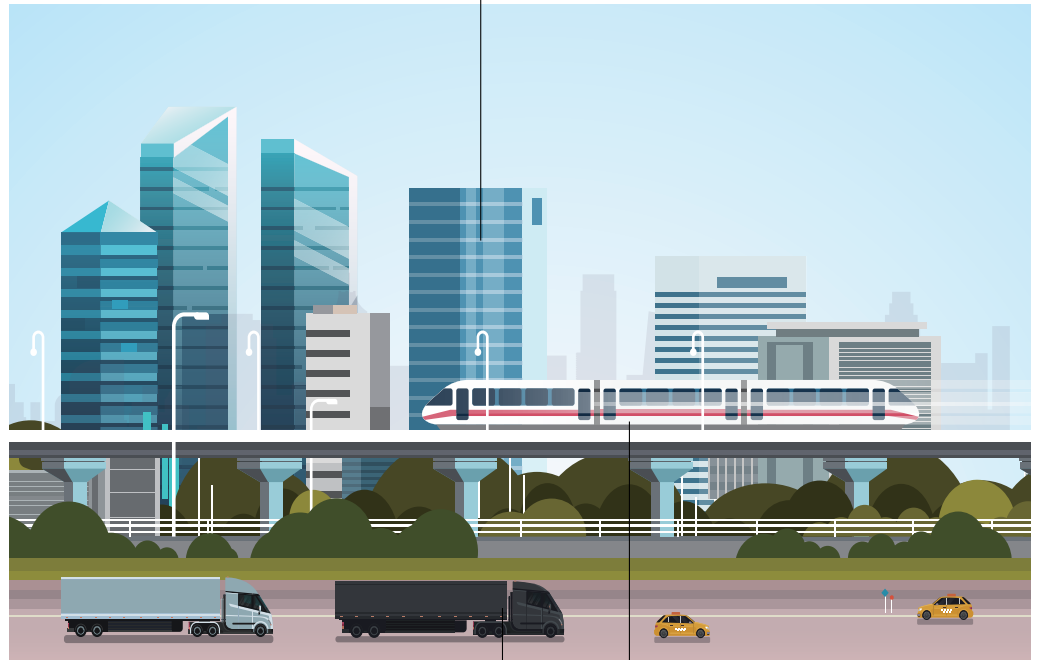


Industrial L3 24-Port 10/100/1000T 802.3at PoE + 4-Port 10G SFP+ Managed Ethernet Switch
IGS-6325-24P4X



Industrial Single-Port Multi-Gigabit 802.3bt PoE++ Injector
IPOE-171-95W

Indoor Work Space



Vehicle



EN50155 4G LTE/GPS/Wi-Fi Gateway
VCG-1500WG-LTE

Railway



Industrial IP67-rated 4-Port 10/100/1000T 802.3at PoE+ 2-Port 10/100/1000T Managed Ethernet Switch
IGS-5227X-4P2T

Industrial L3 8-Port 10/100/1000T 802.3at PoE + 2-Port 1G/2.5G SFP + 2-Port 10G SFP+ Managed Ethernet Switch **IGS-5225-8P2S2X**

- 8-port 10/100/1000BASE-T with 802.3at PoE+
- 240-watt PoE budget/remote PoE power control
- -40 ~ 75 degrees C wide operating temperature
- 48 ~ 56V DC redundant power design
- IEEE 802.1w/1s STP, IEEE 802.1Q VLAN and IGMP snooping v2 and v3
- ERPS ring supported
- L3 static route and OSPFv2 supported
- DI and DO supported



Industrial IP67-rated 4-Port 10/100/1000T 802.3at PoE+ 2-Port 10/100/1000T Managed Ethernet Switch **IGS-5227X-4P2T**

- IP67 aluminum case, outdoor installation
- Waterproof and dustproof M12 Ethernet connector against vibration and shock
- -40 to 75 degrees C wide operating temperature
- 12~48V DC redundant power design
- 144-watt PoE budget/remote PoE power control
- PoE schedule, scheduled power recycling and PD alive check functions
- ERPS Ring Data Recovery time < 50ms
- IPv4/IPv6 Layer 3 static routing and route summarization



Industrial L3 24-Port 10/100/1000T 802.3at PoE + 4-Port 10G SFP+ Managed Ethernet Switch **IGS-6325-24P4X**

- Hardware-based IPv4/IPv6 Layer 3 static routing and OSPFv2
- Supports ITU-G.8032 Ethernet Ring Protection Switching (ERPS)
- Supports PoE Power up to 36 watts for each PoE port
- PoE schedule, scheduled power recycling, PD alive check
- IPv6 Web interface; SNMP v1, v2c and v3; SSH/SSL management
- Redundant power design: Dual 48~56V
- IP30 metal case; rack-mount design
- -40 to 75 degrees C operating temperature



Industrial Renewable Power 5-Port Gigabit Managed Switch/Router with 4-Port 802.3at PoE+ **BSP-360**

- 4-port 10/100/1000BASE-T with 802.3at PoE+
- 1-port 10/100/1000BASE-T WAN
- 1 24V DC power output up to 48W
- -10~60 degrees C operating temperature
- MPPT Charge Controller with support up to 400W green power
- Managed by NMS-360 controller
- USB backup



Renewable Energy Management Controller with LCD Touch Screen (10"/12") **NMS-360V-10/12**

- Auto discovery of up to 512 BSP-360 switches and up to 1024 PoE IP cameras
- Central provisioning and remotely control over each managed device
- Dashboard for Green Power, PoE Usage, Traffic and Device Event
- Setup Wizard, and e-mail alarm notification
- Map viewing and IP cam snapshots
- Backup and restoration via USB 3.0
- Stylish 10"/12" TFT-LCD touch screen display (NMS-360V)



Renewable Energy Management Controller **NMS-360**

- Auto discovery of up to 512 BSP-360 switches and up to 1024 PoE IP cameras
- Central provisioning and remotely control over each managed device
- Dashboard for Green Power, PoE Usage, Traffic and Device Event
- Setup Wizard, and e-mail alarm notification
- Map viewing and IP cam snapshots
- Backup and restoration via USB 3.0



Outdoor IP67 LoRa Node Controller **LN501**

- Converts serial and I/O data to LoRa environment
- Supports RS232, RS485, DI and DO interfaces
- Compliant with LoRaWAN® 1.0/1.0.2 class C
- Supports EU868, AU915, US915 and AS923



LoRaWAN Temperature & Humidity Sensor **LS200-TH**

- Ultra low power consumption
- Long transmission distance up to 10km with line of sight
- IP65 waterproof design
- Compliant with LoRaWAN gateway



Industrial LoRaWAN Gateway **LCG-300**

- 8 programmable parallel demodulation paths
- Supports Frequency Band EU868/US915/AS923 MHz Sub 1G
- Web UI for LoRa and network configuration
- SSL VPN and robust hybrid VPN (IPSec/PPTP/L2TP over IPSec)
- DC 9 to 54V redundant power; -40 to 75 degrees C operating temperature
- IP30 metal case with DIN-rail or wall-mount design



Industrial LoRaWAN Wireless Gateway **LCG-300W**

- 8 programmable parallel demodulation paths
- Supports Frequency Band EU868/US915/AS923 MHz Sub 1G
- Web UI for LoRa and network configuration
- SSL VPN and robust hybrid VPN (IPSec/PPTP/L2TP over IPSec)
- DC 9 to 54V redundant power; -40 to 75 degrees C operating temperature
- IP30 metal case with DIN-rail or wall-mount design



Indoor IP30 LoRa Node Controller **LN1130/LN1140**

- Ultra-wide-distance transmission up to 10km with line of sight
- Easy to connect with multiple wired sensors through RS232/RS485 interfaces (LN1130)
- 2 DI/DO interfaces for operating application (LN1140)
- Triggers multiple conditions and actions
- Compliant with standard LoRaWAN gateways and network servers
- 9 to 48V DC power with reverse polarity protection (AC 24V power adapter acceptable)
- Industrial metal case IP30 design with -40°C~75 temperature range



Industrial 5GHz 802.11ax 2400Mbps Wireless Access Point with 5 10/100/1000T LAN Ports **IAP-2400AX**

- Supports MU-MIMO, OFDMA, seamless roaming, beamforming and BSS coloring
- Single connectivity in 5GHz band (2400Mbps)
- Supports captive portal and RADIUS server
- Centrally managed by PLANET NMS controller and PLANET CloudViewerPro app
- 2 x digital input, 2 x digital output
- 9-54V DC redundant power with reverse polarity protection



Industrial 5-Port 10/100/1000T VPN Security Gateway with Redundant Power **IVR-300W**

- Dual-WAN failover and load balancing
- Static Packet Inspection (SPI) firewall and blocks DoS/DDoS attack
- Full security with Cybersecurity, VLAN, NAT, DMZ, Static/Dynamic routing, and IP/MAC/Port filtering
- Multiple VPN with IPSEC, OpenVPN, PPTP, L2TP, GRE and VPN Failover
- PLANET UNI-NMS, Easy DDNS and Wireless AP Management
- Wi-Fi compliant IEEE 802.11b/g/n/ax dual-band for mobile client connectivity (IVR-300W)
- Compliant with IEEE 802.3af/at PoE interface and PoE management (IVR-300P)
- -40 to 75 degrees C operating temperature and fanless design



Industrial 5G NR Cellular Wireless Gateway with 1-Port 1000X SFP **ICG-2515FW-NR**

- Global 5G NR (NSA/SA)/4G LTE network with dual SIM design for cellular network redundancy
- One 1000BASE-X SFP slot for LAN/WAN interface
- 2 x DI/DO and 1 serial port (RS485) for Modbus applications
- SSL VPN and robust hybrid VPN (IPSec/PPTP/L2TP over IPSec)
- -40 to 75 degrees C operating temperature; DIN-rail and fanless designs



Wi-Fi 6 AX2400 2.4GHz/5GHz VPN Security Router with 4-Port 802.3at PoE+ **VR-300PW6A**

- Selectable dual-band connectivity in 2.4GHz (600Mbps) or 5GHz (2400Mbps)
- Dual-WAN failover and Dual-WAN load balancing
- SSL VPN and robust hybrid VPN (IPSec/PPTP/L2TP over IPSec)
- High Availability, AP Controller, Captive Portal and RADIUS
- Compliant with the IEEE 802.3at PoE+ with PD alive check/schedule management
- PLANET Universal Network Management System and CloudViewerPro app supported



Dual Band 802.11ax 3000Mbps Ceiling-mount Wireless AP **WDAP-C3000AX**

- Supports Wi-Fi mesh wireless network with Wizard
- Supports MU-MIMO, OFDMA and seamless roaming
- Simultaneous dual-band connectivity in 2.4GHz (600Mbps) and 5GHz (2400Mbps)
- Gigabit Ethernet Port with 802.3at PoE+ PD compliant
- Supports multiple VLANs mapping to multiple SSIDs
- Centrally managed by PLANET NMS controller and CloudViewerPro app



Dual Band 802.11ax 3000Mbps Outdoor Wireless AP **WDAP-3000AX**

- Supports Wi-Fi mesh wireless network with Wizard
- Simultaneous dual-band connectivity in 2.4GHz (600Mbps) and 5GHz (2400Mbps)
- Supports MU-MIMO, OFDMA and seamless roaming
- 20KV surge protection for wired cable interface
- Supports IP67 rating, operating in temperature ranging from -40 to 70 degrees C
- Centrally managed by PLANET NMS controller and PLANET CloudViewerPro app



Industrial 5G NR Outdoor Unit **FWA-2100-NR**

- 5G NR(NSA/SA)/4G LTE network with dual nano-SIM design for cellular network redundancy
- SSL VPN and robust hybrid VPN (IPSec/PPTP/L2TP)
- Full security with Cybersecurity, DMZ, and IP/MAC/Port filtering
- Stateful Packet Inspection (SPI) firewall and content filtering
- -20 to 60 degrees C operating temperature
- IP68 rating waterproof



H.265+ 4MP Smart IR Bullet IP Camera **ICA-3480**

- Full color bullet type with 1/3" progressive scan CMOS sensor
- H.265+/H.265/H.264+/H.264 compression
- Built-in smart IR illuminators, effective up to 25m
- Supports 5 backlight compensation (BLC) modes: Left, Right, Up, Down, Middle
- Supports digital WDR (DWDR)
- IP67-rated metal housing with cable management



Universal Network Management Central Controller with LCD & 6 10/100/1000T LAN Ports (1024 x 100 nodes) **UNC-NMS**

- 6 x 10/100/1000BASE-T Gigabit Ethernet RJ45 ports
- Providing the at-a-glance view of center system, site summary, site Map, traffic, PoE network status
- Show Top 10 Event Report, History Comparison function, Critical Events for devices
- A topology of network devices compliant with MQTT, SNMP, ONVIF, Smart Discovery and LLTD Protocol with Map or not
- Email alerts for the administrator via the SMTP server



Universal Network Management Controller with LCD Touch Screen (10"/12") **NMS-1000V-10/12**

- Stylish TFT-LCD touch screen display and aluminum die-cast front bezel and chassis
- Auto discovery of up to 1024 devices via web interface
- Central provisioning and remotely control over each managed device
- A topology view of network devices by LLDP protocol
- All-new dashboard for monitoring traffic and PoE usage
- Setup Wizard, alert popup message and e-mail alarm notification





PLANET Technology Corporation

11F., No. 96, Minguang Rd., Xindian Dist., New Taipei City 231, Taiwan (R.O.C) Tel: 886-2-2219-9518 Fax: 886-2-2219-9528 E-mail: sales@planet.com.tw
PLANET reserves the right to change specifications without prior notice. All brand names and trademarks are property of their respective owners. © PLANET Technology Corporation DM-AP0124