

USB 2.0 GDI Print Server



Concerning there are more and more GDI printer released. PLANET is glad to introduce you our new print server - FPS-1011. It allows you to share traditional printer and GDI printer to your network. Not only provides network users greater flexibility, but also removes loads from the existing server. The product enhances printing performance as well as overall network performance. In addition, by using our Windows based configuration program, configuration can be completed in minutes. Equipped with the printer interface - USB2.0, the FPS-1011 provides the most compatibility to the newly released printer that built in USB 1.1 / 2.0 interface.

Due to GDI printer just supports Windows environment, so that FPS-1011 will just work with Win 98SE/Me/2000 SP4/XP SP1 when it be a GDI print server. Be a normal print server, FPS-1011 is also support traditional printers in the various common network operating systems including Windows 98SE/Me/NT/2000/XP/2003, UNIX, Linux and MAC OS 9.x above.

KEY FEATURE

Support for most popular NOS

- **Print Server Mode**

UNIX, Linux: TCP/IP, LPD

Windows: LPR, IPP, Standard TCP/IP printing (Win 2000/XP/2003)

Apple: TCP/IP (MAC OS 9 or above)

NetWare : TCP/IP (Novell 5.0 or above)

- **GDI Print Server Mode**

Win 98SE/Me/2000 SP4/XP SP1

Auto-Sensing

- Supports 10/100Mbps Auto-Nway, automatically negotiates optimal mode, 10/20Mbps, 100/200Mbps
- Ethernet 802.2, Ethernet 802.3, and SNAP Auto-Detect

Auto-MDI/MDI-X

- Auto detects the connected cable type while connecting to different LAN devices. It is capable of detecting the signal and changing its transferring / receiving order on the cable automatically.

Easy Management

- Intuitive management utility provided for Windows 95/98/2000/Me/NT/XP/Server 2003 or Web-Base Management

Internet Printing Protocol (IPP) Support

- The FPS-1011 acts as IPP (Internet Printing Protocol) Server, allowing your clients, suppliers, and colleagues to operate your printers from anywhere on the Internet. Windows IPP Client software is also supplied.

Support GDI Printer

- Supports GDI interface, FPS-1011 can work with GDI printer and share the printer to your network

SPECIFICATION

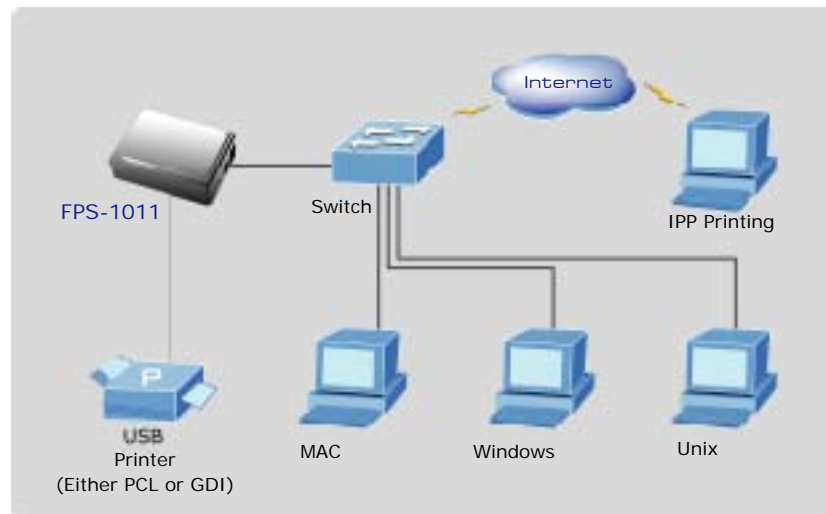
Product **USB 2.0 GDI Print Server**

Model	FPS-1011
Printer Connector	1 x USB 2.0 (Type A)
Ethernet Connector	1 x 10/100Base-TX
LEDs	3; LAN, ACT, READY
Protocol Support	TCP/IP, NetBEUI, AppleTalk, HTTP, IPP, DHCP, LPR
Power Input	7.5V DC, 500mA
Cabling Type	10Base-T UTP Cat 3 or better 100Base-TX UTP Cat5 or better
Network Speed	10/100Mbps, Half-Duplex mode 20/200Mbps, Full-Duplex mode
Dimension (L x W x H)	75 x 56 x 24 mm
Weight	45g
Environmental Specifications	Operating Temperature : 0~50 Degree C Storage Temperature: -10 ~ 60 Degree C Operating Humidity: 10~90% Storage Humidity: 0~95%
EMI	FCC, CE

APPLICATIONS

All the users that work with different OS, such as Windows, Linux, Mac OS and Novell operate the printers via the FPS-1011 at the same time.

Secondly, as soon as assigned with a legal IP address, not only local users, but also Internet users can easily connect to the attached printer through Internet with IPP printing function for satisfying the printing needs.



ORDERING INFORMATION

FPS-1011	USB2.0 GDI Print Server
----------	-------------------------