

UTM Content Security Gateway

CS-2001

Quick Installation Guide

Table of Contents

1. Package Contents	3
2. Setup the UTM Content Security Gateway	4
3. Hardware Installation	5
4. Basic System Configuration	7

1. Package Contents

CS-2001

- CS-2001 x 1
- Quick Installation Guide x 1
- User's Manual CD x 1
- Power cord x 1
- Console cable x 1
- Cat5 Cable x 4
- Screw Package x 1
- Rack-mount ear x 2
- Mat x 4

If any of above items are damaged or missing, please contact your dealer immediately.

2. Setup the UTM Content Security Gateway

The followings are instructions for setting up PLANET CS-2001. Refer to the illustration and follow the simple steps below to quickly install your UTM Content Security Gateway.

Safety Instruction

The following is the safety instructions for UTM Content Security Gateway before installing.

>> The maximum operating temperature of the UTM is 50°C. Care must be taken to allow sufficient air circulation or space between units when the UTM is installed inside a closed rack assembly and racks should safely support the combined weight of all UTM.

>> The connections and equipment that supply power to the UTM should be capable of operating safely with the maximum power requirements of the UTM. In the event of a power overload, the supply circuits and supply wiring should not become hazardous.

>> The AC power cord must plug into the right supply voltage. Make sure that the supplied AC voltage is correct and stable. If the input AC voltage is over 10% lower than the standard may cause the UTM to malfunction.

>> Generally, when installed after the final configuration, the product must comply with the applicable safety standards and regulatory requirements of the country in which it is installed. If necessary, consult for technical support.

3. Hardware Installation

Front panel:

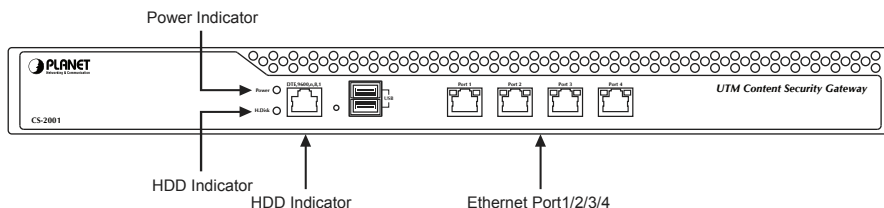


Figure 1. Front Panel of the CS-2001

- **Power Indicator:** Lights up when the power is on.
- **HDD Indicator:** Glitters when system is accessing data from the HDD.
- **Console Port (9600, 8, N, 1):** A RJ-45 console cable connect this serial port for checking network interface setting and can reset to factory setting.
- **Ethernet Port 1/2/3/4 can be set as a:**
 - LAN Port: Connects to the Intranet.
 - WAN Port: Connects to the perimeter router.
 - DMZ Port: The demilitarized zone (DMZ) is a physical subnet for securing the Local Area Network. It allows the externals users to access the company’s external network.

LED / Port	Description		
WAN LAN DMZ	LED1	Orange	Steady on indicates the port is connected to other network device. Blink to indicates there is traffic on the port
		Orange	Steady on indicates the port is connected at 1000Mbps speed
	LED2	Green	Steady on indicates the port is connected at 100Mbps speed
		Off	The LED off to indicate the port is connected at 10Mbps speed

CS-2001 Topology:

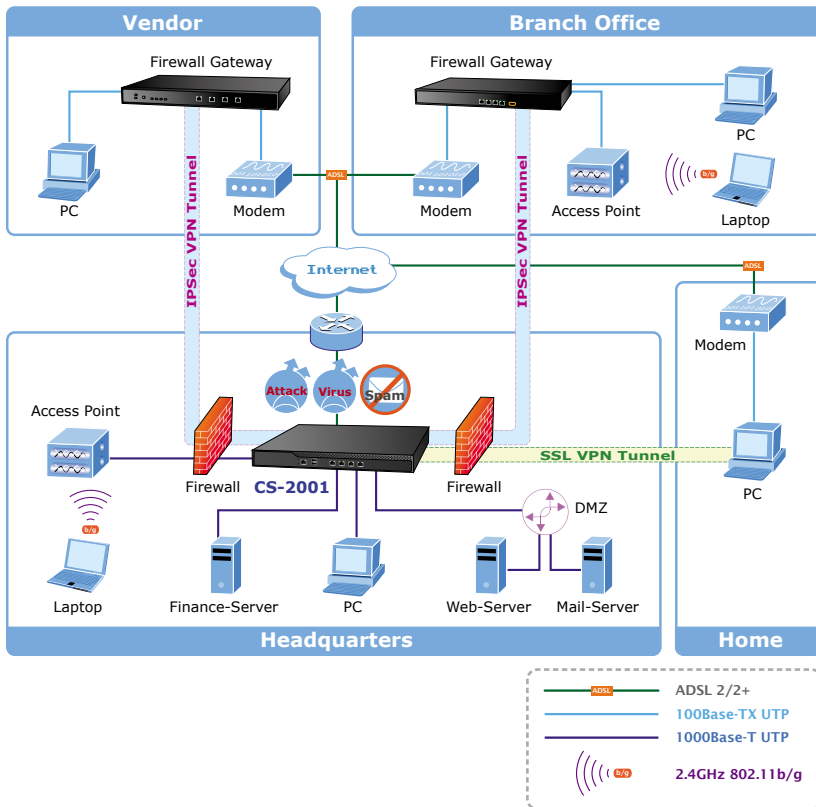
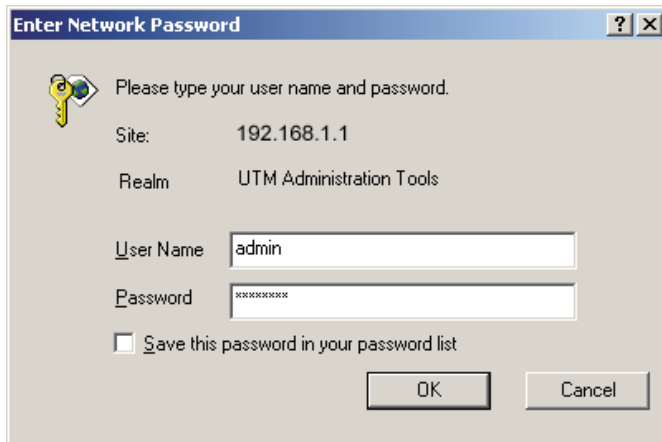


Figure 2. Topology of the CS-2001

4. Basic System Configuration

- Step 1.** Connect both the IT administrator's PC and the device's LAN port to the same hub / switch, and launch a browser (e.g., IE or Firefox) to access the management interface address which is set to <http://192.168.1.1> by default.
- Step 2.** You will be prompted for user name and password when accessing the management interface. (both of user name and password are "admin" by default)



Enter Network Password

Please type your user name and password.

Site: 192.168.1.1

Realm: UTM Administration Tools

User Name: admin

Password: xxxxxxxx

Save this password in your password list

OK Cancel

Figure 3. Typing the User Name and Password

Step 3. The user interface consists of the following two panels:

- **Menu Panel:** Presents all the available system configurations in a tree directory structure. (see Overview of Functions)
- **Configuration Panel:** Displays the data or configurable settings of the corresponding item selected on the Menu Panel.

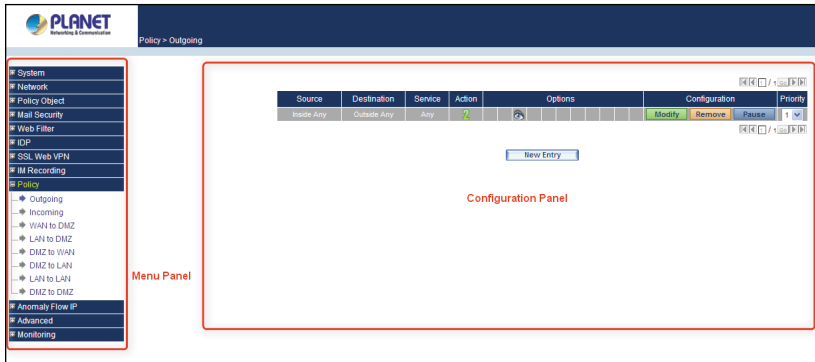


Figure 4. The CS-2001 User Interface



Note

For your reference, you may configure your management address based on the available subnet ranges below.

10.0.0.0 ~ 10.255.255.255

172.16.0.0 ~ 172.31.255.255

192.168.0.0 ~ 192.168.255.255

Step 4. If it's the first time you've logged into the management interface, an install wizard will appear to guide you through setting some of the basic settings required. System > Configuration > Installation Wizard



Figure5. The Install Wizard

Setp 5. Select the language for the user interface and the default character encoding.

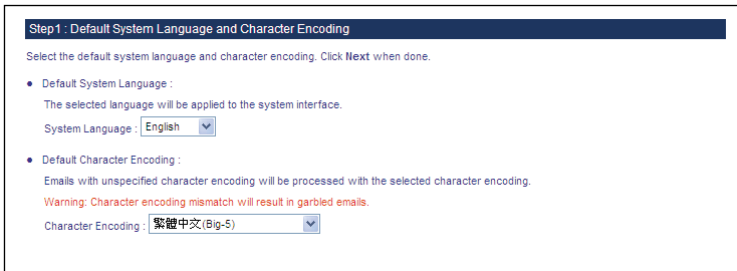


Figure6. Selecting the Language and Default Character Encoding

Important

Any data saved on the interface will be saved as the selected default character encoding if the device is unable to recognize the encoding.

Step 6. The LAN interface address must reflect your network environment. The default LAN interface is set to 192.168.1.x/24. However, if the LAN interface was changed to 172.16.0.1 (subnet mask: 255.255.255.0), the IT administrator must configure each PC in the subnet using an available IP address from this subnet.

- **Setting:** Select Port1 (LAN1).
- **Interface:** Select LAN.
- **LAN Interface Mode:** Select NAT / Routing Mode.
- Fill in the **IP Address** and **Netmask** fields.

Step2: Interface Settings

Configure the interface settings for physical connections respectively. Click Next when done.

Physical Connection: Port1

Interface Settings

Interface Designation: LAN1

Interface Type: Disabled LAN WAN DMZ

Connection Type: NAT Routing Help

IPv4 Settings

IPv4 Address: 192.168.1.1

Netmask: 255.255.255.0

MAC Address: 00:90:0B:14:5D:B8

IPv6 Settings

Connecting using: Auto-configuration

IPv6 Address:

Prefix Length:

Access by / via: Help Ping HTTP HTTPS

< Back Next >

Figure7. Interface Settings

Important

Once the LAN interface is changed, please enter the new LAN IP address in the browser next time when you log in the CS-2001 Web UI.

Step 7. Configure the WAN Interface (please refer to your ISP for the settings).

- **Setting:** Select Port2 (WAN1)
- **Interface:** Select WAN
- **Connection Mode:** Select the required mode
- Configure the remaining settings.

Physical Connection : Port1

Interface Settings

Interface Designation : WAN1

Interface Type : Disabled LAN WAN DMZ

Connection Type : Static IP Address (Leased Line User)
 Dynamic IP Address (Cable Modem User)
 PPPoE (ADSL Dial-Up User)

IPv4 Settings

IPv4 Address : 210.86.155.84

Netmask : 255.255.255.224

IPv4 Default Gateway : 210.86.155.94

MAC Address : 00:30:4F:14:5D:B8

IPv6 Settings

Connecting using : Auto-configuration

IPv6 Address :

Prefix Length :

IPv6 Default Gateway :

Max. Downstream Bandwidth : 0 Kbps (1 - 512000)

Max. Upstream Bandwidth : 0 Kbps (1 - 512000)

Keepalive Properties :

[Help](#) Type : ICMP

Alive Indicator Site IP : 8.8.8.8

Keepalive Frequency : 5 second(s) (0 - 99, 0: no detection)

NAT Redirection : Auto-configuration

[Help](#)

Access by / via : Ping HTTP HTTPS

[Help](#)

< Back Next >

Figure 8. The WAN Settings

Step 8. Tick the **Synchronize to an NTP Server** box to ensure the system is provided with the accurate time.

System time : Tue, Dec 7 18:03:11 2010

Step 3 : Synchronization Settings

To ensure the reliability of recorded data, configure the time zone and synchronization settings. Click **Next** when done.

- Time Zone Setting :
The hours offset from GMT: hours [Assist Me](#)
- Synchronization Settings :
 Synchronize to an NTP server
 Observe daylight-saving time from / To /
Server IP or Hostname [Assist Me](#)
Update Interval: minutes (0 – 99999, 0: updated when system reboot)

Figure 9. Time Settings

Step 9. Enable Outgoing.

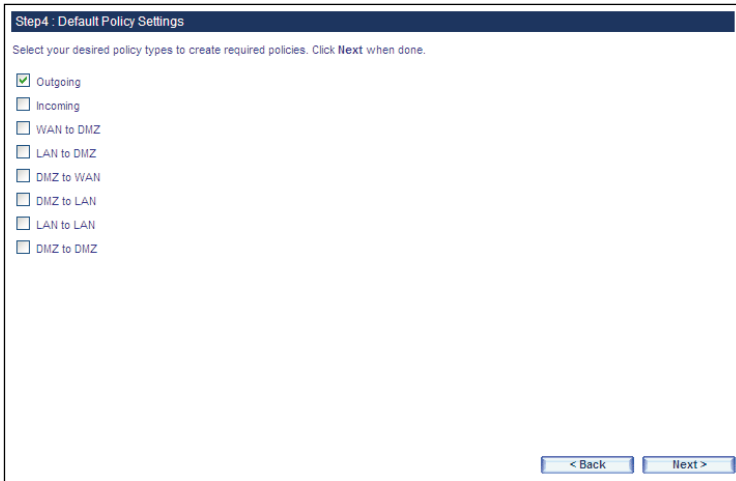


Figure 10. Enabling an Outgoing Policy

- Go to Policy > Outgoing and configure as below:
- Source Address: Select Inside_Any
- Destination Address: Select Outside_Any
- Service: Select ANY

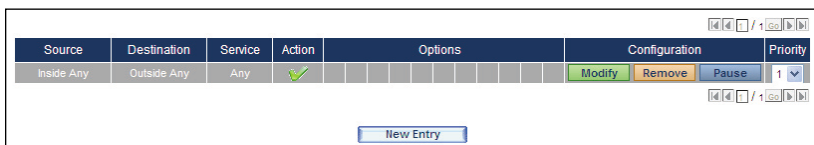


Figure 11. A Policy Allowing LAN Users to Access Any External Network Services

- Finally, configure all LAN PC addresses within the same domain as the LAN interface address, which is also the default gateway address for the LAN. Or, simply by using the DHCP to enable LAN PCs to obtain IP addresses, users may have Internet access right after configuring DHCP. To configure any network policies, please go to Policy Object and Policy.

Step 10. Provide the following CS-2001 interface information to LAN users.

Step5 : Settings Confirmation

Confirm the settings made from previous steps. Click **Finish** to complete the installation when confirmed. If not, click **Back** to modify settings.

Port	Name	Forwarding Mode	IP Address / Netmask
1	LAN1	NAT	192.168.10.1 / 255.255.255.0
2	Port2	---	0.0.0.0 / 0.0.0.0
3	WAN2	Static IP	61.62.236.15 / 255.255.255.0
4	Port4	---	0.0.0.0 / 0.0.0.0

Figure 12. Settings Confirmation

Step 11. Settings complete.

Installation Wizard

Installation completed. The page will reload automatically in 5 seconds.

Figure 13. Installation Wizard Completed

This page is intentionally left blank

This page is intentionally left blank