

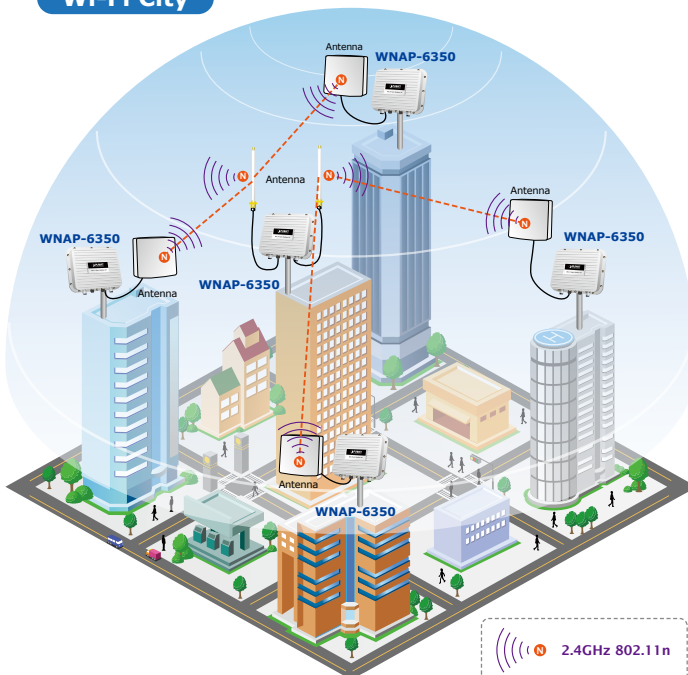
## 2.4GHz 300Mbps 802.11n Wireless Outdoor Access Point



### High Power Outdoor Wireless Coverage

PLANET Technology introduces the latest high power outdoor wireless LAN solution - the 300Mbps PoE wireless outdoor AP, WNAP-6350. It provides **higher transmit power, better performance, widely coverage** and more stable connection than standard wireless outdoor AP. As an IEEE 802.11b/g/n compliant wireless device, the WNAP-6350 is able to give stable and efficient wireless performance for long distance application; while designed with IEEE 802.11n standard and 2T2R MIMO technology makes it possible to deliver six times faster data rate up to 300Mbps than normal 802.11g wireless device. It also features adjustable output power up to 500mW to extend broader coverage in outdoor long range application. It also features adjustable output power to extend broader coverage in outdoor long range application.

### Wi-Fi City



### Industrial Compliant Wireless LAN & LAN

- Compliant with IEEE 802.11n wireless technology capable of up to 300Mbps data rate
- Backward compatible with 802.11b/g standard
- Equipped with 10/100Mbps RJ-45 Ports for LAN & WAN, Auto MDI / MDI-X supported

### Fixed-network Broadband Router

- Supported connection types: Dynamic IP / Static IP / PPPoE / PPTP / L2TP / IPSec
- Supports Virtual Server, DMZ for various networking applications
- Supports DHCP Server, UPnP, Dynamic DNS

### RF Interface Characteristics

- Built-in two N-Type Female Antenna connectors
- High Output Power up to 500mW with multiple adjustable transmit power control

### Outdoor Environmental Characteristics

- Aluminum Housing, IP67 Protection
- IEEE 802.3af/at Power over Ethernet design
- Operating Temperature: -30~75 Degree C

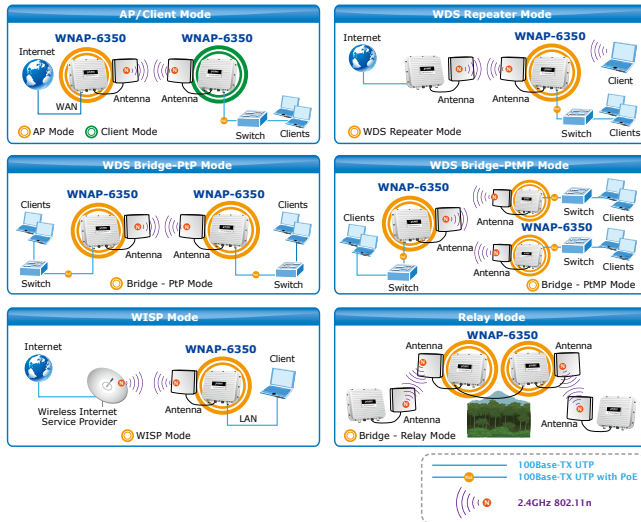
### Multiple Operation & Wireless Mode

- Multiple Operation Modes: Bridge, Gateway, WISP
- Multiple Wireless Modes: AP, Client CPE (WISP), WDS PtP, WDS PtMP, Repeater
- Supports Dual-SSID allowing users to access different networks through one single AP
- Supports WMM (Wi-Fi Multimedia)

**Multiple Operating & Wireless Modes**

The WNAP-6350 supports multiple types of wireless communication connectivity (AP, Client CPE, WDS PtP, WDS PtMP, Repeater) allowing for various application requirements and thus it gives users more comprehensive experience when accessing through Wireless LAN. It helps users to easily build a wireless network and extend the wireless range of existing wireless network.

The WNAP-6350 also supports WISP mode, so CPE users could easily connect to Internet via WISP provider or connect to a wired network.



**Advanced Security and Management**

In aspect of security, besides 64/128-bit WEP encryption, the WNAP-6350 integrates WPA / WPA2, WPA-PSK / WPA2-PSK and 802.1x authority to secure and protect your wireless LAN. The wireless MAC filtering and SSID broadcast control consolidate the wireless network security and prevent unauthorized wireless connection. To fulfill enterprise and various applications demand, the WNAP-6350 also provide multiple SSID to enhance security and management.

**Perfect Solution for Outdoor Environment**

The WNAP-6350 is perfectly suitable in outdoor environments and exposed locations. By designing with IP67 aluminum rugged strong housing, the WNAP-6350 can perform normally under rigorous weather conditions including heavy rain, wind and snow. Moreover, the WNAP-6350 is rated to operate at the temperature from -30 to 75 Degree C; thus it can operate more stably than general outdoor equipments. It is the best way using the WNAP-6350 to build outdoor wireless access applications between buildings on campuses, business, rural areas and etc.



**Secure Network Connection**

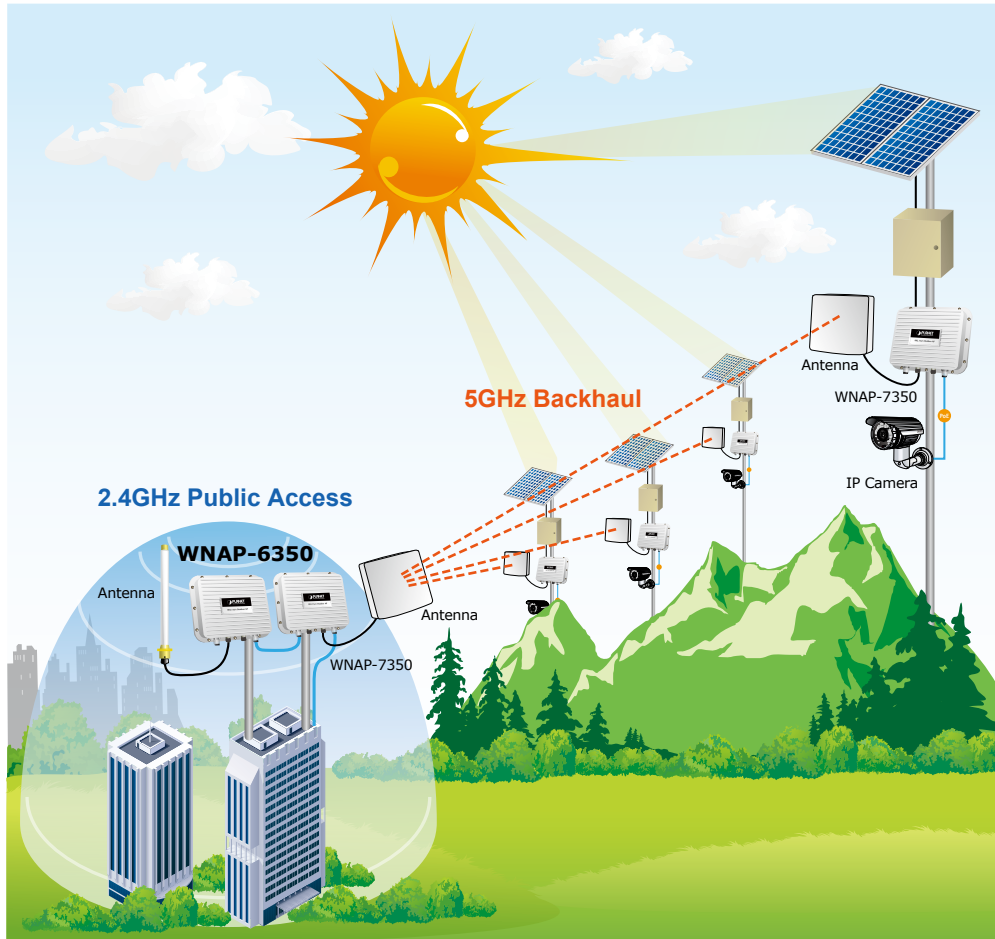
- Supports Software Wi-Fi Protected Setup (WPS)
- Advanced security: 64/128-bit WEP, WPA / WPA2, WPA-PSK / WPA2-PSK (TKIP/AES), and 802.1x Authentication
- Supports NAT firewall features, with SPI function to protect against DoS attacks
- Supports IP / Protocol-Based access control and MAC Filtering

**Easy Installation & Management**

- Web-Based UI and Quick Setup Wizard for easy configuration
- Remote Management allows configuration from a remote site
- SNMP-Based management interface
- System status monitoring includes DHCP Client, System Log

*Flexible Deployment with PoE Feature*

Compliant with IEEE 802.3af/at Power over Ethernet standard, the WNAP-6350 can be powered by PSE (Power Sourcing Equipment) via a single UTP cable. It thus reduces the needs of extra cables and dedicated electrical outlets on the wall, ceiling or any other places where are difficult to reach. Furthermore, the WNAP-6350 is also suitable to be integrated with PoE Solar Power System to offer farther Wireless service in remote areas. It enables the wireless LAN deployment becomes more flexible and worries free from the power outlet locations.



*Easy Installation & Management*

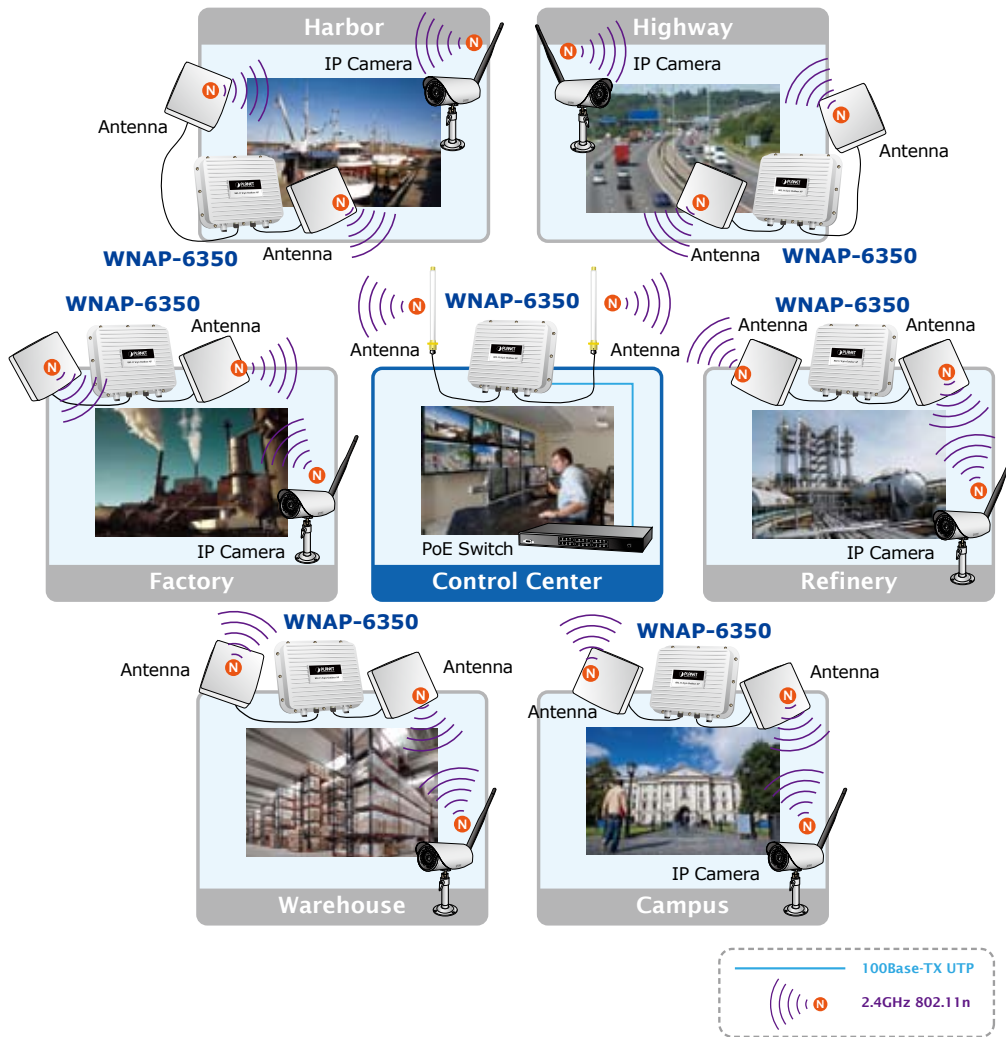
With user-friendly Web UI and step by step Setup Wizard, the WNAP-6350 is easy to install, even for users who never experience setting up a wireless network. Furthermore, with SNMP-Based management interface, the WNAP-6350 is convenient to be managed and configured remotely.

## Application

### Longer distance coverage between LAN connections

The WNAP-6350 is a cost-effective outdoor wireless solution for widely open space applications. It is ideal for outdoor wireless connections between buildings.

With built-in two N-Type Antenna connectors, the WNAP-6350 brings longer coverage of wireless connection. The WNAP-6350 provides high output power with multiple adjustable Tx controller, which allows CPE users to easily install and adjust the suitable value in appropriate locations. The WISP mode supported in the WNAP-6350 also enables CPE users to connect to Internet via local WISP provider conveniently.



\*\*Sincerely suggest matching the same model in outdoor wireless bridge application for getting best performance.

## Specification

Product	2.4GHz 300Mbps 802.11n Wireless Outdoor Access Point
Model	WNAP-6350
<b>Hardware Specifications</b>	
Standard	IEEE 802.11b/g/n Wireless LAN IEEE 802.11i Wireless Security IEEE 802.3 10Base-T Ethernet IEEE 802.3u 100Base-TX Ethernet IEEE 802.3x Flow Control IEEE 802.3af/at Power over Ethernet / PD
Memory	32 Mbytes DDR SDRAM 8 Mbytes Flash
Interface	Wireless IEEE 802.11b/g/n, 2T2R LAN: 1 x 10/100Base-TX, Auto-MDI / MDIX, IEEE 802.3af/at PoE / PD port WAN: 1 x 10/100Base-TX, Auto-MDI / MDIX
Antenna	N-Type Female connectors x 2
<b>Wireless RF Specifications</b>	
RF Modulation	IEEE 802.11b/g IEEE 802.11n
Data Rate	IEEE 802.11b: 11, 5.5, 2 and 1Mbps IEEE 802.11g: 54, 48, 36, 24, 18, 12, 9 and 6Mbps IEEE 802.11n (20MHz): up to 150Mbps IEEE 802.11n (40MHz): up to 300Mbps
Media Access Control	CSMA / CA
Modulation	Transmission/Emission Type: DSSS / OFDM Data modulation type: OFDM with BPSK, QPSK, 16-QAM, 64-QAM, DBPSK, DQPSK, CCK
Frequency Band	2.412GHz ~ 2.484GHz
Operating Channel	Europe/ ETSI: 2.412~2.472GHz (13 Channels)
RF Output Power (Max.)	IEEE 802.11b/g: 20dBm IEEE 802.11n: 18dBm
Receiver Sensitivity	IEEE 802.11b: -95/ -94/ -92/ -90dBm (1/ 2/ 5.5/ 11Mbps) IEEE 802.11g: -90/ -82/ -80/ -75dBm (6/ 24/ 36/ 54Mbps) IEEE 802.11n: -91/ -83/ -74/ -89/ -80/ -72dBm (MCS 0/ 3/ 6/ 9/ 12/ 15)
Output Power Control	1~20dBm
<b>Software Features</b>	
LAN	Built-in DHCP server supporting static IP address distributing Supports 802.1d STP (Spanning Tree)
WAN	<ul style="list-style-type: none"> <li>■ Static IP</li> <li>■ Dynamic IP</li> <li>■ PPPoE</li> <li>■ PPTP</li> <li>■ L2TP</li> <li>■ IPSec</li> </ul>
Wireless Mode	<ul style="list-style-type: none"> <li>■ Bridge</li> <li>■ Gateway</li> <li>■ WISP</li> <li>■ WDS PTMP</li> <li>■ WDS Repeater (AP+WDS)</li> </ul>
Channel Width	20MHz / 40MHz
Wireless Isolation	Enables isolation of each connected wireless client from communicating with each other mutually.
Encryption Type	64/128-bits WEP, WPA, WPA-PSK, WPA2, WPA2-PSK, 802.1X
Wireless Security	Provides wireless LAN ACL (Access Control List) filtering Wireless MAC address filtering Supports WPS (Wi-Fi Protected Setup ) Enable / Disable SSID Broadcast
Multiple SSID	Up to 2
Max. Wireless Client	40
Max. WDS AP	8
Max. Wired Client	60
WMM	Supports Wi-Fi Multimedia
QoS	Supports Quality of Service for bandwidth control
NTP	Network Time Management
Management	Web UI, DHCP Client, Configuration Backup & Restore, Dynamic DNS, SNMP
Diagnostic tool	System Log, Ping Watchdog

Mechanical & Power	
IP Rate	IP67
Material	Aluminum
Dimension (W x D x H)	320 x 27.5 x 320 mm
Weight	2.4kg
Installation	Pole mounting or Wall mounting
Power Requirements	AP: IEEE 802.3af/at PoE / 48VDC input (PoE Injector included) PoE Injector: 100~240VAC
Power Consumption	7.68W
Environment & Certification	
Operation Temperature	-30~75 Degree C
Operating Humidity	10~95% non-condensing
Regulatory	CE / RoHS
Accessory	
Standard Accessories	<ul style="list-style-type: none"> <li>■ 48VDC IEEE 802.3af/at PoE injector &amp; Power cord x 1</li> <li>■ Mounting Kit x 1</li> <li>■ Waterproof RJ-45 Connector Kit x 2</li> <li>■ Quick Installation Guide x 1</li> <li>■ CD (User's Manual, Quick Installation Guide) x 1</li> </ul>

## Ordering Information

WNAP-6350	2.4GHz 300Mbps 802.11n Wireless Outdoor Access Point - ETSI
-----------	---

## Accessories

CB-STP-25	25 Meters STP Cat5 Cable
ELA-100	Ethernet Lightning Arrest Box
ANT-OM8	2.4GHz 8dBi Omni-Directional Antenna
ANT-OM15	2.4GHz 15dBi Omni-Directional Antenna
ANT-FP9	2.4GHz 9dBi Flat Panel Directional Antenna
ANT-FP18	2.4GHz 18dBi Flat Panel Directional Antenna
ANT-SE18	2.4GHz 12-18dBi Adjustable Sector Antenna
ANT-YG13	2.4GHz 13dBi Yagi Directional Antenna
ANT-YG20	2.4GHz 20dBi Yagi Directional Antenna
ANT-GR21	2.4GHz 21dBi Grid Directional Antenna
WL-NM-0.6	0.6 Meter N-male (male pin) to N-male (male pin) Cable
WL-LTNA	2.4/5GHz Lightning Arrester (N-male to N-female)

## Related PoE Product

ISW-1022MPT	8-Port 10/100Mbps + 2-Port Gigabit TP/SFP Combo PoE Managed Industrial Switch with Wide Operating Temperature
ISW-514PTF	4-Port 10/100Mbps with PoE + 1-Port 100FX Industrial Ethernet Switch – Wide Temperature
ISW-804PT-M12	Industrial IP67 Rated 8-Port 10/100Mbps M12 Fast Ethernet PoE Switch with Wide Operating Temperature
IVC-2004PT	4-Port 10/100Base-TX with PoE + 1-Port BNC / RJ-11 Industrial Ethernet Extender
IPOE-162	Industrial IEEE 802.3at Gigabit High Power over Ethernet Injector (Mid-Span)
FTP-802	100Base-FX to 10/100Base-TX PoE Media Converter
SGSW-24040P	24-Port Gigabit PoE Managed Stackable Switch / 220W
POE-E101	IEEE 802.3af Power over Ethernet Extender

### PLANET Technology Corporation

11F., No.96, Minquan Rd., Xindian Dist., New Taipei City  
231, Taiwan (R.O.C.)  
Tel: 886-2-2219-9518 Fax: 886-2-2219-9528  
Email: sales@planet.com.tw www.planet.com.tw



PLANET reserves the right to change specifications without prior notice. All brand names and trademarks are property of their respective owners. Copyright © 2013 PLANET Technology Corp. All rights reserved.

WNAP-6350\_ASME