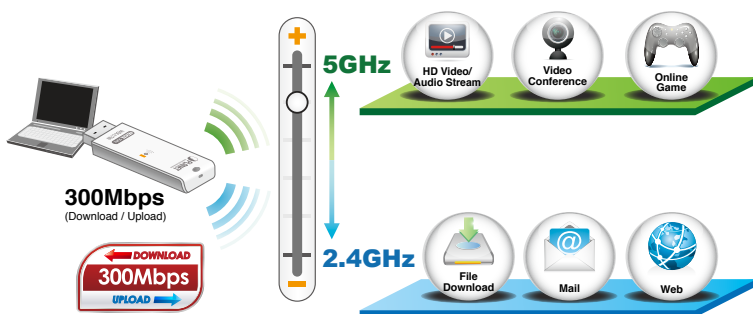


300Mbps Dual Band 802.11n Wireless USB Adapter



2.4G & 5G Dual Band Wireless Connectivity

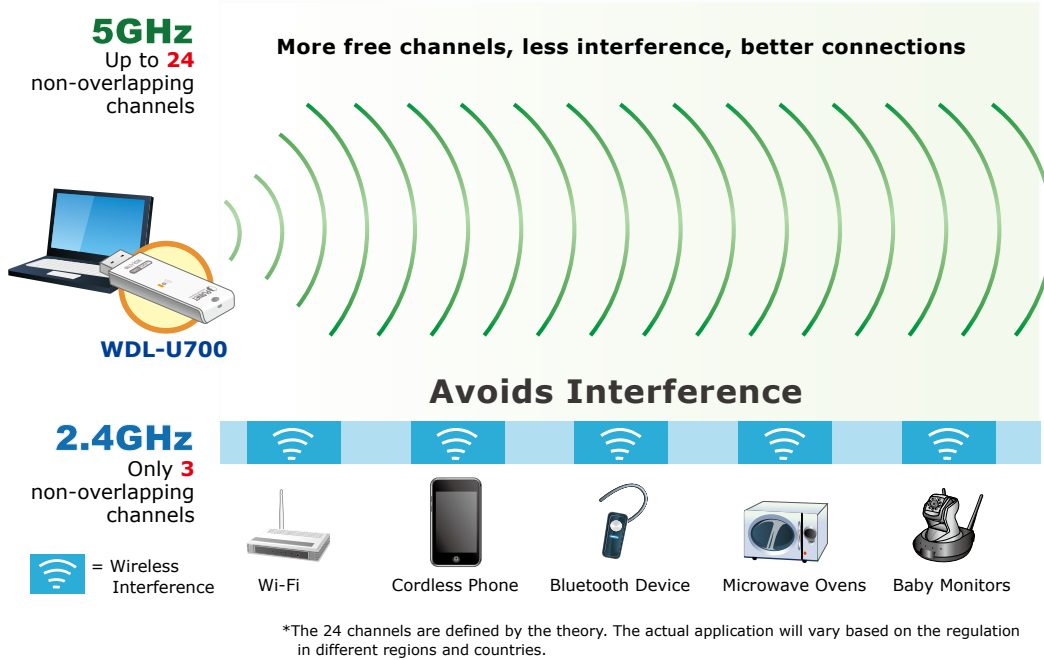
The WDL-U700 is a cost-effective, highly integrated USB Wireless Adapter containing the dual band technology that supports 2.4GHz or 5GHz wireless signals on a Wireless Adapter. It supports up to 300Mbps data rate and fully complies with 802.11a/b/g/n specifications, providing feature-rich wireless connectivity at high standards, and delivering reliable throughput from an extended distance. Designed in optimized RF architecture and baseband algorithms, the WDL-U700 provides superb performance with low power consumption. The WDL-U700 Wireless USB Adapter complies to standard based features in the areas of security, quality of service and international regulation, and therefore gives end users the greatest performance anytime in any circumstance.



- 2.4GHz & 5GHz Dual Band Wireless Connectivity
- Complies with IEEE 802.11a/n & IEEE 802.11b/g/n Standard
- 5GHz band supports to optimize HD video streaming and online gaming
- Built-in internal antennas with 2T2R MIMO technology
- Maximal speed up to 300Mbps upload and download
- USB 2.0 / 1.1 attached interface
- Supports Software AP mode
- Supports WEP 64/128-bit, WPA, WPA-PSK, WPA2, WPA2-PSK (TKIP/AES encryption)
- Wi-Fi Protected Setup (WPS) support
- Supports QoS-WMM (WiFi Multi-Media) function / WMM-PS
- Easy Wireless configuration utility
- Easy to install using the multi-language setup wizard
- Windows XP, Win7, Win 8, Linux, and MAC OS X ready
- Low Power usage with Advanced Power Management

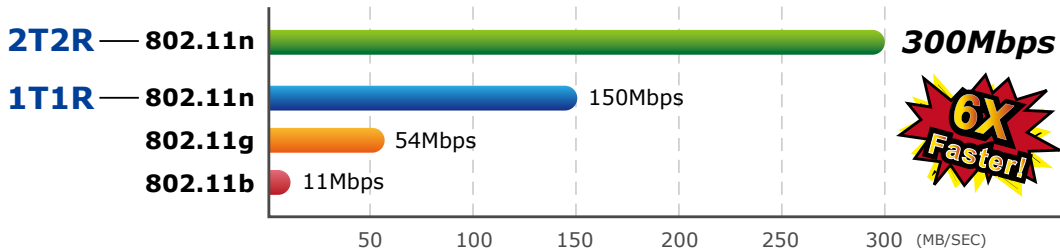
Benefits of High Speed 5GHz Signal

Since there are more and more wireless applications and electric devices using the radio frequency of 2.4GHz, the wireless channel of 2.4GHz has been already too crowded for clients to enjoy the high-speed wireless connection. In order to avoid the wireless interference between each other, the WDL-U700 provides users the radio frequency of 5GHz for watching HD videos or playing online games additionally. This function makes the WDL-U700 more suitable for multimedia applications requiring wider bandwidth.



High Speed 802.11n Wireless Experience

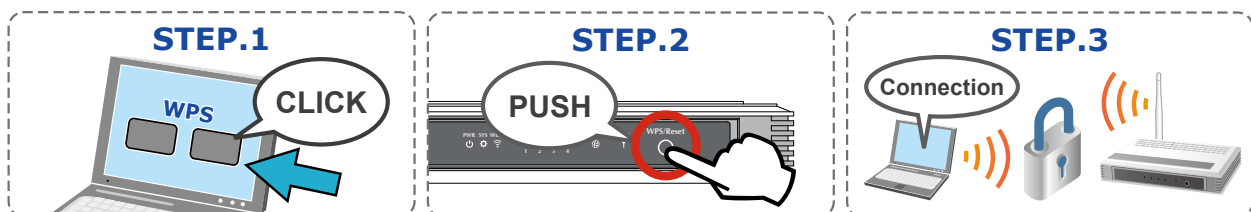
The WDL-U700 offers a reliable and cost effective wireless extending solution. It adopts IEEE 802.11n standard with 2T2R antenna technology and is backward compatible with IEEE 802.11b and 802.11g. The WDL-U700 supports USB 2.0 interface that integrates with one transmit channel and one concurrent receive channel to enable the speed up to 300Mbps for both data upload and download.



Advanced Wireless Security

The WDL-U700 provides advanced security features including 64/128-bit WEP, WPA / WPA2 and WPA-PSK / WPA2-PSK with TKIP/AES encryption. Furthermore, in order to simplify the security configurations, WPS (Wi-Fi Protected Setup) function is included to offer a convenient and fast connection method for users as well.

WPS (Wi-Fi Protected Setup)
Quick & Easy Wireless connection

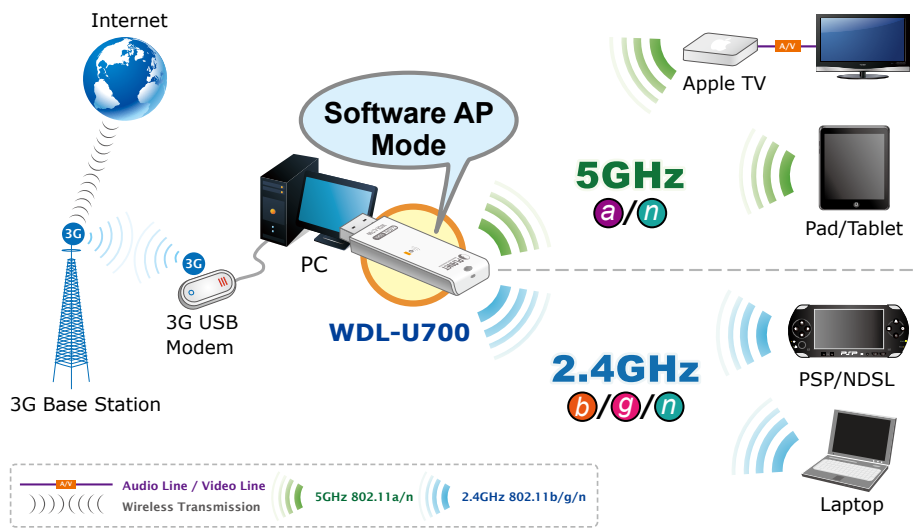


Multiple OS Compliant

Enabling convenient application, the WDL-U700 supports most popular operating systems including Windows 2000, XP, Vista, Win7, Linux, and MAC OS X. With high speed capability, users can have higher wireless transmission speed anywhere and anytime.

Software Access Point Function for Wireless Connection Sharing

More than just being an adapter for PC and laptop connecting to high speed wireless network, the WDL-U700 can also become a wireless access point. By applying the USB Wireless LAN Utility included in the package, users can switch the WDL-U700 operation mode between Station mode and Access Point mode. When the WDL-U700 is in the Access Point mode, it turns to a Wi-Fi Hotspot. The Wi-Fi supported devices such as iPhone / Android / Windows Phone / iPad / NDS / PSP can connect to it and share the wireless access easily. Therefore, travelers would then be worry free to connect to Internet wirelessly via the WDL-U700 when there is only wired Internet available.



Application

Flexible Dual Band WiFi Connection

By simply inserting the Dual Band Wireless USB adapter WDL-U700 into your PC, MAC or laptop, you can easily connect to various 2.4GHz or 5GHz wireless network with high-speed and stable wireless quality. To avoid signal interference and ensure the best Wi-Fi performance, the WDL-U700 delivers the Dual Band technology to provide users flexible options to connect to the wireless network with either 2.4GHz or 5GHz frequency band. Users can check e-mail, surf the Internet and transmit data via the 2.4GHz band; on the other hand, watching High-Definition (HD) video or playing on-line gaming via the 5GHz band. With outstanding stable high-speed wireless transmission, the WDL-U700 can provide users excellent experience of multimedia streaming.



Easy and User-friendly Installation

The WDL-U700 is a perfect choice for wireless connectivity. It takes advantage of flexibility and convenience of USB2.0 interface, and offers fully mobility and high availability by easy installation and true "Plug & Play" operation.

Specification

Product	300Mbps Dual Band 802.11n Wireless USB Adapter	
Model	WDL-U700	
Hardware Specification		
Interface	USB 2.0, Type-A	
Antenna Type	Internal antenna	
LED	1 x Link / Active (Amber)	
Operation Voltage	5V DC, power input from USB port	
Dimension (W x D x H)	24 x 86 x 10 mm with USB cap 24 x 83 x 10 mm without USB cap	
Wireless Specification		
Standards Conformance	IEEE 802.11n standard compliant IEEE 802.11b/g backwards compatible IEEE 802.11a backwards compatible	
RF Modulation	BPSK, QPSK, CCK OFDM (BPSK/QPSK/16-QAM/ 64-QAM)	
Frequency Band	2.4-2.4835 GHz 5.180~5.240GHz 5.260~5.320GHz 5.745~5.825GHz	
Operating Channel	802.11a/n <ul style="list-style-type: none"> ■ USA/Canada: 24 non-overlapping channels ■ Major Europe Countries: 19 non-overlapping channels ■ Japan: 19 non-overlapping channels ■ China: 5 non-overlapping channels 	802.11b/g/n <ul style="list-style-type: none"> ■ USA/Canada: 11 (1-11) ■ Major Europe Countries: 13 (1-13) ■ France: 4 (10-13) ■ Japan: 14 for 802.11b (1-13 or 14th), 13 for 802.11g (1-13) ■ China : 13 (1-13)
Data Rate	802.11a: 54, 48, 36, 24, 18, 12, 9 and 6Mbps 802.11b: 11, 5.5, 2 and 1 Mbps with auto-rate fall back 802.11g: 54, 48, 36, 24, 18, 12, 9 and 6Mbps 802.11n (20MHz): up to 144.4Mbps 802.11n (40MHz): up to 300Mbps	
Wireless Transmit Power (EIRP)	20dBm (max)	
Receiver Sensitivity	IEEE 802.11n HT40: -61dBm@10% PER IEEE 802.11n HT20: -64dBm@10% PER IEEE 802.11g: -65dBm@10% PER	IEEE 802.11b: -85dBm@8% PER IEEE 802.11a: -65dBm@10% PER
Operating Mode	Ad-Hoc / Infrastructure, Soft AP	
Encryption Security	WEP 64/128-bit WPA / WPA2 (TKIP/AES) WPA-PSK / WPA2-PSK (TKIP/AES)	
Wireless Advanced	Supports 802.11e WMM (Wi-Fi Multimedia) Supports Software WPS (Wi-Fi Protected Setup)	
Management	The utility included in the package or Windows XP Zero Configuration utility	
Operating Systems	Windows 2000/XP (x86/x64) / VISTA (x86/x64) / Win7 (x86/x64) Linux Kernel 2.4 /2.6 Macintosh 10.4/10.5/10.6/10.7/10.8	
Certification		
Emission	CE, FCC	
Environment		
Operating Temperature	0 ~ 40 Degree C (32 ~ 104 Degree F)	
Humidity	10 ~ 90%, non condensation	
Package		
Package Content	<ul style="list-style-type: none"> ■ WDL-U700 (300Mbps 802.11n Wireless USB adapter) ■ Quick Installation Guide ■ CD (includes driver, utility, user's manual) 	

Ordering Information

WDL-U700	300Mbps Dual Band 802.11n Wireless USB Adapter
----------	------------------------------------------------

Related Product

WDRT-730	300Mbps Dual Band 802.11n Wireless Gigabit Router
WDRT-731U	300Mbps Dual-Band 802.11n Wireless Gigabit Router

PLANET Technology Corporation

11F., No.96, Minquan Rd., Xindian Dist., New Taipei City
231, Taiwan (R.O.C.)
Tel: 886-2-2219-9518 Fax: 886-2-2219-9528
Email: sales@planet.com.tw www.planet.com.tw



PLANET reserves the right to change specifications without prior notice. All brand names and trademarks are property of their respective owners. Copyright © 2013 PLANET Technology Corp. All rights reserved.

WDL-U700