

1. Package Contents

Thank you for purchasing PLANET Wireless LAN Controller. The descriptions of the models are shown below:

WAPC-500	Enterprise-class WLAN Controller over 500 APs
WAPC-1000	Enterprise-class WLAN Controller over 1000 APs

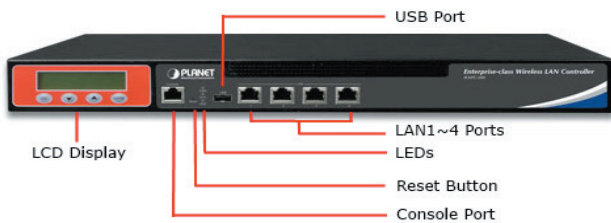
“WLAN Controller” is used as an alternative name in this Quick Installation Guide.

Package Contents:

- The WLAN Controller x 1
- Quick Installation Guide x 1
- RS232 to RJ45 Console Cable x 1
- Power Cord x 1
- Rack-mounting Brackets with Screws x 2

If any item is found missing or damaged, contact local reseller for replacement.

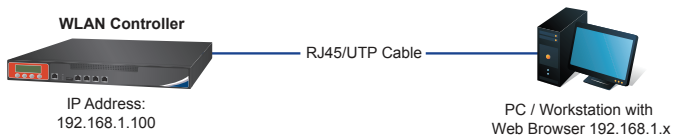
2. Hardware Description



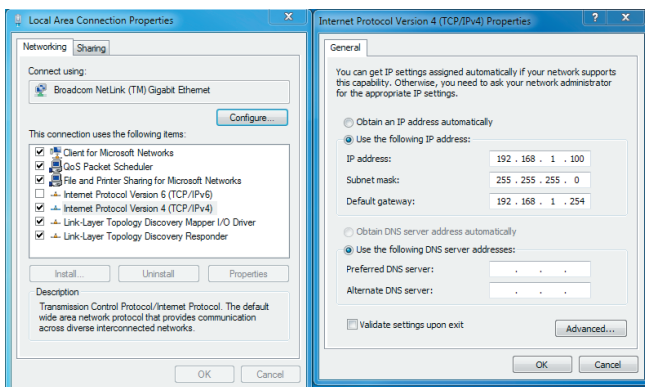
Reset Button < 5 sec: System reboot; > 5 sec: Factory default

3. Wired Network Configuration

A computer with wired Ethernet connection is required for the first-time configuration of the WLAN Controller.



1. Go to “Control Panel-> Network and Sharing Center-> Change Adapter Settings”
2. Double-click “Local Area Connection”.
3. Select “Internet Protocol version 4 (TCP/IPv4)” and click “Properties”.
4. Select “Use the following IP address” and then click the “OK” button twice to save the configuration. For example, the default IP address of the WLAN Controller is 192.168.1.100, then the manager PC should be set to 192.168.1.x (where x is a number between 1 and 254, except 100), and the default subnet mask is 255.255.255.0.

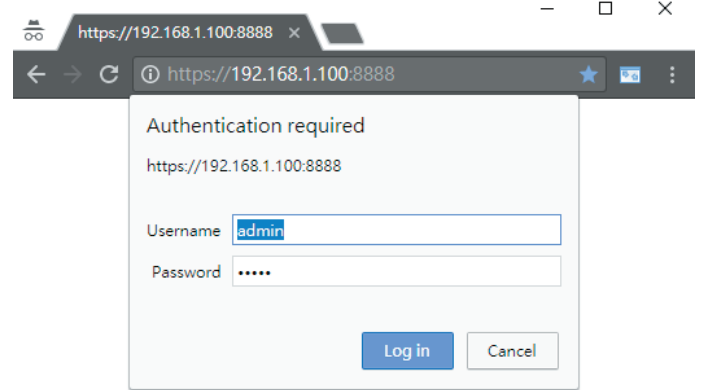


4. Entering into the Web Management

Default IP Address: **192.168.1.100**
Default Management Port: **8888**
Default Username: **admin**
Default Password: **admin**

Launch the Web browser (Google Chrome is recommend) and enter the default IP address “https://192.168.1.100:8888”. Then, enter the default username and password shown as above to logon the system.

* The secure login with SSL (HTTPS) prefix is required.



After logon, connect the WLAN Controller to the managed network to centrally control the PLANET Smart AP series

5. AP Discovery through the WLAN Controller

There are different models including indoor and outdoor AP series that can be managed by WLAN Controller. For the AP models supporting “Managed AP” mode, please switch them to “Managed AP” mode. For the AP models that do not support DHCP IP, please configure them to use a different static IP before connecting them to the same managed network. If you prefer to use DHCP IP for the AP models that support DHCP IP, please ensure the DHCP server exists in the managed network.

Please regularly check PLANET website for the latest managed AP compatibility list.

Follow the steps below to set up the AP from the “Standalone AP” mode to the “Managed AP” mode.

Step 1. Connect the AP, WLAN Controller and your computer to the same network.



www.PLANET.com.tw

Enterprise-class Wireless LAN Controller

▶ WAPC-500 / WAPC-1000



PLANET Technology Corp.

10F., No. 96, Minquan Rd., Xindian Dist., New Taipei City 231, Taiwan

Warning:
This is a class A product. In a domestic environment this product may cause radio interference in which case the user may be required to take adequate measures.



2011-E71010-000

Step 2. Log in to the AP's Web User Interface and refer to the picture below to configure the AP to **"Managed AP"**. Then, click **"Apply Change"**.

Step 3. In the **WLAN Controller** management UI, go to **"Search"** page to discover and add the managed AP to the device list.

Then, you can go to **"Control-> AP Management"** page to configure pre-defined profiles to the managed AP without logging on to the AP's web page.

ID	MAC Address	Model No.	Version	Device IP	Device Description
1	a8:f7:e0:00:00:01	WDAP-C7200AC	1.3485cb180305	192.168.1.227	Wi-Fi_11ac_AP

For information about further configuration of **Managed AP** by using **PLANET WLAN Controller**, refer to the user manual of the WAPC WLAN Controller series.

Further Information:

The above steps introduce the simple installations and configurations of the WLAN Controller. For further configurations of AP management, please refer to the user manual, which can be downloaded from the website.

<http://www.planet.com.tw/en/support/download.php?type1=4&model=&type=3>



If you have further questions, please contact the local dealer or distributor where you purchased this product.