

## 750Mbps 802.11ac Dual Band In-Wall Wireless AP

WDAP-W750E



### 1. Package Contents

Thank you for choosing PLANET WDAP-W750E. Before installing the AP, please verify the contents inside the package box.

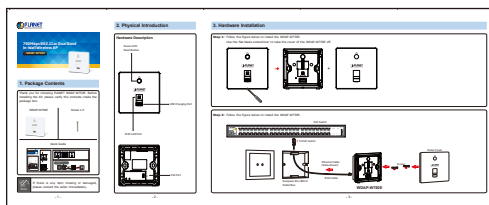
WDAP-W750E



Screw x 2



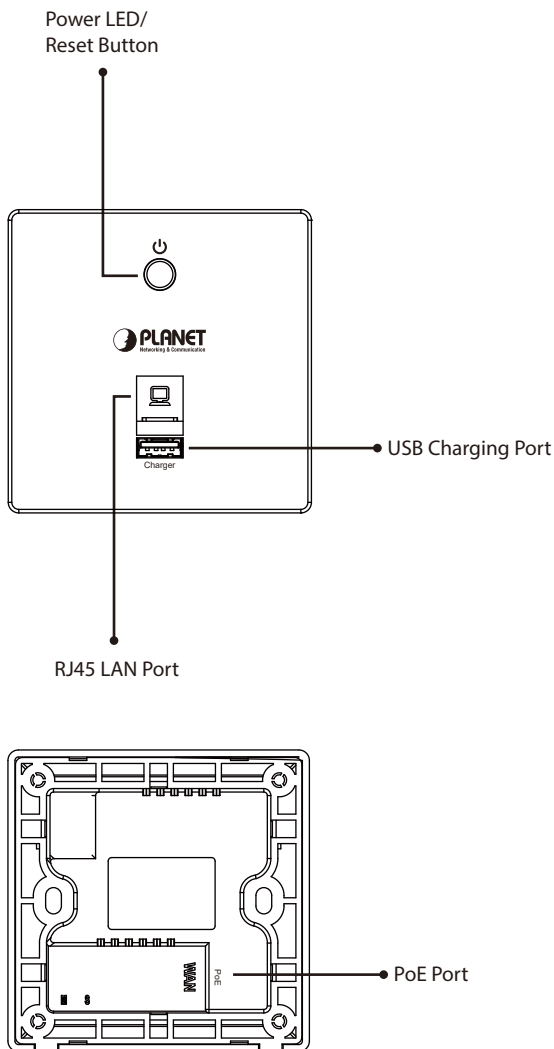
Quick Guide



If there is any item missing or damaged, please contact the seller immediately.

### 2. Physical Introduction

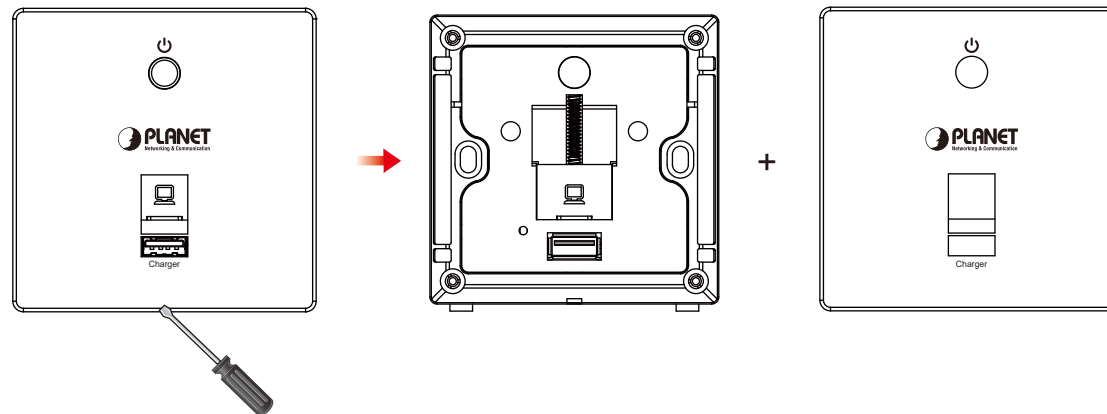
#### Hardware Description



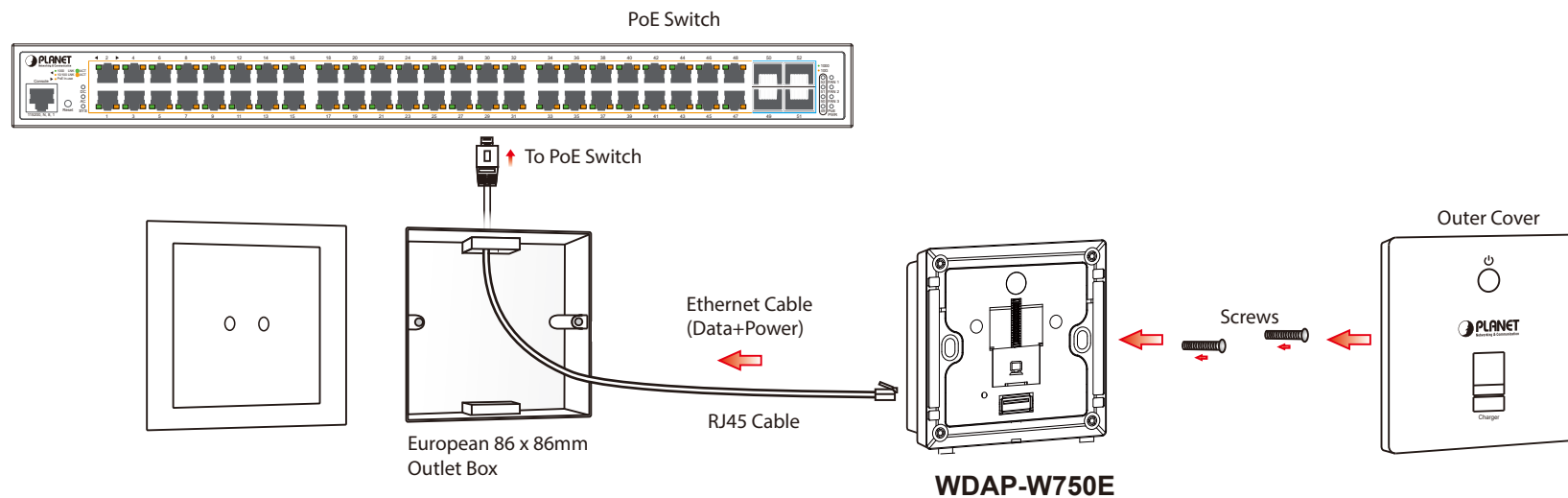
### 3. Hardware Installation

**Step 1:** Follow the figure below to install the WDAP-W750E.

Use the flat-blade screwdriver to take the cover of the WDAP-W750E off.



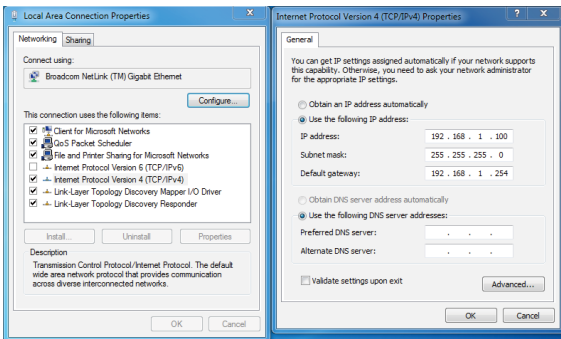
**Step 2:** Follow the figure below to install the WDAP-W750E.



## 4. Wired Network Configuration (Windows 7 and Windows 10)

A computer with wired Ethernet connection is required for the first-time configuration of the Wireless AP.

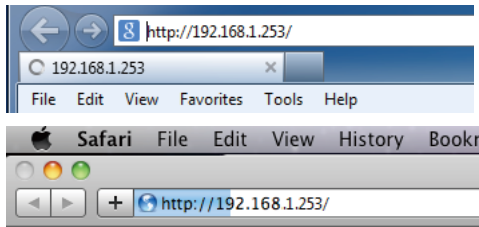
1. Click the **“Start”** button located at the lower-left corner of your computer.
2. Click **“Control Panel”**.
3. Double-click the **“Network and Sharing Center”** icon.
4. Click **“Change Adapter Settings”**.
5. Double-click **“Local Area Connection”**.
6. Select **“Internet Protocol Version 4 (TCP/IPv4)”** and click **“Properties”**.
7. Select **“Use the following IP address”**, and then click the **“OK”** button twice to save the configuration. For example, as the default IP address of the WDAP-W750E is 192.168.1.253 and the router is 192.168.1.254, you may choose from 192.168.1.1 to 192.168.1.252.



## 5. Enter into the Web Management

Default IP Address: **192.168.1.253**  
Default Username: **admin**  
Default SSID: **PLANET\_2.4G / PLANET\_5G**  
Default Wireless Encryption Type: **None**

**Step 1:** The Web management allows you to access and manage the WDAP-W750E easily. Launch the Web browser and enter the default IP address **<http://192.168.1.253>**

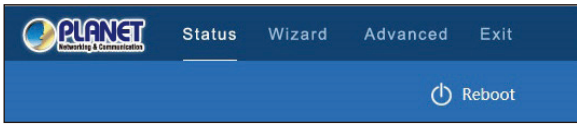


**Step 2:** When the login window pops up, please enter the password. The default password is **“admin”**. Then click the **LOGIN** button to continue.



For security reasons, it is recommended to change the password at the first login and memorize it.

**Step 3:** After you enter into the Web User Interface, go to **Advanced** to configure your wireless network. For security reasons, we strongly recommend you to configure the Encryption Method and Passphrase of your wireless network.



**Step 4:** Once the basic configuration of the WDAP-W750E is done, click the **“Apply”**.

## 6. Wireless Network Connection

**Step 1:** Right-click on the **network icon** displayed in the system tray of your laptop or PC.



**Step 2:** Highlight the wireless network (SSID) to connect and click the **[Connect]** button.



**Step 3:** Enter the **encryption key** of the WDAP-W750E if necessary.

You have already finished the configuration of the WDAP-W750E. Now you can use your iPhone, iPad, laptop or any other Wi-Fi device to connect with it wirelessly and start surfing the internet.

## Further Information:

The above steps introduce the simple installations and configurations of the WDAP-W750E. For further configurations of different operation modes, please refer to the user manual, which can be downloaded from the website.

<https://www.planet.com.tw/en/support/downloads?method=keyword&keyword=WDAP-W750E&view=3#list>



If you have further questions, please contact the local dealer or distributor where you purchased this product