

# Product Specifications

5-Port 10/100/1000T VPN Security Router  
**VR-100**

Version 1.0

This document contains confidential proprietary information and is property of PLANET. The contents of this document should not be disclosed to unauthorized persons without the written consent of PLANET.

Change History:

Revision	Date	Author	Change List
Version 1.0	2019/08/15	Keithy	Initial release

Author	Keithy	Editor:	Mark
Reviewed by:	Jonas	Approved by:	Kent

## 1. PRODUCT DESCRIPTION

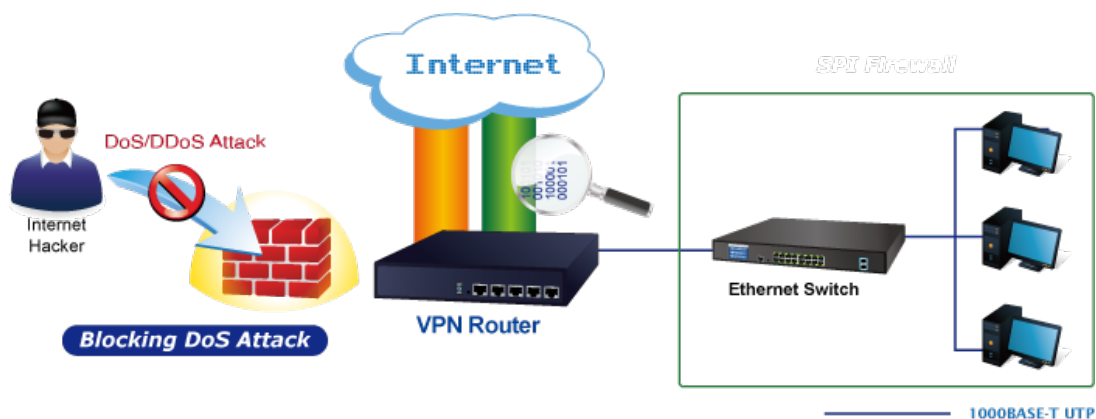


### Powerful VPN Security Solution

The innovation of the Internet has created tremendous worldwide opportunities for e-business and information sharing. It has become essential for businesses to focus more on network security issues. The demand for information security has become the primary concern for the enterprises. To fulfill this demand, PLANET has launched the VR-100 VPN Security Router, an all-in-one appliance that carries several main categories across your network security deployments: SPI firewall security protection, policy auditing (Content Filtering, VPN Tunnel and MAC/IP Filtering), and easy management (Setup Wizard, DHCP Server and Dashboard). Furthermore, its Dual-WAN Failover and Outbound Load Balance features can improve the network efficiency while the web-based interface provides friendly and consistent user experience.

### Excellent Ability in Threat Defense

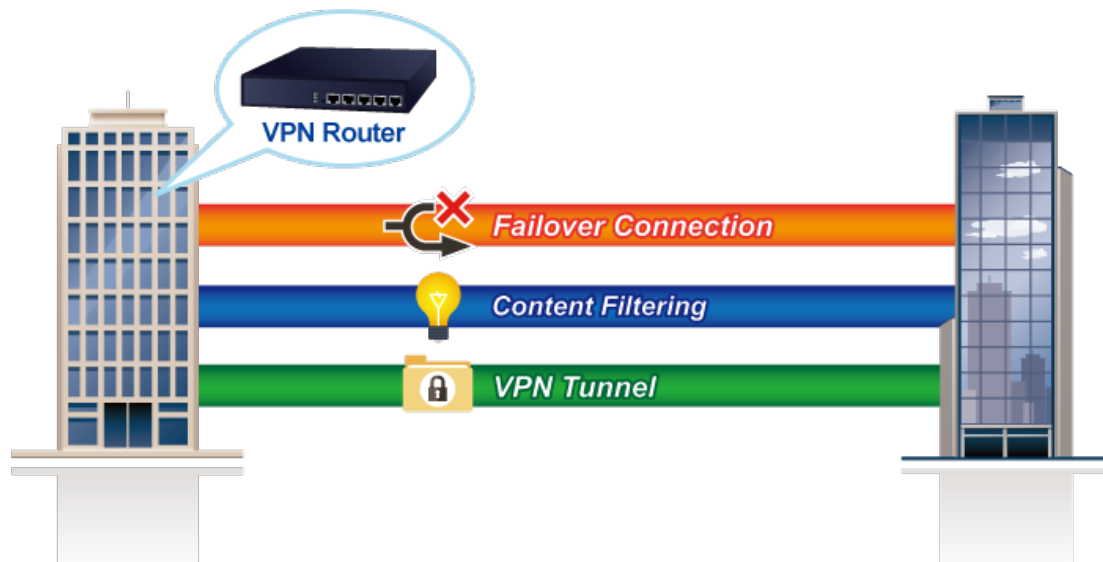
The VR-100 built-in SPI (Stateful Packet Inspection) firewall and Blocking DoS/DDoS attack functions provide high efficiency and extensive protection for your network. Virtual Server and DMZ functions can let you setup servers in the Intranet and still provide services to the Internet users.



## Ideal VPN Security Router Solution for SMBs

The VR-100 provides complete data security and privacy for accessing and exchanging most sensitive data, built-in IPSec VPN function with DES/3DES/AES encryption and MD5/SHA-1/SHA-256/SHA-384/SHA-512 authentication, and GRE, SSL, PPTP and L2TP server mechanism. The full VPN capability in the VR-100 makes the connection solid secure, more flexible, and more capable.

The VR-100 supports many popular security features including Content Filtering to block specific URL, MAC/IP filtering, outbound load-balancing, QoS and more. Furthermore, it provides higher performance with all Gigabit Ethernet interfaces which offer faster speeds for your network applications. The Gigabit user-defined interfaces flexibly fulfill the network requirement nowadays, and the Dual-WAN interfaces enable the VR-100 to support outbound load balancing and WAN fail-over features.



## Cybersecurity Network Solution to Minimize Security Risks

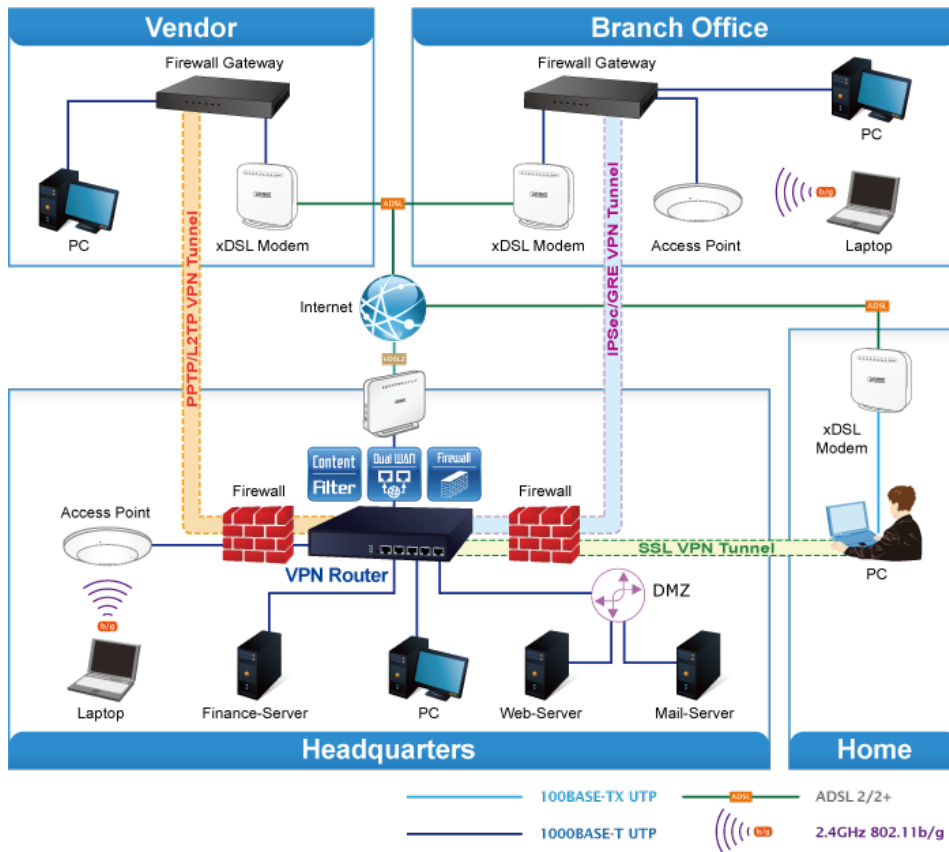
The cybersecurity feature included to protect the switch management in a mission-critical network virtually needs no effort and cost to install. For efficient management, the VR-100 is equipped with HTTPS web and SNMP management interfaces. With the built-in web-based management interface, the VR-100 offers an easy-to-use, platform independent management and configuration facility. The VR-100 supports SNMP and it can be managed via any management software based on the standard SNMP protocol.

## Improving Network Efficiency

The VR-100 has link redundancy, Content Filtering and many more functions to make the entire network system better. It is applicable to the small-scale sector (from 10 to 50 people), using a 9-inch desktop design, with five Gigabit ports (WAN/LAN). The VR-100's economical price with complete cable management features make it an inevitable choice for the next-generation office network load balancer.

The VR-100's built-in Content Filtering feature can automatically resolve the IP address corresponding to all. Users' network can be easily managed by just typing the URL of the websites like Facebook, YouTube and Yahoo.

The VR-100 can connect dual WANs with up to two different ISPs. It creates a stable and qualified VPN connection for many important applications such as VoIP, video conferencing and data transmission.



## 2. PRODUCT FEATURES

### Hardware

- 5 10/100/1000BASE-T RJ45 ports
- 1 undefined Ethernet port (LAN/WAN)
- Dual-WAN function
- 1 USB 3.0 port for system configuration backup and restore
- Reset button
- Desktop installation or rack mounting (optional)
- Fanless design

### IP Routing Feature

- Static Route
- Dynamic Route

### Firewall Security

- Stateful Packet Inspection (SPI) firewall
- Blocks DoS/DDoS attack
- Content filtering
- MAC/IP filtering
- Blocks SYN/ICMP flooding

### VPN Features

- IPSec (Host to Host)/GRE/PPTP server/L2TP/SSL (Open VPN)
- Max. Connection Tunnel Entries: 60 VPN tunnels,
- Encryption methods: DES, 3DES, AES, AES-128/192/256
- Authentication methods: MD5, SHA-1, SHA-256, SHA-384, SHA-512

### Networking

- Outbound load balancing
- Failover for dual-WAN
- Static IP/DHCP client for WAN
- Protocols: TCP/IP, UDP, ARP, IPv4, IPv6
- Port forwarding
- DMZ
- SNMP
- DHCP server/NTP client

- MAC address clone
- DDNS: PLANET DDNS, PLANET Easy DDNS, DynDNS and No-IP
- Cybersecurity

### **Others**

- Setup wizard
- Dashboard for real time system overview
- Supported access by HTTP or HTTPS
- Auto reboot
- PLANET Smart Discovery utility/UNI-NMS supported

### 3. PRODUCT SPECIFICATIONS

#### 3.1 Main Components

<b>CPU</b>	Dual-core MIPS1004Kc (880 MHz)
<b>RAM</b>	512MB
<b>Flash</b>	16MB

#### 3.2 Functional Specifications

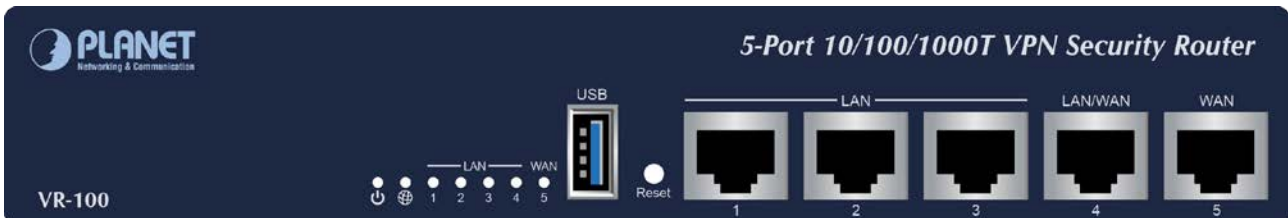
<b>Product</b>	VPN security router
<b>Model</b>	VR-100
<b>Hardware</b>	
<b>Ethernet</b>	5 10/100/1000BASE-T RJ45 Ethernet ports including <ul style="list-style-type: none"> <li>■ 3 LAN ports</li> <li>■ 1WAN port</li> <li>■ 1 LAN/WAN port</li> </ul>
<b>USB Port</b>	1 USB 3.0 port for system configuration backup and restore
<b>Reset Button</b>	Reset to factory default
<b>Thermal Fan</b>	Fanless
<b>LED Indicators</b>	PWR (Green) Internet (Green) LAN/WAN (Green)
<b>Installation</b>	Desktop installation or rack mounting (optional)
<b>Power Requirements</b>	100-240V AC, 1A max.
<b>Power Consumption</b>	13W max.
<b>Weight</b>	0.85kg
<b>Dimensions (W x D x H)</b>	215.2 x 135 x 42.6 mm
<b>Software</b>	
<b>Management</b>	Web browser
<b>Operation Mode</b>	Routing mode
<b>Routing Protocol</b>	Static route: 32 Dynamic route: 4096
<b>NAT Throughput</b>	Max. 900Mbps
<b>Firewall Security</b>	Stateful packet inspection (SPI) Blocks DoS/DDoS attack
<b>Outbound Load Balancing</b>	Supported algorithms: Weight
<b>Protocol</b>	IPv4, IPv6, TCP/IP, UDP, ARP, HTTP, HTTPS, NTP, DNS, PLANET DDNS, PLANET Easy DDNS, DHCP, SNMP,
<b>Content Filtering</b>	MAC filtering IP filtering Web filtering
<b>Log</b>	System Operation Log
<b>Others</b>	Outbound load balancing Failover for dual-WAN Port forwarding DMZ Cybersecurity Dashboard Setup wizard

	Auto reboot PLANET Smart Discovery utility/UNI-NMS supported
<b>VPN</b>	
<b>VPN Function</b>	IPSec (Host to Host)/GRE/PPTP server/L2TP/SSL (Open VPN)
<b>VPN Tunnels</b>	Max. 60
<b>VPN Throughput</b>	Max. 60Mbps
<b>Encryption Methods</b>	DES, 3DES, AES or AES-128/192/256 encrypting
<b>Authentication Methods</b>	MD5/SHA-1/SHA-256/SHA-384/SHA-512 authentication algorithm
<b>Standards Conformance</b>	
<b>Regulatory Compliance</b>	CE, FCC
<b>Environment Specifications</b>	
<b>Operating</b>	Temperature: 0 ~ 50 degrees C Relative Humidity: 5 ~ 95% (non-condensing)
<b>Storage</b>	Temperature: -10 ~ 60 degrees C Relative Humidity: 5 ~ 95% (non-condensing)
<b>Standard Accessories</b>	
<b>Packet Contents</b>	VR-100 x 1 Quick Installation Guide x 1 Power Cord x 1 Feet Pads x 4

### 3.3 Physical Specifications

<b>Dimensions (W x D x H)</b>	215.2 x 135 x 42.6 mm
<b>Net weight</b>	0.85 kg

#### Front View



<b>LED</b>		
<b>PWR</b>	<b>Green</b>	Lights up when the power is on.
<b>Internet</b>	<b>Green</b>	Lights up when the router connects to internet successfully.
<b>Port 1-5</b>	<b>Green</b>	“Steady on” indicates the port is connected to other network device. “Blink” to indicate there is traffic on the port.
<b>Ports</b>		
<b>USB Port</b>		USB 3.0 port for system configuration backup and restoration.
<b>Reset Button</b>		Power on the device and press the reset button for ten seconds to restore it to factory default settings.
<b>Port 1-3</b>		It is a LAN port for connecting to a switch.
<b>Port 4</b>		Default is LAN port. It can be defined as LAN port or WAN port.
<b>Port 5</b>		It is a WAN port for connecting to a perimeter router.



## Rear View



## 3.4 Environmental Specifications

### Operating

Temperature	0 ~ 50°C
Relative Humidity	5 ~ 95% (non-condensing)

### Storage

Temperature	-10 ~ 60°C
Relative Humidity	5~95% (non-condensing)

## 3.5 Power Specifications

Power Requirement	100-240V AC, 1A
Power Consumption	Maximum 13 watts

## 3.6 Regulatory Compliance

FCC, CE

## 3.7 Reliability

MTBF > 50000 hrs @ 40 degrees C

## 3.8 Basic Packaging

- VR-100 x 1
- Quick Installation Guide x 1
- Power Cord x 1
- Feet Pads x 4

### 3.9 Packaging Information

<b>Dimensions (W x D x H)</b>	290 x 243 x 76 mm
<b>Weight</b>	1.3 kg (gross weight)
<b>Carton Dimensions (W x D x H)</b>	424 x 324 x 296 mm
<b>Carton Weight</b>	6.5 kg
<b>Carton Unit</b>	5pcs in one carton