

Wired / Wireless / POE IP Camera

ICA-107 / ICA-107W / ICA-107P

ICA-M220 / ICA-M220W

Quick Installation Guide

Table of Contents

Chapter 1. Introduction	3
1.1 Before Installation	3
Chapter 2. ICA-107 Series–CMOS IP Camera	4
2.1 Package Content	4
2.2 Outlook	4
2.2.1 Front View	4
2.2.2 Button View	6
2.3 Physical Installation	7
2.4 IP Camera Admin Software	7
Chapter 3. Mega-Pixel CMOS PT IP Camera	13
3.1 ICA-M220 Mega-Pixel CMOS PT IP Camera	13
3.1.1 Package Content	13
3.2. ICA-M220W 11n Mega-Pixel CMOS PT IP Camera	13
3.2.1 Package Content	13
3.3 Front Panel	14
3.4 Rear Panel	15
3.6 Physical Installation	16
3.7 Initial Utility Installation	18
3.8 Camera Admin locate PT Internet Camera	22
Chapter 4. Cam Viewer Plus Installation	24
Appendix A: Feature Listing for Cam Viewer Plus	29
Appendix B: Suggest Hardware / System Requirement	30
Ordering Information for Cam Viewer Plus Pro	31
Further Configuration	31

Chapter 1. Introduction

Thank you for purchasing the IP surveillance product. It is versatile and high image solution of the perfect surveillance application. The IP surveillance state-of-art design is considerable to fit in various network environments.

1.1 Before Installation

Before installation, please be sure to read this quick installation guide and user's manual (CD) carefully to complete machine installation.

This QIG includes the following chapter:

- Chapter 2. ICA-107 Series – CMOS IP Camera
- Chapter 3. ICA-M220/M220W – Mega-Pixel CMOS PT IP Camera
- Chapter 4. Cam Viewer Plus Installation
- Appendix A: Feature Listing for Cam Viewer Plus
- Appendix B: Suggest Hardware / System Requirement

Chapter 2. ICA-107 Series –CMOS IP Camera

2.1 Package Content

CMOS IP Camera x 1

Power Adapter x 1

Camera Stand x 1

Network Cable x 1

Antenna x 1 (ICA-107W only)

CD Disk x 1

Quick Installation Guide x 1



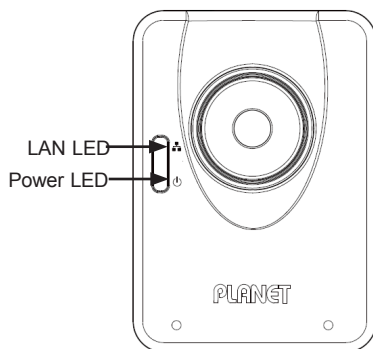
Note

1. If any of the above items are missing, please contact your dealer immediately.
2. Using a power supply with a different voltage than the one included with the package will cause damage and void the warranty.

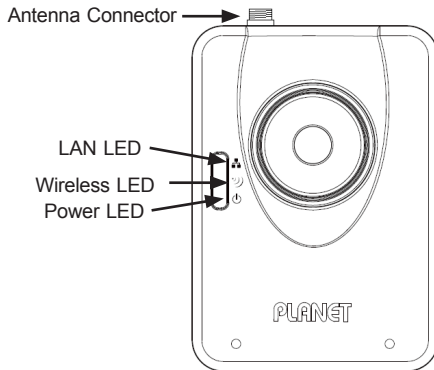
2.2 Outlook

2.2.1 Front View

ICA-107 & ICA-107P

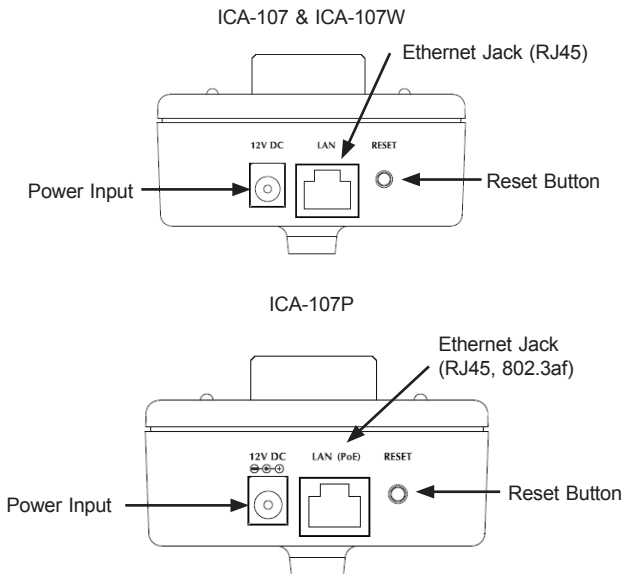


ICA-107W



LED	Description
LAN LED	When the Internet Camera is linking to wired network, the LED is lighting. The LED is flashing when video is transmitted or received through wired network.
Power LED	When the camera is power on, the LED will light.
Wireless LED (ICA-107W only)	When the Internet Camera is linking to wireless network, the LED is lighting. The LED is flashing when video is transmitted or received through wireless network.

2.2.2 Button View



PORT	Description
12V DC	Connect to the supplied power adapter. If ICA-107P is obtained power from PoE, you don't have to attach the power adapter.
LAN	Connect your camera to a 10/100Base-TX hub or switch.
LAN (PoE) (Model: ICA-107P)	Connect your camera to a 10/100Base-TX hub or switch. This port compliant with IEEE 802.3af PoE PD (powered device). Either mid-span PSE or end-span PSE supported.
RESET	Reset to manufacturer default valued. When pressed and held over 5 seconds, the settings will be set to the default values.

2.3 Physical Installation

1. Connect an Ethernet cable

Connect one end of an Ethernet cable to the LAN port located on the IP Camera bottom panel and attach the other end to the network device (hub or switch).

2. Attach the external power supply

Connect the provided power adapter to the IP Camera's connector labeled "12V DC" on the bottom panel.



Note

1. Please use the power adapter that is bundled in the package. Using a power supply with a different voltage rating will damage and void the warranty for this product.
2. For ICA-107P, either powered from AC adapter, or from PoE is allowed.

3. Check the LEDs

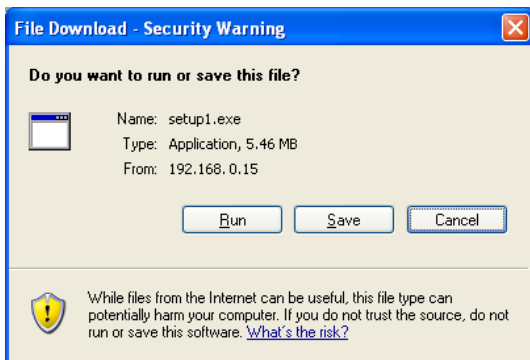
The power LED should be on.

2.4 IP Camera Admin Software

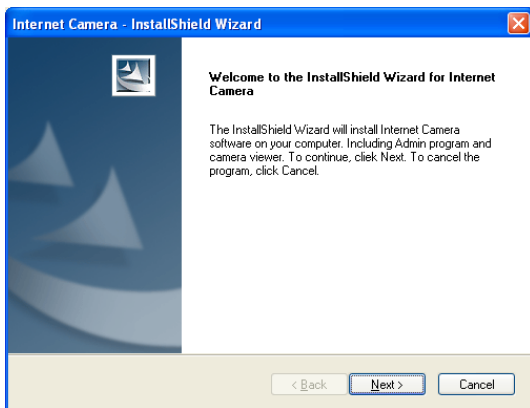
Follow the steps below to install the initial utility. The following installation is implemented in Windows XP and the installation procedure is similar to Windows 2000.

1. Insert the bundle CD disk into your CD-ROM drive. A welcome web page should open with your default browser. If not, please double click on the "default.htm" in the CD.
2. Please click the IP Camera model name.
3. Click on the hyperlink "IP Camera initial utility".

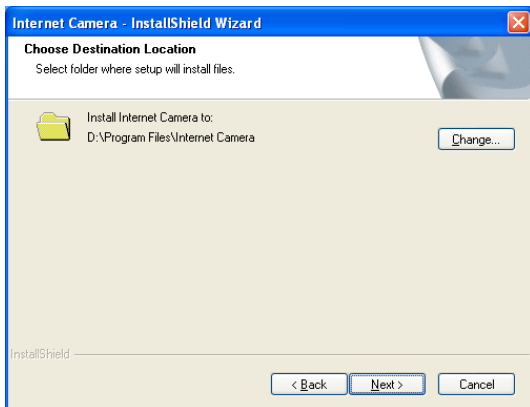
4. After clicking on the “Install IP Camera Configure Utility” hyperlink, you may see a dialog box to prompt you to download the installation program. Click on the “Run” button, the installation program should be started.



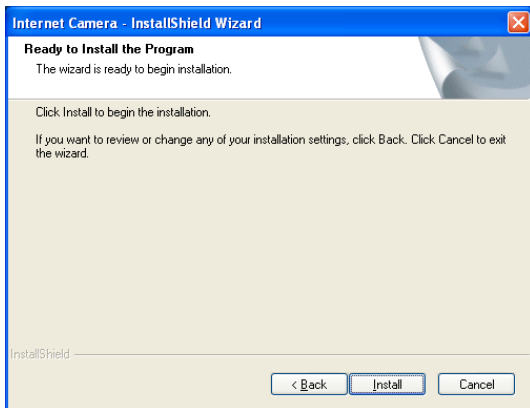
5. Click “Next” to start the installation.



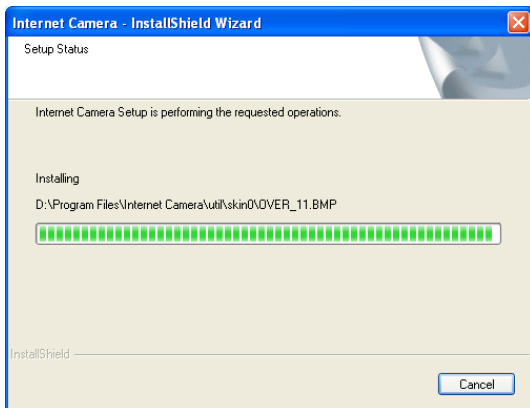
6. Click on the "Change" button to choose the destination you wished to install the utility. If no specific requirement, leave the default setting and click "Next".



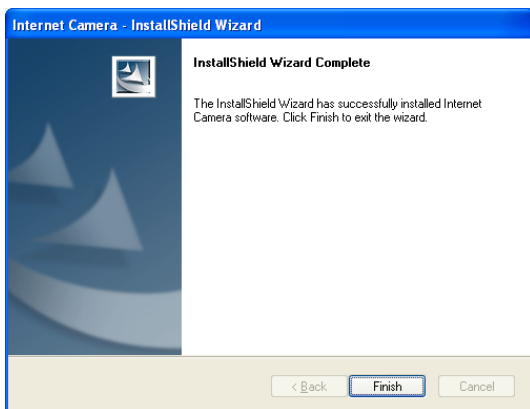
7. Click "Install" to start installing the utility.



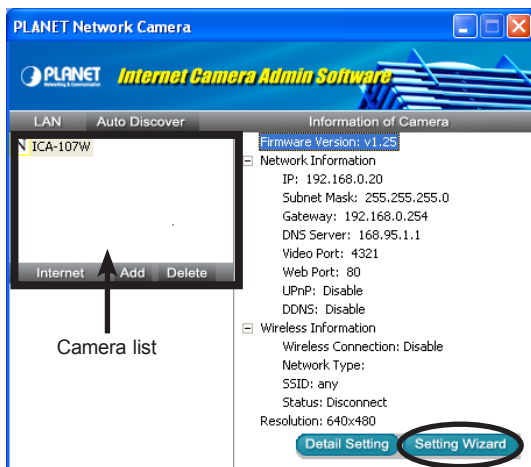
8. The system will install the program automatically.



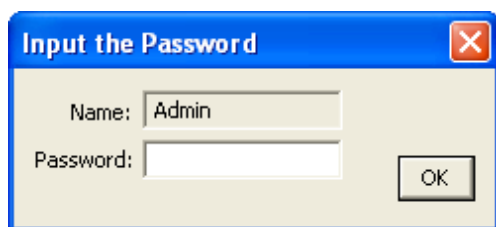
9. Click "Finish" to complete the software installation.



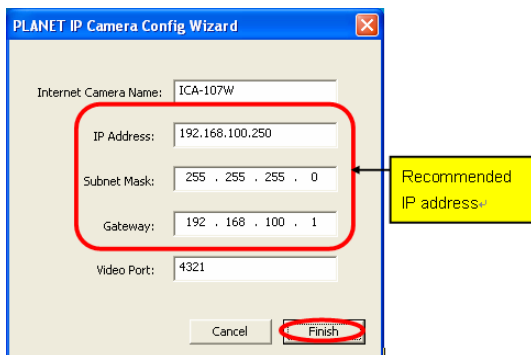
10. After the installation, IP Camera Admin will launch automatically. It will start to search the IP Cameras in your intranet and it will list all the available ICA-107 series on the camera list. Choose the one that you would like to configure and click "Setting Wizard" to processed.



11. Please enter the default password "Admin" and click "OK" to login to the IP Camera's setup page.



12. For IP Camera work, you may assign a new IP address to your IP Camera. The utility will try to find an available IP address and recommend you using that address. You could use the recommend IP address or input the IP address manually. Please be aware that the IP address of the IP Camera and your PC should be in the same subnet. Click "Finish" to apply the configuration.



13. After modifications, you may now connect the IP Camera via web browser.

Chapter 3. Mega-Pixel CMOS PT IP Camera

3.1 ICA-M220 Mega-Pixel CMOS PT IP Camera

3.1.1 Package Content

IP Camera x 1

Power Adapter x 1

Quick Installation Guide x 1

User's Manual CD x 1

RJ-45 Cable x 1

Mounting Kit x 1



Note

1. if any of the above items are missing, please contact your dealer immediately.
2. Using a power supply with a different voltage than the one included with the package will cause damage and void the warranty.

3.2. ICA-M220W 11n Mega-Pixel CMOS PT IP Camera

3.2.1 Package Content

ICA-M220W x 1

Power Adapter x 1

Quick Installation Guide x 1

User's Manual CD x 1

RJ-45 Cable x 1

Mounting Kit x 1

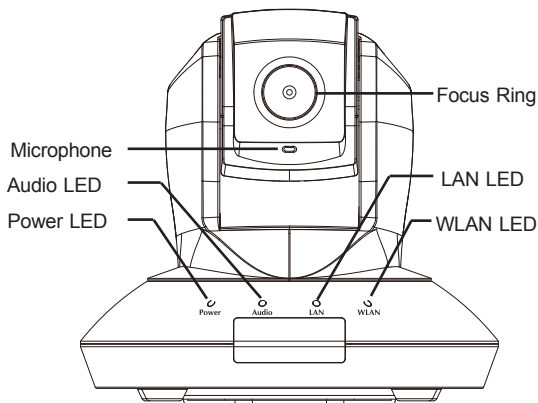
Antenna x 2



Note

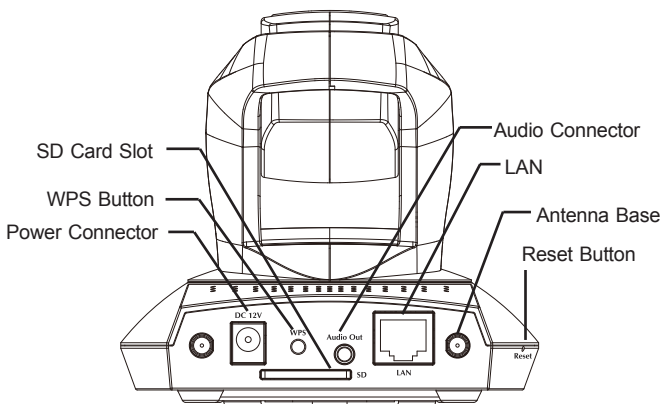
1. if any of the above items are missing, please contact your dealer immediately.
2. Using a power supply with a different voltage than the one included with the package will cause damage and void the warranty.

3.3 Front Panel



Indicators	Description
Focus Ring	User could use this ring to adjust focus manually.
LAN LED	The LED indicates LAN activity. It be flashing while network accessing via Ethernet.
WLAN LED (ICA-M220W only)	The LED indicates the wireless accessing of the PT Internet Camera. Light be flashing while transferring via wireless LAN. If be flashing at low speed once a second indicated that waiting for WPS connection form AP.
Microphone	The Camera has built-in an internal microphone. This microphone is hidden in the pinhole located on the front panel.
Audio LED	The LED indicates the audio activity, when it is flashing while speak function enable, if volume adjust to 0 the function will be disable.
Power LED	The LED is used to indicate DC power status.

3.4 Rear Panel



Connectors	Description
Audio Connector	Audio-Out allows device to output audio or alerting sound.
LAN	This is a RJ-45 connector for connections to 10/100 Base-TX Ethernet cabling and built N-Way protocol can detect or negotiate the transmission speed of the network automatically.
Reset Button	Press the button with pen nib and hold for 5 seconds to reset the camera settings to factory default value.
SD Card Slot	Accepts SD / SD-HC memory card for image / video storage
Antenna Base (ICA-M220W only)	Allows device connects to the supplied antenna.
WPS Button (ICA-M220W only)	Press the button on IP Cam and press it on the AP you want to connect for wireless.
Power Connector	The input power is 12VDC, 1A. Only use the power adapter supplied with PT Internet Camera, otherwise the product may be damaged.

3.6 Physical Installation

Please follow the following instructions to set your IP camera up.

1. Unpack the product package and check if anything's missing.
2. Connect the Ethernet cable to your local area network, and connect the other end to the LAN jack of this IP camera.



Note

User can skip this step if you plan to use wireless LAN only



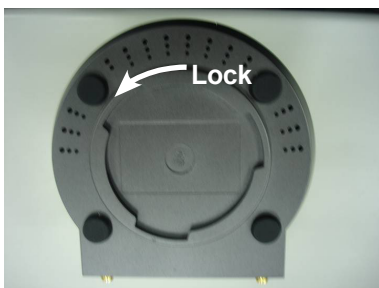
Plug the power adapter to wall socket, and connect the power connector to the power jack located at the bottom of the IP camera,



-
3. (ICA-M220W only) Connect two antennas to the antenna bases, which is located at the back of the PT Internet Camera.



4. Place the camera at a secure place, and point the camera to the place you wish to monitor. If you wish to hang the camera on the ceiling or wall, please use the tripod connector (located at the bottom of the camera) to secure the camera.



Launch Internet Explorer on your computer, and following the instructions given in next section to set the PT Internet Camera.

3.7 Initial Utility Installation

This section shows how to quick set up your PT Internet Camera. The Camera is with the default settings. However to help you find the networked camera quickly the admin software can search the cameras in the network that shall help you to configure some basic setting before you started advanced management and monitoring.

Initial setup should be performed by using the supplied Windows-based Setup Tool as follows:

Then follow the following instructions to install and use camera admin software:

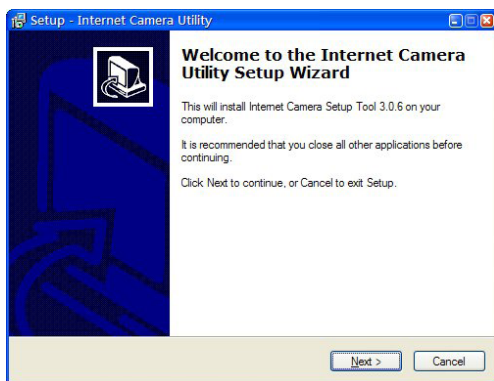
1. Insert the bundled product CD into CD-ROM drive to launch the autorun program.
2. Please click the IP camera model name.
3. When the web page displayed, select and click the **“Initial Utility”** hyperlink on the menu to start the installation process.



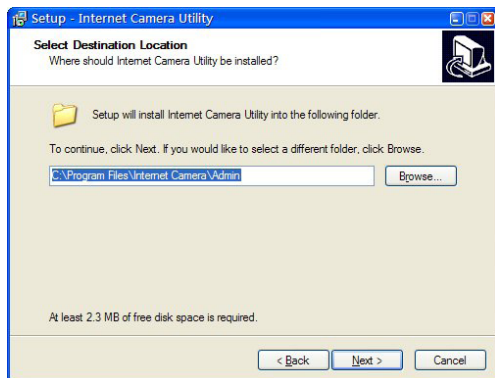
Note

If the CD's menu does not appear, click "Start" on the task bar and select "Run" to type "X:\Utility\InitialUtility**Setup_ICA-M220_x.x.x.EXE**", assume X is your CD-ROM drive.

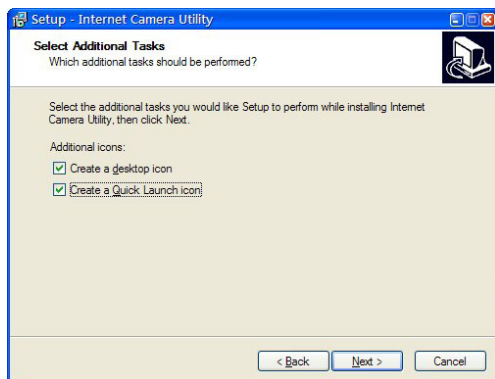
4. Click **Next** to start install camera admin software:



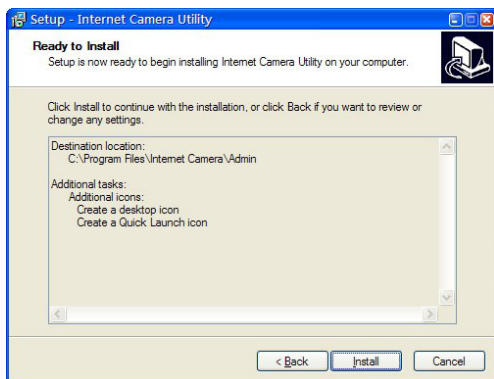
5. You can change the installation folder of camera setup software here, click **Browse** to select an existing folder, or you can just click **Next** to use default installation folder:



6. If you wish to create desktop icon and / or quick launch icon for camera admin software, please check corresponding box, and click **Next** to continue.



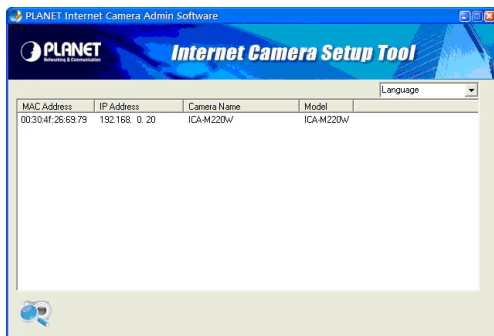
7. You'll see a brief of all options you selected, click **Install** to **install** camera admin software now, or click back to **back** to previous steps to change settings.



8. When you see this message, the installation of camera admin software is complete. If you wish to launch camera admin software now, keep **Launch IP Cam Admin Utility** box checked, and click **Finish** to close installation utility.

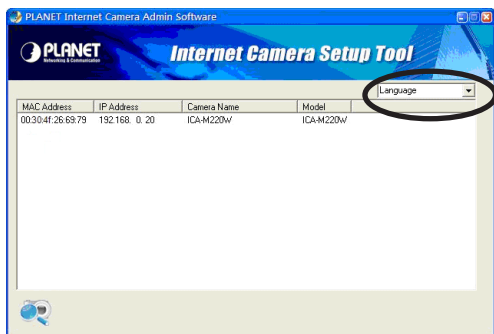





9. Please double-click the utility icon on the desktop then you will see the PT Internet Camera utility. After the camera admin software is launched, all cameras found on your local area network will be displayed:



All camera-related information will be displayed here. If you wish to connect to certain camera by web browser, double-click the camera listed here.

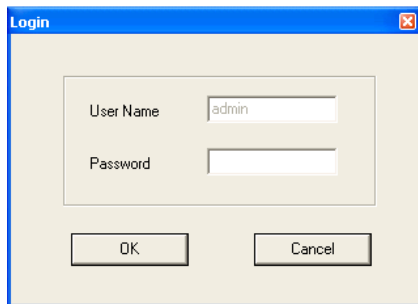
The camera admin software also provides several functions:



Options	Description
Language	This camera admin software supports 3 languages: English, Chinese, and Japanese. User can select the language oneself wish to use from language dropdown menu located at upper-right corner of camera admin software.
	Search camera: Click this button to search all cameras on local area network again.
	Browse camera via web: Select a camera listed above first, and then click this button to connect to the camera by web browser.
	Configure camera: Click this button to configure camera's network and security setting. You'll be prompted to input camera's password:

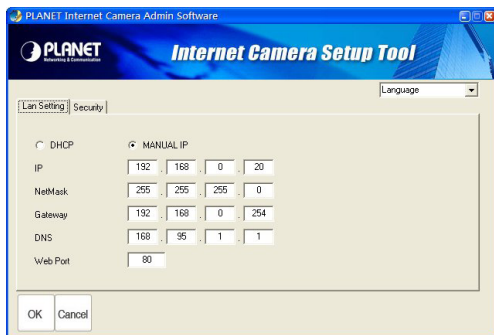
3.8 Camera Admin locate PT Internet Camera

If you can't connect to the camera by the instructions given in last chapter, you can use camera admin software to search the camera which is connected to your local area network. The admin software is also capable to locate multiple cameras on your local area network.



The screenshot shows a standard Windows-style dialog box titled "Login". It features a blue title bar with a close button in the top right corner. The main area is light gray and contains two input fields. The first field is labeled "User Name" and contains the text "admin". The second field is labeled "Password" and is currently empty. Below the input fields are two buttons: "OK" and "Cancel".

Input the password (default: **admin**) and click **OK** to configure the camera's network and security setting:



In **Lan Setting** page, user can configure camera's network settings. Select DHCP to set the camera to obtain an IP address from **DHCP** server on local area network automatically, and select **Manual IP** to input the IP address information manually. Click **OK** to save settings.

In **Security** page, user can change the camera's name and password (user name is always 'admin' and cannot be changed). You have to input the same password in both **New Password** and **Confirm Password** field, or you'll be prompted to input new password again. Click **OK** to save settings or click **Cancel** to discard changes.



Chapter 4. Cam Viewer Plus Installation



Note

1. There are two software in this CD-ROM, one is Cam Viewer Plus Lite and the other is Cam Viewer Plus Pro 30 days trial version. The installations below is based on Cam Viewer Plus Lite version and the Cam Viewer Plus Pro 30 days trial version installation steps are similar to Lite version.
2. For the first time installation, Cam Viewer Plus Lite is suggested. And please refer to Appendix for the difference of the two softwares.

Insert the bundled CD disk into the CD-ROM drive to launch the autorun program. Once completed, a welcome menu screen will appear. Click the "Cam Viewer Plus" hyperlink, the below InstallShield Wizard dialog box will appear.

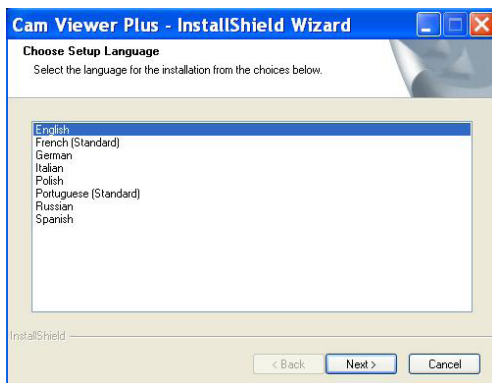


Note

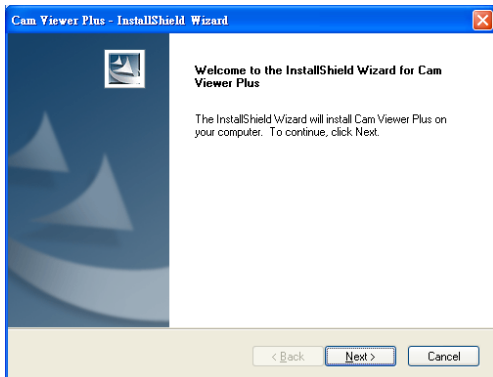
If the welcome screen does not appear, click "Start" at the taskbar. Then, select "Run" and type "D:\Utility\Cam Viewer Plus\setup.exe", assume "D" is your CD-ROM drive

Simply place the setup disc into your optical drive and wait for seconds, you will see welcome web page, please click the Cam Viewer Plus to start the installation.

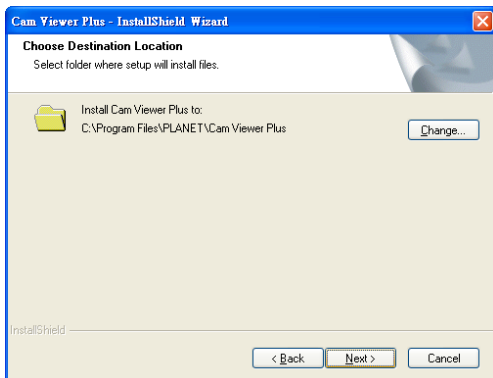
Select the language once the "Choose Setup Language" Windows pop-up, and then click "Next" to continue the installation.



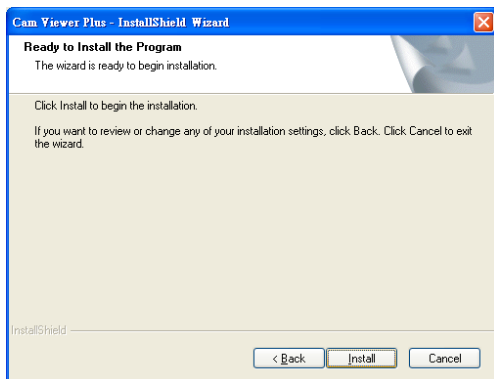
The “Welcome” window will then pop-up, click on “Next” to continue.



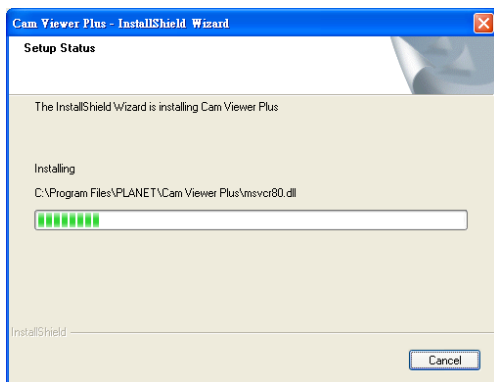
You may choose where to install the program. Click on “Change” button to browse your computer. Once you have specified the directory, click on “Next” to continue.



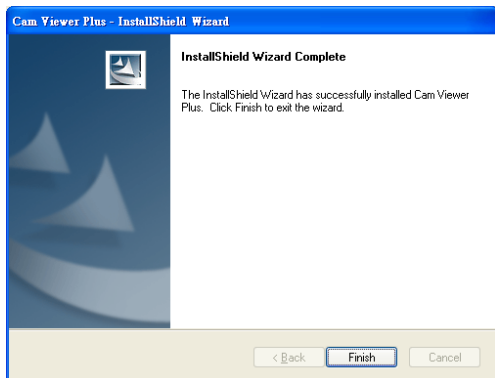
You are now ready to install the program. Click on “Install” to begin the installation process.



You will now see the installation progress. Please wait a few minutes to complete the installation.



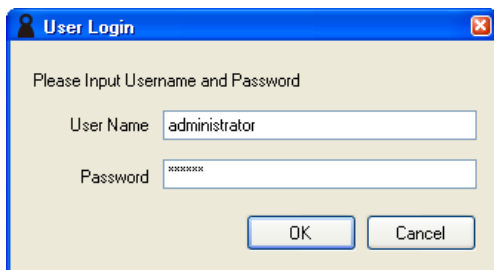
Click on “Finish” to exit the InstallShield wizard.



You will now be prompted to create an administrator account. This account allows full control of Cam Viewer Plus Pro. Enter a password for this administrator account in the “Password” field and re-enter it in “Password Confirm” field.



You will then be prompted to login by the administrator user name and password. Enter "administrator" in the "User Name" field. Enter the password you just created in the "Password" field.



You have successfully entered Cam Viewer Plus.



Appendix A: Feature Listing for Cam Viewer Plus

Specification	Description	Cam Viewer Plus Pro	Cam Viewer Plus
Live view channel	Max. channels monitored simultaneously	Up to 64 channels	Up to 64 channels
E-Map	Showing camera's location and map background	V	N/A
Remote Server	Provide remote server, support remote live view	V	N/A
Counting Function	Provide counting function	V	N/A
Compression format	H.264/MPEG4/MJPEG	V	V
Open by Event	Opens recorded video files by event type Event options: - General Motion Detection - Focal Loss Detection - Missing Object Detection - Foreign Object Detection - Obstruction Detection - Camera Tampering Detection	All	General Motion Detection / Camera Signal Lost
Smart Search	Searches archives by event on specific area(s) on video - General Motion Detection - Missing Object Detection - Foreign Object Detection - Focal Loss Detection - Obstruction Detection - Camera Tampering Detection	All	General Motion Detection / Camera Signal Lost
Intelligent Guard	Options: - General Motion - Focal Loss - Missing Object - Foreign Object - Obstruction - Camera Tampering - Camera Signal Loss	All	General Motion Detection / Camera Signal Lost
SMS Alarm	Send a SMS to mobile phone.	V	N/A
Preset Go	Control PZ camera to a specify location.	V	N/A

Appendix B: Suggest Hardware / System Requirement

The Minimum system requirement

CPU	Intel® Pentium 4 3.0GHz with Hyper-threading
RAM	1 GB
Video RAM	128MB
Display Chip	nVIDIA GeForce 8500GT ATI Radeon HD 4350
Display Resolution	1024X768 24bits
Operating System	Windows2000 SP4 / Windows XP Pro SP2 /Windows 2003 /Vista
DirectX	9.0c
Required space for installation	100MB
Recommended HD free space	160 GB
Network	Ethernet 100Base-TX

Recommended for 16 Channels on CIF resolution

CPU	Intel® Core™2 Duo E7400
RAM	2 GB
Video RAM	256 MB
Display Chip	nVIDIA GeForce 8600GT ATI Radeon HD 4670
Recommended HD free space	160GB or above
Network	Ethernet 100Base-TX or above

Recommended for 64 Channels on CIF resolution

CPU	Intel® Core™2 Quad Q8200
RAM	4 GB

Video RAM	1 GB
Display Chip	nVIDIA GeForce 9500GT ATI Radeon HD 4850
Recommended HD free space	500GB or above
Network	Ethernet Gigabit LAN or above

Ordering Information for Cam Viewer Plus Pro

Model	Description
CVPP-4	4-Channel Cam Viewer Plus Pro
CVPP-9	9-Channel Cam Viewer Plus Pro
CVPP-16	16-Channel Cam Viewer Plus Pro
CVPP-25	25-Channel Cam Viewer Plus Pro
CVPP-36	36-Channel Cam Viewer Plus Pro
CVPP-49	49-Channel Cam Viewer Plus Pro
CVPP-64	64-Channel Cam Viewer Plus Pro

Further Configuration

If you want to configure more detail settings of ICA-107, ICA-M220W and ICA-M220, please refer to the user manual in the CD disk.

This page is intentionally left blank