

16/24-Port 10/100Mbps Desktop Fast Ethernet Switch



High-Speed 10/100Mbps Workgroup Switch

The PLANET FSD-1605/FSD-2405 is a 10/100Mbps Fast Ethernet Switch with 16/24 ports which are respectively cost-effective. The Fast Ethernet Switch can boost bandwidth, eliminate unnecessary traffic, and relieve congestion to critical servers. The Fast Ethernet Switch has 8K MAC Address table and provides 3.2/4.8Gbps switching capacity, and it also offers wire-speed packets transfer performance without risk of packet loss. Therefore, the Switches will be recognized quickly as one of the most important building blocks for networking technology today.

Flexible Size Design – Desktop and Rack-mountable

With concepts of "Easy to Install and use", "Compact sized design", and "Simple troubleshooting", PLANET FSD-1605/2405 provides cost-conscious business and home users with the foundation from an integrated system of small-office / home-office networking. The Compact-size design makes the Desktop Switch fit into space-limited environment. With included rack brackets, the PLANET FSD-1605/2405 is also rack-mountable for 19-inch cabinet.

Plug and Play

All RJ-45 copper interfaces support 10/100Mbps Auto-Negotiation for optimal speed detection through RJ-45 Category 5 or 3 cables. Supporting standard for Auto-MDI/MDI-X can detect the type of connection to any Ethernet device without requiring special straight or crossover cables. The Flow Control function allows that Fast Ethernet Switches support routers and servers for directly connecting to this Switch with fast and reliable data transfer.

KEY FEATURE

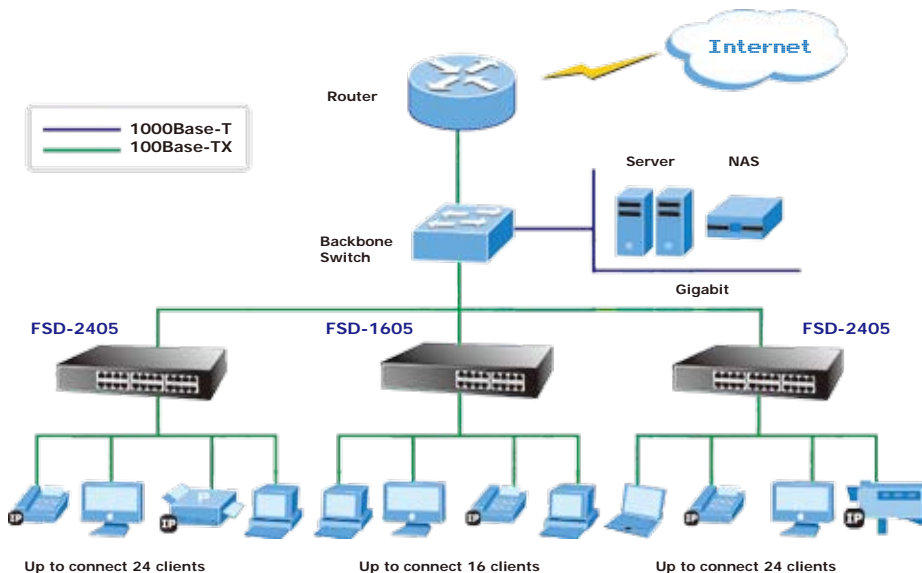
- 16/24-Port 10/100Mbps TP interfaces
- Complies with IEEE 802.3, 10Base-T, IEEE 802.3u, 100Base-TX
- IEEE 802.3x flow control for full duplex operation and Back pressure for half duplex operation
- Features Store-and-Forward mode with wire-speed filtering and forwarding rates
- Supports 8K absolute MAC addresses
- Supports to handle up to 1552 bytes packet
- Automatic address learning and address aging
- Supports Auto-MDI/MDI-X function
- Full/Half-Duplex capability on each TX port
- Plug-and-Play installation
- Compact size, rack-mountable
- LED indicators for simple diagnostics and management
- FCC, CE class A compliant

SPECIFICATION

Product	16-Port 10/100Mbps Fast Ethernet Desktop Switch	24-Port 10/100Mbps Fast Ethernet Desktop Switch
Model	FSD-1605	FSD-2405
Hardware Specification		
Network Connector	16-Port RJ-45 for 10/100Base-TX	24-Port RJ-45 for 10/100Base-TX
Switch Fabric	3.2Gbps	4.8Gbps
Switch Throughput	2.38Mpps	3.57Mpps
MAC Address	8K MAC address table with Auto learning function	
Shared Buffer	1.25Mbits	
Power Requirement	100~240V AC, 50/60Hz,	
Operating Environment	0~50 Degree C, 5%~90%RH	
Storage Environment	-40~70 Degree C, 5%~90%RH	
Dimension (W x D x H)	280 x 170 x 44 mm, 1 U height, rack mount	
Switch Specification		
Switch Architecture	Store-and-Forward	
Flow Control	IEEE 802.3x full duplex operating and flow control	
Packet Control	Runt & CRC filtering, Broadcast storm control	
Standard Compliance		
Network Standard	IEEE 802.3 10Base-T IEEE 802.3u 100Base-TX IEEE 802.3x Flow Control and Back pressure	
EMI	FCC Class A, CE	

APPLICATIONS
SOHO/Workgroup Switch

With 16/24 10/100Mbps ports, the Fast Ethernet Switch provides a cost-effective and high-performance solution for SOHO/SMB workgroup. To segment the network and ease the network traffic, the Fast Ethernet Switch is useful for SOHO switched networks as the friendly network backbone. Because of providing array LED indicators, the network status can be monitored at a glance.


ORDERING INFORMATION

FSD-1605	16-Port 10/100Mbps Fast Ethernet Desktop Switch
FSD-2405	24-Port 10/100Mbps Fast Ethernet Desktop Switch