

8-Port 10/100/1000Mbps Web Smart Gigabit Ethernet Switch



3rd Generation of PLANET Desktop Web Smart Gigabit Switch

The GSD-800S is an 8-Port 10/100/1000Mbps Web Smart Gigabit Ethernet Switch, utilizing a compact form factor which can be mounted in a 10/19-inch rack with optional rack-mounting kits, or placed on desktop. Compared with previous version, the enhanced software features as below:

- 802.1Q VLAN
- 802.1X Authentication / RADIUS
- Rapid Spanning Tree
- SNMP monitor and SNMP Trap
- IGMP Snooping

High Gigabit Performance / Wire-Speed Switching

With 16Gbps non-blocking switch fabric, 8k MAC Address table and 802.3x Full-Duplex flow control, the GSD-800S offers wire-speed packet transfer performance without risk of packet loss.

Friendly / Simple Web Management Interface

For efficient management, with its built-in Web-based management, the GSD-800S offers an easy-to-use and configuration facility. Via the WEB interface, the GSD-800S can be programmed for basic Switch management functions such as per port speed duplex settings, Port Trunking, VLAN, Port Mirroring, Rapid Spanning Tree, 802.1X network security authentication and Misc Configuration. Additionally, the firmware includes advanced features such as IGMP snooping, QoS (Quality of Service), broadcast storm and bandwidth control, to enhance bandwidth utilization.

Remote and Centralize Management installation

Affording the current network to grow and expand, the GSD-800S supports standard Simple Network Management Protocol (SNMP) and can be monitored via any standard-based management software. These features provide a cost-effective way to manage the device from the Internet whenever you are at work or at home.

Easy Cabling installation

All eight RJ-45 copper interfaces support 10/100/1000Mbps auto-negotiation for optimal speed detection through RJ-45 Category 6, 5 or 5e cables. The MDI/MDI-X auto detection supports wired connection to any Ethernet device without requiring cross-over cables.

KEY FEATURE

Generic Features

- Complies with IEEE 802.3 10Base-T, IEEE 802.3u 100Base-TX, IEEE 802.3ab 1000Base-T, Ethernet standard
- 8-Port 10/100/1000Mbps Gigabit Ethernet ports
- Each Switching ports supports auto-negotiation-10/20, 100/200 and 1000/2000Mbps supported
- Auto-MDI/MDI-X detection on each RJ-45 port, supports CSMA/CD protocol
- Prevents packet loss with back pressure (Half-Duplex) and 802.3x PAUSE frame flow control (Full-Duplex)
- 8K MAC address table, automatic source address learning and ageing
- 16Gbps switch fabric, non-blocking switch architecture
- 9K Jumbo Frame supports at all speed (10/100/1000Mbps)

Layer-2 Switching

- Supports Port-Based and 802.1Q VLAN function, up to 64 VLAN groups
- 802.1w Rapid-Spanning Tree protocol support
- Link Aggregation supports static mode and LACP (802.3ad) - up to 4 Trunk groups, each trunk for up to maximum 8 ports

Multicast

- IGMP Snooping for multicast filtering, supports v1 and v2
- IGMP Query Mode supports for multimedia application

Quality of Service

- 4 QoS classes per port
- Traffic class assignment based on 802.1p tag, or DSCP field
- Multicast and Broadcast Storm Control as well as Flooding Control
- Ingress Rate Limit and Egress Shaping for bandwidth control in steps of 128kbps

Security

- Port Mirroring support for dedicated port monitoring
- 802.1X Port-Base access control, RADIUS ServerAuthentication
- Static MAC Address assigns destination MAC address at specifies port.

Management

- Remote Web management interface
- Firmware upgrade through Web interface
- Cable Diagnostics technology
- Supports SNMPv1 with RFC-1213/1573-Interface group and RMON Group 1 (Statistics)
- SNMP Trap
- Supports PLANET EASY-DISCOVERY Utility for deploy management

SPECIFICATION

Product **8-Port 10/100/1000Mbps Web Smart Gigabit Switch**

Model **GSD-800S**

Hardware Specification

Copper Ports	8 10/100/1000Base-T RJ-45 Auto-MDI/MDI-X ports
SFP/mini-GBIC Slots	N/A
Switch Architecture	Store-and-Forward
Switch Fabric	16Gbps / Non-blocking
Switch Throughput	11.9Mpps
Address Table	8K MAC address table with Auto learning function
Share Data Buffer	176K bytes on chip
Flow Control	Back pressure for Half-Duplex, IEEE 802.3x Pause Frame for Full-Duplex
Jumbo Frame	9K Bytes
LED	Power, 1000 Link/Act, 10/100 Link/Act per port
Dimensions	217mm x 135mm x 43.5mm (W x D x H)
Weight	1.1kg
Power Requirement	100 - 240VAC, 50 – 60Hz, Auto-sensing
Power Consumption	8.7 watts / 27.31 BTU
Temperature	0~50°C
Humidity Operating	5~95%(non-condensing)

Layer 2 Function

Management Interface	Web Browser, SNMPv1, v2c monitor and SNMP Trap
Port Configuration	Port disable/enable. Auto-negotiation 10/100/1000Mbps full and half duplex mode selection Flow Control disable / enable Bandwidth control on each port
VLAN	Port-Based / 802.1Q Tagged Based VLAN, Up to 64 VLAN groups
Link Aggregation	Supports 4 groups of 8-Port trunk, IEEE 802.3ad LACP
QoS	Traffic classification based on 802.1p priority, DSCP field in IP Packet
IGMP Snooping	IGMP (v1/v2) Snooping, up to 64 multicast Groups
SNMP MIBs	RFC-1213 MIB-2 RFC-1573-Interface MIB RFC-2819 RMON MIB (Group 1)

Standards Conformance

Regulation Compliance	FCC Part 15 Class A, CE
Standards Compliance	IEEE 802.3 10Base-T IEEE 802.3u 100Base-TX IEEE 802.3ab Gigabit 1000Base-T IEEE 802.3x Flow Control IEEE 802.3ad Port trunk with LACP IEEE 802.1d Spanning tree protocol IEEE 802.1w Rapid spanning tree protocol IEEE 802.1p Class of service IEEE 802.1Q VLAN Tagging IEEE 802.1x Port Authentication Network Control
Network Media	10Base-T – UTP/STP category 3, 4 or 5 cable 100Base-TX – UTP/STP category 5 cable 1000Base-T – UTP/STP category 5e/6 cable

* The specification is for GSD-800S hardware version 3 only

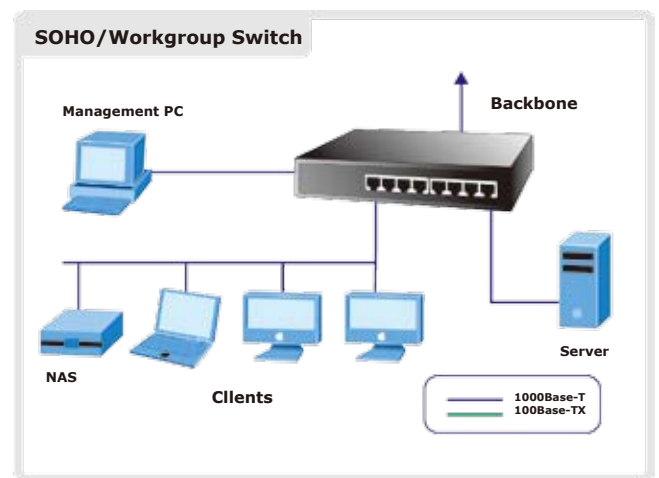
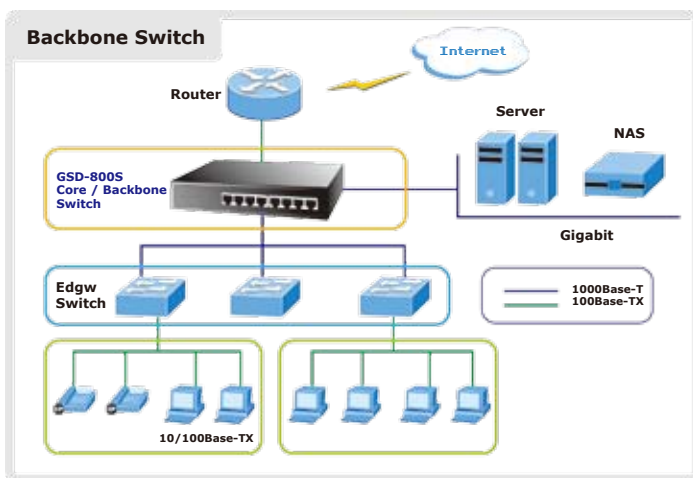
APPLICATIONS

Backbone Switch

With a non-blocking design and desktop size, the PLANET's GSD-800S 8-Port Gigabit Ethernet Switch are as easy as install a Fast Ethernet network, and it can be used to build up a Gigabit high-bandwidth switched network up quickly and easily. With supporting for VLAN and port trunking on the GSD-800S, users can directly connect to department switches or backbone servers.

SOHO/Workgroup/Department Switch

With 8 10/100/1000Mbps ports, the GSD-800S provides a cost-effective and high-performance solution for SOHO/SMB Departments and power users. In multiple applications, the advanced functionality of the GSD-800S eliminates traditional problems associated with Ethernet. Using the built-in VLAN functionality can segregate users and Spanning tree can reduce the loop occur.



ORDERING INFORMATION

GSD-800S	8-Port 10/100/1000Mbps Web Smart Gigabit Ethernet Switch
RKE-10A	Rack Mount Kits for 10" cabinet
RKE-10B	Rack Mount Kits for 19" cabinet

RELATIVE PRODUCT

GSD-802S	8-Port 10/100/1000Mbps with 2 shared SFP Web Smart Gigabit Switch
GSD-802PS	8-Port 10/100/1000Mbps with 2 shared SFP Web Smart PoE Switch