

VPN Security Gateway



The New model of Planet's VPN Security Gateway SG-500, a special designed of VPN security gateway, provides SSL and IPsec VPN. The SSL VPN function supports up to 5 SSL VPN connection tunnels. The IPsec VPN feature provides IKE, SHA-1, and MD5 Authentication. It is specifically designed for SOHO networks.

The SG-500 provides Content Blocking feature to block specific URL, Script, IM, P2P, and download file. Also, it has built-in Anomaly Flow IP function. This function supports Hackers and Blaster Alerts. An administrator could use this function to watch and track an attacker. Also, the QoS function provides Guaranteed Bandwidth and Priority Bandwidth Utilization.

Both the NAT mode and DMZ mode are supported and they can maintain the existing network infrastructure without reconfiguring. The SG-500 provides policy-based firewall protection and several hacker protections to prevent hackers' attack. Besides, the comprehensive alarm and log function allow the network managers to enhance the security of local network easily.

KEY FEATURE

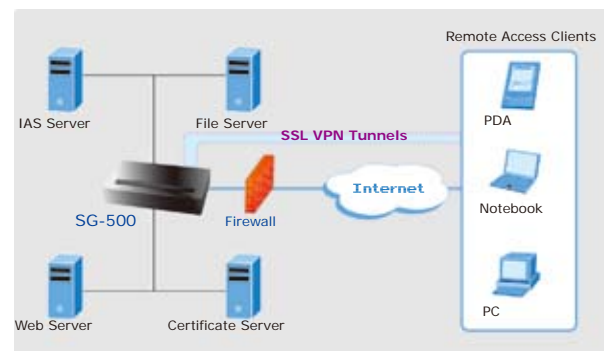
- One 10/100Mbps LAN, DMZ, and WAN ports
- NAT mode and DMZ mode
- DMZ mode requires no changing for the original network structure
- The VPN security gateway supports SSL VPN and IPsec VPN. The SSL VPN function supports up to 5 SSL VPN connection tunnels. The IPsec VPN has DES, 3DES, and AES encryption and SHA-1 / MD5 authentication. The network traffic over public Internet is secured
- Traffic classification is based on IP, IP range/subnet, and TCP/UDP port range
- Guaranteed maximum bandwidth with three levels of priorities
- Policy-based bandwidth management
- Assigns daily and weekly access schedule to each individual policy
- Professional Monitor function includes Log, Accounting Report, Statistics, and Status
- MRTG-like Traffic Statistics, easy to trace and analyze
- Multi-Servers Load Balancing
- Dynamic DNS and DHCP server functions
- Content Filter includes URL, Script, P2P, IM, and Download blocking
- Hacker Alert and Anomaly Flow Detection
- Virtual Server and IP mapping (Multi-DMZ Host)
- Multi-language Web UI and easy to manage
- User authentication based on user name and password

SPECIFICATION

Product	VPN Security Gateway	
Model	SG-500	
Hardware Specification		
Connections	WAN	1 x 10/100Base-TX
	LAN	1 x 10/100Base-TX, Auto-MDI/MDI-X
	DMZ	1 x 10/100Base-TX, Auto-MDI/MDI-X
Button	Reset button for hardware reset / factory default	
System LED	PWR, WAN, LAN, DMZ	
Power	12V DC, 1.5A	
Operating Environment	Temperature: 0~50 degree C, Relative Humidity: 5%~90%	
Dimension W x D x H	230 x 150 x 40 mm	
Regulatory	FCC, CE Mark	
Software		
Maximum Controlled Concurrent Session	20,000	
New Session / Second	1,000	
SSL VPN Tunnels	Up to 5 tunnels	
IPSec VPN Tunnels (Connection / Configure)	100/200	
Management	Web UI (English, Traditional Chinese, Simplified Chinese)	
Operation Mode	DMZ_NAT, DMZ_Transparent, NAT	
WAN Connection Type in NAT Mode	PPPoE, DHCP, and Fixed IP	
Traffic Classification	IP, IP subnet, TCP/UDP port	
Bandwidth Allocation	Policy rules with Inbound/Outbound traffic management Guaranteed and maximum bandwidth Scheduled in unit of 30 minutes 3 Priorities	
Log	Traffic Log, Event Log, Connection Log, Log backup by mail or syslog server	
Statistics	WAN port statistics and policy statistics with graph display	
Firewall Security	Policy-based access control, Stateful Packet Inspection (SPI), Scheduled in unit of 30 minutes	
Hacker Alert and Anomaly Flow Detection	Detect SYN Attack, Detect ICMP Flood, Detect UDP Flood, Detect Ping of Death Attack, Detect Tear Drop Attack, Detect IP Spoofing Attack, Filter IP Route Option, Detect Port Scan Attack, Detect Land Attack, Virus-Infected Blocking, E-Mail Alert Notification, NetBIOS Notification	
Alarm	Traffic alarm for user-defined traffic level Event alarm for hacker attack The alarm message can sent to administrators by e-mail	
Other Functions	Upgradeable Firmware through Web NTP support Backup and Restore Configuration through Web Dynamic DNS support Multiple NAT and multiple DMZ (mapped IP) support Multiple server load balancing	

APPLICATIONS
VPN Security Gateway

The SG-500 provides SSL and IPSec VPN. The SSL VPN function supports up to 5 SSL VPN connection tunnels. Remote access clients could build the VPN tunnels by SSL VPN function easily.


ORDERING INFORMATION

SG-500	VPN Security Gateway
--------	----------------------